



**TI-*nspire***<sup>™</sup>

## Lua Scripting API Reference Guide

This reference guide applies to TI-Nspire<sup>™</sup> software version 4.1. To obtain the latest version of the documentation, go to [education.ti.com/nspire/scripting](http://education.ti.com/nspire/scripting).

## Important Information

Except as otherwise expressly stated in the License that accompanies a program, Texas Instruments makes no warranty, either express or implied, including but not limited to any implied warranties of merchantability and fitness for a particular purpose, regarding any programs or book materials and makes such materials available solely on an "as-is" basis. In no event shall Texas Instruments be liable to anyone for special, collateral, incidental, or consequential damages in connection with or arising out of the purchase or use of these materials, and the sole and exclusive liability of Texas Instruments, regardless of the form of action, shall not exceed the amount set forth in the license for the program. Moreover, Texas Instruments shall not be liable for any claim of any kind whatsoever against the use of these materials by any other party.

© 2011 - 2015 Texas Instruments Incorporated

All rights reserved

## Trademarks and copyrights

The TI-Nspire™ software uses Lua as scripting environment. For copyright and license information, see <http://www.lua.org/license.html>.

The TI-Nspire™ software uses Chipmunk Physics version 5.3.4 as simulation environment. For license information, see

<http://chipmunk-physics.net/release/Chipmunk-5.x/Chipmunk-5.3.4-Docs/>.

Microsoft® and Windows® are registered trademarks of Microsoft Corporation in the United States and/or other countries.

Mac OS®, iPad® and OS X® are registered trademarks of Apple Inc.

Unicode® is a registered trademark of Unicode, Inc. in the United States and other countries.

*Bluetooth*® word mark and logos are registered trademark owned by Bluetooth SIG, Inc.

# Contents

<b>1</b>	<b>Standard Libraries</b>	<b>1</b>
1.1	Basic Library Functions . . . . .	1
1.1.1	Coroutine Sub-Library . . . . .	1
1.2	Module Library . . . . .	2
1.3	String Library . . . . .	2
1.4	Table Library . . . . .	2
1.5	Math Library . . . . .	2
1.6	Unimplemented Libraries and Functions . . . . .	3
<b>2</b>	<b>Touch Library</b>	<b>4</b>
2.1	Overview . . . . .	4
2.1.1	On-Screen Keyboard and Screen Resize Behavior . . . . .	4
2.1.2	Event Handling . . . . .	5
2.2	Library Functions . . . . .	6
2.2.1	ppi . . . . .	6
2.2.2	xppi . . . . .	6
2.2.3	yppi . . . . .	6
2.2.4	enabled . . . . .	6
2.2.5	isKeyboardAvailable . . . . .	6
2.2.6	isKeyboardVisible . . . . .	7
2.2.7	showKeyboard . . . . .	7
<b>3</b>	<b>2D Editor Library</b>	<b>8</b>
3.1	newRichText . . . . .	9
3.2	createChemBox . . . . .	9
3.3	createMathBox . . . . .	9
3.4	getExpression . . . . .	10
3.5	getExpressionSelection . . . . .	10
3.6	getText . . . . .	11
3.7	hasFocus . . . . .	11
3.8	isVisible . . . . .	11
3.9	move . . . . .	11
3.10	registerFilter . . . . .	12
3.11	resize . . . . .	12
3.12	setBorder . . . . .	13
3.13	setBorderColor . . . . .	13
3.14	setColorable . . . . .	13

3.15	setDisable2DinRT	13
3.16	setExpression	14
3.17	setFocus	15
3.18	setFontSize	15
3.19	setMainFont	15
3.20	setReadOnly	16
3.21	setSelectable	16
3.22	setSizeChangeListener	16
3.23	setText	17
3.24	setTextChangeListener	17
3.25	setTextColor	17
3.26	setVisible	17
3.27	setWordWrapWidth	18
<b>4</b>	<b>Class Library</b>	<b>19</b>
4.1	class	19
<b>5</b>	<b>Clipboard Library</b>	<b>20</b>
5.1	addText	20
5.2	getText	20
<b>6</b>	<b>Cursor Library</b>	<b>21</b>
6.1	set	21
6.2	hide	21
6.3	show	22
<b>7</b>	<b>Document Library</b>	<b>23</b>
7.1	markChanged	23
<b>8</b>	<b>Event Handling</b>	<b>24</b>
8.1	activate	25
8.2	arrowDown	25
8.3	arrowKey	26
8.4	arrowLeft	26
8.5	arrowRight	26
8.6	arrowUp	26
8.7	charIn	26
8.8	backspaceKey	27
8.9	backtabKey	27
8.10	clearKey	27
8.11	construction	27
8.12	contextMenu	27
8.13	copy	28
8.14	create	28
8.15	createMathBox	28
8.16	cut	29
8.17	deactivate	29
8.18	deleteKey	29

8.19	destroy	29
8.20	enterKey	30
8.21	escapeKey	30
8.22	getFocus	30
8.23	getSymbolList	31
8.24	grabDown	31
8.25	grabUp	32
8.26	help	32
8.27	keyboardDown	32
8.28	keyboardUp	32
8.29	loseFocus	33
8.30	mouseDown	33
8.31	mouseMove	33
8.32	mouseUp	33
8.33	paint	34
8.34	paste	34
8.35	propertiesChanged	34
8.36	resize	35
8.37	restore	35
8.38	returnKey	35
8.39	rightMouseDown	36
8.40	rightMouseUp	36
8.41	save	36
8.42	tabKey	37
8.43	timer	37
8.44	varChange	37
<b>9</b>	<b>Graphics Library</b>	<b>38</b>
9.1	clipRect	38
9.2	drawArc	39
9.3	drawImage	39
9.4	drawLine	39
9.5	drawPolyLine	39
9.6	drawRect	40
9.7	drawString	40
9.8	fillArc	41
9.9	fillPolygon	41
9.10	fillRect	41
9.11	getStringHeight	41
9.12	getStringWidth	41
9.13	setColorRGB	42
9.14	setFont	42
9.15	setPen	42
<b>10</b>	<b>Image Library</b>	<b>43</b>
10.1	new	43
10.2	copy	43
10.3	height	44

10.4	rotate	44
10.5	width	44
<b>11</b>	<b>Locale Library</b>	<b>45</b>
11.1	name	45
<b>12</b>	<b>Math Library Extension</b>	<b>46</b>
12.1	eval	47
12.2	evalStr	48
12.3	getEvalSettings	49
12.4	setEvalSettings	50
<b>13</b>	<b>Module Library</b>	<b>52</b>
<b>14</b>	<b>Platform Library</b>	<b>53</b>
14.1	apiLevel	53
14.2	hw	54
14.3	isColorDisplay	54
14.4	isDeviceModeRendering	54
14.5	isTabletModeRendering	54
14.6	registerErrorHandler	55
14.7	window	55
14.7.1	height and width	55
14.7.2	invalidate	55
14.7.3	setBackgroundColor	56
14.7.4	setFocus	56
14.7.5	getScrollHeight	56
14.7.6	setScrollHeight	57
14.8	withGC	57
<b>15</b>	<b>String Library Extension</b>	<b>58</b>
15.1	split	58
15.2	uchar	58
15.3	usub	59
<b>16</b>	<b>Timer Library</b>	<b>60</b>
16.1	getMilliSecCounter	60
16.2	start	61
16.3	stop	61
<b>17</b>	<b>Tool Palette Library</b>	<b>62</b>
17.1	register	62
17.2	enable	63
17.3	enableCut	63
17.4	enableCopy	64
17.5	enablePaste	64
<b>18</b>	<b>Variable Library</b>	<b>65</b>
18.1	list	65

18.2	makeNumericList	65
18.3	monitor	66
18.4	recall	66
18.5	recallAt	67
18.6	recallStr	67
18.7	store	67
18.8	storeAt	68
18.9	unmonitor	68
<b>19</b>	<b>Physics Library</b>	<b>69</b>
19.1	Miscellaneous routines	69
19.1.1	INFINITY	69
19.1.2	momentForBox	70
19.1.3	momentForCircle	70
19.1.4	momentForPoly	71
19.1.5	momentForSegment	71
19.2	Vectors	72
19.2.1	Vect	72
19.2.2	add	72
19.2.3	clamp	73
19.2.4	cross	73
19.2.5	dist	73
19.2.6	distsq	74
19.2.7	dot	74
19.2.8	eql	74
19.2.9	length	75
19.2.10	lengthsq	75
19.2.11	lerp	75
19.2.12	lerpconst	76
19.2.13	mult	76
19.2.14	near	76
19.2.15	neg	77
19.2.16	normalize	77
19.2.17	normalizeSafe	77
19.2.18	perp	78
19.2.19	project	78
19.2.20	rotate	78
19.2.21	rperp	79
19.2.22	setx	79
19.2.23	sety	79
19.2.24	slerp	80
19.2.25	slerpconst	80
19.2.26	sub	81
19.2.27	toangle	81
19.2.28	unrotate	81
19.2.29	x	82
19.2.30	y	82
19.3	Bounding Boxes	82

19.3.1	BB	82
19.3.2	b	83
19.3.3	clampVect	83
19.3.4	containsBB	83
19.3.5	containsVect	84
19.3.6	expand	84
19.3.7	intersects	84
19.3.8	l	85
19.3.9	merge	85
19.3.10	setb	85
19.3.11	r	86
19.3.12	setl	86
19.3.13	setr	86
19.3.14	sett	87
19.3.15	t	87
19.3.16	wrapVect	87
19.4	Bodies	87
19.4.1	Body	88
19.4.2	activate	88
19.4.3	angle	88
19.4.4	angVel	89
19.4.5	applyForce	89
19.4.6	applyImpulse	89
19.4.7	data	90
19.4.8	force	90
19.4.9	isRogue	90
19.4.10	isSleeping	91
19.4.11	local2World	91
19.4.12	kineticEnergy	91
19.4.13	mass	92
19.4.14	moment	92
19.4.15	pos	92
19.4.16	resetForces	93
19.4.17	rot	93
19.4.18	setAngle	93
19.4.19	setAngVel	94
19.4.20	setData	94
19.4.21	setForce	94
19.4.22	setMass	95
19.4.23	setMoment	95
19.4.24	setPos	95
19.4.25	setPositionFunc	96
19.4.26	setTorque	96
19.4.27	setVel	96
19.4.28	setVelocityFunc	97
19.4.29	setVLimit	97
19.4.30	setWLimit	98
19.4.31	sleep	98



19.4.32	sleepWithGroup	99
19.4.33	torque	99
19.4.34	updatePosition	100
19.4.35	updateVelocity	100
19.4.36	vel	100
19.4.37	vLimit	101
19.4.38	wLimit	101
19.4.39	world2Local	101
19.5	Shapes	101
19.5.1	BB	102
19.5.2	body	102
19.5.3	collisionType	102
19.5.4	data	103
19.5.5	friction	103
19.5.6	group	103
19.5.7	layers	104
19.5.8	rawBB	104
19.5.9	restitution	104
19.5.10	sensor	105
19.5.11	setCollisionType	105
19.5.12	setData	105
19.5.13	setFriction	106
19.5.14	setGroup	106
19.5.15	setLayers	107
19.5.16	setRestitution	107
19.5.17	setSensor	107
19.5.18	setSurfaceV	108
19.5.19	surfaceV	108
19.6	Circle Shapes	108
19.6.1	CircleShape	108
19.6.2	offset	109
19.6.3	radius	109
19.7	Polygon Shapes	109
19.7.1	PolyShape	109
19.7.2	numVerts	110
19.7.3	points	110
19.7.4	vert	111
19.8	Segment Shapes	112
19.8.1	SegmentShape	112
19.8.2	a	112
19.8.3	b	113
19.8.4	normal	113
19.8.5	radius	113
19.9	Spaces	113
19.9.1	Space	114
19.9.2	addBody	114
19.9.3	addConstraint	114
19.9.4	addCollisionHandler	115

19.9.5	addPostStepCallback	116
19.9.6	addShape	116
19.9.7	addStaticShape	117
19.9.8	damping	117
19.9.9	data	117
19.9.10	elasticIterations	117
19.9.11	gravity	118
19.9.12	idleSpeedThreshold	118
19.9.13	iterations	118
19.9.14	rehashShape	119
19.9.15	rehashStatic	119
19.9.16	removeBody	119
19.9.17	removeConstraint	120
19.9.18	removeShape	120
19.9.19	removeStaticShape	120
19.9.20	resizeActiveHash	121
19.9.21	resizeStaticHash	121
19.9.22	setDamping	122
19.9.23	setData	122
19.9.24	setElasticIterations	122
19.9.25	setGravity	123
19.9.26	setIdleSpeedThreshold	123
19.9.27	setIterations	123
19.9.28	setSleepTimeThreshold	124
19.9.29	sleepTimeThreshold	124
19.9.30	step	125
19.10	Constraints	125
19.10.1	Damped Rotary Spring	126
19.10.2	Damped Spring	127
19.10.3	Gear Joint	128
19.10.4	Groove Joint	128
19.10.5	Pin Joint	128
19.10.6	Pivot Joint	129
19.10.7	Ratchet Joint	130
19.10.8	Rotary Limit Joint	130
19.10.9	Simple Motor	131
19.10.10	Slide Joints	131
19.11	Arbiters and Collision Pairs	131
19.11.1	#	132
19.11.2	a	132
19.11.3	b	132
19.11.4	bodies	132
19.11.5	depth	133
19.11.6	elasticity	133
19.11.7	friction	133
19.11.8	impulse	134
19.11.9	isFirstContact	134
19.11.10	normal	134

19.11.11	point	135
19.11.12	setElasticity	135
19.11.13	setFriction	135
19.11.14	shapes	136
19.11.15	totalImpulse	136
19.11.16	totalImpulseWithFriction	137
19.12	Shape Queries	137
19.12.1	pointQuery	137
19.12.2	segmentQuery	137
19.13	Space Queries	138
19.13.1	pointQuery	138
19.13.2	pointQueryFirst	138
19.13.3	segmentQuery	139
19.13.4	segmentQueryFirst	139
19.14	SegmentQueryInfo	140
19.14.1	hitDist	140
19.14.2	hitPoint	140
<b>20</b>	<b>Bluetooth<sup>®</sup> Smart Library</b>	<b>141</b>
20.1	Bluetooth <sup>®</sup> LE	141
20.1.1	addStateListener	141
20.1.2	removeStateListener	142
20.1.3	pack	143
20.1.4	unpack	143
20.1.5	Format Specifier for pack and unpack	144
20.2	Bluetooth <sup>®</sup> LE Central	145
20.2.1	startScanning	145
20.2.2	stopScanning	147
20.2.3	isScanning	147
20.3	Peripheral Class	148
20.3.1	getName	148
20.3.2	getState	149
20.3.3	connect	149
20.3.4	disconnect	150
20.3.5	discoverServices	151
20.3.6	getServices	152
20.4	Service Class	152
20.4.1	getUUID	152
20.4.2	discoverCharacteristics	152
20.4.3	getCharacteristics	154
20.5	Characteristic Class	155
20.5.1	getUUID	155
20.5.2	setValueUpdateListener	155
20.5.3	setWriteCompleteListener	156
20.5.4	read	157
20.5.5	setNotify	157
20.5.6	getValue	157
20.5.7	write	158

<b>A</b>	<b>Script Compatibility</b>	<b>159</b>
A.1	Backward and Forward Compatibility . . . . .	159
A.1.1	Document Compatibility . . . . .	159
A.1.2	Scripting Compatibility . . . . .	160
A.2	Creating Scripts for a Future Software Release . . . . .	160
A.3	Platform Compatibility . . . . .	161
<b>B</b>	<b>Deprecated API Functions and API Behavior</b>	<b>163</b>
B.1	Image Library . . . . .	163
B.2	Platform Library . . . . .	164
B.2.1	gc . . . . .	164
B.3	Platform Library . . . . .	164
B.3.1	drawString Vertical Alignment . . . . .	164
B.4	Requested API Level . . . . .	164

# List of Tables

2.1	Gesture to event handler mapping . . . . .	5
3.1	2D editor markup language . . . . .	8
20.1	Format specifier for <b>pack</b> and <b>unpack</b> . . . . .	145
A.1	Mapping between API level and TI-Nspire™ software version . . . . .	161
A.2	Overview about platform incompatibilities . . . . .	162

# List of Figures

8.1 Open Document Sequence Chart . . . . . 25

20.1 *Bluetooth*<sup>®</sup> LE Scanning Procedure . . . . . 148

# Listings

3.1	Default Values of a new 2D Rich Text Editor . . . . .	9
3.2	Example 1 for <code>getExpressionSelection()</code> . . . . .	10
3.3	Example 2 for <code>getExpressionSelection()</code> . . . . .	10
3.4	Example for <code>D2Editor:registerFilter()</code> . . . . .	12
3.5	Example 1 for <code>D2Editor:setExpression</code> . . . . .	14
3.6	Example 2 for <code>D2Editor:setExpression</code> . . . . .	14
4.1	Class Library Example . . . . .	19
8.1	Event Handler Example . . . . .	24
8.2	Example for <code>getSymbolList</code> . . . . .	31
12.1	Converting a Lua Number to a String to be Used in <code>math.eval()</code> (E Notation) . . . . .	47
12.2	<code>math.evalStr()</code> Returning Result in E Notation . . . . .	48
12.3	<code>math.evalStr()</code> Returning Negative Numbers . . . . .	48
12.4	TI-Nspire™ Software Default Settings Returned by <code>getEvalSettings</code> . . . . .	49
12.5	Calling <code>math.setEvalSettings()</code> using a table with names . . . . .	50
12.6	Calling <code>math.setEvalSettings()</code> using a table with ordinal number . . . . .	50
12.7	Calling <code>math.setEvalSettings()</code> using a table with combined names and numbers . . . . .	50
14.1	Example of Using <code>withGC()</code> to get the Pixel Length and Height of a String . . . . .	57
15.1	Examples for <code>string.usub()</code> . . . . .	59
17.1	Registering a Tool Palette . . . . .	63
18.1	Example for Accessing a Matrix via the Variable Library . . . . .	66
19.1	Spherical Linear Interpolation Example . . . . .	80
19.2	Example for <code>physics.Body:setVelocityFunc()</code> . . . . .	97
19.3	The Form of the Callback Table for <code>physics.Space:addCollisionHandler()</code> . . . . .	115
20.1	Example Showing the use of <code>ble.pack()</code> . . . . .	143
20.2	Concatenation of Multiple calls to <code>ble.pack()</code> . . . . .	143
20.3	Example Showing the use of <code>ble.unpack()</code> . . . . .	144
20.4	Splitting Unpacking into Multiple calls to <code>ble.unpack()</code> . . . . .	144
20.5	Example for <code>peripheral.getState()</code> . . . . .	149
A.1	Authoring for a Future Software Release for the Example of Touch . . . . .	161
B.1	Use of the static GC in <code>platform.apiLevel = '1.0'</code> . . . . .	164

# Chapter 1

## Standard Libraries

The TI-Nspire™ software integrates most Lua standard libraries that come with the Lua distribution. This chapter provides an overview about the supported Lua library functions as well as restrictions to these functions.

See the ([Lua 5.1 Reference Manual](#)) for definitions and details of the standard functions.

### 1.1 Basic Library Functions

For further details, please follow [this link](#) to the “Basic Functions” section in the [Lua 5.1 Reference Manual](#).

<code>assert</code>	<code>collectgarbage</code>	<code>error</code>	<code>_G</code>	<code>getfenv</code>	<code>getmetatable</code>
<code>ipairs</code>	<code>load</code> <sup>1</sup>	<code>loadstring</code> <sup>1</sup>	<code>next</code>	<code>pairs</code>	<code>pcall</code>
<code>print</code> <sup>2</sup>	<code>rawequal</code>	<code>rawget</code>	<code>rawset</code>	<code>select</code>	<code>setfenv</code>
<code>setmetatable</code>	<code>tonumber</code>	<code>tostring</code>	<code>type</code>	<code>unpack</code>	<code>_VERSION</code>
<code>xpcall</code>					

#### 1.1.1 Coroutine Sub-Library

For further details, please follow [this link](#) to the “Coroutine Manipulation” section in the [Lua 5.1 Reference Manual](#). The following functions are defined inside the `coroutine` table. Heavy use of coroutines might be difficult to debug inside the TI-Nspire™ Editor.

`create` `resume` `running` `status` `wrap` `yield`

---

<sup>1</sup>Please be cautious with the use of `load` and `loadstring`. Lua source code loaded by the use of these functions is not supported in the TI-Nspire™ Editor. This source code cannot be debugged and error messages resulting from functions loaded using `load` and `loadstring` might cause confusing results.

The use of byte code as chunk for `load` and `loadstring` is prohibited inside the TI-Nspire™ software.

<sup>2</sup>The output from the `print` function is directed into the console of the TI-Nspire™ Editor only. On any platform where the TI-Nspire™ Editor is not included calls to the `print` function are ignored.



## 1.2 Module Library

The implementation of this module is very limited. Please consult the [chapter 13](#) on page 52 for more details.

## 1.3 String Library

For further details, please follow [this link](#) to the “String Manipulation” section in the Lua 5.1 Reference Manual.

String routines `lower` and `upper` are not tailored to the current locale. The conversion of strings to **upper** and **lower** case letters operates only on the 26 letters of the Latin alphabet. This restriction also applies to the alphabetic matching patterns (`%a`, `%l`, `%u`, and `%w`) employed by the `find`, `gmatch`, and `match` functions.

<code>byte</code>	<code>char</code>	<code>dump</code>	<code>find</code>	<code>format</code>	<code>gmatch</code>	<code>gsub</code>	<code>len</code>
<code>lower</code>	<code>match</code>	<code>rep</code>	<code>reverse</code>	<code>sub</code>	<code>upper</code>		

## 1.4 Table Library

For further details, please follow [this link](#) to the “Table Manipulation” section in the Lua 5.1 Reference Manual.

<code>concat</code>	<code>insert</code>	<code>maxn</code>	<code>remove</code>	<code>sort</code>
---------------------	---------------------	-------------------	---------------------	-------------------

## 1.5 Math Library

For further details, please follow [this link](#) to the “Mathematical Functions” section in the Lua 5.1 Reference Manual. The following functions are defined inside the `math` table. Infinite and undefined results will convert to the appropriate TI-Nspire™ representations and cooperate with the TI-Nspire™ math extensions. The reverse conversion of string representation (infinite and undefined) to numerical representation is not supported.

<code>abs</code>	<code>acos</code>	<code>asin</code>	<code>atan</code>	<code>atan2</code>	<code>ceil</code>	<code>cos</code>	<code>cosh</code>
<code>deg</code>	<code>exp</code>	<code>floor</code>	<code>fmod</code>	<code>frexp</code>	<code>huge</code>	<code>ldexp</code>	<code>log</code>
<code>log10</code>	<code>max</code>	<code>min</code>	<code>modf</code>	<code>pi</code>	<code>pow</code>	<code>rad</code>	<code>random</code>
<code>randomseed</code>	<code>sin</code>	<code>sinh</code>	<code>sqrt</code>	<code>tan</code>	<code>tanh</code>		

## 1.6 Unimplemented Libraries and Functions

The following standard Lua libraries are not available in the TI-Nspire™ software:

**file io os debug**

The following standard functions and standard table entries are not available in the TI-Nspire™ software:

**dofile loadfile module package.cpath package.loadlib  
package.path package.seeall**

## Chapter 2

# Touch Library

The touch library is added to the TI-Nspire™ platform with `platform.apiLevel = '2.2'`. It is visible on all platforms but may ignore calls to its functions if the platform running the script does not support touch.

The touch library offers a low-level interface, which enables script authors to develop scripts that run on all platforms equally. It also places the effort on the script writer to design and test the script for all different platforms if platform compatibility is desired.

## 2.1 Overview

The following will give an overview about system features and behavior that script authors need to be aware of to write successful scripts for touch platforms and scripts working well across all TI-Nspire™ platforms.

### 2.1.1 On-Screen Keyboard and Screen Resize Behavior

The TI-Nspire™ software features two keyboards — ABC and Function keyboard. The user can switch between both keyboards. The default keyboard for the scripting environment is the ABC keyboard.

There are different keyboard modes that might be supported on each touch platform — docked, undocked, and split keyboard. In any mode, no resize event will be sent to the script. If the keyboard is docked, the TI-Nspire™ platform will allow the user to pan the screen allowing access to content behind the keyboard - see [setScrollHeight\(\)](#) for controlling scrolling by the script while a docked keyboard is onscreen. The new [on.keyboardUp\(\)](#) event handler supports the script with the overlapping height of the on-screen keyboard.

Touch platforms usually support undocked and split on-screen keyboards to be panned; therefore, panning of the script is not needed.

## 2.1.2 Event Handling

All event handling is described in [chapter 8](#) on page 24. There is no change for touch platforms in `platform.apiLevel = '2.2'` except for two new handlers, on-screen keyboard up and down detection — see `on.keyboardUp(keyboardOverlapHeight)` and `on.keyboardDown()` event handler. Please see [Table 2.1](#) for the mapping between touch gestures and the existing event handlers.

Table 2.1: Gesture to event handler mapping

Gesture	“on” handler	Comment
Single Tap	<code>on.mouseDown()</code> <code>on.mouseUp()</code>	It should be noted that the gesture recognizer adds a small delay between lifting the finger from the screen and sending the <code>mouseUp</code> event.
Double Tap	<code>on.mouseDown()</code> <code>on.mouseUp()</code> <code>on.mouseDown()</code> <code>on.mouseUp()</code>	Likewise due to the gesture recognizer the first <code>mouseUp</code> is received after the second tap is complete. The following down and up are send immediately.
Pan	<code>on.mouseDown()</code> <code>on.mouseMove()</code> 's ... <code>on.mouseUp()</code>	Same behavior as on a desktop platform when pressing the mouse button, dragging the mouse and releasing the mouse button again. When running on a non-touch platform, <code>on.mouseMove()</code> can be received while the mouse button is not pressed.
Long Press Move	<code>on.mouseDown()</code> <code>on.mouseMove()</code> 's <code>on.mouseUp()</code>	Same behavior as pan. There is no differentiation possible from the script.
Other Gestures	<code>on.mouseDown()</code> [ <code>on.mouseMove()</code> 's] <code>on.mouseUp()</code>	Will reliably generate a <code>on.mouseDown()</code> and <code>on.mouseUp()</code> event. One or multiple <code>on.mouseMove()</code> might be sent. Multi-finger gestures will report coordinates below or between the fingers.

**Note:** The behavior of the mapping described in [table 2.1](#) is slightly different for mouse handler registered with `D2Editor:registerFilter()`. In the case of single and double tap, the first `on.mouseDown()` event will be received after the gesture is fully recognized and the finger is lifted up from the screen. Likewise for pan and long press gestures. The `on.mouseDown()` event is sent when either the finger starts moving or stays without moving for a particular time.

Another important aspect related to event handling is the return value of an event handler. The main use case in `platform.apiLevel = '2.0'` for event handler return values has been filter event handler registered for a 2D Editor - see `D2Editor:registerFilter()`. Every event handler may return a boolean to indicate if the event has been handled (`true`) or ignored (`false`). If an event handler does not return explicitly a value, the value will default to `true`. In the context of touch and on-screen keyboard, the return value of `mouseDown` while the keyboard is up plays an important role and can disturb the user experience when used incorrectly. While the keyboard is up, the user can pan the screen to see content behind the keyboard. If `mouseDown` returns `true`, or has no explicit return statement, the user will be prevented from panning the screen.

## 2.2 Library Functions

### 2.2.1 ppi

```
touch.ppi()
```

Returns pixels per inches along the diagonal of the screen. This function is useful to determine the touch target size of touchable objects on the screen.

**Introduced in platform.apiLevel = '2.2'**

### 2.2.2 xppi

```
touch.xppi()
```

Returns pixels per inches along the x-axis of the screen. This function is useful to determine the touch target size of touchable objects on the screen.

**Introduced in platform.apiLevel = '2.2'**

### 2.2.3 yppi

```
touch.yppi()
```

Returns pixels per inches along the y-axis of the screen. This function is useful to determine the touch target size of touchable objects on the screen.

**Introduced in platform.apiLevel = '2.2'**

### 2.2.4 enabled

```
touch.enabled()
```

Returns **true** if the platform supports touch, otherwise **false**. If touch is supported, it is recommended to use the ppi values to calculate touch target sizes.

**Introduced in platform.apiLevel = '2.2'**

### 2.2.5 isKeyboardAvailable

```
touch.isKeyboardAvailable()
```

Returns **true** if an on-screen keyboard is available on the platform, otherwise **false**.

**Introduced in platform.apiLevel = '2.2'**

## 2.2.6 isKeyboardVisible

```
touch.isKeyboardVisible()
```

Returns true if any keyboard is visible (docked, undocked, and split keyboards).

**Introduced in platform.apiLevel = '2.2'**

## 2.2.7 showKeyboard

```
touch.showKeyboard(boolean)
```

Causes the docked ABC keyboard to appear on the screen if no keyboard is currently visible. Default is **true**.

**Introduced in platform.apiLevel = '2.2'**

## Chapter 3

# 2D Editor Library

The Lua 2D editor bindings enable 2D rich text editors to be created and manipulated within the TI-Nspire™ product. 2D rich text editors are created using `newRichText()`.

Script authors should be aware that rich text editors may embed annotations in proprietary markup language. Such markup could be embedded from the script by calling `createMathBox()` or `createChemBox()`.

Users of the script application may also be able to copy and paste text with other markup information from other TI-Nspire™ applications like Notes. Some information about the markup language used inside the 2D editor is shown in [Table 3.1](#).

Table 3.1: 2D editor markup language

Description	Markup	Comment
Math Box	<code>"\0el {...}"</code>	Contains a 2D formula.
Evaluated Math Box expressions	<code>"\0el {...} &gt;' \0el {...}"</code>	A pair of Math Boxes — formula and evaluated result
Chem Box	<code>"\0chem {...}"</code>	Describes a chemical formula
Other	<code>"\1 ...\"</code>	It is not recommended to utilize this type in scripts as the used markup may change in future releases. But it is recommended that scripts will gracefully handle this type of markup without Lua error.

## 3.1 newRichText

```
D2Editor.newRichText()
```

Creates and returns a new 2D rich text editor. Default values are illustrated in [Listing 3.4](#).

### Note

The program must [resize](#) the 2D editor before the text editor widget is painted the first time.

Listing 3.1: Default Values of a new 2D Rich Text Editor

```
editor:move(0, 0)
    :setBorder(0)
    :setBorderColor(0x000000)
    :setColorable(false)
    :setDisable2DinRT(false)
    :setFontSize(<default system size>)
    :setMainFont(<default system font>)
    :setReadOnly(false)
    :setSelectable(true)
    :setTextColor(0x000000)
    :setVisible(true)
```

Introduced in `platform.apiLevel = '1.0'`

## 3.2 createChemBox

```
D2Editor.createChemBox()
```

Inserts a Chem Box in the current cursor position of the editor.

Returns the text editor object.

Introduced in `platform.apiLevel = '2.0'`

## 3.3 createMathBox

```
D2Editor.createMathBox()
```

Inserts a Math Box (Expression Box) in the current cursor position of the editor.

Returns the text editor object.

Introduced in `platform.apiLevel = '2.0'`



## 3.4 getExpression

```
D2Editor:getExpression()
```

Returns the contents of the text editor as a UTF-8 encoded string.

Introduced in `platform.apiLevel = '2.0'`

## 3.5 getExpressionSelection

```
D2Editor:getExpressionSelection()
```

Returns three values: the contents of the text editor as a UTF-8 encoded string, the cursor position as an integer, and the selection start as an integer.

### Usage

Cursor and selection positions are the borders between characters, not the position of the characters. The following code snippets serve as examples.

Listing 3.2: Example 1 for `getExpressionSelection()`

```
str = 'This is a test string to see it working.'
d2e, error = D2Editor.newRichText():resize(100, 100)
result, error = d2e.setText(str, 16, 28)
str, pos, sel, error = d2e:getExpressionSelection()

-- The getExpressionSelection() are results are:
str = 'This is a test string to see it working.'
pos = 16 -- (right before the 's' in "string")
sel = 28 -- (between the two e's in "see")
```

Listing 3.3: Example 2 for `getExpressionSelection()`

```
str = 'This is a test string to see it working.'
d2e, error = D2Editor.newRichText():resize(100, 100)
result, error = d2e.setText(str, 28, 16)
str, pos, sel, error = d2e:getExpressionSelection()

-- The getExpressionSelection() are results are:
str = 'This is a test string to see it working.'
pos = 28 -- (between the two e's in "see")
sel = 16 -- (right before the 's' in "string")
```

Introduced in `platform.apiLevel = '2.0'`

### 3.6 getText

```
D2Editor:getText()
```

Returns the contents of the text editor as a UTF-8 encoded string.

**Introduced in platform.apiLevel = '1.0'**

### 3.7 hasFocus

```
D2Editor:hasFocus()
```

Returns true if the editor has focus; otherwise returns false.

**Introduced in platform.apiLevel = '2.0'**

### 3.8 isVisible

```
D2Editor:isVisible()
```

Returns true if the editor is visible; otherwise returns false.

**Introduced in platform.apiLevel = '2.0'**

### 3.9 move

```
D2Editor:move(x, y)
```

Sets the parent-relative location of the upper-left corner of the text editor. Both **x** and **y** must be between -32767 and 32767.

Returns the text editor object.

**Introduced in platform.apiLevel = '1.0'**

## 3.10 registerFilter

```
D2Editor:registerFilter(handlerTable)
```

This routine registers a table of handler functions that can filter events before they are sent to the 2D editor widget, or unregisters if nil is passed.

Returns the text editor object.

The **handlerTable** is a table of event handler functions. Any event described in the section on Event Handling can be filtered by a function in the handler table.

In the example code below, if the user presses Tab in the text editor **ed**, the **tabKey** filter function moves the focus to text editor **ed2**. Events **charIn** and **arrowKey** simply report which key was pressed and then allow the event to pass on through to the text editor.

Listing 3.4: Example for D2Editor:registerFilter()

```
-- Create an editor
ed = D2Editor.newRichText()

-- Register filters for events
ed:registerFilter {
    tabKey = function()
                ed2:setFocus()
                return true
            end,
    charIn = function(ch)
                print(ch)
                return false
            end,
    arrowKey = function(key)
                print(key)
                return false
            end
}

```

Introduced in `platform.apiLevel = '2.0'`

## 3.11 resize

```
D2Editor:resize(width, height)
```

Changes the width and height of the text editor. Both **width** and **height** must be  $> 0$  and  $< 32768$ .

Returns the text editor object.

Introduced in `platform.apiLevel = '1.0'`

### 3.12 `setBorder`

```
D2Editor.setBorder(thickness)
```

Sets the editor's border thickness. The thickness value must be between 0 and 10.

Returns the text editor object.

**Introduced in `platform.apiLevel = '2.0'`**

### 3.13 `setBorderColor`

```
D2Editor.setBorderColor(color)
```

Sets the editor's border color. The color value must be between 0 and 16777215 (0x000000 and 0xFFFFFFFF).

Returns the text editor object.

**Introduced in `platform.apiLevel = '2.0'`**

### 3.14 `setColorable`

```
D2Editor.setColorable(boolean)
```

Makes the expression colorable or uncolorable.

Returns the text editor object.

**Introduced in `platform.apiLevel = '2.0'`**

### 3.15 `setDisable2DinRT`

```
D2Editor.setDisable2DinRT(boolean)
```

Turns off 2D layout of math input to the text box.

Returns the text editor object.

**Introduced in `platform.apiLevel = '2.0'`**

## 3.16 setExpression

```
D2Editor:setExpression(text[, cursor[, selection]])
```

Sets the text content of the text editor. The cursor position is set to 1 (beginning of text), -1 (end of text), or a value from 1 to the text length plus 1. Text can be selected by specifying a selection index that indicates the end of the selection. If the **selection** = -1, no text is selected. If the cursor < -1 or **selection** < -1, an error is returned. If unspecified, both the cursor and the selection start default to -1. Returns the text editor object.

### Note


All backslashes sent to the editor must be doubled. This is in addition to the standard escape rule for special characters. As a result, the string required to get the editor to show **home\stuff\work** is “home\\stuff\\work”.

### Usage

Cursor and selection positions are the borders between characters, not the character positions. The following code snippet highlights the characters “string to se” and places the cursor before the 's' in “string”.

Listing 3.5: Example 1 for D2Editor:setExpression

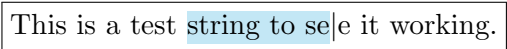
```
str = 'This is a test string to see it working.'  
d2e, error = D2Editor.newRichText():resize(100, 100)  
result, error = d2e:setExpression(str, 16, 28)
```

2DEditor output: 

The following code snippet highlights the characters “string to se” and places the cursor before the second 'e' in “see”.

Listing 3.6: Example 2 for D2Editor:setExpression

```
str = 'This is a test string to see it working.'  
d2e, error = D2Editor.newRichText():resize(100, 100)  
result, error = d2e:setExpression(str, 28, 16)
```

2DEditor output: 

Introduced in `platform.apiLevel = '2.0'`

### 3.17 setFocus

```
D2Editor:setFocus(boolean)
```

Sets the user input focus on the editor if true (the default). This is usually called from the `on.getFocus` event handler.

Returns the text editor object.

**Introduced in `platform.apiLevel = '2.0'`**

### 3.18 setFontSize

```
D2Editor:setFontSize(size)
```

Sets the text font size in the editor. The point size is restricted on the TI-Nspire™ family of handhelds. Choose one of these sizes: 7, 9, 10, 11, 12, 16, or 24. Any font size supported by Windows® or Mac OS® can be used in the desktop software.

Returns the text editor object.

**Introduced in `platform.apiLevel = '2.0'`**

### 3.19 setMainFont

```
D2Editor:setMainFont(family, style)
D2Editor:setMainFont(family, style [, fontSize]) -- API Level 2.3
```

Sets the main font family (“serif” or “sansserif”) and style (“r”, “b”, “i”, “bi”). The new font size parameter introduced in `platform.apiLevel = '2.3'` is optional.

---

Style	Description
r	Regular
b	Bold
i	Italic
bi	Bold and Italic

---

Returns the text editor object.

**Introduced in `platform.apiLevel = '2.0'`**

**Extended in `platform.apiLevel = '2.3'`**

## 3.20 setReadOnly

```
D2Editor:setReadOnly(boolean)
```

Makes the text editor content modifiable (false) or unmodifiable (true) by the user. If a Boolean value is not specified, defaults to true.

Returns the text editor object.

**Introduced in platform.apiLevel = '1.0'**

## 3.21 setSelectable

```
D2Editor:setSelectable(boolean)
```

Makes the text editor content selectable (true) or unselectable (false) by the user. If a Boolean value is not specified, defaults to true.

Returns the text editor object.

**Introduced in platform.apiLevel = '1.0'**

## 3.22 setSizeChangeListener

```
D2Editor:setSizeChangeListener(function(editor, w, h))
```

Sets the callback function for when the editor contents exceed the current editor size, when the contents fit on fewer lines, or when the contents fit on a single line of smaller width. This function can then resize the editor appropriately. The callback function should be a void function. It will be passed into the following parameters:

Parameter	Description
editor	Editor in which the expression changed size.
w	Optimal widget width to fit the expression.
h	Optimal widget height to fit the expression.

Returns the text editor object.

### Info

To remove the listener, call `D2Editor:setSizeChangeListener(nil)`

**Introduced in platform.apiLevel = '2.0'**

### 3.23 setText

```
D2Editor:setText(text[, cursor[, selection]])
```

See [setExpression\(\)](#) for details.

Returns the text editor object.

**Introduced in platform.apiLevel = '1.0'**

### 3.24 setTextChangeListener

```
D2Editor:setTextChangeListener(function(editor))
```

Sets the callback function for when the text expression changes. This function will be passed into the editor object. This allows for processing text input as it occurs.

Returns the text editor object.

#### Info

To remove the listener, call `D2Editor:setTextChangeListener(nil)`

**Introduced in platform.apiLevel = '2.0'**

### 3.25 setTextColor

```
D2Editor:setTextColor(color)
```

Sets the editor text color. The color value must be between 0 and 16777215 (0x000000 and 0xFFFFFFFF).

Returns the text editor object.

**Introduced in platform.apiLevel = '2.0'**

### 3.26 setVisible

```
D2Editor:setVisible(boolean)
```

Sets the visibility of the text editor.

Returns the text editor object.

**Introduced in platform.apiLevel = '2.0'**



## 3.27 setWordWrapWidth

```
D2Editor:setWordWrapWidth(width)
```

Sets the rich text editor word-wrapping width in pixels. Ignored if the editor is in 2D mode. To indicate widget width, sets to 0. To disable wrapping, sets to < 0. The width must be -32767 to 32767.

### Note

When word wrapping is disabled, that is the width is < 0, and ellipses are added to cut words, the negative value of the width specifies the margin from the right of the widget before ellipses are used.

Returns the text editor object.

**Introduced in platform.apiLevel = '2.0'**

## Chapter 4

# Class Library

The class library implements basic object-oriented class definitions.

### 4.1 class

```
class([parent_class])
```

Returns a new class. If a parent class is specified, the new class inherits the methods of the parent class.

Listing 4.1: Class Library Example

```
Widget = class()  
function Widget:init() ... end  
  
Button = class(Widget)  
function Button:init() ... end
```

With these definitions, when the script calls `Button()`, a new `Button` is created. The `Button:init()` function is called to initialize the button, and the newly minted `Button` object is returned as the function result of the call.

Class `Button` in this example inherits all the methods and class variables defined in class `Widget`. Class `Button` can override any methods of its parent class.

**Introduced in `platform.apiLevel = '1.0'`**

## Chapter 5

# Clipboard Library

### 5.1 addText

```
clipboard.addText(string)
```

This routine adds the contents of **string** to the Clipboard as plain text, MIME type “text/plain”.

**Introduced in platform.apiLevel = ‘1.0’**

### 5.2 getText

```
clipboard.getText()
```

This routine returns the contents of the Clipboard as a string of plain text. If the Clipboard does not contain any text (MIME type “text/plain”), this routine returns nil.

**Introduced in platform.apiLevel = ‘1.0’**

## Chapter 6

# Cursor Library

This cursor library controls the appearance of the mouse pointer. The visibility of the cursor can only be controlled on a handheld. Touch platforms do not support the concept of a mouse cursor, therefore any call to this library will be ignored on touch platforms.

A good practice is to request the expected cursor appearance within **on.activate()**. Calls on the cursor library are ignored while deactivated (after **on.deactivate()** is received).

### 6.1 set

```
cursor.set(cursorname)
```

Parameter **cursorname** is a string that contains the name of the cursor shape to use for the mouse pointer. It can be one of the following strings:

“default”	“interrogation”	“crosshair”	“text”	“pointer”
“link select”	“diag resize”	“wait busy”	“hollow pointer”	“rotation”
“pencil”	“zoom box”	“hide”	“arrow”	“zoom out”
“dotted arrow”	“clear”	“animate”	“excel plus”	“mod label”
“writing”	“unavailable”	“resize row”	“resize column”	“drag grab”
“hand open”	“hand closed”	“hand pointer”	“zoom in”	“dilation”
“translation”	“show”			

Introduced in **platform.apiLevel = ‘1.0’**

### 6.2 hide

```
cursor.hide()
```

This routine hides the mouse pointer on a handheld.

**Note:** Calls to this routine are ignored if not executed on a handheld.

Introduced in **platform.apiLevel = ‘1.0’**

## 6.3 show

```
cursor.show()
```

This routine makes the mouse pointer visible on a handheld.

**Note:** Calls to this routine are ignored if not executed on a handheld.

**Introduced in platform.apiLevel = '1.0'**

## Chapter 7

# Document Library

### 7.1 markChanged

```
document.markChanged()
```

This routine marks the current document as changed. The user is prompted to save the TI-Nspire™ document before closing.

**Introduced in platform.apiLevel = '1.0'**

# Chapter 8

## Event Handling

Script applications respond to external stimuli by implementing event handlers. All the event handlers are grouped in the “on” module.

### Example

For example, the application script implements `on.paint(gc)` to be notified when it is time to redraw its window. `on.paint` is passed a graphics context that it can use to call drawing routines on its window.

Listing 8.1: Event Handler Example

```
function on.paint(gc)
  gc.drawLine(...)
  :
end
```

### Simplified Open Document Scenario

There are many scenarios that can be discussed in detail. All specifics about the behavior of particular events are discussed as part of the event description.

However the open document scenario will be discussed here to visualize options and the order of the events received. In reality there might be many more events involved due to painting the script in different contexts (page sorter).

Based on the API level of the script, either the routine **on.construction** or **on.create** is called. The idea of **on.construction** is first to separate the definition of variables classes (done in main) from constructing the app; secondly to separate the layout from construction (**on.resize()**). The main issue of **on.create()** is the missing ability to invalidate ([subsection 14.7.2](#) on page 55) and the mix of creation and layout. The latter might be impacted in some cases due to the missing capability of requesting to invalidate the screen. Another option is the call to **on.restore()**, which is only done when the script is saved and provided a state table (see [section 8.41](#) on page 36). The following figure shows this visually.

In addition, it is also important to understand that a script may not have a size before the **on.resize()** event is received. Calling width or height of the platform window ([subsection 14.7.1](#) on page 55) before **on.resize()** may return 0.

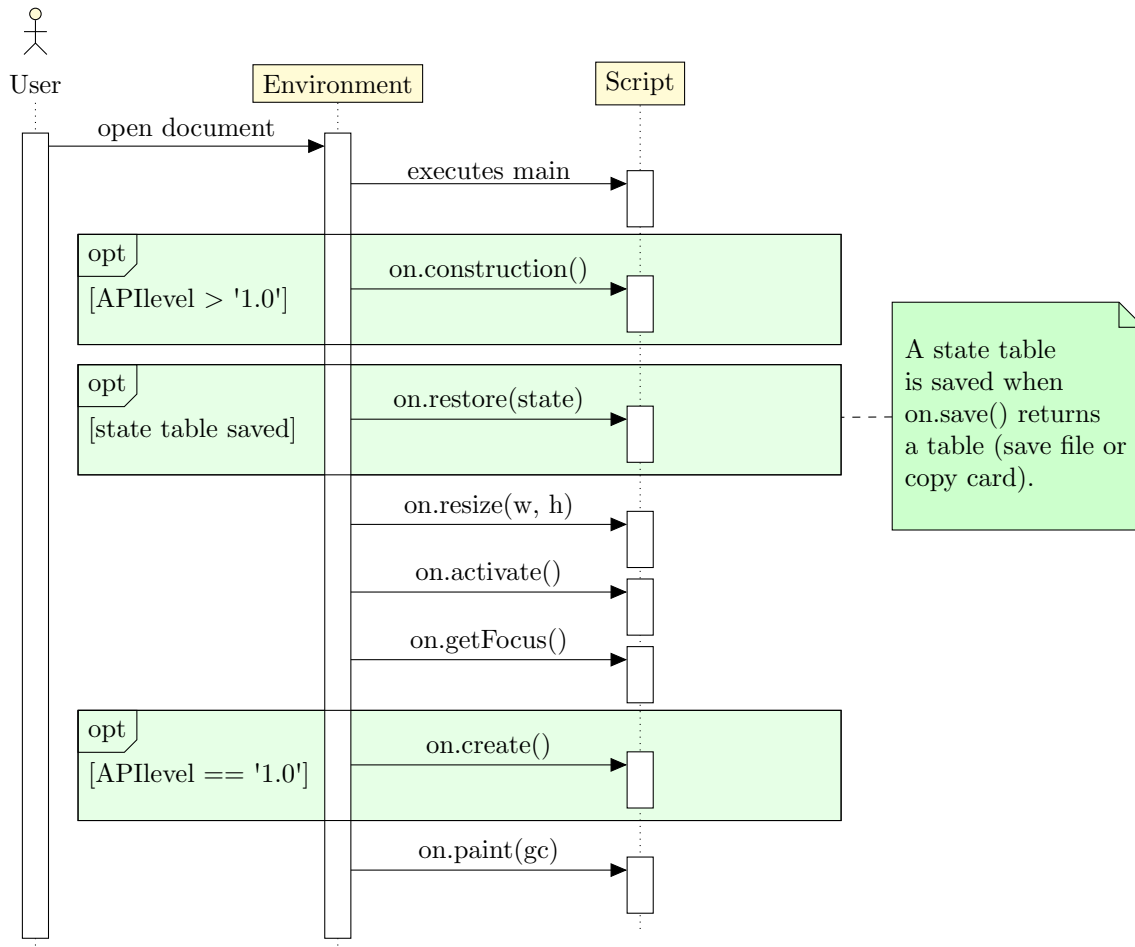


Figure 8.1: Open Document Sequence Chart

## 8.1 activate

`on.activate()`

This routine is called when the script application is activated. The dimensions of the drawing window cannot be initialized at this point, so it is not a good place to create and position graphical elements if they depend on the window size.

**Introduced in `platform.apiLevel = '1.0'`**

## 8.2 arrowDown

`on.arrowDown()`

This routine is called when the user presses the down arrow key.

**Introduced in `platform.apiLevel = '1.0'`**



## 8.3 arrowKey

```
on.arrowKey(key)
```

This routine is called when the user presses an arrow key. The **key** parameter may be “up”, “down”, “left”, or “right”. This routine is not called if the script implements a specific arrow key handler (on.arrowDown for instance) for the particular arrow key type.

**Introduced in platform.apiLevel = ‘1.0’**

## 8.4 arrowLeft

```
on.arrowLeft()
```

This routine is called when the user presses the left arrow key.

**Introduced in platform.apiLevel = ‘1.0’**

## 8.5 arrowRight

```
on.arrowRight()
```

This routine is called when the user presses the right arrow key.

**Introduced in platform.apiLevel = ‘1.0’**

## 8.6 arrowUp

```
on.arrowUp()
```

This routine is called when the user presses the up arrow key.

**Introduced in platform.apiLevel = ‘1.0’**

## 8.7 charIn

```
on.charIn(char)
```

This routine is called when the user types a letter, digit, or other character. The parameter **char** is normally a one-byte string, but because it can contain a UTF-8 encoded character, it may be two or more bytes long. It may also contain the letters of a function name from one of the short-cut keys, such as “sin” from the trig menu.

**Introduced in platform.apiLevel = ‘1.0’**

## 8.8 backspaceKey

```
on.backspaceKey()
```

This routine is called when the user presses Backspace on the desktop keyboard or the Del key on the handheld keypad.

**Introduced in platform.apiLevel = '1.0'**

## 8.9 backtabKey

```
on.backtabKey()
```

This routine is called when the user presses Shift + Tab.

**Introduced in platform.apiLevel = '1.0'**

## 8.10 clearKey

```
on.clearKey()
```

This routine is called when the user presses the Clear key on the handheld keypad.

**Introduced in platform.apiLevel = '1.0'**

## 8.11 construction

```
on.construction()
```

This function is guaranteed to fire first before any other event.

**Introduced in platform.apiLevel = '2.0'**

## 8.12 contextMenu

```
on.contextMenu()
```

This routine is called when the user presses the context Menu key.

**Introduced in platform.apiLevel = '1.0'**

## 8.13 copy

```
on.copy()
```

This routine is called when the user selects the Copy command either from a menu or by pressing Ctrl + C.

### Note

Copy is enabled/disabled by `toolpalette.enableCopy(enable)`.

**Introduced in platform.apiLevel = '1.0'**

## 8.14 create

```
on.create()
```

For scripts with `platform.apiLevel ≥ '2.0'`, use `on.construction()` instead.

This routine is called after `resize` and before `paint` when the script application is created. The window size and graphics context are valid at this point. The `on.paint` event handler will be called soon after this routine finishes.

It is best to think of this function as an initialization method that fires once automatically.

**Introduced in platform.apiLevel = '1.0'**

**Removed in platform.apiLevel = '2.0'**

## 8.15 createMathBox

```
on.createMathBox()
```

This routine is called when the user presses Ctrl + M or inserts a Math Box (Expression Box). The implementation for this callback should call the corresponding 2D editor to insert a math box if applicable.

**Introduced in platform.apiLevel = '2.0'**

## 8.16 cut

```
on.cut()
```

This routine is called when the user selects the Cut command either from a menu or by pressing Ctrl + X.

### Note

Cut is enabled/disabled by `toolpalette.enableCut(enable)`.

**Introduced in platform.apiLevel = '1.0'**

## 8.17 deactivate

```
on.deactivate()
```

This routine is called when the script is deactivated. This happens when the user moves the focus to another page or to another application on the same page.

**Introduced in platform.apiLevel = '1.0'**

## 8.18 deleteKey

```
on.deleteKey()
```

This routine is called when the user presses the Delete key on the desktop keyboard. This is not the Del key on the handheld keypad.

**Introduced in platform.apiLevel = '1.0'**

## 8.19 destroy

```
on.destroy()
```

This routine is called just before the script application is deleted. A script app is deleted when it is cut to the Clipboard and when the document that contains it is closed.

**Introduced in platform.apiLevel = '1.0'**

## 8.20 enterKey

```
on.enterKey()
```

This routine is called when the user presses the Enter key.

**Introduced in platform.apiLevel = '1.0'**

## 8.21 escapeKey

```
on.escapeKey()
```

This routine is called when the user presses the Esc key.

**Introduced in platform.apiLevel = '1.0'**

## 8.22 getFocus

```
on.getFocus()
```

This routine is called when the script receives user input focus.

**Introduced in platform.apiLevel = '2.0'**

## 8.23 getSymbolList

```
on.getSymbolList()
```

This routine is called when the script app symbol list is being serialized to the Clipboard. The script app returns a list of names of variables in the symbol table that it needs to copy with it to the Clipboard. The TI-Nspire™ software copies the names and values of the variables along with the script app. Then when the user pastes the script app in another problem, the system adds the companion variables to the problem symbol table.

As a remark, `on.getSymbolList()` is called when a page containing a script app is copied, but not when a problem containing a script app is copied. This is because the entire symbol table is copied when the problem is copied.

For example, the following function indicates that it needs variable **f1** to be copied with the app to the Clipboard. The value of **f1** will be added to the symbol table when it is pasted into another problem even in another TNS document.

Listing 8.2: Example for `getSymbolList`

```
function on.getSymbolList()  
    return {"f1"}  
end
```

Introduced in `platform.apiLevel = '2.0'`

## 8.24 grabDown

```
on.grabDown(x, y)
```

This routine is called in these situations:

- When the user presses and holds the Select key on a handheld
- When the user presses Ctrl + Select on a handheld
- When the user presses the middle mouse button over an active card on the desktop

`x` & `y` are always zero

The `grabDown` and `grabUp` events prevent the generation of a `mouseUp` event in all cases. They will be preceded by a `mouseDown` event when generated by pressing and holding the Select key on a device.

Introduced in `platform.apiLevel = '1.0'`

## 8.25 grabUp

```
on.grabUp(x, y)
```

This routine is called when the mouse button is released while grab is in effect.

x & y are always zero

Introduced in `platform.apiLevel = '1.0'`

## 8.26 help

```
on.help()
```

This routine is called when the user presses the Help key. On the desktop, the Help key is Ctrl + Shift + ?. On the handheld, it is Ctrl + ?, the control key over the Trig button.

Introduced in `platform.apiLevel = '1.0'`

## 8.27 keyboardDown

```
on.keyboardDown()
```

This routine is only called on touch-enabled platforms. It indicates that any docked keyboard has been hidden by the user or the script by calling `touch.keyboardShow(false)`

Introduced in `platform.apiLevel = '2.2'`

## 8.28 keyboardUp

```
on.keyboardUp(keyboardOverlapHeight)
```

This routine is only called on touch-enabled platforms. It indicates that a docked keyboard opened on the screen and may overlap the script content. The parameter `keyboardOverlapHeight` provides the height if an overlap occurs. The return value of this routine controls if user scrolling should be enabled via the pan gesture. If returning `true` user scrolling is enabled otherwise (`false`) scrolling needs to be implemented by the script in terms of alternating the content drawn by `on.paint()`. The default value is `true`.

Introduced in `platform.apiLevel = '2.2'`

## 8.29 loseFocus

```
on.loseFocus()
```

This routine is called when the script loses user input focus.

**Introduced in platform.apiLevel = '2.0'**

## 8.30 mouseDown

```
on.mouseDown(x, y)
```

This routine is called when the user clicks the mouse. **x** and **y** are in window-relative pixel coordinates.

### Note

This event will NOT be generated if the right mouse button is being held down.

**Introduced in platform.apiLevel = '1.0'**

## 8.31 mouseMove

```
on.mouseMove(x, y)
```

This routine is called when the user moves the mouse pointer. The mouse button does not have to be pressed to receive these events.

**Introduced in platform.apiLevel = '1.0'**

## 8.32 mouseUp

```
on.mouseUp(x, y)
```

This routine is called when the user releases the mouse button.

### Note

This event will NOT be generated in the following cases:

- The preceding mouseDown event was blocked because the right mouse button was down already.
- The preceding mouseDown event was not handled.

**Introduced in platform.apiLevel = '1.0'**



### 8.33 paint

```
on.paint(gc, x, y, width, height)
```

This routine is called when the script application window needs to be painted. The gc graphics context is used in the script code to draw on the window. Additionally it provides the rectangle to be painted. Usually the provided rectangle will match the one provided to `invalidate()` (subsection 14.7.2 on page 55) however the system might merge multiple consecutive calls to `invalidate` in one single paint rectangle. This merge optimization varies based on platform and screen resolution.

**Introduced in `platform.apiLevel = '1.0'`**

**Extended in `platform.apiLevel = '2.4'`**

### 8.34 paste

```
on.paste()
```

This routine is called when the user selects the Paste command either from a menu or by pressing Ctrl + V.

#### Note

Paste is enabled/disabled by `toolpalette.enablePaste(enable)`.

**Introduced in `platform.apiLevel = '1.0'`**

### 8.35 propertiesChanged

```
on.propertiesChanged(propertiesTable)
```

This routine is called on property changes. Currently all property changes are propagated as unsolicited events. Future API level may require registration for certain properties.

Property	Data Format	Description
'locale'	language code, same as <code>locale.name()</code>	Provides the language selected if changed by the user (only supported on the family of handhelds)

**Introduced in `platform.apiLevel = '2.2'`**

## 8.36 `resize`

```
on.resize(width, height)
```

This routine is called when the script application window changes size. This is a good place to initialize (or relayout) graphical objects based on the window size.

**Introduced in `platform.apiLevel = '1.0'`**

## 8.37 `restore`

```
on.restore(state)
```

This routine is called when the script application is restored from its saved state in a document or when the app is pasted into a document. It is called only if the state was saved with the application when it was previously copied to the Clipboard or saved in a document. See the `on.save` handler.

The parameter **state** is the table that the `on.save` event handler returned.

### **Warning**

Functionality that is not available during initialization is also not usable within `on.restore`. Among the functions that cannot be called are `math.eval` and `platform.isDeviceModeRendering`.

**Introduced in `platform.apiLevel = '1.0'`**

## 8.38 `returnKey`

```
on.returnKey()
```

This routine is called when the user presses the Return key on the handheld keypad.

**Introduced in `platform.apiLevel = '1.0'`**

## 8.39 rightMouseDown

```
on.rightMouseDown(x, y)
```

This routine is called when the user clicks the right mouse button. **x** and **y** are in window-relative pixel coordinates.

### Note

Only available on the desktop version.

Mouse events are exclusive, which means that a rightMouseDown event cannot occur while the left mouse button is being held down and vice versa.

**Introduced in platform.apiLevel = '1.0'**

## 8.40 rightMouseUp

```
on.rightMouseUp(x, y)
```

This routine is called when the user releases the right mouse button.

### Note

Only available on the desktop version.

This event will NOT be generated in the following cases:

- The preceding rightMouseDown event was blocked because the left mouse button was already down.
- The preceding rightMouseDown event was not handled.

**Introduced in platform.apiLevel = '1.0'**

## 8.41 save

```
on.save()
```

This routine is called when the script app is saved to the document or copied to the Clipboard. The script should return a table of data needed to properly restore when the on.restore event handler is called.

**Introduced in platform.apiLevel = '1.0'**

## 8.42 tabKey

```
on.tabKey()
```

This routine is called when the user presses the Tab key.

**Introduced in platform.apiLevel = '1.0'**

## 8.43 timer

```
on.timer()
```

If the script application implements on.timer, the system calls this routine each time the timer ticks.

**Introduced in platform.apiLevel = '1.0'**

## 8.44 varChange

```
on.varChange(varlist)
```

This routine is called when a monitored variable is changed by another application. The **varlist** is a list of variable names whose values were changed. This handler must return a value to indicate if it accepts the new value(s) or vetoes the change.

Valid return values are:

Value	Brief Description	Comment
0	Success	The script application accepts the change.
-1	Veto range	The new value is unsatisfactory because it is outside the acceptable range, which is too low or too high.
-2	Veto type	The new value is unsatisfactory because its type cannot be used by the script application.
-3	Veto existence	Another application deleted the variable, and this application needs it.

**Introduced in platform.apiLevel = '1.0'**

## Chapter 9

# Graphics Library

A graphics context is a module that has a handle to the script’s graphics output window and a library of graphics routines that are used to draw on the window. A graphics context is supplied to the script **on.paint** event handler each time the window needs to be redrawn.

The graphics context employs a pixel-based coordinate system with the origin in the upper left corner of the drawing window.

### 9.1 clipRect

```
gc:clipRect(op[, x, [y, [width, [height]]]])
```

Sets the clipping rectangle for subsequent graphics operations.

Parameter **op** takes one of the strings “set,” “reset,” “intersect,” or “null”.

Operation	Description
reset	Sets the clipping rectangle to include the entire window. The remaining parameters are ignored and can be left out.
set	Sets the clipping rectangle to the x, y coordinates with the specified width and height. Unspecified parameters default to the system window location and size.
intersect	Removed in platform.apiLevel = ‘2.0’.
null	Sets the clipping rectangle to empty. All subsequent graphics commands are ignored.

Typically the “set” operation is called before drawing, such as for a text string. It is important to call the “reset” operation after drawing the last clipped graphic so that you do not leave a lingering clipping rectangle as a side effect.

**Introduced in platform.apiLevel = ‘1.0’**

## 9.2 drawArc

```
gc:drawArc(x, y, width, height, startAngle, arcAngle)
```

Draws an arc in the rectangle with upper left corner (x,y) and pixel width and height. Both the width and height must be  $\geq 0$ . The arc is drawn beginning at startAngle degrees and continues for endAngle degrees. Zero degrees points to the right, and 90 degrees points up (standard mathematical practice but worth mentioning since the y axis is inverted).

To draw a circle, the width and height must be equal in length, and the start and end angles must be 0 and 360. If the width and height are different lengths, this routine draws an oval.

**Introduced in platform.apiLevel = '1.0'**

## 9.3 drawImage

```
gc:drawImage(imageHandle, x, y)
```

Draws an image at (x, y). The image must have been created by a previous call to [image.new\(...\)](#).

**Introduced in platform.apiLevel = '1.0'**

## 9.4 drawLine

```
gc:drawLine(x1, y1, x2, y2)
```

Draws a line from (x1,y1) to (x2,y2).

**Introduced in platform.apiLevel = '1.0'**

## 9.5 drawPolyLine

```
gc:drawPolyLine({x1, y1, x2, y2, ..., xn, yn})
```

Draws a series of lines connecting the (x, y) points. The polygon is not closed automatically. The first x-y coordinate pair must be repeated at the end of the array of points to draw a closed polygon.

**Introduced in platform.apiLevel = '1.0'**

## 9.6 drawRect

```
gc.drawRect(x, y, width, height)
```

Draws a rectangle at (x, y) with the given pixel width and height. Both width and height must be  $\geq 0$ .

**Introduced in platform.apiLevel = '1.0'**

## 9.7 drawString

```
gc.drawString("text", x, y [,verticalalignment])
```

Draws text on the window beginning at pixel location (x,y). Vertical alignment may be “baseline”, “bottom”, “middle”, or “top”. This aligns the text in the height of the characters’ bounding rectangle.

Prior to **platform.apiLevel = '2.3'** “none” was used to specify unspecified alignment. The vertical alignment “none” has been [deprecated](#). Specifying no alignment defaults to “top” and so does “none”.

Returns the x pixel position after the text.

**Introduced in platform.apiLevel = '1.0'**

**Extended in platform.apiLevel = '2.3'**

## 9.8 fillArc

```
gc:fillArc(x, y, width, height, startAngle, endAngle)
```

Fills an arc with the preset color. Both width and height must be  $\geq 0$ . See [setColorRGB](#) to set the fill color.

**Introduced in platform.apiLevel = '1.0'**

## 9.9 fillPolygon

```
gc:fillPolygon({x1, y1, x2, y2, ... xn, yn})
```

Fills a polygon with the preset color. The array of points bounds the polygon. To set the fill color, see [setColorRGB](#).

**Introduced in platform.apiLevel = '1.0'**

## 9.10 fillRect

```
gc:fillRect(x, y, width, height)
```

Fills a rectangle with the preset color. Both the width and height must be  $\geq 0$ . To set the fill color, see [setColorRGB](#).

**Introduced in platform.apiLevel = '1.0'**

## 9.11 getStringHeight

```
gc:getStringHeight("text")
```

Returns the pixel height of the text. The pixel height is determined by the font setting previously set by a call to `setFont`.

**Introduced in platform.apiLevel = '1.0'**

## 9.12 getStringWidth

```
gc:getStringWidth("text")
```

Returns the pixel width of text. The pixel width is calculated using the font setting previously set by a call to `setFont`.

**Introduced in platform.apiLevel = '1.0'**



## 9.13 setColorRGB

```
gc:setColorRGB(red, green, blue)
gc:setColorRGB(0xRRGGBB) -- API Level > '1.0'
```

Sets the color for subsequent draw and fill routines. The red, green, and blue components of the color are values in the range of 0 to 255. Black is 0,0,0 and white is 255,255,255. Alternately, a single value can be passed in. The components of this single value are blue + 255 \* (green + 255 \* red).

**Introduced in platform.apiLevel = '1.0'**

**Extended in platform.apiLevel = '2.0'**

## 9.14 setFont

```
gc:setFont(family, style, size)
```

Sets the font for drawing text and measuring text size. Family may be “sansserif” or “serif”. Style may be “r” for regular, “b” for bold, “i” for italic, or “bi” for bold italic.

The point size of the font is restricted on the TI-Nspire™ CX and older handhelds. Choose one of these sizes: 7, 9, 10, 11, 12, or 24. Any font size supported by Windows® or Mac OS® can be used on the desktop software.

Returns the font family, style, and size previously in effect.

**Introduced in platform.apiLevel = '1.0'**

## 9.15 setPen

```
gc:setPen([thickness[, style]])
```

Sets the pen for drawing lines and borders. Thickness may be “thin”, “medium”, or “thick”. If the thickness is not specified, it defaults to “thin”. The style can be “smooth”, “dotted”, or “dashed”. If the style is not specified, it defaults to “smooth”.

**Introduced in platform.apiLevel = '1.0'**

# Chapter 10

## Image Library

An “image” object is a container for graphical images, typically small GUI objects such as buttons, arrowheads, and other such graphical adornments.

Starting with `platform.apiLevel = '2.3'` this library has been reworked to image resources rather than images encoded as strings inside the script itself. Please refer to [section B.1](#) on page 163 for details about the deprecated behavior.

### 10.1 new

```
img = image.new(string) -- API Level < 2.3  
img = image.new(resource) -- API Level 2.3
```

This function returns a new image object from an image resource or string, based on the API level. These two different kinds of image description cannot be mixed within one script. Image resources support alpha blending on all platforms of the TI-Nspire™ product family.

For details about authoring image resources please refer to the Script Editor section in either the teacher or student [TI-Nspire™ software guidebook](#).

**Introduced in `platform.apiLevel = '1.0'`**

**Extended in `platform.apiLevel = '2.3'`**

### 10.2 copy

```
cimage = image:copy(width, height)
```

Returns a copy of the input image scaled to fit the specified pixel width and height.

The width and height default to the size of the input image.

**Introduced in `platform.apiLevel = '1.0'`**

## 10.3 height

```
h = image.height()
```

Returns the pixel height of the image.

**Introduced in platform.apiLevel = '1.0'**

## 10.4 rotate

```
rimage = image.rotate(angle)
```

Returns a copy of the input image rotated counterclockwise by **angle** degrees.

**Introduced in platform.apiLevel = '2.0'**

## 10.5 width

```
w = image.width()
```

Returns the pixel width of the image.

**Introduced in platform.apiLevel = '1.0'**

## Chapter 11

# Locale Library

### 11.1 name

```
locale.name()
```

Returns the name of the current locale. The locale name is a two-letter language code. The language code may be followed by an underscore and two-letter country code.

**Introduced in `platform.apiLevel = '1.0'`**

## Chapter 12

# Math Library Extension

In addition to the functions that come with the standard Lua math library, there is an interface to the TI-Nspire™ math server that allows access to the advanced mathematical features of the TI-Nspire™ product.

### Note

The TI-Nspire™ math server uses a number of unicode characters. For example, the math server uses Unicode character U+F02F, *i*, UTF-8 character “\239\128\175”, for imaginary numbers and another special character for the exponent for a scientific notation, small capital letter “E”.

See <http://en.wikipedia.org/wiki/UTF-8> for a description of how to convert unicode to UTF-8 and vice versa. See [TI-Nspire™ Reference Guide](#) for a list of unicode characters used in TI-Nspire™ software.

All results from the TI-Nspire™ math server are returned as full-precision expressions. To limit the precision of the result to the display digits, retrieve the current display digits via `math.getEvalSettings()` and apply the appropriate precision before displaying the value returned by the TI-Nspire™ math server.

## 12.1 eval

```
math.eval(math_expression) -- platform.apiLevel = '2.0'  
math.eval(math_expression [,exact]) -- platform.apiLevel = '1.0'
```

This function sends an expression or command to the TI-Nspire™ math server for evaluation. The input expression must be a string that the TI-Nspire™ math server can interpret and evaluate.

The second parameter, **exact**, (**platform.apiLevel = '1.0'** only) is meaningful only with the Computer Algebra System. If true, it instructs the math server to calculate and return exact numerical results when it can. The default value of **exact** is false, in which case the math server attempts to calculate an approximate result.

Beginning with **platform.apiLevel = '2.0'**, the evaluation is performed using the current document settings, except that all evaluations are performed at full precision in approximate mode. The current document settings can be overridden by [math.setEvalSettings](#).

If the math server evaluates the expression successfully, it returns the results as a fundamental Lua data type. If the math server cannot evaluate the expression because of a syntax, simplification, or semantic error, **eval** returns two results: nil and an error number meaningful to the math server. (The error numbers are documented in the [TI-Nspire™ Reference Guide - Error Codes and Messages for math.eval](#).) If the math server calculates a symbolic result, it cannot be represented as a fundamental Lua type, so **eval** returns nil and the string “incompatible data type.”

### Example

To evaluate **f1** for a given value in **x**, the parameter **x** must be converted to a string, and then any embedded “e” must be replaced with Unicode character U+F000.

Listing 12.1: Converting a Lua Number to a String to be Used in **math.eval()** (E Notation)

```
local mx = tostring(x):gsub("e", string.uchar(0xF000))  
local expr = "f1(" .. mx .. ")"  
return math.eval(expr)
```

### Note

Because **math.eval** always does calculations in approximate mode, things like Boolean logic and some conversions will throw an error:

**r,e = math.eval('1 and 2')** returns “Argument must be a Boolean expression or integer” error

**r,e = math.eval("0@>Base10")** returns “Domain Error”

**math.evalStr** works fine in such cases.

### Warning

**math.eval** is not available during script initialization.

Introduced in **platform.apiLevel = '1.0'**

Extended in **platform.apiLevel = '2.0'**

## 12.2 evalStr

```
math.evalStr(math_expression)
```

This function sends an expression or command to the TI-Nspire™ math server for evaluation. The input expression must be a string that the TI-Nspire™ math server can interpret and evaluate. The evaluation is performed using the current document settings, which can be overridden by [math.setEvalSettings](#). NOTE: All evaluations are performed at full precision regardless of the document settings or overrides.

If the math server evaluates the expression successfully, it returns the results as a string. The **evalStr** function returns no result if the math server does not return a calculated result. If the math server cannot evaluate the expression because of a syntax, simplification, or semantic error, **evalStr** returns two results: nil and an error number meaningful to the math server.

### Scientific Notation

The evaluation of “10.2^20” (document settings in auto mode) returns the following result: 1.4859473959784□20. A closer look at the result string reveals the box character as “\239\128\128”, which is the Unicode character U+F000 – a small capital letter “E” used inside TI-Nspire™ software for the E notation.

Listing 12.2: **math.evalStr()** Returning Result in E Notation

```
result, error = math.evalStr('10.2^20')
firstFive = table.concat({string.byte(result, 1, 5)}, ' ')
lastFive = table.concat({string.byte(result, 15, 20)}, ' ')
print (result, ':', firstFive, '...', lastFive)
```

Listing 12.2 prints:

```
1.4859473959784□20 : 49 46 52 56 53 ... 52 239 128 128 50 48
```

### Negative numbers

The evaluation of “2-3” returns “-1”. The result string will be encoded as “\226\136\146\49”. “\226\136\146” is Unicode character U+2212, which is a minus sign.

Listing 12.3: **math.evalStr()** Returning Negative Numbers

```
result, error = math.evalStr('2-3')
print (result, ':', string.byte(result, 1, 10))
```

Listing 12.3 prints:

```
-1 : 226 136 146 498
```

Introduced in `platform.apiLevel = '2.0'`

## 12.3 getEvalSettings

```
math.getEvalSettings()
```

Returns a table of tables with the document settings that are currently being used by **math.eval**. These settings are equivalent to the current document settings unless a call has been made to **setEvalSettings**.

Listing 12.4: TI-Nspire™ Software Default Settings Returned by **getEvalSettings**

```
{  
  {'Display Digits', 'Float6'},  
  {'Angle Mode', 'Radian'},  
  {'Calculation Mode', 'Auto'},  
  {'Real or Complex Format', 'Real'},  
  {'Exponential Format', 'Engineering'},  
  {'Vector Format', 'Normal'},  
  {'Base', 'Decimal'},  
  {'Unit System', 'SI'}, }  
}
```

Introduced in `platform.apiLevel = '2.0'`



## 12.4 setEvalSettings

```
math.setEvalSettings(settingStructure)
```

This function is used to override one or more of the current document settings for all subsequent math evaluations performed by `math.eval` and `math.evalStr`. It does not change the document context settings. The setting structure is a table of tables. Each inner table consists of the name of the document setting to override and the name of the value to use instead.

Listing 12.5: Calling `math.setEvalSettings()` using a table with names

```
settings = {
  {'Unit System', 'Eng/US'},
  {'Calculation Mode', 'Approximate'},
  {'Real or Complex Format', 'Polar'},
  {'Exponential Format', 'Engineering'}
}
```

```
math.setEvalSettings(settings)
```

For user convenience, `setEvalSettings` also accepts the ordinal number of the setting to override and the ordinal number of the value to use instead. The ordinal numbers to use correspond to the order of the settings and their values found at File > Settings > Document Settings.

Listing 12.6: Calling `math.setEvalSettings()` using a table with ordinal number

```
settingsTable = {
  {2, 3},
  {4, 3},
  {6, 3},
  {8, 2}
}
```

```
math.setEvalSettings(settingsTable)
```

In fact, `setEvalSettings` accepts any combination of names and ordinal numbers. So the following example is also valid.

Listing 12.7: Calling `math.setEvalSettings()` using a table with combined names and numbers

```
settings = {
  {3, 'Exact'},
  {'Angle Mode', 2},
  {'Real or Complex Format', 'Polar'},
  {8, 2}
}
```

```
math.setEvalSettings(settings)
```

The function `math.setEvalSettings` may be called at any point in the script app. The modified document settings are used by `math.eval` for all subsequent calls within the script app (unless modified by a subsequent call to `setEvalSettings`).

## Precision of Results

All results from the TI-Nspire™ math server are returned as full-precision expressions. If users want to limit the display digits, they must call `math.getEvalSettings()` and apply the appropriate precision before displaying the value returned by the TI-Nspire™ math server.

**Introduced in `platform.apiLevel = '2.0'`**

# Chapter 13

## Module Library

```
require '<library name>'
```

Use **require** to load predefined libraries in TI-Nspire™ software. Please see the following table.

The behavior of **require** is the same as in standard Lua, but the available libraries are restricted. User-defined libraries are not supported.

Library	Description
color	Table defining colors used in TI-Nspire™ software to color objects using the color picker.
physics	Loads the <a href="#">physics</a> module.
ble	Basic <i>Bluetooth</i> ® LE Interface
bleCentral	<i>Bluetooth</i> ® LE Interface for the central role

### Colors defined in color table:

black	darkgray	gray	mediumgray	lightgray	white
navy	blue	brown	red	magenta	orange
yellow	green	dodgerblue			

Introduced in `platform.apiLevel = '2.0'`

# Chapter 14

## Platform Library

Platform specific information is available through the platform library.

### 14.1 apiLevel

```
platform.apiLevel
```

Uniquely identifies the Script environment. If the script does not request a desired API level it will always default to the API level the script was created with.

Requesting a non-supported API level will result in the highest supported but below the requested API level supported by the TI-Nspire™ software version running the script. But requesting an API level below **platform.apiLevel = '1.0'** will result in the current API level of TI-Nspire™ software version running the script. Please see [section A.1](#) on page 159 for more details.

#### Note

- If present, the `platform.apiLevel = 'X.X'` statement should be in the main part of the script only. It is advisable to place it on the first line of the script.
- Dynamically loaded scripts (`load()` or `loadstring()`) will use the same “`platform.apiLevel = 'X.X'`” as the main script. Requesting to change the API level within dynamically loaded scripts causes an error.

**Introduced in `platform.apiLevel = '2.0'`** <sup>1</sup>

**Extended in `platform.apiLevel = '2.3'`**

---

<sup>1</sup>Please see [section B.4](#) on page 164 for details about the original behavior.

## 14.2 hw

```
platform.hw()
```

Returns a numeric value that indicates the CPU speed of the host hardware. The higher the number, the faster the hardware.

---

level	host hardware
3	TI-Nspire™ family of handhelds
7	Microsoft® Windows®, Mac® and TI-Nspire™ App

---

Introduced in `platform.apiLevel = '2.0'`

## 14.3 isColorDisplay

```
platform.isColorDisplay()
```

Returns **true** if the display of the host platform is color. Returns **false** if the display is grayscale.

Introduced in `platform.apiLevel = '1.0'`

## 14.4 isDeviceModeRendering

```
platform.isDeviceModeRendering()
```

Returns **true** if the script is running on the handheld or in the emulator of the desktop software. Returns **false** if the script is running in the normal view of the desktop software.

### Note

`platform.isDeviceModeRendering` is not available during script initialization or within `on.restore`.

Introduced in `platform.apiLevel = '1.0'`

## 14.5 isTabletModeRendering

```
platform.isTabletModeRendering()
```

Returns **true** if the script is running on a tablet supporting touch otherwise **false**.

Introduced in `platform.apiLevel = '2.2'`

## 14.6 registerErrorHandler

```
platform.registerErrorHandler(function(lineNumber, errorMessage,  
                                   callStack, locals) ... end)
```

This function sets the error handler callback function for the script. Setting an error handler callback function provides control over what happens when an error is encountered in the script. Returning a **true** value prevents reporting the Error to the user. The script will continue executing on the next event.

### Note

The error handler callback function is not called for errors that occur during initialization or within **on.restore**.

**Introduced in platform.apiLevel = '2.0'**

## 14.7 window

```
platform.window
```

Returns the window object that the script application currently owns. The window consists of the portion of the page allotted to the script app. Several applications can be visible when the page is arranged in a split layout. Each visible application has its own window.

The window object has several methods of particular interest.

**Introduced in platform.apiLevel = '1.0'**

### 14.7.1 height and width

```
platform.window.height()  
platform.window.width()
```

Routines **height()** and **width()** return the pixel height and width respectively of the display window.

**Introduced in platform.apiLevel = '1.0'**

### 14.7.2 invalidate

```
platform.window.invalidate(x, y, width, height)
```

This function invalidates a region of the window and forces it to repaint. *x* and *y* default to (0, 0) and *width* and *height* default to the pixel width and height of the window. The entire window can be forced to repaint with a call to **platform.window.invalidate()**, which allows all parameters to take their default values.

For performance reasons, especially for large screen resolutions, it is advisable to invalidate not all of the screen but the smallest possible region.

### Caution

Please make sure for moving objects to invalidate both the old and the new location of the object. In addition, based on the selected pen setting of the graphics library, drawing lines and other shapes may draw to some degree outside of the specified area. The extent of this area around the specified area might vary in addition by platform. Therefore, add some additional space around the invalidate region to avoid drawing artifacts.

Invalidating multiple regions at a time might result in one or multiple calls to **on.paint** depending on the region and the platform. Therefore the implementation of **on.paint** should not make any assumptions about the region to draw, but always draw all of the screen.

**Introduced in platform.apiLevel = '1.0'**

### 14.7.3 setBackgroundColor

```
platform.window.setBackgroundColor([0xRRGGBB])
```

Sets the background color for the Script Application. If no color is provided, it defaults to none, causing the background color of the Script Application to be the one of the system which is white.

**Introduced in platform.apiLevel = '2.4'**

### 14.7.4 setFocus

```
platform.window.setFocus(boolean)
```

This function sets the focus to the main window. Any focus of other objects is removed (currently only D2Editor).

**Introduced in platform.apiLevel = '2.0'**

### 14.7.5 getScrollHeight

```
platform.window.getScrollHeight()
```

This function returns the current scroll height if a docked keyboard is shown or 0 otherwise. Therefore the return value will always be 0 on platforms not supporting touch.

See [touch.isKeyboardAvailable\(\)](#) for details about keyboard availability.

**Introduced in platform.apiLevel = '2.2'**

## 14.7.6 setScrollHeight

```
platform.window:setScrollHeight()
```

Sets the scroll height if a docked keyboard is shown or is ignored otherwise. The valid range for this function is **0** to **<keyboard overlap height>**. See [on.keyboardUp\(\)](#) for keyboard overlap height.

Introduced in `platform.apiLevel = '2.2'`

## 14.8 withGC

```
platform.withGC(function, ...)
```

Executes `function(... , gc)` within a non-painting graphics context and returns all return values from `function()`. It is used to support layout procedures that measure the width and height of strings outside of the paint context. It is a good practice to separate the layout from the paint routine to enhance the performance of the script. A layout may happen during `on.resize()` and when data is changing based on user interaction or timer expiration. The script should not assume that any state, like a font size, is preserved from one call of `platform.withGC` to the next call of `platform.withGC`.

This graphics context cannot be used to draw.

Listing 14.1: Example of Using `withGC()` to get the Pixel Length and Height of a String

```
function getHeightWidth(str, gc)
  gc:setFont('serif', 'b', 12) -- Set the font
  width = gc:getStringWidth(str) -- Pixel length of str
  height = gc:getStringHeight(str) -- Pixel height of str
  return height, width
end

height, width = platform.withGC(getHeightWidth, 'Hello World')
```

Introduced in `platform.apiLevel = '2.0'`



## Chapter 15

# String Library Extension

In addition to the standard Lua string functions, a few routines aid handling Unicode strings.

### 15.1 split

```
string.split(str [,delim])
```

Divides `str` into substrings based on a delimiter, returning a list of the substrings. The default pattern for the delimiter is white space (“%s+”).

**Introduced in `platform.apiLevel = '1.0'`**

### 15.2 uchar

```
string.uchar(chnum, ...)
```

Unicode characters can be included in strings by encoding them in UTF-8. This routine converts one or more Unicode character numbers into a UTF-8 string.

**Introduced in `platform.apiLevel = '1.0'`**

## 15.3 usub

```
string.usub(str, startpos, endpos)
or
str:usub(startpos, endpos)
```

This routine returns a substring of `str`. It is the Unicode version of `string.sub`. It accounts for multi-byte characters encoded in UTF-8.

### Caution

This is an expensive routine. It allocates a temporary memory buffer during its operation.

Listing 15.1: Examples for `string.usub()`

```
print(string.usub("abc", 1, 1)) -- prints "a"
print(string.usub("abc", 2, 2)) -- prints "b"
print(string.usub("abc", 2, 3)) -- prints "bc"
```

Introduced in `platform.apiLevel = '1.0'`

## Chapter 16

# Timer Library

Each script application has one timer at its disposal. The timer resolution depends on the platform. It is about 0.02 second on the handheld. Please be cautious with short timer periods on the handheld.

The script application should implement the **on.timer()** function to respond to timer expiration.

The timer continues to send ticks to the script application even when its window is not visible on the screen.

The timer is stopped automatically when the document containing the script application is closed or if the script application is deleted from the document.

### 16.1 getMilliSecCounter

```
timer.getMilliSecCounter()
```

Returns the value of the internal millisecond counter. The counter rolls over to zero when it passes  $2^{32}$  milliseconds.

**Introduced in platform.apiLevel = '1.0'**

## 16.2 start

```
timer.start(period)
```

Starts the timer with the given period in seconds. The period must be  $\geq 0.01$  (10 ms). If the timer is already running when this routine is called, the timer is reset to the new period.

**Introduced in platform.apiLevel = '1.0'**

### Caution

`timer.start()` should not be called when processing an `on.timer()` event unless it is the final statement before the `on.timer()` event completes.

## 16.3 stop

```
timer.stop()
```

Stops the timer.

**Introduced in platform.apiLevel = '1.0'**

# Chapter 17

## Tool Palette Library

The tool palette provides a menu from which the user can select commands that invoke functionality of the script app.

### 17.1 register

```
toolpalette.register(menuStructure)
```

The script app uses this routine to register its tool palette with the TI-Nspire™ framework. The menu structure is a table describing the name of each toolbox, the menus that appear in each tool box, and the function to call when the user invokes the menu item.

The function `toolpalette.register()` can be called once in the top level flow of the script app. Once registered, the tool palette is managed automatically by the TI-Nspire™ framework. Up to 15 toolboxes can be created with up to 30 menu items each.

When the user chooses an item from a tool box, the associated function is called with two parameters: the name of the toolbox and the name of the menu item.

A call to `toolpalette.register()` within the paint context might be ignored and should therefore be avoided.

Beginning with `apiLevel` '2.0' `toolpalette.register()` can be called multiple times in the program flow to change dynamically at runtime.

Calling `toolpalette.register(nil)` deactivates the toolpalette.

[Listing 17.1](#) demonstrate the layout of a tool palette's menu structure.

**Introduced in** `platform.apiLevel = '1.0'`

**Extended in** `platform.apiLevel = '2.0'`

Listing 17.1: Registering a Tool Palette

```
menu = {
  {"Mode", -- Tool box "Mode"
    {"Decimal", setDec}, -- Menu item "Decimal" calls setDec()
    {"Hexadecimal", setHex},
    "-", -- Section divider
    {"Signed", setSigned},
    {"Unsigned", setUnsigned},
  },
  {"Boolean",
    {"And", binopAnd},
    {"Or", binopOr},
  },
} toolpalette.register(menu)
```

## 17.2 enable

```
toolpalette.enable(toolname, itemname, enable)
```

This routine enables or disables a menu item in the tool palette. Parameter **toolname** is a string containing the name of the top level tool box. Parameter **itemname** is a string containing the name of the menu item. Parameter **enable** is a Boolean value that enables the menu item if true or disables the menu item if false.

This routine returns true if the menu item was properly enabled or disabled. It returns nil if the toolname / itemname pair cannot be found in the registered menu items.

### Note

`toolpalette.register()` must be called prior to `toolpalette.enable()`.

Introduced in `platform.apiLevel = '1.0'`

## 17.3 enableCut

```
toolpalette.enableCut(enable)
```

This routine enables or disables the Edit > Cut menu command. Parameter **enable** is a Boolean value that enables the command if true or disables the menu item if false.

Introduced in `platform.apiLevel = '1.0'`

## 17.4 enableCopy

```
toolpalette.enableCopy(enable)
```

This routine enables or disables the Edit > Copy menu command. Parameter **enable** is a Boolean value that enables the command if true or disables the menu item if false.

**Introduced in platform.apiLevel = '1.0'**

## 17.5 enablePaste

```
toolpalette.enablePaste(enable)
```

This routine enables or disables the Edit > Paste menu command. Parameter **enable** is a Boolean value that enables the command if true or disables the menu item if false.

**Introduced in platform.apiLevel = '1.0'**

# Chapter 18

## Variable Library

A symbol table is used by the TI-Nspire™ math engine to calculate and store variables. This library gives scripts access to the variables stored in the symbol table.

Not all variables in the symbol table have compatible types in Lua, but many important variable types are supported: real and integer numbers, strings, and lists of numbers and strings, matrices (represented in Lua as lists of lists), and boolean constants true and false.

### 18.1 list

```
var.list()
```

This function returns a list of names of variables currently defined in the symbol table.

**Introduced in platform.apiLevel = '1.0'**

### 18.2 makeNumericList

```
var.makeNumericList(name)
```

Creates a list in the symbol table with the given **name**. The list is optimized to hold numeric values. Routines **storeAt** and **recallAt** operate much more efficiently on lists that are created with this function.

#### Usage Note

This function cannot be used to create a numeric matrix. Routines `var.recallAt` and `var.storeAt` documented below will work with matrices but only if they are created by some other means (see [Listing 18.1](#)).



Listing 18.1: Example for Accessing a Matrix via the Variable Library

```
var.store("mat", {{1,2}, {3,4}}) -- creates matrix mat
var.storeAt("mat", 13.3, 1, 1)
val = var.recallAt("mat", 1, 1)
```

Introduced in `platform.apiLevel = '2.0'`

## 18.3 monitor

```
var.monitor(name)
```

Turns on monitoring of the math variable with given **name**. When another application changes the math variable, this script application's `on.varChange` handler is called. See the description of `on.varChange` below. Any other return value from 0 is an error value.

Introduced in `platform.apiLevel = '1.0'`

## 18.4 recall

```
var.recall(name)
```

Returns the value of a math variable with the given **name**. If the type of the named variable has no compatible Lua type, then `nil` and an error message are returned.

Introduced in `platform.apiLevel = '1.0'`

## 18.5 recallAt

```
var.recallAt(name, col [,row])
```

Recalls a value from a cell of a list or matrix in the symbol table. **col** is a 1-based column number of the matrix or list. **row** is a 1-based row number. **row** is only required when recalling a value from a matrix.

This function is optimized to work with numeric values and normally returns a number. If the value of the recalled cell is not numeric, this function returns nil and an error message string.

**Introduced in platform.apiLevel = '2.0'**

## 18.6 recallStr

```
var.recallStr(name)
```

Returns the value of a math variable with the given **name** as a string. Some math types have no compatible Lua type but all math types can be represented as a string. If the value cannot be recalled even as a string, this function returns nil and an error message.

**Introduced in platform.apiLevel = '1.0'**

## 18.7 store

```
var.store(name, value)
```

Stores value as a math variable with the given **name**. If the value cannot be stored, an error message is returned; otherwise, nil is returned.

**Introduced in platform.apiLevel = '1.0'**

## 18.8 storeAt

```
var.storeAt(name, numericValue, col [, row])
```

Stores a numeric value into an element of a math list or matrix with the given **name**. **col** is a 1-based column number of the matrix or list. **row** is a 1-based row number. **row** is only required when storing a value into a matrix.

The value must be numeric. Any other type raises an error.

New values can be appended to a list by storing to one column past the end of the list. This function is useful particularly as an optimization when adding new values to a list during a simulation.

Returns nil on success or “cannot store” if the value cannot be stored at the given index.

**Introduced in platform.apiLevel = ‘2.0’**

## 18.9 unmonitor

```
var.unmonitor(name)
```

Turns off monitoring of the named math variable.

**Introduced in platform.apiLevel = ‘1.0’**

# Chapter 19

## Physics Library

This is an interface library to Chipmunk Physics version 5.3.4. For details about this library see <http://chipmunk-physics.net/release/Chipmunk-5.x/Chipmunk-5.3.4-Docs/>.

To use this library the physics module must be loaded: “**require ('physics')**”.

This library is introduced in `platform.apiLevel = '2.0'`.

### 19.1 Miscellaneous routines

#### 19.1.1 INFINITY

```
infinity = physics.misc.INFINITY()
```

Parameter	Type	Description
infinity	out number	Infinity value

Returns a number representing infinity in the physics engine.

Introduced in `platform.apiLevel = '2.0'`

### 19.1.2 momentForBox

```
inertia = physics.misc.momentForBox(mass, width, height)
```

Parameter	Type	Description
mass	<b>in</b> number	The mass of the box
width	<b>in</b> number	The width of the box
height	<b>in</b> number	The height of the box
inertia	<b>out</b> number	The inertia of the box

This routine computes the moment of inertia for a solid box. This is a useful helper routine for computing the moment of inertia as an input to the [physics.Body\(...\)](#) constructor.

**Introduced in platform.apiLevel = '2.0'**

### 19.1.3 momentForCircle

```
inertia = physics.misc.momentForCircle(mass, innerRadius,  
                                       outerRadius, offBody)
```

Parameter	Type	Description
mass	<b>in</b> number	The mass of the circle
innerRadius	<b>in</b> number	The inner radius of the circle
outerRadius	<b>in</b> number	The outer radius of the circle
offset	<b>in</b> physics.Vect	The offset of the circle from the center of gravity
inertia	<b>out</b> number	The inertia of the circle

This routine computes the moment of inertia for a [circle](#). A solid circle has an inner radius of 0. This is a useful helper routine for computing the moment of inertia as an input to the [physics.Body\(...\)](#) constructor.

**Introduced in platform.apiLevel = '2.0'**

### 19.1.4 momentForPoly

```
inertia = physics.misc.momentForPoly(mass, vertices, offset)
```

Parameter	Type	Description
mass	<b>in</b> number	The mass of the polygon
vertices	<b>in</b> {physics.Vect}	A list of vertices defining the shape of the polygon
offset	<b>in</b> physics.Vect	The offset of the polygon from the center of gravity
inertia	<b>out</b> number	The inertia of the polygon

This routine computes the moment of inertia for a [polygon](#). This is a useful helper routine for computing the moment of inertia as an input to the [physics.Body\(...\)](#) constructor.

**Introduced in platform.apiLevel = '2.0'**

### 19.1.5 momentForSegment

```
inertia = physics.misc.momentForSegment(mass, endPointA,  
                                         endPointB)
```

Parameter	Type	Description
mass	<b>in</b> number	The mass of the segment
endPointA	<b>in</b> physics.Vect	The point defining one end of the segment
endPointB	<b>in</b> physics.Vect	The point defining the other end of the segment
inertia	<b>out</b> number	The inertia of the segment

This routine computes the moment of inertia for a [segment](#). The end points can be in either world or local coordinates. This is a useful helper routine for computing the moment of inertia as an input to the [physics.Body\(...\)](#) constructor.

**Introduced in platform.apiLevel = '2.0'**

## 19.2 Vectors

A vector is a 2-dimensional object with x and y components. Its type is `TI.cpVect`.

### 19.2.1 Vect

```
vector = physics.Vect(x, y)
vector = physics.Vect(angle)
vector = physics.Vect(vect)
```

Parameter	Type	Description
x	<b>in</b> number	The <b>x</b> component of the vector
y	<b>in</b> number	The <b>y</b> component of the vector
angle	<b>in</b> number	An angle in radians
vect	<b>in</b> physics.Vect	A vector
vector	<b>out</b> physics.Vect	A vector

Creates a vector with initial x and y component values. The second form creates a unit vector pointing in direction angle. The third form creates a copy of the input vector.

**Introduced in platform.apiLevel = '2.0'**

### 19.2.2 add

```
sum = physics.Vect:add(vec)
```

Parameter	Type	Description
self	<b>in</b> physics.Vect	The input vector
vec	<b>in</b> physics.Vect	A vector to add to <b>self</b>
sum	<b>out</b> physics.Vect	The vector sum of <b>self</b> and <b>vec</b>

Returns the vector sum of **self** and **vec**.

The Vect class also implements the addition operator (+). Therefore vectors **v1** and **v2** can be added with the expression **v1 + v2**.

**Introduced in platform.apiLevel = '2.0'**

### 19.2.3 clamp

```
clamped = physics.Vect:clamp(len)
```

Parameter	Type	Description
self	<b>in</b> physics.Vect	The input vector
len	<b>in</b> number	The maximum length of the vector
clamped	<b>out</b> physics.Vect	A new vector with a length no longer than <b>len</b>

Returns a copy of **self** clamped to length **len**.

**Introduced in platform.apiLevel = '2.0'**

### 19.2.4 cross

```
crossprod = physics.Vect:cross(vec)
```

Parameter	Type	Description
self	<b>in</b> physics.Vect	The input vector
vec	<b>in</b> physics.Vect	The vector to cross with <b>self</b>
zmag	<b>out</b> number	The z magnitude of the cross product of <b>self</b> and <b>vec</b>

Returns the z magnitude of the cross product of **self** and **vec**.

**Introduced in platform.apiLevel = '2.0'**

### 19.2.5 dist

```
dist = physics.Vect:dist(vec)
```

Parameter	Type	Description
self	<b>in</b> physics.Vect	The input vector
vec	<b>in</b> physics.Vect	The vector used to find the distance from <b>self</b>
dist	<b>out</b> number	The distance from <b>self</b> to <b>vec</b>

Returns the distance between **self** and **vec**.

**Introduced in platform.apiLevel = '2.0'**



### 19.2.6 distsq

```
distsq = physics.Vect:distsq(vec)
```

Parameter	Type	Description
self	<b>in</b> physics.Vect	The input vector
vec	<b>in</b> physics.Vect	The vector used to find the distance squared from <b>self</b>
distsq	<b>out</b> number	The distance squared from <b>self</b> to <b>vec</b>

Returns the distance squared between **self** and **vec**. For distance comparison, this routine is faster than **physics.Vect:dist**.

**Introduced in platform.apiLevel = '2.0'**

### 19.2.7 dot

```
dotprod = physics.Vect:dot(vec)
```

Parameter	Type	Description
self	<b>in</b> physics.Vect	The input vector
vec	<b>in</b> physics.Vect	The other vector
dotprod	<b>out</b> number	The scalar dot product of <b>self</b> and <b>vec</b>

Returns the scalar dot product of **self** and **vec**.

**Introduced in platform.apiLevel = '2.0'**

### 19.2.8 eql

```
isequ = physics.Vect:eql(vec)
```

Parameter	Type	Description
self	<b>in</b> physics.Vect	The input vector
vec	<b>in</b> physics.Vect	The vector against which to compare with <b>self</b>
isequ	<b>out</b> boolean	True if the components of <b>self</b> equal the components of <b>vec</b>

Returns true if the x and y components of **self** equal those of **vec**. Take the usual precautions when comparing floating point numbers for equality.

The Vect class also implements the equal comparison operator (**==**). Therefore vectors **v1** and **v2** can be compared with the expression **v1 == v2**.

**Introduced in platform.apiLevel = '2.0'**

### 19.2.9 length

```
len = physics.Vect:length()
```

Parameter	Type	Description
self	<b>in</b> physics.Vect	The input vector
len	<b>out</b> number	The length of vector <b>self</b>

Returns the magnitude of **self**.

Introduced in platform.apiLevel = '2.0'

### 19.2.10 lengthsq

```
lensq = physics.Vect:lengthsq()
```

Parameter	Type	Description
self	<b>in</b> physics.Vect	The input vector
lensq	<b>out</b> number	The length squared of vector <b>self</b>

Returns the length squared of **self**. This routine is faster than Vect:length() when you only need to compare lengths.

Introduced in platform.apiLevel = '2.0'

### 19.2.11 lerp

```
v = physics.Vect:lerp(vec, f)
```

Parameter	Type	Description
self	<b>in</b> physics.Vect	The input vector
vec	<b>in</b> physics.Vect	The other vector
f	<b>in</b> number	<b>f</b> is a fractional number from 0 to 1 representing the proportion of distance between <b>self</b> and <b>vec</b>
v	<b>out</b> physics.Vect	A vector interpolated between <b>self</b> and <b>vec</b>

Returns the linear interpolation between **self** and **vec** as a vector. **f** is the fraction of distance between **self** and **vec**.

Note

May not behave as expected for **f** larger than 1.0 or less than 0.

Introduced in platform.apiLevel = '2.0'

### 19.2.12 lerpconst

```
v = physics.Vect:lerpconst(vec, d)
```

Parameter	Type	Description
self	<b>in</b> physics.Vect	The input vector
vec	<b>in</b> physics.Vect	The other vector
d	<b>in</b> number	The distance from <b>self</b> to <b>vec</b> to interpolate a new vector
v	<b>out</b> physics.Vect	

Returns a vector interpolated from **self** towards **vec** with length **d**.

#### Note

May not behave as expected for **d** larger than 1.0 or less than 0.

Introduced in `platform.apiLevel = '2.0'`

### 19.2.13 mult

```
v = physics.Vect:mult(factor)
```

Parameter	Type	Description
self	<b>in</b> physics.Vect	The input vector
factor	<b>in</b> number	The value to multiply by <b>self</b>
v	<b>out</b> physics.Vect	The resulting scaled vector

Multiplies a vector by a factor.

Introduced in `platform.apiLevel = '2.0'`

### 19.2.14 near

```
isnear = physics.Vect:near(vec, distance)
```

Parameter	Type	Description
self	<b>in</b> physics.Vect	The input vector
vec	<b>in</b> physics.Vect	The value to multiply by <b>self</b>
distance	<b>in</b> number	The distance from <b>vec</b>
isnear	<b>out</b> boolean	True if <b>self</b> is within <b>distance</b> of <b>vec</b>

Determines if **self** is near another vector.

Introduced in `platform.apiLevel = '2.0'`

### 19.2.15 neg

```
v = physics.Vect:neg()
```

Parameter	Type	Description
self	<b>in</b> physics.Vect	The input vector
v	<b>out</b> physics.Vect	The resulting negated vector

Returns the negative of **self**.

The Vect class also implements the unary minus operator (**-self**).

**Introduced in platform.apiLevel = '2.0'**

### 19.2.16 normalize

```
normvec = physics.Vect:normalize()
```

Parameter	Type	Description
self	<b>in</b> physics.Vect	The input vector
normvec	<b>out</b> physics.Vect	The resulting normalized vector

Returns a normalized copy of **self**. The length of a normal vector is 1.

**Introduced in platform.apiLevel = '2.0'**

### 19.2.17 normalizeSafe

```
normvec = physics.Vect:normalizeSafe()
```

Parameter	Type	Description
self	<b>in</b> physics.Vect	The input vector
normvec	<b>out</b> physics.Vect	The resulting normalized vector

Returns a normalized copy of **self**. Protects against division by zero.

**Introduced in platform.apiLevel = '2.0'**

### 19.2.18 perp

```
perpvec = physics.Vect:perp()
```

Parameter	Type	Description
self	<b>in</b> physics.Vect	The input vector
perpvec	<b>out</b> physics.Vect	The resulting perpendicular vector

Returns a vector perpendicular to **self**. (90 degree rotation)

Introduced in platform.apiLevel = '2.0'

### 19.2.19 project

```
pvec = physics.Vect:project(vec)
```

Parameter	Type	Description
self	<b>in</b> physics.Vect	The input vector
vec	<b>in</b> physics.Vect	The other vector
pvec	<b>out</b> physics.Vect	The vector of <b>self</b> projected onto <b>vec</b>

Computes the projection of **self** onto another vector.

Introduced in platform.apiLevel = '2.0'

### 19.2.20 rotate

```
rvec = physics.Vect:rotate(vec)
```

Parameter	Type	Description
self	<b>in</b> physics.Vect	The input vector
vec	<b>in</b> physics.Vect	The other vector
rvec	<b>out</b> physics.Vect	The resulting rotated vector

Uses complex multiplication to rotate **self** by **vec**. Scaling will occur if **self** is not a unit vector.

Introduced in platform.apiLevel = '2.0'

### 19.2.21 rperp

```
perpvec = physics.Vect:rperp()
```

Parameter	Type	Description
self	<b>in</b> physics.Vect	The input vector
perpvec	<b>out</b> physics.Vect	The resulting perpendicular vector

Returns a vector perpendicular to **self**. (90 degree rotation)

Introduced in platform.apiLevel = '2.0'

### 19.2.22 setx

```
self = physics.Vect:setx(x)
```

Parameter	Type	Description
self	<b>in</b> physics.Vect	The vector to modify
x	<b>in</b> number	The new value of the <b>x</b> component of the vector
self	<b>out</b> physics.Vect	The input vector is returned as the output

Changes the value of the **x** component of **self**. Returns **self**.

Introduced in platform.apiLevel = '2.0'

### 19.2.23 sety

```
self = physics.Vect:sety(y)
```

Parameter	Type	Description
self	<b>in</b> physics.Vect	The vector to modify
y	<b>in</b> number	The new value of the <b>y</b> component of the vector
self	<b>out</b> physics.Vect	The input vector is returned as the output

Changes the value of the **y** component of **self**. Returns **self**.

Introduced in platform.apiLevel = '2.0'

### 19.2.24 slerp

```
v = physics.Vect:slerp(vec, f)
```

Parameter	Type	Description
self	<b>in</b> physics.Vect	A unit vector
vec	<b>in</b> physics.Vect	The other unit vector
f	<b>in</b> number	<b>f</b> is a fractional number from 0 to 1 representing the proportion of distance between <b>self</b> and <b>vec</b>
v	<b>out</b> physics.Vect	A vector interpolated between <b>self</b> and <b>vec</b>

Computes a spherical linear interpolation between unit vectors **self** and **vec**. See <http://en.wikipedia.org/wiki/Slerp> for a discussion of the meaning, value, and usage of spherical linear interpolation.

Listing 19.1: Spherical Linear Interpolation Example

```
local vect1 = physics.Vect(math.pi/3) -- unit vector
local vect2 = physics.Vect(math.pi/2) -- unit vector
local result = vect1:slerp(vect2, 0.55)
```

#### Note

This routine computes meaningful results only when the two inputs are unit vectors. May not behave as expected for **f** larger than 1.0 or less than 0.

**Introduced in platform.apiLevel = '2.0'**

### 19.2.25 slerpconst

```
v = physics.Vect:slerpconst(vec, angle)
```

Parameter	Type	Description
self	<b>in</b> physics.Vect	A unit vector
vec	<b>in</b> physics.Vect	The other unit vector
angle	<b>in</b> number	The maximum angle between <b>self</b> and <b>vec</b> to interpolate a new vector
v	<b>out</b> physics.Vect	

Returns the spherical linear interpolation from **self** towards **vec**, but by no more than **angle** in radians. See <http://en.wikipedia.org/wiki/Slerp> for a discussion of the meaning, value, and usage of spherical linear interpolation.

#### Note

This routine computes meaningful results only when the two inputs are unit vectors.

**Introduced in platform.apiLevel = '2.0'**

### 19.2.26 sub

```
diff = physics.Vect:sub(vec)
```

Parameter	Type	Description
self	<b>in</b> physics.Vect	The input vector
vec	<b>in</b> physics.Vect	A vector to subtract from <b>self</b>
diff	<b>out</b> physics.Vect	The vector difference between <b>self</b> and <b>vec</b>

Returns the vector difference of **self** and **vec**.

The Vect class also implements the subtraction operator (-). Therefore vector **v2** can be subtracted from **v1** with the expression **v1 - v2**.

Introduced in platform.apiLevel = '2.0'

### 19.2.27 toangle

```
angle = physics.Vect:toangle()
```

Parameter	Type	Description
self	<b>in</b> physics.Vect	The input vector
angle	<b>out</b> number	The angle of <b>self</b>

Returns the angle in radians of **self**.

Introduced in platform.apiLevel = '2.0'

### 19.2.28 unrotate

```
uvec = physics.Vect:unrotate(vec)
```

Parameter	Type	Description
self	<b>in</b> physics.Vect	The input vector
vec	<b>in</b> physics.Vect	The other vector
uvec	<b>out</b> physics.Vect	The resulting unrotated vector

Inverse of physics.Vect:rotate(vec).

Introduced in platform.apiLevel = '2.0'



### 19.2.29 x

```
x = physics.Vect:x()
```

Parameter	Type	Description
self	<b>in</b> physics.Vect	The input vector
x	<b>out</b> number	The value of the <b>x</b> component of the vector

Returns the value of the **x** component of the input vector.

**Introduced in platform.apiLevel = '2.0'**

### 19.2.30 y

```
y = physics.Vect:y()
```

Parameter	Type	Description
self	<b>in</b> physics.Vect	The input vector
y	<b>out</b> number	The value of the <b>y</b> component of the vector

Returns the value of the **y** component of the input vector.

**Introduced in platform.apiLevel = '2.0'**

## 19.3 Bounding Boxes

A bounding box is a structure that contains the left, bottom, right, and top edges of a box. Its type is `TI.cpBB`.

### 19.3.1 BB

```
bb = physics.BB(l, b, r, t)
```

Parameter	Type	Description
l	<b>in</b> number	left
b	<b>in</b> number	bottom
r	<b>in</b> number	right
t	<b>in</b> number	top
bb	<b>out</b> physics.BB	A bounding box with boundaries left, bottom, right, and top

Returns a new bounding box with the given initial edges.

**Introduced in platform.apiLevel = '2.0'**

### 19.3.2 b

```
bottom = physics.BB:b()
```

Parameter	Type	Description
self	<b>in</b> physics.BB	The input bounding box
bottom	<b>out</b> number	The bottom edge of the bounding box

Returns the bottom edge of the bounding box.

Introduced in `platform.apiLevel = '2.0'`

### 19.3.3 clampVect

```
cvec = physics.BB:clampVect(vec)
```

Parameter	Type	Description
self	<b>in</b> physics.BB	The input bounding box
vec	<b>in</b> physics.Vect	A vector
cvec	<b>out</b> physics.Vect	A vector clamped to the bounding box

Returns a copy of `vec` clamped to the bounding box.

Introduced in `platform.apiLevel = '2.0'`

### 19.3.4 containsBB

```
bool = physics.BB:containsBB(other)
```

Parameter	Type	Description
self	<b>in</b> physics.BB	The input bounding box
other	<b>in</b> physics.BB	The other bounding box
bool	<b>out</b> boolean	True if <b>self</b> completely contains the <b>other</b> bounding box

Determines if a bounding box contains another bounding box.

Introduced in `platform.apiLevel = '2.0'`

### 19.3.5 containsVect

```
bool = physics.BB:containsVect(vec)
```

Parameter	Type	Description
self	<b>in</b> physics.BB	The input bounding box
vec	<b>in</b> physics.Vect	A vector
bool	<b>out</b> boolean	True if <b>self</b> contains vector <b>vec</b>

Determines if a bounding box contains a [vector](#).

Introduced in platform.apiLevel = '2.0'

### 19.3.6 expand

```
bb = physics.BB:expand(vec)
```

Parameter	Type	Description
self	<b>in</b> physics.BB	The input bounding box
vec	<b>in</b> physics.Vect	A vector
bb	<b>out</b> physics.BB	The bounding box <b>self</b> expanded to include vector <b>vec</b>

Returns the bounding box that contains both **self** and **vec**.

Introduced in platform.apiLevel = '2.0'

### 19.3.7 intersects

```
bool = physics.BB:intersects(other)
```

Parameter	Type	Description
self	<b>in</b> physics.BB	The input bounding box
other	<b>in</b> physics.BB	The other bounding box
bool	<b>out</b> boolean	True if <b>self</b> intersects the <b>other</b> bounding box

Determines if two bounding boxes intersect.

Introduced in platform.apiLevel = '2.0'

### 19.3.8 l

```
left = physics.BB:l()
```

Parameter	Type	Description
self	<b>in</b> physics.BB	The input bounding box
left	<b>out</b> number	The left edge of the bounding box

Returns the left edge of the bounding box.

**Introduced in platform.apiLevel = '2.0'**

### 19.3.9 merge

```
bb = physics.BB:merge(other)
```

Parameter	Type	Description
self	<b>in</b> physics.BB	The input bounding box
other	<b>in</b> physics.BB	The other bounding box
bb	<b>out</b> physics.BB	The bounding box that contains both <b>self</b> and the <b>other</b> bounding box

Returns the bounding box that contains both **self** and the **other** bounding box.

**Introduced in platform.apiLevel = '2.0'**

### 19.3.10 setb

```
self = physics.BB:setb(bottom)
```

Parameter	Type	Description
self	<b>in</b> physics.BB	The input bounding box
bottom	<b>in</b> number	The new value for the bottom edge of the bounding box
self	<b>out</b> physics.BB	The input bounding box is returned as the output

Sets the bottom edge of the bounding box to a new **value**. Returns **self**.

**Introduced in platform.apiLevel = '2.0'**

### 19.3.11 r

```
right = physics.BB:r()
```

Parameter	Type	Description
self	<b>in</b> physics.BB	The input bounding box
right	<b>out</b> number	The right edge of the bounding box

Returns the right edge of the bounding box.

Introduced in `platform.apiLevel = '2.0'`

### 19.3.12 setl

```
self = physics.BB:setl(left)
```

Parameter	Type	Description
self	<b>in</b> physics.BB	The input bounding box
left	<b>in</b> number	The new value for the left edge of the bounding box
self	<b>out</b> physics.BB	The input bounding box is returned as the output

Sets the left edge of the bounding box to a new **value**. Returns **self**.

Introduced in `platform.apiLevel = '2.0'`

### 19.3.13 setr

```
self = physics.BB:setr(right)
```

Parameter	Type	Description
self	<b>in</b> physics.BB	The input bounding box
right	<b>in</b> number	The new value for the right edge of the bounding box
self	<b>out</b> physics.BB	The input bounding box is returned as the output

Sets the right edge of the bounding box to a new **value**. Returns **self**.

Introduced in `platform.apiLevel = '2.0'`

### 19.3.14 sett

```
self = physics.BB:sett(top)
```

Parameter	Type	Description
self	<b>in</b> physics.BB	The input bounding box
top	<b>in</b> number	The new value for the top edge of the bounding box
self	<b>out</b> physics.BB	The input bounding box is returned as the output

Sets the top edge of the bounding box to a new **value**. Returns **self**.

**Introduced in platform.apiLevel = '2.0'**

### 19.3.15 t

```
top = physics.BB:t()
```

Parameter	Type	Description
self	<b>in</b> physics.BB	The input bounding box
top	<b>out</b> number	The top edge of the bounding box

Returns the top edge of the bounding box.

**Introduced in platform.apiLevel = '2.0'**

### 19.3.16 wrapVect

```
wvec = physics.BB:wrapVect(vec)
```

Parameter	Type	Description
self	<b>in</b> physics.BB	The input bounding box
vec	<b>in</b> physics.Vect	A vector
wvec	<b>out</b> physics.Vect	A vector wrapped to the bounding box

Returns a copy of **vec** wrapped to the bounding box.

**Introduced in platform.apiLevel = '2.0'**

## 19.4 Bodies

A body holds the physical properties (mass, position, rotation, velocity, etc.) of an object. It does not have a [shape](#) until you attach one (or more) to it. Its type is `TI.cpBody`.

### 19.4.1 Body

```
body = physics.Body(mass, inertia)
```

Parameter	Type	Description
mass	<b>in</b> number	Mass of the body
inertia	<b>in</b> number	The inertia of the body
body	<b>out</b> physics.Body	A new Body with the supplied mass and inertia

Returns a new Body with the given mass and moment of inertia.

Use the [provided helper functions](#) to compute the moment of inertia.

**Introduced in platform.apiLevel = '2.0'**

### 19.4.2 activate

```
self = physics.Body:activate()
```

Parameter	Type	Description
self	<b>in</b> physics.Body	The input Body
self	<b>out</b> physics.Body	The input Body is returned as the output

Activates a sleeping body.

#### Info

See <http://chipmunk-physics.net/release/Chipmunk-5.x/Chipmunk-5.3.4-Docs/> for an explanation of this routine.

**Introduced in platform.apiLevel = '2.0'**

### 19.4.3 angle

```
angle = physics.Body:angle()
```

Parameter	Type	Description
self	<b>in</b> physics.Body	The input Body
angle	<b>out</b> number	The angle of the Body in radians

Returns the angle in radians of the orientation of the body.

**Introduced in platform.apiLevel = '2.0'**

#### 19.4.4 angVel

```
avel = physics.Body:angVel()
```

Parameter	Type	Description
self	<b>in</b> physics.Body	The input Body
avel	<b>out</b> number	The angular velocity of the Body in radians per unit time

Returns the angular velocity of the body in radians per unit time.

**Introduced in platform.apiLevel = '2.0'**

#### 19.4.5 applyForce

```
self = physics.Body:applyForce(forceVect, rOffset)
```

Parameter	Type	Description
self	<b>in</b> physics.Body	The input Body
forceVect	<b>in</b> physics.Vect	A force vector
rOffset	<b>in</b> physics.Vect	Vector offset of the force relative to the Body
self	<b>out</b> physics.Body	The input Body is returned as the output

Apply force [vector](#) on **self** at a relative offset from the center of gravity.

**Introduced in platform.apiLevel = '2.0'**

#### 19.4.6 applyImpulse

```
self = physics.Body:applyImpulse(impulseVect, rOffset)
```

Parameter	Type	Description
self	<b>in</b> physics.Body	The input Body
impulseVect	<b>in</b> physics.Vect	Impulse force on the Body
rOffset	<b>in</b> physics.Vect	Vector offset of the force relative to the Body
self	<b>out</b> physics.Body	The input Body is returned as the output

Apply the impulse [vector](#) to **self** at a relative offset from the center of gravity.

**Introduced in platform.apiLevel = '2.0'**



### 19.4.7 data

```
obj = physics.Body:data()
```

Parameter	Type	Description
self	<b>in</b> physics.Body	The input Body
obj	<b>out</b> Lua object	An object previously set on the Body by the programmer

Returns the contents of the programmer data field of the Body.

**Introduced in platform.apiLevel = '2.0'**

### 19.4.8 force

```
fvec = physics.Body:force()
```

Parameter	Type	Description
self	<b>in</b> physics.Body	The input Body
fvec	<b>out</b> physics.Vect	The force vector on the Body

Returns the force [vector](#) on the body.

**Introduced in platform.apiLevel = '2.0'**

### 19.4.9 isRogue

```
bool = physics.Body:isRogue()
```

Parameter	Type	Description
self	<b>in</b> physics.Body	The input Body
bool	<b>out</b> boolean	True if the Body is a rogue Body

Returns true if the Body is a rogue Body, never having been added to the simulation [Space](#).

#### Info

See <http://chipmunk-physics.net/release/Chipmunk-5.x/Chipmunk-5.3.4-Docs/> for an explanation of rogue bodies.

**Introduced in platform.apiLevel = '2.0'**

### 19.4.10 isSleeping

```
bool = physics.Body:isSleeping()
```

Parameter	Type	Description
self	<b>in</b> physics.Body	The input Body
bool	<b>out</b> boolean	True if the Body is sleeping

Returns true if the body is sleeping.

#### Info

See <http://chipmunk-physics.net/release/Chipmunk-5.x/Chipmunk-5.3.4-Docs/> for an explanation of sleeping bodies.

Introduced in platform.apiLevel = '2.0'

### 19.4.11 local2World

```
wvec = physics.Body:local2World(lvec)
```

Parameter	Type	Description
self	<b>in</b> physics.Body	The input Body
lvec	<b>in</b> physics.Vect	A vector relative to the position of the Body
wvec	<b>out</b> physics.Vect	A vector in world coordinates

Converts **lvec** from body-relative coordinates to world coordinates. Returns the converted [vector](#).

Introduced in platform.apiLevel = '2.0'

### 19.4.12 kineticEnergy

```
ke = physics.Body:kineticEnergy()
```

Parameter	Type	Description
self	<b>in</b> physics.Body	The input Body
ke	<b>out</b> number	The total kinetic energy of the Body

Returns the kinetic energy of the body.

Introduced in platform.apiLevel = '2.0'

### 19.4.13 mass

```
m = physics.Body:mass()
```

Parameter	Type	Description
self	<b>in</b> physics.Body	The input Body
m	<b>out</b> number	The mass of the Body

Returns the mass of the body.

**Introduced in platform.apiLevel = '2.0'**

### 19.4.14 moment

```
m = physics.Body:moment()
```

Parameter	Type	Description
self	<b>in</b> physics.Body	The input Body
m	<b>out</b> number	The moment of inertia of the Body

Returns the moment of inertia of the body.

**Introduced in platform.apiLevel = '2.0'**

### 19.4.15 pos

```
p = physics.Body:pos()
```

Parameter	Type	Description
self	<b>in</b> physics.Body	The input Body
p	<b>out</b> physics.Vect	The position of the Body

Returns the [vector](#) position of the body.

**Introduced in platform.apiLevel = '2.0'**

### 19.4.16 resetForces

```
self = physics.Body:resetForces()
```

Parameter	Type	Description
self	<b>in</b> physics.Body	The input Body
self	<b>out</b> physics.Body	The input Body is returned as the output

Zero both the force and torque accumulated on **self**.

**Introduced in platform.apiLevel = '2.0'**

### 19.4.17 rot

```
rvec = physics.Body:rot()
```

Parameter	Type	Description
self	<b>in</b> physics.Body	The input Body
rvec	<b>out</b> physics.Vect	The unit vector orientation of the Body

Returns the [vector](#) orientation of the body. This is a unit vector cached from the last calculated angle of the Body.

**Introduced in platform.apiLevel = '2.0'**

### 19.4.18 setAngle

```
self = physics.Body:setAngle(angle)
```

Parameter	Type	Description
self	<b>in</b> physics.Body	The input Body
angle	<b>in</b> number	The angle of rotation in radians of the Body
self	<b>out</b> physics.Body	The input Body is returned as the output

Updates the angle of rotation in radians of the body.

Returns the Body.

**Introduced in platform.apiLevel = '2.0'**

### 19.4.19 setAngVel

```
self = physics.Body:setAngVel(vel)
```

Parameter	Type	Description
self	<b>in</b> physics.Body	The input Body
vel	<b>in</b> number	The angular velocity in radians per unit time of the Body
self	<b>out</b> physics.Body	The input Body is returned as the output

Updates the angular velocity of the body. The angular velocity is in radians per unit time.

Returns the Body.

**Introduced in platform.apiLevel = '2.0'**

### 19.4.20 setData

```
self = physics.Body:setData(value)
```

Parameter	Type	Description
self	<b>in</b> physics.Body	The input Body
value	<b>in</b> object	A programmer-supplied Lua object
self	<b>out</b> physics.Body	The input Body is returned as the output

Sets the programmer data field of the Body. The programmer can store any Lua object in this field. This is a handy place to store a reference to a simulation object.

Returns the Body.

**Introduced in platform.apiLevel = '2.0'**

### 19.4.21 setForce

```
self = physics.Body:setForce(vector)
```

Parameter	Type	Description
self	<b>in</b> physics.Body	The input Body
vector	<b>in</b> physics.Vect	The vector of force on the Body
self	<b>out</b> physics.Body	The input Body is returned as the output

Updates the force [vector](#) on the body.

Returns the Body.

**Introduced in platform.apiLevel = '2.0'**

### 19.4.22 setMass

```
self = physics.Body:setMass(mass)
```

Parameter	Type	Description
self	<b>in</b> physics.Body	The input Body
mass	<b>in</b> number	The mass of the Body
self	<b>out</b> physics.Body	The input Body is returned as the output

Updates the mass of the body.

Returns the Body.

**Introduced in platform.apiLevel = '2.0'**

### 19.4.23 setMoment

```
self = physics.Body:setMoment(moment)
```

Parameter	Type	Description
self	<b>in</b> physics.Body	The input Body
moment	<b>in</b> number	The moment of inertia of the Body
self	<b>out</b> physics.Body	The input Body is returned as the output

Updates the moment of inertia of the body.

Use the [provided helper functions](#) to compute the moment of inertia.

Returns the Body.

**Introduced in platform.apiLevel = '2.0'**

### 19.4.24 setPos

```
self = physics.Body:setPos(vector)
```

Parameter	Type	Description
self	<b>in</b> physics.Body	The input Body
vector	<b>in</b> physics.Vect	The position of the Body
self	<b>out</b> physics.Body	The input Body is returned as the output

Updates the position of the body.

Returns the Body.

**Introduced in platform.apiLevel = '2.0'**

### 19.4.25 setPositionFunc

```
self = physics.Body:setPositionFunc(func)
```

Parameter	Type	Description
self	<b>in</b> physics.Body	The input Body
func	<b>in</b> function(body, dt)	A callback function that updates the position of the Body on each time step
self	<b>out</b> physics.Body	The input Body is returned as the output

Sets the position function of the body. The position function must be a function that accepts a Body and a time step value and at some point calls `body:updatePosition` to update the position of the body.

Returns the Body.

**Introduced in platform.apiLevel = '2.0'**

### 19.4.26 setTorque

```
self = physics.Body:setTorque(torque)
```

Parameter	Type	Description
self	<b>in</b> physics.Body	The input Body
torque	<b>in</b> number	The torque of the Body
self	<b>out</b> physics.Body	The input Body is returned as the output

Updates the torque on the body. Torque is a numeric magnitude.

Returns the Body.

**Introduced in platform.apiLevel = '2.0'**

### 19.4.27 setVel

```
self = physics.Body:setVel(vector)
```

Parameter	Type	Description
self	<b>in</b> physics.Body	The input Body
vector	<b>in</b> physics.Vect	The velocity vector of the Body
self	<b>out</b> physics.Body	The input Body is returned as the output

Updates the velocity of the body.

Returns the Body.

**Introduced in platform.apiLevel = '2.0'**

### 19.4.28 setVelocityFunc

```
self = physics.Body:setVelocityFunc(func)
```

Parameter	Type	Description
self	<b>in</b> physics.Body	The input Body
func	<b>in</b> function(body, grav, damping, dt)	A callback function that updates the velocity of the Body on each time step
self	<b>out</b> physics.Body	The input Body is returned as the output

Sets the velocity function of the body. The velocity function must be a function that accepts a Body, a gravity [vector](#), a numeric damping factor, and a time step value. The function should call `body:updateVelocity` to adjust the velocity of the body.

Returns the Body.

Listing 19.2: Example for `physics.Body:setVelocityFunc()`

```
function sampleVelocityFunc(body, gravity, damping, dt)
    local pos = body:pos()
    local sqdist = pos:lengthsq()
    local g = pos:mult(-GravityStrength /
        (sqdist * math.sqrt(sqdist)))
    body:updateVelocity(g, damping, dt)
end
```

```
body:setVelocityFunc(sampleVelocityFunc)
```

Introduced in `platform.apiLevel = '2.0'`

### 19.4.29 setVLimit

```
self = physics.Body:setVLimit(limit)
```

Parameter	Type	Description
self	<b>in</b> physics.Body	The input Body
limit	<b>in</b> number	The maximum speed of the Body
self	<b>out</b> physics.Body	The input Body is returned as the output

Sets the limit for the maximum speed of the body.

Returns the Body.

Introduced in `platform.apiLevel = '2.0'`



### 19.4.30 setWLimit

```
self = physics.Body:setWLimit(limit)
```

Parameter	Type	Description
self	<b>in</b> physics.Body	The input Body
limit	<b>in</b> number	The maximum angular velocity of the Body
self	<b>out</b> physics.Body	The input Body is returned as the output

Updates the limit of the angular velocity of the body. Angular velocity is in radians per unit time.

Returns the Body.

**Introduced in platform.apiLevel = '2.0'**

### 19.4.31 sleep

```
self = physics.Body:sleep()
```

Parameter	Type	Description
self	<b>in</b> physics.Body	The input Body
self	<b>out</b> physics.Body	The input Body is returned as the output

Puts the body to sleep.

#### Info

See <http://chipmunk-physics.net/release/Chipmunk-5.x/Chipmunk-5.3.4-Docs/> for an explanation of sleeping bodies.

#### Note

The body must be added to a [Space](#) before it can be put to sleep.

Calling this function within a query or callback is not allowed.

**Introduced in platform.apiLevel = '2.0'**

### 19.4.32 sleepWithGroup

```
self = physics.Body:sleepWithGroup( [group] )
```

Parameter	Type	Description
self	<b>in</b> physics.Body	The input Body
group	<b>in</b> physics.Body	A sleeping body. If this parameter is not supplied, a new group is created
self	<b>out</b> physics.Body	The input Body is returned as the output

Puts the Body to sleep and adds it to a group of other sleeping bodies.

#### Info

See <http://chipmunk-physics.net/release/Chipmunk-5.x/Chipmunk-5.3.4-Docs/> for an explanation of this routine.

#### Note

The body must be added to a [Space](#) before it can be put to sleep.

Calling this function within a query or callback is not allowed.

This routine will raise an exception if **group** is not sleeping.

**Introduced in platform.apiLevel = '2.0'**

### 19.4.33 torque

```
t = physics.Body:torque()
```

Parameter	Type	Description
self	<b>in</b> physics.Body	The input Body
torque	<b>out</b> number	The torque on the Body

Returns the torque on the body.

**Introduced in platform.apiLevel = '2.0'**

### 19.4.34 updatePosition

```
physics.Body:updatePosition(dt)
```

Parameter	Type	Description
self	<b>in</b> physics.Body	The input Body
dt	<b>in</b> number	The time interval in seconds

Updates the position of the body using Euler integration.

#### Info

See <http://chipmunk-physics.net/release/Chipmunk-5.x/Chipmunk-5.3.4-Docs/> for an explanation of this routine.

Introduced in `platform.apiLevel = '2.0'`

### 19.4.35 updateVelocity

```
physics.Body:updateVelocity(grav, damp, dt)
```

Parameter	Type	Description
self	<b>in</b> physics.Body	The input Body
grav	<b>in</b> physics.Vect	The force of gravity
damp	<b>in</b> physics.Vect	The damping factor
dt	<b>in</b> physics.Vect	The time interval in seconds

Updates the velocity of the body using Euler integration.

#### Info

See <http://chipmunk-physics.net/release/Chipmunk-5.x/Chipmunk-5.3.4-Docs/> for an explanation of this routine.

Introduced in `platform.apiLevel = '2.0'`

### 19.4.36 vel

```
vvel = physics.Body:vel()
```

Parameter	Type	Description
self	<b>in</b> physics.Body	The input Body
vvel	<b>out</b> physics.Vect	The velocity of the Body

Returns the [vector](#) velocity of the body.

Introduced in `platform.apiLevel = '2.0'`

### 19.4.37 vLimit

```
vmax = physics.Body:vLimit()
```

Parameter	Type	Description
self	<b>in</b> physics.Body	The input Body
vmax	<b>out</b> number	The maximum speed of the Body

Returns the speed limit of the body.

Introduced in platform.apiLevel = '2.0'

### 19.4.38 wLimit

```
wmax = physics.Body:wLimit()
```

Parameter	Type	Description
self	<b>in</b> physics.Body	The input Body
wmax	<b>out</b> number	The maximum angular velocity of the Body in radians per unit time

Returns the angular velocity limit of the body. The angular velocity is in radians per unit time.

Introduced in platform.apiLevel = '2.0'

### 19.4.39 world2Local

```
lvec = physics.Body:world2Local(wvec)
```

Parameter	Type	Description
self	<b>in</b> physics.Body	The input Body
wvec	<b>in</b> physics.Vect	A vector in world coordinates
lvec	<b>out</b> physics.Vect	A vector relative to the position of the Body

Converts **wvec** from world coordinates to body-relative coordinates. Returns the converted [vector](#).

Introduced in platform.apiLevel = '2.0'

## 19.5 Shapes

Shapes contain the surface properties of an object such as how much friction or elasticity it has. All collision shapes implement the following accessor routines.

### 19.5.1 BB

```
bb = physics.Shape:BB()
```

Parameter	Type	Description
self	<b>in</b> physics.Shape	The input Shape
bb	<b>out</b> physics.BB	Bounding box of the Shape

Returns the [bounding box](#) of the shape.

**Introduced in platform.apiLevel = '2.0'**

### 19.5.2 body

```
body = physics.Shape:body()
```

Parameter	Type	Description
self	<b>in</b> physics.Shape	The input Shape
body	<b>out</b> physics.Body	The Body associated with the Shape

Returns the [body](#) attached to the shape. If the shape is static, then it will return nil.

**Introduced in platform.apiLevel = '2.0'**

### 19.5.3 collisionType

```
coll = physics.Shape:collisionType()
```

Parameter	Type	Description
self	<b>in</b> physics.Shape	The input Shape
coll	<b>out</b> number	The programmer-assigned integer collision type

Returns the integer collision type of the Shape.

**Introduced in platform.apiLevel = '2.0'**

#### 19.5.4 data

```
obj = physics.Shape:data()
```

Parameter	Type	Description
self	<b>in</b> physics.Shape	The input Shape
obj	<b>out</b> Lua object	The programmer-assigned data object assigned to this Shape

Returns the contents of the programmer data field of the Shape.

**Introduced in platform.apiLevel = '2.0'**

#### 19.5.5 friction

```
f = physics.Shape:friction()
```

Parameter	Type	Description
self	<b>in</b> physics.Shape	The input Shape
f	<b>out</b> number	The coefficient of friction for this Shape

Returns the friction coefficient of the shape.

**Introduced in platform.apiLevel = '2.0'**

#### 19.5.6 group

```
g = physics.Shape:group()
```

Parameter	Type	Description
self	<b>in</b> physics.Shape	The input Shape
g	<b>out</b> number	The assigned group number

Returns the group number of the shape.

#### Note

The group number is converted to a positive whole number when stored.

**Introduced in platform.apiLevel = '2.0'**

### 19.5.7 layers

```
layers = physics.Shape:layers()
```

Parameter	Type	Description
self	<b>in</b> physics.Shape	The input Shape
layers	<b>out</b> number	A bitmap of the layers this shape occupies

Returns the bitmap of layers the shape occupies.

Introduced in `platform.apiLevel = '2.0'`

### 19.5.8 rawBB

```
bb = physics.Shape:rawBB()
```

Parameter	Type	Description
self	<b>in</b> physics.Shape	The input Shape
bb	<b>out</b> physics.BB	The bounding box of the Shape

Returns the [bounding box](#) of the shape. Only valid after a call to [physics.Shape:BB\(\)](#) or [physics.Space:step\(\)](#).

Introduced in `platform.apiLevel = '2.0'`

### 19.5.9 restitution

```
r = physics.Shape:restitution()
```

Parameter	Type	Description
self	<b>in</b> physics.Shape	The input Shape
r	<b>out</b> number	The restitution of the Shape

Returns the restitution (or elasticity) of the shape.

Introduced in `platform.apiLevel = '2.0'`

### 19.5.10 sensor

```
s = physics.Shape:sensor()
```

Parameter	Type	Description
self	<b>in</b> physics.Shape	The input Shape
s	<b>out</b> boolean	True if the Shape is a sensor

Returns true if the shape is a sensor.

**Introduced in platform.apiLevel = '2.0'**

### 19.5.11 setCollisionType

```
self = physics.Shape:setCollisionType(collisionType)
```

Parameter	Type	Description
self	<b>in</b> physics.Shape	The input Shape
collisionType	<b>in</b> number	Programmer-defined type of collision
self	<b>out</b> physics.Shape	The input Shape is returned as the output

Assigns a collision type (an integer value of your choosing) to the shape. It is used to determine which handler to call when a collision occurs. Returns **self**.

**Introduced in platform.apiLevel = '2.0'**

### 19.5.12 setData

```
self = physics.Shape:setData(obj)
```

Parameter	Type	Description
self	<b>in</b> physics.Shape	The input Shape
obj	<b>in</b> Lua object	An object defined by the programmer
self	<b>out</b> physics.Shape	The input Shape is returned as the output

Sets the programmer data field of the Shape. The programmer can store any Lua object in this field. Returns **self**.

**Introduced in platform.apiLevel = '2.0'**



### 19.5.13 setFriction

```
self = physics.Shape:setFriction(f)
```

Parameter	Type	Description
self	<b>in</b> physics.Shape	The input Shape
f	<b>in</b> number	Coefficient of friction for the surface of the Shape
self	<b>out</b> physics.Shape	The input Shape is returned as the output

Sets the friction coefficient for the shape. Returns **self**.

#### Note

May not behave as expected for f larger than 1.0 or less than 0.

**Introduced in platform.apiLevel = '2.0'**

### 19.5.14 setGroup

```
self = physics.Shape:setGroup(group)
```

Parameter	Type	Description
self	<b>in</b> physics.Shape	The input Shape
group	<b>in</b> number	Group number
self	<b>out</b> physics.Shape	The input Shape is returned as the output

Sets the group (a number defined by the programmer) of the shape. Shapes in the same group do not generate collisions. Returns **self**.

#### Note

The group number is converted to a positive whole number when stored.

**Introduced in platform.apiLevel = '2.0'**

### 19.5.15 setLayers

```
self = physics.Shape:setLayers(layers)
```

Parameter	Type	Description
self	<b>in</b> physics.Shape	The input Shape
layers	<b>in</b> number	A bitmap of integer layer numbers. This implementation permits 32 layers
self	<b>out</b> physics.Shape	The input Shape is returned as the output

Sets the layers that the shape inhabits. Shapes only collide if they are in the same layer. **layers** is an integer bitmap of all the layers that the shape occupies. Returns **self**.

**Introduced in platform.apiLevel = '2.0'**

### 19.5.16 setRestitution

```
self = physics.Shape:setRestitution(r)
```

Parameter	Type	Description
self	<b>in</b> physics.Shape	The input Shape
r	<b>in</b> number	The new value for the shape's restitution
self	<b>out</b> physics.Shape	The input Shape is returned as the output

Sets the restitution (or elasticity) of the shape. A value of 0.0 gives no bounce and a value of 1.0 gives a perfect bounce. Returns **self**.

#### Note

May not behave as expected for r larger than 1.0 or less than 0.

**Introduced in platform.apiLevel = '2.0'**

### 19.5.17 setSensor

```
self = physics.Shape:setSensor(bool)
```

Parameter	Type	Description
self	<b>in</b> physics.Shape	The input Shape
bool	<b>in</b> boolean	True if the shape is a sensor
self	<b>out</b> physics.Shape	The input Shape is returned as the output

Determines if the shape is a sensor (true) or not (false). Sensors call [collision handlers](#) but do not generate collisions. Returns **self**.

**Introduced in platform.apiLevel = '2.0'**

### 19.5.18 setSurfaceV

```
self = physics.Shape:setSurfaceV(vel)
```

Parameter	Type	Description
self	<b>in</b> physics.Shape	The input Shape
vel	<b>in</b> physics.Vect	The new vector for the surface velocity
self	<b>out</b> physics.Shape	The input Shape is returned as the output

Sets the surface velocity of the shape. Returns **self**.

**Introduced in platform.apiLevel = '2.0'**

### 19.5.19 surfaceV

```
sv = physics.Shape:surfaceV()
```

Parameter	Type	Description
self	<b>in</b> physics.Shape	The input Shape
sv	<b>out</b> physics.Vect	The surface velocity of the Shape

Returns the surface velocity **vector** of the shape.

**Introduced in platform.apiLevel = '2.0'**

## 19.6 Circle Shapes

A CircleShape is a subclass of [Shape](#). Its type is `TL.cpCircleShape`.

### 19.6.1 CircleShape

```
cs = physics.CircleShape(body, radius, offset)
```

Parameter	Type	Description
body	<b>in</b> physics.Body	A Body or nil
radius	<b>in</b> number	The radius of the circle
offset	<b>in</b> physics.Vect	The offset of the circle from the Body
cs	<b>out</b> physics.CircleShape	A new CircleShape

Returns a new CircleShape with the given **body**, radius, and offset **vector** from the body's center of gravity in body-local coordinates. Specify nil for the body to use the space's static body.

**Introduced in platform.apiLevel = '2.0'**

## 19.6.2 offset

```
ovec = physics.CircleShape:offset()
```

Parameter	Type	Description
self	<b>in</b> physics.CircleShape	The input CircleShape
ovec	<b>out</b> physics.Vect	The offset of the shape from the Body

Returns the offset [vector](#) of the shape from the [body](#)'s center of gravity.

**Introduced in platform.apiLevel = '2.0'**

## 19.6.3 radius

```
r = physics.CircleShape:radius()
```

Parameter	Type	Description
self	<b>in</b> physics.CircleShape	The input CircleShape
r	<b>out</b> number	The radius of the shape

Returns the radius of the shape.

**Introduced in platform.apiLevel = '2.0'**

## 19.7 Polygon Shapes

Polygon shapes are bounded by a set of line segments. The enclosed area of the polygon must be convex and the vertices must be defined in counterclockwise order. Polygon shapes are of type `TI.cpPolyShape`.

### 19.7.1 PolyShape

```
ps = physics.PolyShape(body, vertices, offset)
```

Parameter	Type	Description
body	<b>in</b> physics.Body	A Body or nil
vertices	<b>in</b> {physics.Vect}	The list of vertices that define the boundaries of the polygon defined in counterclockwise order
offset	<b>in</b> physics.Vect	The offset of the PolyShape from the Body
ps	<b>out</b> physics.PolyShape	A new PolyShape

Returns a new PolyShape with the given [body](#), table of vertices, and offset from the body's center of gravity. Specify nil for the body to use the space's static body.

**Introduced in platform.apiLevel = '2.0'**

### 19.7.2 numVerts

```
nv = physics.PolyShape:numVerts()
```

Parameter	Type	Description
self	<b>in</b> physics.PolyShape	The input PolyShape
nv	<b>out</b> number	The number of vertices in the PolyShape

Returns the number of vertices in the table of polygon vertices.

**Introduced in platform.apiLevel = '2.0'**

### 19.7.3 points

```
points = physics.PolyShape:points()
```

Parameter	Type	Description
self	<b>in</b> physics.PolyShape	The input PolyShape
points	<b>out</b> {physics.Vect}	A table of vertices that define the boundary of the polygon. The vertices are translated to the polygon's current world coordinates

Returns a copy of the table of vertices defining the bounds of the polygon. The vertices are translated to the polygon's current world coordinates.

#### Note

When a PolyShape has not been added to a Space, it has no world coordinates. In this case, each vertex returned by physics.PolyShape:points() will have x and y equal to 0.

**Introduced in platform.apiLevel = '2.0'**

## 19.7.4 vert

```
v = physics.PolyShape:vert(n)
```

Parameter	Type	Description
self	<b>in</b> physics.PolyShape	The input PolyShape
n	<b>in</b> number	Index of requested vertex inside the table of vertexes describing the polygon
v	<b>out</b> physics.Vect	The nth vertex of the polygon. The coordinates of the vector are relative to the shape's Body

Returns vertex number **n** of the table of vertices defining the bounds of the polygon. If the shape is static, then the vertex values are in world coordinates, otherwise the vertex coordinates are relative to the shape's [body](#). Returns nil if **n** is less than 1 or greater than the number of vertices in the polygon.

**Introduced in platform.apiLevel = '2.0'**

## 19.8 Segment Shapes

A segment shape is defined by two end points and a radius. Its type is `TI.cpSegmentShape`.

### 19.8.1 SegmentShape

```
ss = physics.SegmentShape(body, a, b, radius)
```

Parameter	Type	Description
body	<b>in</b> <code>physics.Body</code>	A <code>Body</code> or <code>nil</code>
a	<b>in</b> <code>physics.Vect</code>	The first end point of the segment. The end point is in coordinates relative to the <code>Body</code>
b	<b>in</b> <code>physics.Vect</code>	The second end point of the segment relative to the <code>Body</code>
radius	<b>in</b> <code>number</code>	The distance of the border of the segment from the line between the end points of the segment
ss	<b>out</b> <code>physics.SegmentShape</code>	A new <code>SegmentShape</code>

Returns a new `SegmentShape` with end point vectors **a** and **b**. **radius** defines the thickness of the segment.

Introduced in `platform.apiLevel = '2.0'`

### 19.8.2 a

```
avec = physics.SegmentShape:a()
```

Parameter	Type	Description
self	<b>in</b> <code>physics.SegmentShape</code>	The input <code>SegmentShape</code>
avec	<b>out</b> <code>physics.Vect</code>	The first end point of the segment

Returns the **a** [vector](#) defining one of the end points of the segment.

Introduced in `platform.apiLevel = '2.0'`

### 19.8.3 b

```
bvec = physics.SegmentShape:b()
```

Parameter	Type	Description
self	<b>in</b> physics.SegmentShape	The input SegmentShape
bvec	<b>out</b> physics.Vect	The second end point of the segment

Returns the **b vector** defining one of the end points of the segment.

**Introduced in platform.apiLevel = '2.0'**

### 19.8.4 normal

```
nvec = physics.SegmentShape:normal()
```

Parameter	Type	Description
self	<b>in</b> physics.SegmentShape	The input SegmentShape
nvec	<b>out</b> physics.Vect	The unit normal vector of the segment

Returns the computed **unit normal vector** to the segment.

**Introduced in platform.apiLevel = '2.0'**

### 19.8.5 radius

```
r = physics.SegmentShape:radius()
```

Parameter	Type	Description
self	<b>in</b> physics.SegmentShape	The input SegmentShape
r	<b>out</b> number	The radius of the segment

Returns the radius of the segment.

**Introduced in platform.apiLevel = '2.0'**

## 19.9 Spaces

A physics Space is the basic unit of simulation.



## 19.9.1 Space

```
s = physics.Space()
```

Parameter	Type	Description
s	<b>out</b> physics.Space	A new simulation Space

Returns a new physics simulation Space.

Introduced in `platform.apiLevel = '2.0'`

## 19.9.2 addBody

```
self = physics.Space:addBody(body)
```

Parameter	Type	Description
self	<b>in</b> physics.Space	The input simulation Space
body	<b>in</b> physics.Body	Adds the Body to the simulation Space
self	<b>out</b> physics.Space	The input Space is returned as the output

Adds a [Body](#) to the Space. Returns **self**.

Introduced in `platform.apiLevel = '2.0'`

## 19.9.3 addConstraint

```
self = physics.Space:addConstraint(constraint)
```

Parameter	Type	Description
self	<b>in</b> physics.Space	The input simulation Space
constraint	<b>in</b> physics.Constraint	Adds a Constraint to the simulation Space
self	<b>out</b> physics.Space	The input Space is returned as the output

Adds a [Constraint](#) to the Space. Returns **self**.

Introduced in `platform.apiLevel = '2.0'`

## 19.9.4 addCollisionHandler

```
self = physics.Space:addCollisionHandler(collisionTypeA,  
                                         collisionTypeB, callbacksTable)
```

Parameter	Type	Description
self	<b>in</b> physics.Space	The input simulation Space
collisionTypeA	<b>in</b> number	Type of first <a href="#">collision</a>
collisionTypeB	<b>in</b> number	Type of second <a href="#">collision</a>
callbacksTable	<b>in</b> table of functions	A table of functions to call during collision detection and handling
self	<b>out</b> physics.Space	The input Space is returned as the output

Registers a table of callback functions to handle collisions between [shapes](#) of [collisionTypeA](#) and [shapes](#) of [collisionTypeB](#). [Listing 19.3](#) shows the form of the [callbacksTable](#).

Listing 19.3: The Form of the Callback Table for `physics.Space:addCollisionHandler()`

```
{  
  begin = function(arbiter, space, callbacksTable) ... end,  
  preSolve = function(arbiter, space, callbacksTable) ... end,  
  postSolve = function(arbiter, space, callbacksTable) ... end,  
  separate = function(arbiter, space, callbacksTable) ... end  
}
```

If the **begin** handler or **preSolve** handler return false, further collision calculations are bypassed. If they return true, the collision processing proceeds as normal.

It is not necessary to provide handlers for all callback table entries. Default handling will be provided for unspecified handlers.

Returns **self**.

See <http://chipmunk-physics.net/release/Chipmunk-5.x/Chipmunk-5.3.4-Docs/> for an explanation of collision processing and collision handler callbacks.

One important point to note is that these callback handlers must not add or remove [Bodies](#), [Shapes](#), or [Constraints](#) from the Space.

See the [post-step callback functions](#) for the right way to remove (or add) objects as the result of a collision.

Introduced in `platform.apiLevel = '2.0'`

### 19.9.5 addPostStepCallback

```
self = physics.Space:addPostStepCallback(body|shape|constraint,  
                                          function(space, object)  
                                          ... end )
```

Parameter	Type	Description
self	<b>in</b> physics.Space	The input simulation Space
body or shape or constraint	<b>in</b> physics.Body or physics.Shape or physics.Constraint	A simulation object that will receive attention after the simulation step
function	<b>in</b> function(space, object)	The callback function to run against the simula- tion object at the end of the simulation step
self	<b>out</b> physics.Space	The input Space is returned as the output

Adds a callback function to be called when the current [step](#) is finished. One callback may be registered per [Body](#), [Shape](#), or [Constraint](#). Only the first callback for a given object is registered. Any attempt to register another callback for the same object is ignored.

Returns **self**.

Introduced in `platform.apiLevel = '2.0'`

### 19.9.6 addShape

```
self = physics.Space:addShape(shape)
```

Parameter	Type	Description
self	<b>in</b> physics.Space	The input simulation Space
shape	<b>in</b> physics.Shape	Adds the Shape to the simulation Space
self	<b>out</b> physics.Space	The input Space is returned as the output

Adds a [Shape](#) to the Space. Returns **self**.

Introduced in `platform.apiLevel = '2.0'`

### 19.9.7 addStaticShape

```
self = physics.Space:addStaticShape(staticShape)
```

Parameter	Type	Description
self	<b>in</b> physics.Space	The input simulation Space
staticShape	<b>in</b> physics.Shape	Adds the static Shape to the simulation Space
self	<b>out</b> physics.Space	The input Space is returned as the output

Adds a static Shape to the Space. Returns **self**.

Introduced in `platform.apiLevel = '2.0'`

### 19.9.8 damping

```
d = physics.Space:damping()
```

Parameter	Type	Description
self	<b>in</b> physics.Space	The input simulation Space
d	<b>out</b> number	The amount of damping of the simulation Space

Introduced in `platform.apiLevel = '2.0'`

### 19.9.9 data

```
obj = physics.Space:data()
```

Parameter	Type	Description
self	<b>in</b> physics.Space	The input simulation Space
obj	<b>out</b> Lua object	The object associated with the Space
self	<b>out</b> physics.Space	The input Space is returned as the output

Introduced in `platform.apiLevel = '2.0'`

### 19.9.10 elasticIterations

```
iters = physics.Space:elasticIterations()
```

Parameter	Type	Description
self	<b>in</b> physics.Space	The input simulation Space
iters	<b>out</b> number	The number of iterations to use in the impulse solver to solve elastic collisions

Introduced in `platform.apiLevel = '2.0'`

### 19.9.11 gravity

```
grav = physics.Space.gravity()
```

Parameter	Type	Description
self	<b>in</b> physics.Space	The input simulation Space
grav	<b>out</b> physics.Vect	The gravity force vector applied to all Bodies in the simulation Space.

Introduced in platform.apiLevel = '2.0'

### 19.9.12 idleSpeedThreshold

```
speed = physics.Space.idleSpeedThreshold()
```

Parameter	Type	Description
self	<b>in</b> physics.Space	The input simulation Space
speed	<b>out</b> number	Threshold speed

Introduced in platform.apiLevel = '2.0'

### 19.9.13 iterations

```
iters = physics.Space.iterations()
```

Parameter	Type	Description
self	<b>in</b> physics.Space	The input simulation Space
iters	<b>out</b> number	The number of iterations the solver takes to update one step of the simulation

Introduced in platform.apiLevel = '2.0'

### 19.9.14 rehashShape

```
self = physics.Space:rehashShape(shape)
```

Parameter	Type	Description
self	<b>in</b> physics.Space	The input simulation Space
shape	<b>in</b> shape	The shape to rehash
self	<b>out</b> physics.Space	The input Space is returned as the output

Update an individual [static shape](#) that has moved.

Returns **self**.

Introduced in `platform.apiLevel = '2.0'`

### 19.9.15 rehashStatic

```
self = physics.Space:rehashStatic()
```

Parameter	Type	Description
self	<b>in</b> physics.Space	The input simulation Space
self	<b>out</b> physics.Space	The input Space is returned as the output

Rehashes the shapes in the static spatial hash. You must call this if you move any [static shapes](#) or Chipmunk will not update their collision detection data.

Returns **self**.

Introduced in `platform.apiLevel = '2.0'`

### 19.9.16 removeBody

```
self = physics.Space:removeBody(body)
```

Parameter	Type	Description
self	<b>in</b> physics.Space	The input simulation Space
body	<b>in</b> physics.Body	A Body to remove from the simulation Space
self	<b>out</b> physics.Space	The input Space is returned as the output

Removes a [Body](#) from the Space. Returns **self**.

Introduced in `platform.apiLevel = '2.0'`

### 19.9.17 removeConstraint

```
self = physics.Space.removeConstraint(constraint)
```

Parameter	Type	Description
self	<b>in</b> physics.Space	The input simulation Space
constraint	<b>in</b> physics.Constraint	A Constraint to remove from the simulation Space
self	<b>out</b> physics.Space	The input Space is returned as the output

Removes a [Constraint](#) from the Space. Returns **self**.

**Introduced in platform.apiLevel = '2.0'**

### 19.9.18 removeShape

```
self = physics.Space.removeShape(shape)
```

Parameter	Type	Description
self	<b>in</b> physics.Space	The input simulation Space
shape	<b>in</b> physics.Shape	A Shape to remove from the simulation Space
self	<b>out</b> physics.Space	The input Space is returned as the output

Removes a [Shape](#) from the Space. Returns **self**.

**Introduced in platform.apiLevel = '2.0'**

### 19.9.19 removeStaticShape

```
physics.Space.removeStaticShape(staticShape)
```

Parameter	Type	Description
self	<b>in</b> physics.Space	The input simulation Space
staticShape	<b>in</b> physics.Shape	A static Shape to remove from the simulation Space
self	<b>out</b> physics.Space	The input Space is returned as the output

Removes a [static Shape](#) from the Space. Returns **self**.

**Introduced in platform.apiLevel = '2.0'**

### 19.9.20 `resizeActiveHash`

```
self = physics.Space:resizeActiveHash(dim, count)
```

Parameter	Type	Description
self	<b>in</b> physics.Space	The input simulation Space
dim	<b>in</b> number	The length of one side of a hash cell. Default is 100
count	<b>in</b> number	The number of cells in the hash table. Default is 1000
self	<b>out</b> physics.Space	The input Space is returned as the output

The spatial hash of active [Shapes](#) can be tuned to improve collision detection. **dim** establishes the size of a hash cell (default 100), and **count** sets the number of hash cells (default 1000). **dim** should approximate the side length of a typical Shape. A good rule of thumb is to set **count** to about ten times the number of [Shapes](#) in the space.

**Introduced in `platform.apiLevel = '2.0'`**

### 19.9.21 `resizeStaticHash`

```
self = physics.Space:resizeStaticHash(dim, count)
```

Parameter	Type	Description
self	<b>in</b> physics.Space	The input simulation Space
dim	<b>in</b> number	The length of one side of a hash cell. Default is 100
count	<b>in</b> number	The number of cells in the hash table. Default is 1000
self	<b>out</b> physics.Space	The input Space is returned as the output

This routine configures the spatial hash of static Shapes. Configure this similarly to `resizeActiveHash` but for [static Shapes](#).

**Introduced in `platform.apiLevel = '2.0'`**



### 19.9.22 setDamping

Damping drains speed from bodies in the simulation. A value of 0.9 means that each **body** will lose 10% of its speed per second. Defaults to 1. This value can be overridden on a per body basis.

```
self = physics.Space:setDamping(d)
```

Parameter	Type	Description
self	<b>in</b> physics.Space	The input simulation Space
d	<b>in</b> number	The new amount of damping for the simulation Space
self	<b>out</b> physics.Space	The input Space is returned as the output

Amount of viscous damping to apply to the Space.

#### Note

May not behave as expected for d larger than 1.0 or less than 0.

Introduced in `platform.apiLevel = '2.0'`

### 19.9.23 setData

```
self = physics.Space:setData(obj)
```

Parameter	Type	Description
self	<b>in</b> physics.Space	The input simulation Space
obj	<b>in</b> Lua object	The data object to be set
self	<b>out</b> physics.Space	The input Space is returned as the output

The programmer can store any Lua object in this field.

Introduced in `platform.apiLevel = '2.0'`

### 19.9.24 setElasticIterations

```
self = physics.Space:setElasticIterations(iters)
```

Parameter	Type	Description
self	<b>in</b> physics.Space	The input simulation Space
iters	<b>in</b> number	The number of iterations to use in the impulse solver to solve elastic collisions. Defaults to 0
self	<b>out</b> physics.Space	The input Space is returned as the output

Introduced in `platform.apiLevel = '2.0'`

### 19.9.25 setGravity

```
self = physics.Space:setGravity(grav)
```

Parameter	Type	Description
self	<b>in</b> physics.Space	The input simulation Space
grav	<b>in</b> physics.Vect	The gravity force vector applied to all Bodies in the simulation Space. Defaults to physics.Vect(0, 0)
self	<b>out</b> physics.Space	The input Space is returned as the output

Global gravity applied to the Space. Can be overridden on a per [body](#) basis by writing custom integration functions.

**Introduced in platform.apiLevel = ‘2.0’**

### 19.9.26 setIdleSpeedThreshold

```
self = physics.Space:setIdleSpeedThreshold(speed)
```

Parameter	Type	Description
self	<b>in</b> physics.Space	The input simulation Space
speed	<b>in</b> number	Threshold speed
self	<b>out</b> physics.Space	The input Space is returned as the output

The idleSpeedThreshold is the speed below which a [body](#) is considered to be idle. This value is used to determine when a body can be put to sleep.

**Introduced in platform.apiLevel = ‘2.0’**

### 19.9.27 setIterations

```
self = physics.Space:setIterations(iters)
```

Parameter	Type	Description
self	<b>in</b> physics.Space	The input simulation Space
iters	<b>in</b> number	Number of iterations to refine the accuracy of the solver. Default is 10
self	<b>out</b> physics.Space	The input Space is returned as the output

This value allows the programmer to control the accuracy of the solver. Default is 10.

**Introduced in platform.apiLevel = ‘2.0’**

### 19.9.28 setSleepTimeThreshold

```
self = physics.Space:setSleepTimeThreshold(sleep)
```

Parameter	Type	Description
self	<b>in</b> physics.Space	The input simulation Space
sleep	<b>in</b> number	The amount of time (seconds) below which time if a Shape has not moved, it is put to sleep
self	<b>out</b> physics.Space	The input Space is returned as the output

Sleep time threshold is used to calculate when a [Body](#) can be put to sleep.

**Introduced in platform.apiLevel = '2.0'**

### 19.9.29 sleepTimeThreshold

```
sleep = physics.Space:sleepTimeThreshold()
```

Parameter	Type	Description
self	<b>in</b> physics.Space	The input simulation Space
sleep	<b>out</b> number	The threshold time used to determine when a Shape can be put to sleep

**Introduced in platform.apiLevel = '2.0'**

### 19.9.30 step

```
self = physics.Space:step(dt)
```

Parameter	Type	Description
self	<b>in</b> physics.Space	The input simulation Space
dt	<b>in</b> number	The length of time (seconds) of one step of the simulation
self	<b>out</b> physics.Space	The input Space is returned as the output

Updates the Space for the given time step **dt**. A fixed time step is recommended and increases the efficiency of the contact persistence, requiring an order of magnitude fewer iterations and lower CPU usage.

Returns **self**.

Introduced in `platform.apiLevel = '2.0'`

## 19.10 Constraints

All Constraints share common accessors.

Accessors	Type	Description
bodyA	physics.Body	The first Body that the Constraint acts on
bodyB	physics.Body	The second Body that the Constraint acts on
setBiasCoef, biasCoef	number	The fraction of error corrected each step of the simulation. Defaults to 0.1. May not behave as expected for numbers larger than 1.0 or less than 0.
setData, data	Lua object	A programmer-defined object
impulse	number	Calculated impulse applied by the Constraint in the last simulation step. To convert this to the magnitude of the force, divide by the time step passed to <code>physics.Space:step()</code>
setMaxBias, maxBias	number	Maximum speed the Constraint can apply error correction. Defaults to INFINITY
setMaxForce, maxForce	number	Magnitude of maximum force the Constraint can use to act on the two Bodies. Defaults to INFINITY

### 19.10.1 Damped Rotary Spring

```
spring = physics.DampedRotarySpring(a, b, restAngle,  
                                     stiffness, damping)
```

Parameter	Type	Description
a	<b>in</b> physics.Body	First Body
b	<b>in</b> physics.Body	Second Body
restAngle	<b>in</b> number	Relative angle in radians that the Bodies want to maintain
stiffness	<b>in</b> number	The spring constant
damping	<b>in</b> number	How soft to make the damping of the spring
spring	<b>out</b> physics.DampedRotarySpring	New DampedRotarySpring

Like a damped spring, but works in an angular fashion. **restAngle** is the relative angle in radians that the Bodies want to have, **stiffness** and **damping** work basically the same as on a [damped spring](#).

Accessors	Type
setRestAngle, restAngle	number
setStiffness, stiffness	number
setDamping, damping	number

Introduced in `platform.apiLevel = '2.0'`

## 19.10.2 Damped Spring

```
spring = physics.DampedSpring(a, b, anchr1, anchr2, restLength,  
                               stiffness, damping)
```

Parameter	Type	Description
a	in physics.Body	First Body
b	in physics.Body	Second Body
anchr1	in physics.Vect	Anchor point to first Body
anchr2	in physics.Vect	Anchor point to second Body
restLength	in number	The distance the spring wants to maintain between its Bodies
stiffness	in number	The spring constant
damping	in number	How soft to make the damping of the spring
spring	out physics.DampedSpring	New DampedSpring

Defined much like a [SlideJoint](#). **restLength** is the distance the spring wants to be, **stiffness** is the spring constant, and **damping** is how soft to make the damping of the spring.

Accessors	Type
setAnchr1, anchr1	physics.Vect
setAnchr2, anchr2	physics.Vect
setRestLength, restLength	number
setStiffness, stiffness	number
setDamping, damping	number

Introduced in `platform.apiLevel = '2.0'`

### 19.10.3 Gear Joint

```
joint = physics.GearJoint(a, b, phase, ratio)
```

Parameter	Type	Description
a	in physics.Body	First Body
b	in physics.Body	Second Body
phase	in number	The initial angular offset in radians of the two Bodies
ratio	in number	Ratio of velocities between the two Bodies
joint	out physics.GearJoint	New GearJoint

Keeps the angular velocity ratio of a pair of Bodies constant. **ratio** is always measured in absolute terms. **phase** is the initial angular offset of the two **bodies**.

Accessors	Type
setPhase, phase	number
setRatio, ratio	number

Introduced in platform.apiLevel = '2.0'

### 19.10.4 Groove Joint

```
joint = physics.GrooveJoint(a, b, grooveA, grooveB, anchr2)
```

Parameter	Type	Description
a	in physics.Body	First Body
b	in physics.Body	Second Body
grooveA	in physics.Vect	One end point of the groove
grooveB	in physics.Vect	The other end point of the groove
anchr2	in physics.Vect	The pivot point of Body b
joint	out physics.GlooveJoint	New GlooveJoint

The groove goes from **grooveA** to **grooveB** on Body **a**, and the pivot is attached to **anchr2** on Body **b**. All coordinates are **body** local.

Accessors	Type
setAnchr2, anchr2	physics.Vect
setGrooveA, grooveA	physics.Vect
setGrooveB, grooveB	physics.Vect
grooveN	physics.Vect

Introduced in platform.apiLevel = '2.0'

### 19.10.5 Pin Joint

```
joint = physics.PinJoint(a, b, anchr1, anchr2)
```

Parameter	Type	Description
a	<b>in</b> physics.Body	First Body
b	<b>in</b> physics.Body	Second Body
anchr1	<b>in</b> physics.Vect	The anchor point on Body a
anchr2	<b>in</b> physics.Vect	The anchor point on Body b
joint	<b>out</b> physics.PinJoint	New PinJoint

**a** and **b** are the two [bodies](#) to connect, and **anchr1** and **anchr2** are the anchor points on those bodies. The distance between the two anchor points is measured when the joint is created. If you want to set a specific distance, use the setter function to override it.

Accessors	Type
setAnchr1, anchr1	physics.Vect
setAnchr2, anchr2	physics.Vect
setDist, dist	number

Introduced in `platform.apiLevel = '2.0'`

### 19.10.6 Pivot Joint

```
joint = physics.PivotJoint(a, b, pivot)
joint = physics.PivotJoint(a, b, anchr1, anchr2)
```

Parameter	Type	Description
a	<b>in</b> physics.Body	First Body
b	<b>in</b> physics.Body	Second Body
pivot	<b>in</b> physics.Vect	Point of pivot between the two Bodies
anchr1	<b>in</b> physics.Vect	The anchor point on Body a
anchr2	<b>in</b> physics.Vect	The anchor point on Body b
joint	<b>out</b> physics.PivotJoint	New PivotJoint

**a** and **b** are the two [bodies](#) to connect, and **pivot** is the point in world coordinates of the pivot. Because the pivot location is given in world coordinates, you must have the bodies moved into the correct positions already. Alternatively you can specify the joint based on a pair of anchor points, but make sure you have the bodies in the right place as the joint will fix itself as soon as you start simulating the [Space](#).

Accessors	Type
setAnchr1, anchr1	physics.Vect
setAnchr2, anchr2	physics.Vect

Introduced in `platform.apiLevel = '2.0'`



### 19.10.7 Ratchet Joint

```
joint = physics.RatchetJoint(a, b, phase, ratchet)
```

Parameter	Type	Description
a	<b>in</b> physics.Body	First Body
b	<b>in</b> physics.Body	Second Body
phase	<b>in</b> number	Initial offset in radians
ratchet	<b>in</b> number	The distance in radians between clicks of the ratchet
joint	<b>out</b> physics.RatchetJoint	New RatchetJoint

Works like a socket wrench. **ratchet** is the distance between clicks, **phase** is the initial offset to use when deciding where the ratchet angles are.

Accessors	Type
setAngle, angle	number
setPhase, phase	number
setRatchet, ratchet	number

Introduced in `platform.apiLevel = '2.0'`

### 19.10.8 Rotary Limit Joint

```
joint = physics.RotaryLimitJoint(a, b, min, max)
```

Parameter	Type	Description
a	<b>in</b> physics.Body	First Body
b	<b>in</b> physics.Body	Second Body
min	<b>in</b> number	The minimum angular distance in radians
max	<b>in</b> number	The maximum angular distance in radians
joint	<b>out</b> physics.RotaryLimitJoint	New RotaryLimitJoint

Constrains the relative rotations of two [bodies](#). **min** and **max** are the angular limits in radians. It is implemented so that it is possible for the range to be greater than a full revolution.

Accessors	Type
setMin, min	number
setMax, max	number

Introduced in `platform.apiLevel = '2.0'`

### 19.10.9 Simple Motor

```
motor = physics.SimpleMotor(a, b, rate)
```

Parameter	Type	Description
a	<b>in</b> physics.Body	First Body
b	<b>in</b> physics.Body	Second Body
rate	<b>in</b> number	The relative angular velocity
motor	<b>out</b> physics.SimpleMotor	New SimpleMotor

Keeps the relative angular velocity of a pair of **bodies** constant. **rate** is the desired relative angular velocity.

Accessors	Type
setRate, rate	number

Introduced in `platform.apiLevel = '2.0'`

### 19.10.10 Slide Joints

```
joint = physics.SlideJoint(a, b, anchr1, anchr2, min, max)
```

Parameter	Type	Description
a	<b>in</b> physics.Body	First Body
b	<b>in</b> physics.Body	Second Body
anchr1	<b>in</b> physics.Vect	The anchor point on Body a
anchr2	<b>in</b> physics.Vect	The anchor point on Body b
min	<b>in</b> number	Minimum distance between Bodies
max	<b>in</b> number	Maximum distance between Bodies
joint	<b>out</b> physics.SlideJoint	New SlideJoint

**a** and **b** are the two **bodies** to connect, **anchr1** and **anchr2** are the anchor points on those bodies, and **min** and **max** define the allowed distances of the anchor points.

Accessors	Type
setAnchr1, anchr1	physics.Vect
setAnchr2, anchr2	physics.Vect
setMin, min	number
setMax, max	number

Introduced in `platform.apiLevel = '2.0'`

## 19.11 Arbiters and Collision Pairs

The Arbiter class encapsulates information about each pair of collisions.

### 19.11.1 #

```
count = #physics.Arbiters
```

Returns the number of contact points in this Arbiters.

**Introduced in platform.apiLevel = '2.0'**

### 19.11.2 a

```
shape = physics.Arbiters.a()
```

Parameter	Type	Description
self	in physics.Arbiters	The input Arbiters
shape	out physics.Shape	The first Shape in the collision pair

Returns Shape **a** (the first [shape](#)) in a collision pair.

**Introduced in platform.apiLevel = '2.0'**

### 19.11.3 b

```
shape = physics.Arbiters.b()
```

Parameter	Type	Description
self	in physics.Arbiters	The input Arbiters
shape	out physics.Shape	The second Shape in the collision pair

Returns Shape **b** (the second [shape](#)) in a collision pair.

**Introduced in platform.apiLevel = '2.0'**

### 19.11.4 bodies

```
bodyA, bodyB = physics.Arbiters.bodies()
```

Parameter	Type	Description
self	in physics.Arbiters	The input Arbiters
bodyA	out physics.Body	The first Body in the collision pair
bodyB	out physics.Body	The second Body in the collision pair

Returns bodyA and bodyB in the collision pair.

**Introduced in platform.apiLevel = '2.0'**

### 19.11.5 depth

```
d = physics.Arbitrator:depth(i)
```

Parameter	Type	Description
self	<b>in</b> physics.Arbitrator	The input Arbitrator
i	<b>in</b> number	A contact point number
d	<b>out</b> number	The penetration depth of the ith contact point

Returns the penetration depth of the ith contact or nil if i is out of range of the number of contact points.

**Introduced in platform.apiLevel = '2.0'**

### 19.11.6 elasticity

```
e = physics.Arbitrator:elasticity()
```

Parameter	Type	Description
self	<b>in</b> physics.Arbitrator	The input Arbitrator
e	<b>out</b> number	The calculated elasticity of the collision

Returns the calculated elasticity of this collision pair.

**Introduced in platform.apiLevel = '2.0'**

### 19.11.7 friction

```
f = physics.Arbitrator:friction()
```

Parameter	Type	Description
self	<b>in</b> physics.Arbitrator	The input Arbitrator
f	<b>out</b> number	The calculated friction of the collision

Returns the calculated friction of this collision pair.

**Introduced in platform.apiLevel = '2.0'**

### 19.11.8 impulse

```
ivec = physics.Arbiters.impulse([friction])
```

Parameter	Type	Description
self	<b>in</b> physics.Arbiters	The input Arbiters
friction	<b>in</b> boolean	If true, the calculated friction is included in the calculation
ivec	<b>out</b> physics.Vect	The vector impulse applied to resolve the collision

Returns the [vector](#) impulse that was applied during this [step](#) to resolve the collision. If **friction** is true (default false), then the calculated friction is taken into account.

**Introduced in platform.apiLevel = '2.0'**

### 19.11.9 isFirstContact

```
bool = physics.Arbiters.isFirstContact()
```

Parameter	Type	Description
self	<b>in</b> physics.Arbiters	The input Arbiters
bool	<b>out</b> boolean	True if this is the first step that the Shapes touched

Returns true if this is the first [step](#) that the [Shapes](#) touched. This information only persists until a step when the shapes are no longer touching. Once they are no longer touching, this flag is reset.

**Introduced in platform.apiLevel = '2.0'**

### 19.11.10 normal

```
nvec = physics.Arbiters.normal(i)
```

Parameter	Type	Description
self	<b>in</b> physics.Arbiters	The input Arbiters
i	<b>in</b> number	A contact point number
nvec	<b>out</b> physics.Vect	Vector normal to the ith contact point

Returns the collision [normal vector](#) for the ith contact point. Returns nil if **i** is out of the range of the number of contact points.

**Introduced in platform.apiLevel = '2.0'**

### 19.11.11 point

```
pvec = physics.Arbitrator.point(i)
```

Parameter	Type	Description
self	<b>in</b> physics.Arbitrator	The input Arbitrator
i	<b>in</b> number	A contact point number
pvec	<b>out</b> physics.Vect	The position of the ith contact point

Returns the position of the ith contact point. Returns nil if **i** is out of the range of the number of contact points.

**Introduced in platform.apiLevel = '2.0'**

### 19.11.12 setElasticity

```
self = physics.Arbitrator.setElasticity(e)
```

Parameter	Type	Description
self	<b>in</b> physics.Arbitrator	The input Arbitrator
e	<b>in</b> number	Elasticity of the collision
self	<b>out</b> physics.Arbitrator	The input Arbitrator is returned as the output

Overrides the calculated elasticity of the collision.

#### Note

May not behave as expected for e larger than 1.0 or less than 0.

**Introduced in platform.apiLevel = '2.0'**

### 19.11.13 setFriction

```
self = physics.Arbitrator.setFriction(friction)
```

Parameter	Type	Description
self	<b>in</b> physics.Arbitrator	The input Arbitrator
f	<b>in</b> number	Friction in the collision
self	<b>out</b> physics.Arbitrator	The input Arbitrator is returned as the output

Overrides the calculated friction of the collision.

#### Note

May not behave as expected for f larger than 1.0 or less than 0.

**Introduced in platform.apiLevel = '2.0'**

### 19.11.14 shapes

```
shapeA, shapeB = physics.Arbitrator.shapes()
```

Parameter	Type	Description
self	<b>in</b> physics.Arbitrator	The input Arbitrator
shapeA	<b>out</b> physics.Shape	The first Shape in the collision
shapeB	<b>out</b> physics.Shape	The second Shape in the collision

Returns shapeA and shapeB in the order they were defined in the [collision handler](#) associated with this Arbitrator.

**Introduced in platform.apiLevel = '2.0'**

### 19.11.15 totalImpulse

```
ivec = physics.Arbitrator.totalImpulse()
```

Parameter	Type	Description
self	<b>in</b> physics.Arbitrator	The input Arbitrator
ivec	<b>out</b> physics.Vect	The vector impulse applied to resolve the collision

Returns the [vector](#) impulse that was applied during this [step](#) to resolve the collision.

**Introduced in platform.apiLevel = '2.0'**

### 19.11.16 totalImpulseWithFriction

```
ivec = physics.Arbitrator.totalImpulseWithFriction()
```

Parameter	Type	Description
self	<b>in</b> physics.Arbitrator	The input Arbitrator
ivec	<b>out</b> physics.Vect	The vector impulse applied to resolve the collision

Returns the [vector](#) impulse that was applied during this [step](#) to resolve the collision. The calculated friction is taken into account.

Introduced in `platform.apiLevel = '2.0'`

## 19.12 Shape Queries

### 19.12.1 pointQuery

```
bool = physics.Shape.pointQuery(point)
```

Parameter	Type	Description
self	<b>in</b> physics.Shape	The input Shape
point	<b>in</b> physics.Vect	A point
bool	<b>out</b> boolean	True if <b>point</b> lies within the bounds of Shape

Returns true if **point** lies within the [Shape](#).

Introduced in `platform.apiLevel = '2.0'`

### 19.12.2 segmentQuery

```
info = physics.Shape.segmentQuery(vecta, vectb)
```

Parameter	Type	Description
self	<b>in</b> physics.Shape	The input Shape
vecta	<b>in</b> physics.Vect	One end point of the segment
vectb	<b>in</b> physics.Vect	The other end point of the segment
info	<b>out</b> physics.SegmentQueryInfo	Information about where the segment and Shape intersect. Nil if no intersection

Checks if the line segment from **vecta** to **vectb** intersects the [Shape](#). Returns a `SegmentQueryInfo` object with the result of the query or nil if no intersection.

If a segment query starts inside of a shape then the result is somewhat undefined. Circles and polygons will not report a collision with that shape, and segments will report an incorrect point



and normal if they do detect a collision with that shape. To get around this deficiency, use a separate point query to determine if the segment query starts inside of a shape.

See the [SegmentQueryInfo](#) methods below for helper routines to convert the results to world coordinates or absolute distance.

Introduced in `platform.apiLevel = '2.0'`

## 19.13 Space Queries

### 19.13.1 pointQuery

```
physics.Space:pointQuery(point, layers, group,  
                          function(shape) ... end)
```

Parameter	Type	Description
self	in physics.Space	The input Space
point	in physics.Vect	A point
layers	in number	A bitmap of the layers. Match if shape.layers intersects <b>layers</b>
group	in number	The group number to check. Match if Shape is not in <b>group</b>
function	function(shape)	A function to call providing each Shape in turn that matches the criteria

Queries the [Space](#) for all shapes that contain **point** and match **layers** but not in **group**. The **function** is called with each matching [Shape](#). Sensor Shapes are included.

Introduced in `platform.apiLevel = '2.0'`

### 19.13.2 pointQueryFirst

```
shape = physics.Space:pointQueryFirst(point, layers, group)
```

Parameter	Type	Description
self	in physics.Space	The input Space
point	in physics.Vect	A point
layers	in number	A bitmap of the layers. Match if shape.layers intersects <b>layers</b>
group	in number	The group number to check. Match if Shape is not in <b>group</b>

Queries [Space](#) at **point** and returns the first [Shape](#) that matches the given **layers** and and not in **group**. Returns nil if no Shape was found. Sensor Shapes are ignored.

Introduced in `platform.apiLevel = '2.0'`

### 19.13.3 segmentQuery

```
physics.Space:segmentQuery(startvect, stopvect, layers, group,  
                             function(shape, t, normal) ... end)
```

Parameter	Type	Description
self	<b>in</b> physics.Space	The input Space
startvect	<b>in</b> physics.Vect	An end point of the segment
stopvect	<b>in</b> physics.Vect	Other end point of the segment
layers	<b>in</b> number	A bitmap of the layers. Match if shape.layers intersects <b>layers</b>
group	<b>in</b> number	The group number to check. Match if object is not in <b>group</b>
function	function(shape, t, normal)	A function to call providing each Shape in turn that matches the criteria

Queries the [Space](#) for all [Shapes](#) that intersect the line segment from **startvect** to **stopvect** and match **layers** and not in **group**. The **function** is called with each matching Shape. Sensor Shapes are included.

The callback function is called with each Shape, proportion of distance along the line segment (a fraction from 0 to 1), and the surface [normal vector](#) of the intersection point of the Shape.

**Introduced in platform.apiLevel = '2.0'**

### 19.13.4 segmentQueryFirst

```
info = physics.Space:segmentQueryFirst(startvect, stopvect,  
                                         layers, group)
```

Parameter	Type	Description
self	<b>in</b> physics.Space	The input Space
startvect	<b>in</b> physics.Vect	An end point of the segment
stopvect	<b>in</b> physics.Vect	Other end point of the segment
layers	<b>in</b> number	A bitmap of the layers. Matches if shape.layers intersects <b>layers</b>
group	<b>in</b> number	The group number to check. Matches if Shape is not in <b>group</b>
info	<b>out</b> physics.SegmentQueryInfo	Information about where the segment and Shape intersect. Nil if no intersection

Queries [Space](#) along the line segment from **startvect** to **stopvect** and returns the first intersecting [Shape](#) that matches **layers** and not in **group**. Returns a SegmentQueryInfo object with the first Shape that matches the query or nil if no intersection.

**Introduced in platform.apiLevel = '2.0'**

## 19.14 SegmentQueryInfo

A SegmentQueryInfo object is a Lua dictionary table with three fields.

Key	Value
shape	Shape object found in a query.
t	Fractional distance (0 .. 1) from the start of the line segment to the intersection of the Shape.
n	Surface normal vector of the Shape at the intersection point.

This object also has the following helper routines that convert information in a SegmentQueryInfo object to world coordinates or an absolute distance along the line segment.

### 19.14.1 hitDist

```
d = SegmentQueryInfo:hitDist(startvect, stopvect)
```

Parameter	Type	Description
self	<b>in</b> physics.SegmentQueryInfo	The input SegmentQueryInfo
startvect	<b>in</b> physics.Vect	An end point of the segment
stopvect	<b>in</b> physics.Vect	Other end point of the segment
d	<b>out</b> number	Hit distance

Returns the absolute distance where the segment first hit the [Shape](#).

**Introduced in platform.apiLevel = '2.0'**

### 19.14.2 hitPoint

```
p = SegmentQueryInfo:hitPoint(startvect, stopvect)
```

Parameter	Type	Description
self	<b>in</b> physics.SegmentQueryInfo	The input SegmentQueryInfo
startvect	<b>in</b> physics.Vect	An end point of the segment
stopvect	<b>in</b> physics.Vect	Other end point of the segment
p	<b>out</b> physics.Vect	Hit point

Returns the hit point in world coordinates where the segment between **startvect** and **stopvect** first intersects the [Shape](#).

**Introduced in platform.apiLevel = '2.0'**

## Chapter 20

# *Bluetooth*<sup>®</sup> Smart Library

The *Bluetooth*<sup>®</sup> Smart Library enables TI-Nspire™ software running on platforms that support *Bluetooth*<sup>®</sup> Smart wireless technology to connect to *Bluetooth*<sup>®</sup> LE devices (Low Energy) supporting the peripheral role. As some of the communication is asynchronous, each asynchronous function providing a result requires a callback to receive responses and events. Responses are the asynchronously provided results values for a request and events are additional state information over a period of time, e.g. the duration of an established connection.

### 20.1 *Bluetooth*<sup>®</sup> LE

The *Bluetooth*<sup>®</sup> LE Library summarizes all generic functionality related to *Bluetooth*<sup>®</sup> LE technology offered inside the TI-Nspire™ platform.

#### 20.1.1 addStateListener

```
ble.addStateListener(callback [, object])
```

Registers a *Bluetooth*<sup>®</sup> LE state-change listener callback. The registration of multiple listener callbacks at the same time is supported. Registered listener callbacks can be removed by calling **removeStateListener**.

Parameter	Type	Description
callback	<b>in</b> function	Callback to receive unsolicited events about <i>Bluetooth</i> <sup>®</sup> LE state changes
object	<b>in</b> any ( <b>optional</b> )	If an object is provided it will be passed as the first parameter to the specified callback function. The object can be of any type except <b>nil</b> .

## Callback Function

```
callback([object,] state)
```

The callback function provided in **addStateListener** will be called for unsolicited *Bluetooth*<sup>®</sup> LE state changes. This includes switching on/off *Bluetooth*<sup>®</sup> technology or the OS resetting the *Bluetooth*<sup>®</sup> stack.

Parameter	Type	Description
object	<b>in</b> any ( <b>optional</b> )	If an object was provided as a parameter to the function <b>addStateListener</b> , it will be passed as the first parameter to this callback function
state	<b>in ble</b> table constant	Please see the following section for details

## *Bluetooth*<sup>®</sup> LE State Constants

The constants described in the following table are part of the **ble** table, e.g. **ble.OFF**.

Name	Description
<b>ON</b>	<i>Bluetooth</i> <sup>®</sup> technology is switched on
<b>OFF</b>	<i>Bluetooth</i> <sup>®</sup> technology is switched off. This implies that any ongoing scan has been stopped and connected peripherals lose their connection.
<b>RESETTING</b>	The <i>Bluetooth</i> <sup>®</sup> stack is resetting. This is an intermittent state and an update will follow. <b>In this state the Lua script should release all <i>Bluetooth</i><sup>®</sup> LE object references as these objects have become invalid and cannot be used anymore.</b> The use of invalidated objects will cause a Lua error.
<b>UNSUPPORTED</b>	<i>Bluetooth</i> <sup>®</sup> technology is not supported on this platform

Introduced in `platform.apiLevel = '2.5'`

### 20.1.2 removeStateListener

```
success = ble.removeStateListener(callback)
```

Removes a registered *Bluetooth*<sup>®</sup> LE state-change listener callback which was previously registered by calling **addStateListener**.

Parameter	Type	Description
callback	<b>in</b> function	The callback previously registered by calling <b>addStateListener</b>
success	<b>out</b> boolean	true if successful, otherwise false if specified listener was never added

Introduced in `platform.apiLevel = '2.5'`

### 20.1.3 pack

```
characteristicValue = ble.pack("formatString", ...)
```

Packs one or multiple Lua values into a *Bluetooth*<sup>®</sup> LE characteristic data value. The number or arguments after the **formatString** must match the number of formats specified inside the **formatString**. The format specifier used to build the **formatString** as specified in [Table 20.1](#) on page 145 and additional details can be found in [subsection 20.1.5](#) on page 144.

Parameter	Type	Description
"formatString"	<b>in</b> string	Lists one or multiple formats to be packed
...	<b>in</b> any	The parameter list associated to the format specified
characteristicValue	<b>out</b> string	The packed characteristic value to be written

Listing 20.1: Example Showing the use of **ble.pack()**

```
data = ble.pack("bb2b", true, 2, false) -- binary data 1100
data = ble.pack("bbr2b", true, false, true) -- binary data 10001
```

If the format is complex and repetitively used across multiple characteristic values it is possible to split the packing of the data into multiple calls to **pack**. Combining the multiple **pack** results into one piece of data can be achieved by string concatenation. [Listing 20.2](#) shows two simple lines which result in the same data value.

Listing 20.2: Concatenation of Multiple calls to **ble.pack()**

```
data1 = ble.pack('u8u8', 10, 12)
data2 = ble.pack('u8', 10) .. ble.pack('u8', 12)
```

Introduced in `platform.apiLevel = '2.5'`

### 20.1.4 unpack

```
..., remnant = ble.unpack("formatString", characteristicValue)
```

Unpacks a *Bluetooth*<sup>®</sup> LE characteristic data value into one or multiple Lua values. The number of returned values is defined by the format specifiers inside the **formatString**. All supported format specifiers are listed in [Table 20.1](#) on page 145, and additional details can be found in [subsection 20.1.5](#) on page 144.

Parameter	Type	Description
"formatString"	<b>in</b> string	Lists one or multiple formats to be packed
characteristicValue	<b>in</b> string	The characteristic value read
...	<b>out</b> any	The parameter list associated to the format specified
remnant	<b>out</b> string	The remnant of the characteristicValue if the format did not decode all data, or <b>nil</b> otherwise

Listing 20.3: Example Showing the use of `ble.unpack()`

```
bool1, number, bool2 = ble.unpack("bb2b", data)
bool1, bool2, bool3 = ble.unpack("bbr2b", data)
```

Similar to the `pack` function it is possible to split the unpacking of the data into multiple calls to `unpack`. This can be achieved by passing the remnant returned of one call to `unpack` as characteristic value to the next call of `unpack`. Listing 20.4 show the two scenarios.

Listing 20.4: Splitting Unpacking into Multiple calls to `ble.unpack()`

```
ten, twelve = ble.unpack('u8u8', '\\10\\12')
ten, remnant = ble.unpack('u8', '\\10\\12') -- returns 10, '\\12'
twelve = ble.unpack('u8', remnant) -- returns 12, nil
```

Introduced in `platform.apiLevel = '2.5'`

### 20.1.5 Format Specifier for `pack` and `unpack`

The sections contains explanations and additional information to the Table 20.1 on page 145. The format specifier `rX`, which means a lower case `r` followed by a number, serves the purpose of skipping bits but does not read or write any data. Therefore the nature of this format is different from any other format and no Lua type is associated to this format. Skipping of bits is only needed if more than one format is used in a row which have all bit alignment.

#### Bit versus Octet Alignment

An octet is a set of 8 bits which is often also described as a byte. Bit alignment means that the format `"bbn"` will read/write 6 bits inside of 1 octet. These formats read/write a stream of bits. If 8 bits are written, writing just continues, without respect to octet borders. So a nibble (4 bits) can be split across 2 octets, depending on how many bits have been read/written before.

Octet alignment is different. The format `"u12u12"` describes 24 bits of data and could be in theory written into 3 octets if `u12` were bit aligned (`"nnnnnn"` 3 octets). But as `u12` is byte aligned the second 12 bit integer will read from/write into a new octet so that 4 octets are used.

Now what does the format `"u12n"` do? An octet-aligned format enforces octet alignment surrounding itself - it reads/writes on the next octet border and enforces a potentially following format on a octet border as well.

#### Exponent

The *Bluetooth*<sup>®</sup> LE specification allows exponents for integer types ( $1.2 * 10^{exponent}$ ). The exponent is not encoded inside the data itself but needs to be used on encoding and decoding of the data. This concept is known as fixed-point number format. If an exponent is allowed for a format but no exponent is specified it defaults to 0 ( $10^0$ ). if an exponent is specified read/write of the format will apply the exponent automatically (`"u8e1u8e-1s16e-7"`). Simply add a lower case `e` followed by a number after the format specifier.

Table 20.1: Format specifier for **pack** and **unpack**

Format Specifier	Data Type Description	Lua Type	Alignment	Exponent
rX	X number of bits skipped	N/A	bit	N/A
b	boolean	boolean	bit	No
b2	2 bits	number	bit	No
n	4 bits (nibble)	number	bit	No
u8	unsigned integer 8 bits	number	octet	Yes
u12	unsigned integer 12 bits	number	octet	Yes
u16	unsigned integer 16 bits	number	octet	Yes
u24	unsigned integer 24 bits	number	octet	Yes
u32	unsigned integer 32 bits	number	octet	Yes
u48	unsigned integer 48 bits	number	octet	Yes
s8	signed integer 8 bits	number	octet	Yes
s12	signed integer 12 bits	number	octet	Yes
s16	signed integer 16 bits	number	octet	Yes
s24	signed integer 24 bits	number	octet	Yes
s32	signed integer 32 bits	number	octet	Yes
s48	signed integer 48 bits	number	octet	Yes
f	IEEE-754 32-bit floating point	number	octet	No
fl	IEEE-754 64-bit floating point	number	octet	No
S8	UTF-8 string	string	octet	No
S16	UTF-16 string	string	octet	No

## 20.2 *Bluetooth*<sup>®</sup> LE Central

### 20.2.1 startScanning

```
error = bleCentral.startScanning([UUID, ] callback [, object])
```

Scans for *Bluetooth*<sup>®</sup> LE devices advertising a service with the given service UUID (Universal Unique Identifier) or for *Bluetooth*<sup>®</sup> LE devices advertising any service if no UUID is provided. Successive calls of **startScanning** automatically stop previous scans. A malformed UUID will cause a Lua error as this is an authoring error and not a run-time error.



Parameter	Type	Description
UUID	<b>in</b> string ( <b>optional</b> )	UUID of the service searched for. The UUID can be provided in 16- or 128-bit format.
callback	<b>in</b> function	Callback to receive asynchronously peripherals found, one peripheral at a time
object	<b>in</b> any ( <b>optional</b> )	If an object is provided it will be passed as the first parameter to the specified callback function. The object can be of any type except <b>nil</b> .
error	<b>out</b> string ( <b>optional</b> )	If successful <b>nil</b> is returned, an error message otherwise

Introduced in `platform.apiLevel = '2.5'`

### Callback Function

```
callback([object,] peripheral, advertisementData, isConnectable, RSSI)
```

The callback function provided in `startScanning` will be called for every *Bluetooth*<sup>®</sup> LE device fulfilling the search criteria. The peripheral parameter will be a peripheral object representing the found *Bluetooth*<sup>®</sup> LE device. The same peripheral object might be reported more than once based on peripheral and platform behavior.

Parameter	Type	Description
object	<b>in</b> any ( <b>optional</b> )	If an object was provided as a parameter to the function <code>startScanning</code> , it will be passed as the first parameter to this callback function
peripheral	<b>in</b> peripheral object	One peripheral found during scanning
advertisementData	<b>in</b> table	A table containing the advertisement data of the device.
isConnectable	<b>in</b> boolean	<b>true</b> if the device advertises as connectable, otherwise <b>false</b>
RSSI	<b>in</b> Integer value	The received signal strength indicator (RSSI) in dbm.

### Advertisement Data Keys

The constants described in the following table are part of the `ble` table, e.g. `ble.AD_TX_POWER_LEVEL`.

Name	Description
<b>AD_NAME</b>	Same as the device name or a shortened name. Please see <a href="#">subsection 20.3.1</a> for <code>peripheral.getName()</code> .
<b>AD_MANUFACTURER_DATA</b>	A string with the first 2 octets identifying the manufacturer (see <a href="#">Company Identifiers</a> ). The interpretation of any other octet in the string is manufacturer specific.
<b>AD_SERVICE_UUIDS</b>	A list of service UUIDs. This list might be complete or not.
<b>AD_TX_POWER_LEVEL</b>	If provided by the device, the sending power level of the device in dBm. Subtracting the RSSI value from the power level can be used to compare the approximate distance of different devices.

Introduced in `platform.apiLevel = '2.5'`

Extended in `platform.apiLevel = '2.6'`

### 20.2.2 stopScanning

```
bleCentral.stopScanning()
```

Stops scanning for *Bluetooth*<sup>®</sup> LE devices.

Introduced in `platform.apiLevel = '2.5'`

### 20.2.3 isScanning

```
bleCentral.isScanning()
```

Returns **true** if a scan for *Bluetooth*<sup>®</sup> LE devices is ongoing or **false** otherwise.

Introduced in `platform.apiLevel = '2.5'`

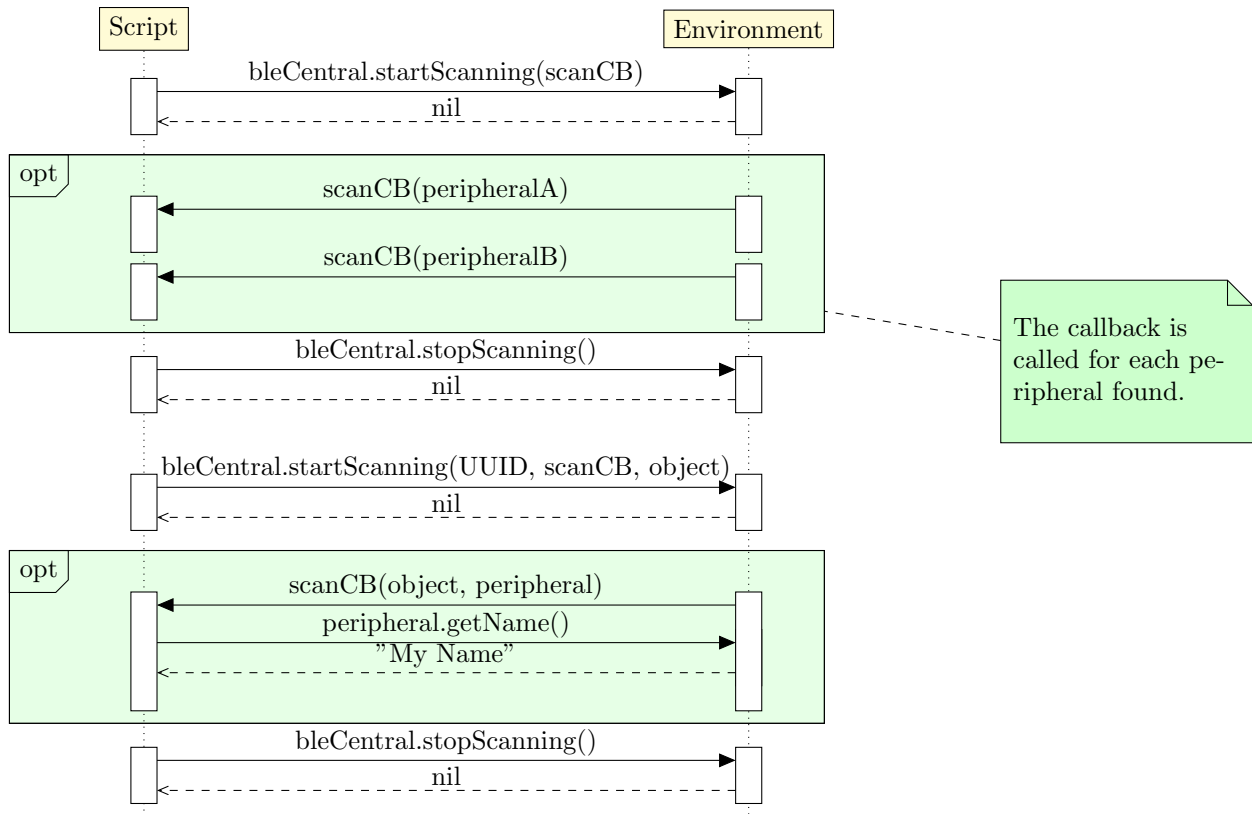


Figure 20.1: *Bluetooth*<sup>®</sup> LE Scanning Procedure

## 20.3 Peripheral Class

### 20.3.1 getName

```
name = peripheral:getName()
```

Returns the name of the peripheral as a string. The peripheral name is what an Application would typically show to the user. There is no guarantee that two different devices have different names. On the contrary two devices of the same kind and vendor could show the same name until changed by the user. If no name is available at the point of time **nil** will be returned. Changing the name for *Bluetooth*<sup>®</sup> LE device could be device specific.

**Introduced in platform.apiLevel = '2.5'**

### 20.3.2 getState

```
state = peripheral:getState()
```

Returns the connection state - disconnected, connecting, connected, disconnecting.

Listing 20.5: Example for `peripheral:getState()`

```
function isConnected(peripheral)
  return peripheral:getState() == bleCentral.CONNECTED
end
```

Introduced in `platform.apiLevel = '2.5'`

### 20.3.3 connect

```
error = peripheral:connect([timeout, ]callback [, object])
```

Requests connection to the *Bluetooth*<sup>®</sup> LE device represented by the peripheral object. The callback will be called for all events related to the connection state of this peripheral object. An optional timeout can be provided to automatically abort the request after the time specified. After disconnecting or after a failure during the connection procedure, the specified callback will not be referenced anymore.

#### Caution

Please make sure you disconnect peripheral objects before closing the document. A simple way to do so is by calling `peripheral:disconnect()` from the `on.destroy()` event.

Parameter	Type	Description
timeout	in number (optional)	If provided, connection request aborts after the specified time in seconds. The specified time can be between 0 and 3600. 0 or less waits forever, anything above 3600 defaults to 3600.
callback	in function	Callback to receive asynchronous events about the connection state
object	in any (optional)	If an object is provided it will be passed as the first parameter to the specified callback function. The object can be of any type except <code>nil</code> .
error	out string (optional)	If successful <code>nil</code> is returned, an error message otherwise

Introduced in `platform.apiLevel = '2.5'`

Extended in `platform.apiLevel = '2.6'`

#### Callback Function

```
callback([object,] peripheral, event [, error])
```

The callback function provided in **peripheral:connect()** will be called for every event related to the connection state between the *Bluetooth*<sup>®</sup> LE central and the peripheral. Based on whether an object was provided in the call to **connectPeripheral**, the callback should have three or four parameters.

Parameter	Type	Description
object	<b>in any (optional)</b>	If an object was provided as a parameter to the function <b>startScanning</b> , it will be passed as the first parameter to this callback function
peripheral	<b>in peripheral object</b>	A peripheral found during scanning
event	<b>in bleCentral table constant</b>	Please see the following section for details
error	<b>in string (optional)</b>	If successfully connected or disconnected the parameter will be <b>nil</b> , an error message otherwise (unsuccessful connection or dropped connected)

### Event Constants

The constants described in the following table are part of the **bleCentral** table, e.g. **bleCentral.CONNECTED**.

Name	Description
<b>CONNECTED</b>	The connection has been successfully established
<b>CONNECTING_FAILED</b>	The connect procedure failed. A new call of the <b>connect()</b> function is required to retry connecting.
<b>DISCONNECTED</b>	The connection has been successfully terminated

Introduced in **platform.apiLevel = '2.5'**

### 20.3.4 disconnect

```
peripheral:disconnect()
```

Disconnects the connection with the peripheral object. The callback provided in **connectPeripheral** will be called to confirm completion of the disconnect procedure.

Introduced in **platform.apiLevel = '2.5'**

### 20.3.5 discoverServices

```
error = peripheral:discoverServices([UUIDs, ] callback [, object])
```

Initiates the services discovery procedure for the peripheral object. The callback will be called once on completion of the procedure. The discovery may complete successfully or fail.

Parameter	Type	Description
UUID(s)	<b>in</b> string(s) ( <b>optional</b> )	0 to 10 UUIDs, identifying services to search for. Omit this parameter to search for all services. A UUID can be provided in 16- or 128-bit format.
callback	<b>in</b> function	Callback to inform about the completion of the service discovery procedure. A call to <b>getServices()</b> of the <b>peripheral</b> object provides the results.
object	<b>in</b> any ( <b>optional</b> )	If an object is provided it will be passed as the first parameter to the specified callback function. The object can be of any type except <b>nil</b> .
error	<b>out</b> string ( <b>optional</b> )	If successful <b>nil</b> is returned, an error message otherwise

Introduced in `platform.apiLevel = '2.5'`

#### Callback Function

```
callback([object, ] peripheral [, error])
```

The callback function provided in **discoverServices** will be called once when the services discovery procedure completes. Based on whether an object was provided in the call to **discoverServices**, the callback should have two or three parameters. The error will be **nil** if the procedure completed successfully. Calling **getServices** will retrieve the discovered services.

Parameter	Type	Description
object	<b>in</b> any ( <b>optional</b> )	If an object was provided as a parameter to the function <b>discoverServices</b> , it will be passed as the first parameter to this callback function
peripheral	<b>in</b> peripheral object	The peripheral object offering the discovered services
error	<b>in</b> string ( <b>optional</b> )	If successful the parameter will be <b>nil</b> , an error message otherwise

Introduced in `platform.apiLevel = '2.5'`

## 20.3.6 getServices

```
table [, error] = peripheral:getServices()
```

Returns a table containing the list of services discovered which can be traversed with the help of the `ipairs` function. An empty table is returned if no services were discovered or if `getServices` gets called before the service discovery procedure completes. In case of an error, `nil` is returned together with an error message. See [discoverServices](#) (subsection 20.3.5 on page 151).

Parameter	Type	Description
table	<b>out</b> table	A table containing the discovered services otherwise <b>nil</b> if an error occurred
error	<b>out</b> string ( <b>optional</b> )	If successful <b>nil</b> is returned, an error message otherwise

Introduced in `platform.apiLevel = '2.5'`

## 20.4 Service Class

### 20.4.1 getUUID

```
UUID = service:getUUID()
```

Returns the UUID of the service as string.

Introduced in `platform.apiLevel = '2.5'`

### 20.4.2 discoverCharacteristics

```
error = service:discoverCharacteristics([UUIDs, ] callback [, object])
```

Initiates the characteristics discovery procedure for the service object. The callback will be called once on completion of the procedure. The discovery may complete successfully or fail.

Parameter	Type	Description
UUID(s)	<b>in</b> string(s) ( <b>optional</b> )	0 to 10 UUIDs, identifying characteristics to search for. Omit this parameter to search for all characteristics. A UUID can be provided in 16- or 128-bit format.
callback	<b>in</b> function	Callback to inform about the completion of the characteristics discovery procedure. A call to <b>getCharacteristics()</b> of the <b>service</b> object provides the results.
object	<b>in</b> any ( <b>optional</b> )	If an object is provided it will be passed as the first parameter to the specified callback function. The object can be of any type except <b>nil</b> .
error	<b>out</b> string ( <b>optional</b> )	If successful <b>nil</b> is returned, an error message otherwise

Introduced in `platform.apiLevel = '2.5'`

### Callback Function

```
callback([object,] service [, error])
```

The callback function provided in **discoverCharacteristics** will be called once when the characteristics discovery procedure completes. Based on whether an object was provided in the call to **discoverCharacteristics**, the callback should have two or three parameters. The error will be **nil** if the procedure completed successfully. Calling **getCharacteristics** will retrieve the discovered characteristics.

Parameter	Type	Description
object	<b>in</b> any ( <b>optional</b> )	If an object was provided as a parameter to the function <b>discoverCharacteristics</b> , it will be passed as the first parameter to this callback function
service	<b>in</b> service object	The service object offering the discovered characteristics
error	<b>in</b> string ( <b>optional</b> )	If successful the parameter will be <b>nil</b> , an error message otherwise

Introduced in `platform.apiLevel = '2.5'`



### 20.4.3 getCharacteristics

```
table [, error] = service:getCharacteristics()
```

Returns a table containing the list of characteristics discovered which can be traversed with the help of the `ipairs` function. An empty table is returned if no characteristics were discovered or if `getCharacteristics` gets called before the characteristic discovery procedure completes. In case of an error, `nil` is returned together with an error message. See [discoverCharacteristics](#) (subsection 20.4.2 on page 152).

Parameter	Type	Description
table	<b>out</b> table	A table containing the discovered characteristics otherwise <b>nil</b> if an error occurred
error	<b>out</b> string ( <b>optional</b> )	If successful <b>nil</b> is returned, an error message otherwise

Introduced in `platform.apiLevel = '2.5'`

## 20.5 Characteristic Class

### 20.5.1 getUUID

```
UUID = characteristic:getUUID()
```

Returns the UUID of the characteristic as a string.

Introduced in `platform.apiLevel = '2.5'`

### 20.5.2 setValueUpdateListener

```
characteristic:setValueUpdateListener(callback [, object])
```

Sets or removes the value-update listener callback for read and notification updates. To remove the callback, use `nil` as callback parameter. Once the listener callback is called the result can be retrieved via `getValue()`. This function can be called at any time to update the value update listener callback for a discovered characteristic.

Parameter	Type	Description
callback	in function	The callback is called once the characteristic value is ready to be retrieved via the <code>getValue()</code> function
object	in any (optional)	If a callback is provided, optionally an object can be specified which will be passed as the first parameter to the specified callback function. The object can be of any type except <code>nil</code> .

### Callback Function

```
callback([object,] characteristic [, error])
```

The callback function informs when the characteristic value is ready to be retrieved via the `getValue()` function. The callback should not be used to initiate another read for the same characteristic.

Parameter	Type	Description
object	in any (optional)	If an object was provided as a parameter to the function <code>setValueUpdateListener</code> , it will be passed as the first parameter to this callback function
characteristic	in characteristic object	The characteristic for which the value can be read
error	in string (optional)	If successful the parameter will be <code>nil</code> , an error message otherwise

Introduced in `platform.apiLevel = '2.5'`

### 20.5.3 setWriteCompleteListener

```
characteristic:setWriteCompleteListener(callback [, object])
```

Sets or removes the write-complete listener callback for write requests. To remove the callback, use **nil** as the callback parameter. This callback is only called for write requests and not write commands. The type of the write procedure depends on the boolean value specified when calling **write**. This function can be called at any time to update the write complete listener callback for a discovered characteristic.

Parameter	Type	Description
callback	<b>in</b> function	Callback to inform about the completion of the write procedure
object	<b>in</b> any ( <b>optional</b> )	If a callback is provided, optionally an object can be specified which will be passed as the first parameter to the specified callback function. The object can be of any type except <b>nil</b> .

#### Callback Function

```
callback([object,] characteristic [, error])
```

The callback function will be called to confirm completion of a write request procedure.

Parameter	Type	Description
object	<b>in</b> any ( <b>optional</b> )	If an object was provided as a parameter to the function <b>setWriteCompleteListener</b> , it will be passed as the first parameter to this callback function
characteristic	<b>in</b> characteristic object	The characteristic for which the value was written
error	<b>in</b> string ( <b>optional</b> )	If successful the parameter will be <b>nil</b> , an error message otherwise

Introduced in `platform.apiLevel = '2.5'`

## 20.5.4 read

```
error = characteristic:read()
```

Initiates reading the characteristics value. If a listener callback is provided with **setValueUpdateListener** for this characteristic (see [subsection 20.5.2](#) on page 155) it will be called once the read operation completes and the result can be retrieved via **getValue()**. There is no guarantee that for every single call to the read function a dedicated call of the callback will happen. The system may decide to combine multiple completions of read requests into a single call of the callback.

Parameter	Type	Description
error	out string (optional)	If successful <b>nil</b> is returned, an error message otherwise

Introduced in `platform.apiLevel = '2.5'`

## 20.5.5 setNotify

```
error = characteristic:setNotify(doEnable)
```

Enables or disables continuous notification mode for the value of the characteristic, provided the characteristic of the device supports this feature. If **true** is passed, notifications get enabled, whereas **false** will stop notifications. The notification period, changeability of the notification period and the method of changing the notification period is *Bluetooth*<sup>®</sup> LE device specific. The peripheral needs to be connected so that a call to **setNotify** can have an effect. If a listener callback is provided with **setValueUpdateListener** for this characteristic (see [subsection 20.5.2](#) on page 155) it will be called when a new value can be retrieved via **getValue()**. There is no guarantee that for every single response from the device a dedicated call of the callback will happen. The system may decide to combine multiple as well as completions of read requests into a single call of the callback.

Parameter	Type	Description
doEnable	in boolean	<b>true</b> will enable notifications, otherwise <b>false</b> will stop notifications
error	out string (optional)	If successful <b>nil</b> is returned, an error message otherwise

Introduced in `platform.apiLevel = '2.5'`

## 20.5.6 getValue

```
value = characteristic:getValue()
```

Returns the Value of the characteristic as string.

Introduced in `platform.apiLevel = '2.5'`

## 20.5.7 write

```
error = characteristic:write(data, [isRequest])
```

Sets the **data** string attribute as the new characteristic value. Based on the supported write procedure of the device characteristic, the form of a request or a command might be required or not allowed. If both procedures are supported by the device characteristic, it is an author's choice which procedure to use. There is currently no function to retrieve the characteristic property and it is therefore the author's responsibility to either find out the information about the device characteristic or use trial-and-error. A write request – as opposed to a write command – will send back an information about the success, please see [subsection 20.5.3](#) on page 156.

Parameter	Type	Description
data	<b>in</b> string	Data to be written. Data with zero length is not supported.
isRequest	<b>in</b> boolean	If <b>true</b> a write request will be send otherwise a write command
error	<b>out</b> string ( <b>optional</b> )	If successful <b>nil</b> is returned, an error message otherwise

**Introduced in platform.apiLevel = '2.5'**

# Appendix A

## Script Compatibility

This Appendix summarizes aspects about different types of compatibility issues and concepts for Lua scripts inside the TI-Nspire™ platform. It supports authoring documents for a mixed environment of TI-Nspire™ software releases and different platforms. Authoring scripts for a higher API level than supported inside a current script development environment is detailed in [section A.2](#) on page 160.

### A.1 Backward and Forward Compatibility

There are two compatibility concepts implemented in the TI-Nspire™ platform. The following sections describe these concepts and their interaction. Understanding both is essential to author documents able to run in environments with mixed TI-Nspire™ software releases. If this is not desired, you can skip [section A.1](#) and continue reading [section A.2](#) on page 160.

#### A.1.1 Document Compatibility

This is an old concept of the TI-Nspire™ platform. For every document there are two different TI-Nspire™ release values — the release where the document was “last saved” and a “minimum requested” release. Any TI-Nspire™ release with a lower release number than the “minimum requested” release, blocks opening the document. If the TI-Nspire™ release is at least the “last saved” release level, the document will open without warning.

This concept has been recently enhanced. The “minimum requested” release is now determined dynamically based on the content. This allows a lower minimum release; however, changing the document content may raise the “minimum requested” release dynamically.

Script authors interested in backwards compatibility of scripts need to understand that changing non-scripting content inside the same document as the script might modify the “minimum release.” Currently, there is no better support for the script writer to understand what the “minimum requested” releases is other than opening the document manually with multiple releases of the TI-Nspire™ software.

If the document contains only scripts, the rule is simple. Documents will open, but scripts may fail if the used API level is not supported. The earliest software able to open documents

containing scripts is TI-Nspire™ software version 3.1. As an exception, the 3.1 software release only opens documents if all contained scripts are of **platform.apiLevel = '1.0'**.

### A.1.2 Scripting Compatibility

Scripts written for the TI-Nspire™ platform are by default forward compatible on the particular platforms the script was designed and tested for (platform compatibility will be discussed in [section A.3](#) on page 161). The key component to ensure forward compatibility is the API level concept. The API level specifies the scripting interface of a particular TI-Nspire™ software release. The mapping between the software release and its highest supported API level is shown in [Table A.1](#) on page 161. The highest supported, or current API level of a software release used to create a script, is the default API level for scripts when initially authored. The API level can be changed manually by the author at any time.

Backwards compatibility of scripts can be reached by requesting the API level of the oldest TI-Nspire™ software release that is targeted to run the script. To support software release 3.1, the script would request **platform.apiLevel = '1.0'**.

The requested API level of the script is not guaranteed, as an older TI-Nspire™ software version running the script may not support this API level. In addition, requesting an API level that does not exist or is not supported in the used TI-Nspire™ software version will result to the highest supported API level, but not higher than the requested API level. If the script requires a minimum API level to run successful, it might be the simplest solution to prevent the script from executing. This can be archived via the File Menu in the Script Editor.

As an exception to the outlined API level behavior, requesting an API level below 1.0 will result in the current API level of the software release. Please see [Table A.1](#) on page 161 for more details. Please see [section A.2](#) on page 160 for a useful example of requesting an API level that is not supported .

## A.2 Creating Scripts for a Future Software Release

There might be times when a new version of TI-Nspire™ software with a higher API Level is released, but it does not contain a development environment. In this case, the new functions of the higher API level must be used conditionally at run time. In addition, the authoring process might become a two-step approach. After first authoring the script and saving the document on the authoring platform, it might be that TI-Nspire™ software marks the document dirty when opened first on the target API level platform. When this happens please save the script on the target platform. Saving the document in such a case will be the second step of the authoring process. Once this second step is completed for a specific document it will be usually not be requested again.

An example of how this can be accomplished for the touch library when developing with OS version 3.2 is shown in [Listing A.1](#). This Lua snippet should be the first section in the script. The touch library is not defined in **platform.apiLevel = '2.0'** but in all future releases.

Table A.1: Mapping between API level and TI-Nspire™ software version

API Level	Software Version	Comment
'1.0'	3.1	Initial release supporting Lua scripting.
'2.0'	3.2	Major update containing physics and many other new binding.
'2.2'	3.4	Introduction of low-level support for touch platforms.
'2.3'	3.6	Image resources
'2.4'	3.7	Support for background color and painted rectangle
'2.5'	3.11	Bluetooth LE
'2.6'	4.1	Bluetooth LE added APIs - Advertisement data, RSSI, time-out for connect procedure

Listing A.1: Authoring for a Future Software Release for the Example of Touch

```
platform.apiLevel = '2.2'
if touch then
  if not touch.enabled then
    function touch.enabled() return true end
    function touch.isKeyboardAvailable() return true end
  end
else
  touch = {}
  function touch.enable() return false end
end
```

### A.3 Platform Compatibility

A script author usually prefers to write scripts that are platform independent. Unfortunately this is not true for every feature supported by all platforms. [Table A.2](#) on page 162 shows the major differences. It is the script authors choice to avoid them, use them on selected platforms only, or try to achieve a seamless user experience across all platforms. In the latter case, authors should test scripts on all platforms.



Table A.2: Overview about platform incompatibilities

<b>Feature</b>	<b>Desktop</b>	<b>Handheld</b>	<b>Touch Platform</b>
<b>on.grabDown</b> <b>on.grabUp</b>	Supported, (x, y) == (0, 0)	Supported, same as Desktop if no mouse visible	Not supported
<b>on.returnKey()</b>	Not supported	Supported	Supported
Context Menu	<b>on.contextMenu()</b> <b>on.rightMouseDown()</b> <b>on.rightMouseUp()</b>	<b>on.contextMenu()</b>	Not supported

## Appendix B

# Deprecated API Functions and API Behavior

### B.1 Image Library

Before `platform.apiLevel = '2.3'`, images were encoded as strings within the script itself. Only the TI-Nspire™ Script Editor of the software version 3.2 supports authoring images encoded as strings inside the script itself.

The following provides details about the encoding.

The header consists of 20 bytes of data arranged as presented in the following table. All fields are little endian integers.

Offset	Width (bytes)	Contents
0	4	Pixel width of image
4	4	Pixel height of image
8	1	Image alignment (0)
9	1	Flags (0)
10	2	Pad (0)
12	4	The number of bytes between successive raster lines
16	2	The number of bits per pixel (16)
18	2	Planes per bit (1)

The image pixel data immediately follows the header. Pixels are arranged in rows. Each pixel is a little endian 16-bit integer with five bits for each color red, green, and blue. The top bit determines if the pixel is drawn. If it is zero (0), the pixel is not drawn. If it is one (1), the pixel is drawn in the RGB color of the remaining 15 bits.

0x8000 is black, 0x801F is blue, 0x83E0 is green, 0xFC00 is red, and 0xFFFF is white.

## B.2 Platform Library

### B.2.1 gc

```
platform.gc()
```

This function has been replaced by `platform.withGC()`, but if you want to author or modify scripts with `platform.apiLevel = '1.0'` you still need this function.

This graphics context should not be used for drawing purposes because it is not guaranteed to be associated with a window.

[Listing B.1](#) shows an example of using the static graphics context to get the string width and height.

Listing B.1: Use of the static GC in `platform.apiLevel = '1.0'`

```
local gc = platform.gc()
gc:setFont('serif', 'r', 10)
local width = gc:getStringWidth(a_string)
local height = gc:getStringHeight(a_string)
```

Introduced in `platform.apiLevel = '1.0'`

Removed in `platform.apiLevel = '2.0'`

## B.3 Platform Library

### B.3.1 drawString Vertical Alignment

```
gc:drawString("text", x, y [, verticalalignment])
```

Prior to `platform.apiLevel = '2.3'`, “none” was used to specify unspecified vertical alignment. The vertical alignment “none” has been deprecated. Specifying no alignment defaults to “top” and so does “none”.

Introduced in `platform.apiLevel = '1.0'`

Extended in `platform.apiLevel = '2.3'`

## B.4 Requested API Level

Prior to TI-Nspire™ software version 3.6 (`platform.apiLevel = '2.3'`), requesting a non-supported API level resulted in the highest API level supported by the TI-Nspire™ software version used to run the script. This behavior has been revised. See [section 14.1](#) on page 53 for details about the new revised behavior.

Introduced in `platform.apiLevel = '2.0'`

Extended in `platform.apiLevel = '2.3'`