

## Teacher Notes



# Causes of the Great Depression

## Activity 1 Investigating the Cause of the Great Depression

### *Activity Overview*

This activity will involve students in using the Internet to research the causes of the Great Depression. The students will synthesize their information into StudyCards™ files that will be discussed in class. The students will use the information gathered and shared to create a list of the causes of the Great Depression.

### *Tip*

This activity will require student access to web resources on a computer that will also be running the StudyCards™ Creator. The students will need to be familiar with StudyCards™ Creator. A tip sheet for the program is included at the end of this lesson.

## Activity at a Glance

- ◆ **Subject:** Social Studies
- ◆ **Subject Area:** U. S. History
- ◆ **Category:** Great Depression
- ◆ **Topic:** Great Depression
- ◆ **Grade Level:** 9 - 11
- ◆ **Prerequisites:** Students should be familiar with the economy of the twenties to show the changes that led to the Great Depression.
- ◆ **Total Teaching Time:** 45 minutes

## Materials

- ◆ TI-83 Plus
- ◆ TI External Keyboard
- ◆ Computer with Internet Access
- ◆ StudyCards™ Creator Software
- ◆ StudyCards™ Application for TI-83 Plus
- ◆ StudyCards™ stack: **CAUSES.8xv**
- ◆ TI-GRAPH LINK™ cable

## ***Directions***

### ***Before the Activity Begins***

Students begin this activity by researching the causes of the Great Depression. A list of Web sites providing information on causes is included in this lesson, but the readability of the sites for a group of students must be determined by the teacher. Teachers with limited Internet facilities may also wish to supplement the web research with other resources such as textbooks and library research materials. Students will also use the StudyCards™ Creator software. The teacher should be ready to explain how to use the program. Instructions for using StudyCards™ Creator are provided at the end of this activity.

### ***Warm-up Activity***

Conduct a class discussion using the following questions:

- ◆ What causes change in the economy?
- ◆ What events in your lifetime have impacted the economy?
- ◆ Can government affect the economy for the better? The worse? How?
- ◆ What types of events have the greatest effect on the economy?

This is also a good opportunity to discuss the issue of bias and how it affects how people view events. This can be connected to the research that the students are doing. Remind students that in their research on the causes of the Great Depression, it will be important to determine who is supplying the information and how their account might reflect their bias. It will be helpful for students to review the following questions as a part of their review of the website:

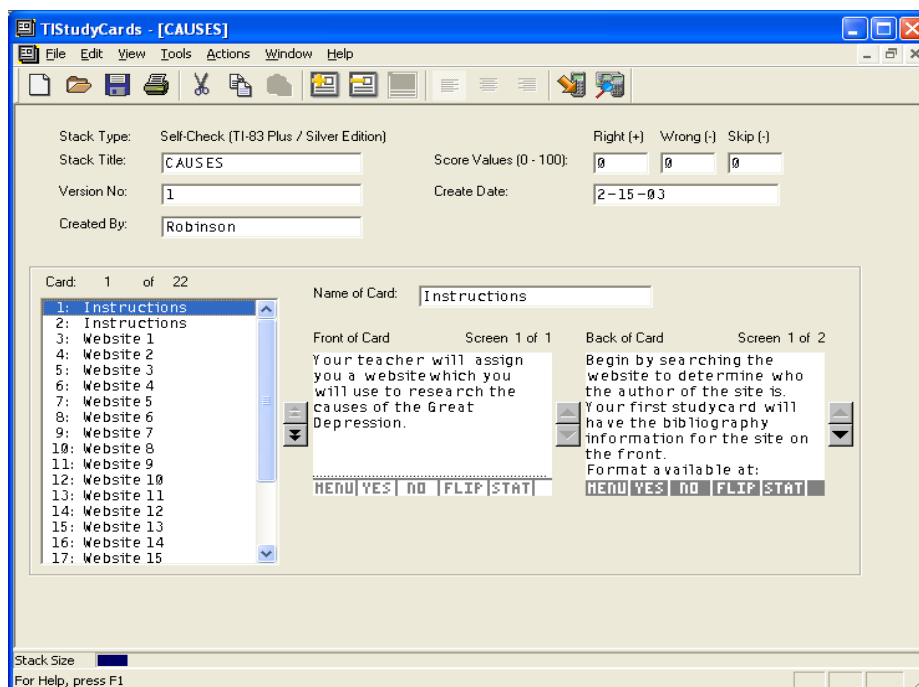
- ◆ Who created the Web site?
- ◆ What is the purpose of the Web site?
- ◆ Is there a bias evident in the site?

For highly able students, you may wish to discuss the issue of Keynesian economics and its explanation for the Great Depression.


### ***During the Activity***

The students can work in pairs or individually. The students should begin work by accessing the StudyCards™ file entitled **CAUSES.8xv**. The stack provides a list of Web sites corresponding to those listed in this activity. Students should be assigned a number from one to twenty which will identify the Web site that the student is to use for their research. The information that the students collect will be downloaded to the TI-83 Plus devices for the debriefing activity. The sites should be checked in advance to insure that they are all available.

1. Instruct students to open the file named **CAUSES.8xv**. This will open the StudyCards™ Creator software package. The first two cards in the stack contain instructions for the activity.



2. After the activity is explained, assign the students the Web sites that are listed in the stack, beginning with the third card, **Website 1**. The Web site address can be cut and pasted into the Web browser.
3. Once students have read the instructions and opened their Web site, they should open a new file for their research by choosing the **New File** button. The students will be creating a self-check file for the TI-83 Plus device. Remind students that their first card should be the bibliographic entry for the site. Formatting information for Web sites is available at <http://www.dianahacker.com/resdoc/humanities/list.html#28>
4. The students should then create a StudyCard™ for each cause of the Great Depression explained in their source. The front of the card will be the name of the cause and the back will explain the cause.

Once students have completed their research, they should download their research to their handheld by connecting their TI-83 Plus to the computer using a TI-GRAPH LINK™ cable. The students should then choose the Send To Device  button on the tool bar to send the stack to the device.

### ***After the Activity***

The class will debrief their research using the StudyCards™ stack that they created. This activity does not require the computer resources since the students have all their information on their handheld devices.

1. Begin by having a student explain one of the causes that they discovered in their research. Record the cause on the chalkboard or chart paper. As students discuss the cause, review how many students found the same cause and record this information on the board.
2. After all the causes that the students discovered are discussed and listed on the board, the next step is to group the causes together into categories. The list should be reducible to four or five categories.
3. Once categories are created, the students can turn the categories into organizing ideas for an essay that addresses the causes of the Great Depression.
4. Inform students that in the next activity they will research in depth one of the causes of the Great Depression—The Stock Market Crash of 1929.

## ***Student Resource Sheet***

Name: \_\_\_\_\_

### ***Internet Sources for Causes of the Great Depression***

Date: \_\_\_\_\_

1. Causes and Effects of the "Great Depression" by Mike Noble  
[http://oasis.bellevue.k12.wa.us/sammamish/ssstudies.dir/hist\\_docs.dir/grtdepression.mn.html](http://oasis.bellevue.k12.wa.us/sammamish/ssstudies.dir/hist_docs.dir/grtdepression.mn.html)
2. Why it happened  
[http://www.gliah.uh.edu/database/article\\_display.cfm?HHID=464](http://www.gliah.uh.edu/database/article_display.cfm?HHID=464)
3. America's Great Depression  
<http://www.amatecon.com/gd/gdcandc.html>
4. Causes of the Great Depression  
<http://www.korpios.org/resurgent/Causes.htm#keynesianism>
5. The Main Causes of the Great Depression  
<http://www.geocities.com/CapitolHill/Senate/6854/greatdep.html>
6. Overview: The Great Depression  
<http://www.marist.edu/summerscholars/96/ovpe.htm>
7. Why was the Great Depression a disaster waiting to happen?  
[http://www.socialstudieshelp.com/Lesson\\_83\\_Notes.htm](http://www.socialstudieshelp.com/Lesson_83_Notes.htm)
8. Causes of the Great Depression  
[http://econc10.bu.edu/Ec341\\_money/Papers/Carroll\\_paper.htm](http://econc10.bu.edu/Ec341_money/Papers/Carroll_paper.htm)
9. The Great Depression and the New Deal  
<http://www.jmu.edu/madison/teach/burson/depression.htm>
10. Slouching Towards Utopia?: The Economic History of the Twentieth Century (Challenging resource for highly able students)  
[http://econ161.berkeley.edu/TCEH/Slouch\\_Crash14.html](http://econ161.berkeley.edu/TCEH/Slouch_Crash14.html)
11. Great Depression  
[http://www.wikipedia.org/wiki/Great\\_Depression](http://www.wikipedia.org/wiki/Great_Depression)
12. Timeline of the Great Depression  
[http://www.hyperhistory.com/online\\_n2/connections\\_n2/great\\_depression.html](http://www.hyperhistory.com/online_n2/connections_n2/great_depression.html)
13. Outline of American History  
[http://odur.let.rug.nl/~usa/H/1994/ch9\\_p8.htm](http://odur.let.rug.nl/~usa/H/1994/ch9_p8.htm)

14. Agricultural Tenancy in 1930s America (Addresses farming causes)  
[http://history.hanover.edu/hhr/hhr93\\_4.html](http://history.hanover.edu/hhr/hhr93_4.html)
15. Gallery Six: The Great Depression  
<http://hoover.archives.gov/exhibits/Hooverstory/gallery06/gallery06.html>
16. The Causes of the Great Depression  
<http://www.arts.unimelb.edu.au/amu/ucr/student/1997/Yee/depression.html>
17. The Great Depression  
<http://www.doheritage.state.pa.us/documents/greatdepression.asp>
18. The Great Depression and the New Deal  
<http://us.history.wisc.edu/hist102/lectures/textonly/lecture19.html>
19. The Great Depression  
<http://minneapolisfed.org/econed/essay/topics/topic01.cfm>
20. The Great Depression: America's Loss  
[http://www.newtechhigh.org/gallery/samples/2000/myk\\_browne/pages/great\\_depression/depression\\_intro.htm](http://www.newtechhigh.org/gallery/samples/2000/myk_browne/pages/great_depression/depression_intro.htm)

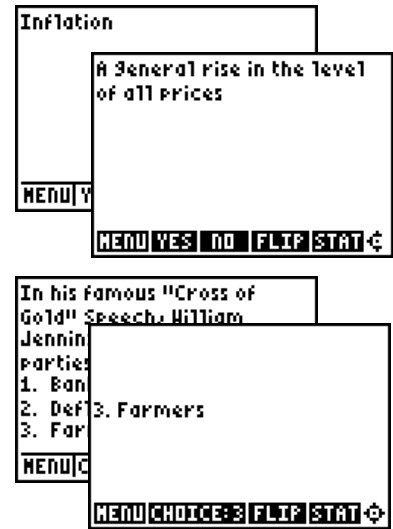
## Using StudyCards™ Creator

StudyCards™ Creator allows you to create stacks of cards that can be displayed on a TI device. After installation, the creator can be accessed from the TI Connect™ Utility screen.



1. Begin by deciding what type of stack will meet the students' needs. There are two general types of stacks:

|                  |   |
|------------------|---|
| Self Check*      | Create an index card that students can view on their device, flipping the card to access more information or check their understanding.   |
| Multiple Choice* | Allows the student to choose an answer and then receive immediate feedback. If the student answer was incorrect, the correct answer is displayed and the question is shuffled to the bottom of the deck to reappear until answered correctly. |



- \* Both types can be created with levels of difficulty requiring students to master easier questions before moving on to more difficult ones.

2. Once the type of stack is chosen, the creator screen opens:

The screenshot shows the TIStudyCards software interface for creating a stack. The window title is "TIStudyCards - [Stack2]". The menu bar includes File, Edit, View, Tools, Actions, Window, and Help. The toolbar contains icons for file operations and editing. The main area is divided into several sections:

- Stack Information:** Stack Type: Multiple-Choice (TI-83 Plus / Silver Edition); Stack Title: [text input]; Version No: [text input]; Created By: [text input]; Score Values (0 - 100): [0] [0] [0]; Right (+): [text input]; Wrong (-): [text input]; Skip (-): [text input]; Create Date: [text input].
- Card List:** A list on the left shows "Card 1 of 1" with a "1:" next to it.
- Card Editor:** Name of Card: [text input]; Front of Card: [text input]; Back of Card: [text input]; Screen 1 of 1 (for both sides). Below the text areas are fields for "Number of choices:" (value: 1) and "The correct answer is:" (value: 1).
- Navigation:** A "NUM" button is at the bottom right.

Annotations with arrows point to various parts of the interface:

- List of Cards:** Points to the card list on the left.
- Front of Card:** Points to the "Front of Card" text input area.
- Answer information for multiple-choice questions:** Points to the "Number of choices:" and "The correct answer is:" fields.
- Press to move to a new card:** Points to the right arrow button between the front and back of the card.
- Sends the cards to the device:** Points to the "NUM" button at the bottom right.
- Back of Card:** Points to the "Back of Card" text input area.