



TI Connect™ CE App for Chrome OS™

Legal Information

Important Information

Texas Instruments makes no warranty, either expressed or implied, including but not limited to any implied warranties of merchantability and fitness for a particular purpose, regarding any programs or book materials and makes such materials available solely on an “as-is” basis.

In no event shall Texas Instruments be liable to anyone for special, collateral, incidental, or consequential damages in connection with or arising out of the purchase or use of these materials, and the sole and exclusive liability of Texas Instruments, regardless of the form of action, shall not exceed the purchase price of this product. Moreover, Texas Instruments shall not be liable for any claim of any kind whatsoever against the use of these materials by any other party.

© 2003 - 2021 Texas Instruments Incorporated

Chromebook™ notebook computer, Chrome OS™ operating system, and Google Drive™ online storage service are trademarks of their respective owners.

Contents

Overview	1
TI Connect™ CE App for Chrome OS™	1
Introduction to the TI Connect™ CE App for Chrome OS™	2
Using the TI Connect™ CE App for Chrome OS™	2
Parts of the TI Connect™ CE App for Chrome OS™	3
Using Screen Capture	5
Parts of Screen Capture	6
Capturing and Using Screens	7
Saving Calculator Screens as Files	7
Using Calculator Explorer	9
Parts of Calculator Explorer	10
Copying Calculator Files to the Computer	11
Sending Files to Connected Calculator	11
Deleting Calculator Files	12
Maintaining Your Calculator	13
Updating the Calculator Operating System	13
Getting Calculator Information	14
General Information	15
Online Help	15
Contact TI Support	15

Overview

TI Connect™ CE App for Chrome OS™



TI Connect™ CE App for Chrome OS™ provides the following key benefits & features:

- Connect a single TI-84 Plus CE graphing calculator to a Chromebook™ notebook computer
- Send/receive calculator files (Programs, Lists, etc.) to/from your connected graphing calculator
- Quickly capture calculator screens
 - View screens with or without added borders
 - View screens as thumbnails or in a slide show
 - Copy screens for use in in homework or presentations
- View calculator information including ID, Operating System version, and available memory
- Save calculator files and screen captures locally or to your Google Drive™ online storage service folder
- Send the TI-84 Plus CE Operating System (OS) file to your connected calculator
 - Please do not disconnect your USB calculator to computer cable during an OS update
 - This feature does not support the 84CE Bundle file

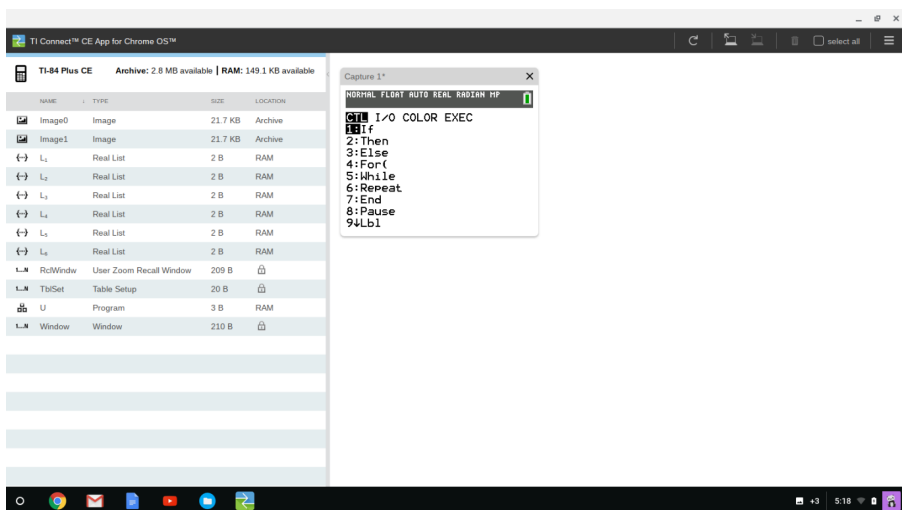
Introduction to the TI Connect™ CE App for Chrome OS™

The TI Connect™ CE App for Chrome OS™ makes exchanging information between your TI-84 Plus CE graphing calculator and your Chromebook™ notebook computer quick and easy.

TI Connect™ CE is also available for PC and Mac with more features for connected TI-84 Plus Family of calculators.

Using the TI Connect™ CE App for Chrome OS™

The TI Connect™ CE App for Chrome OS™ contains tools you can use to exchange information between your calculator and your computer.

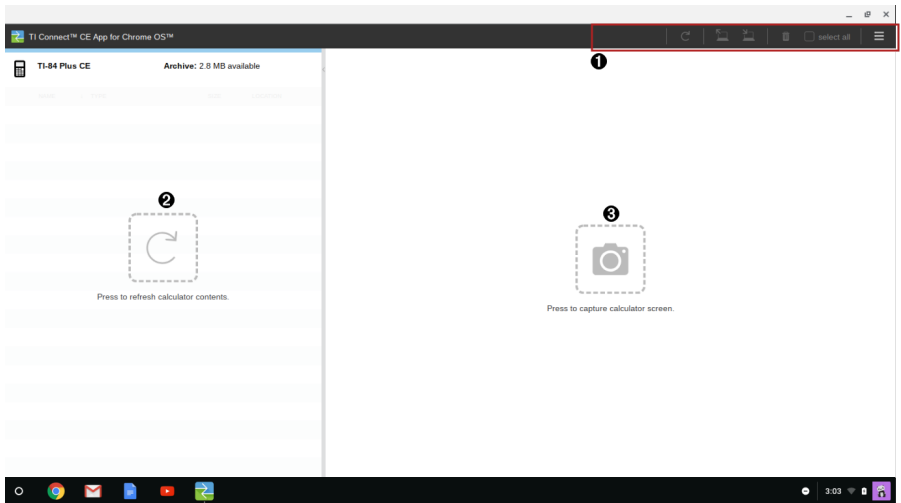


The TI Connect™ CE App for Chrome OS™ includes:

- **Calculator Explorer:** allows you to manage calculator content
- **Screen Capture:** allows you to capture your calculator screen to display your work, drag the screen to a document, and/or save screen captures

Parts of the TI Connect™ CE App for Chrome OS™

Depending on the panel focus, the toolbar will display as shown. Click on either panel and a blue bar will display at the top of the panel in focus.



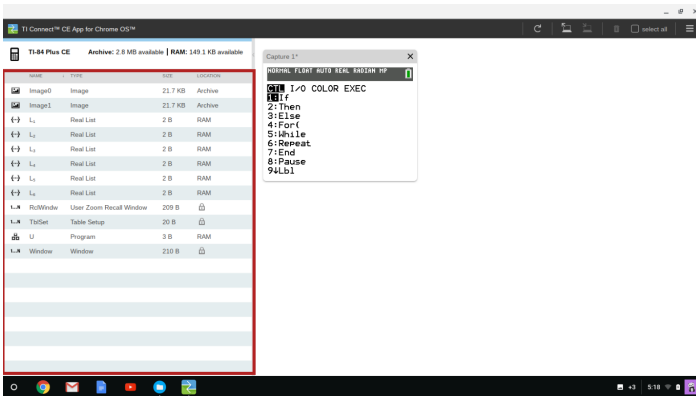
- 1** **Calculator Explorer Toolbar** - Use these icons to manage computer files and screens.



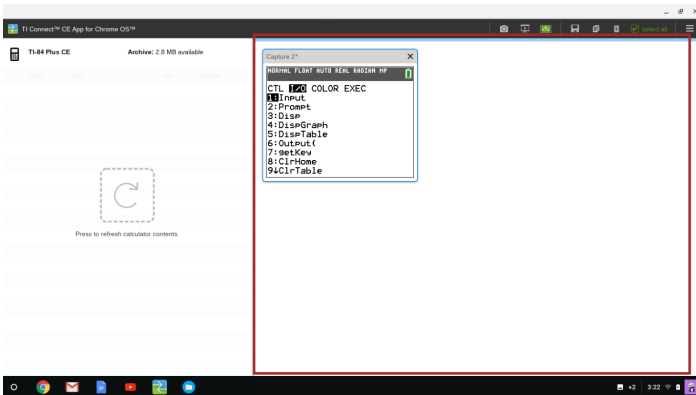
- Screen Capture Toolbar** - Use these icons to manage screen capture(s).



- 2** **Calculator Explorer Panel** - Use this panel to view and manage calculator files and programs.

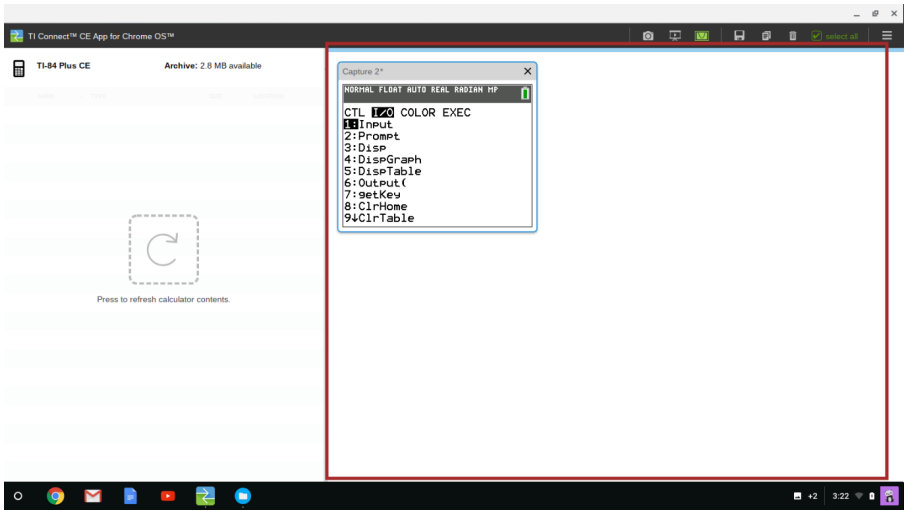


- 3** **Screen Capture Panel** - Use this panel to view and manage calculator screen captures.



Using Screen Capture

Screen Capture allows you to manage calculator screen captures.

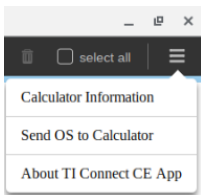


Parts of Screen Capture

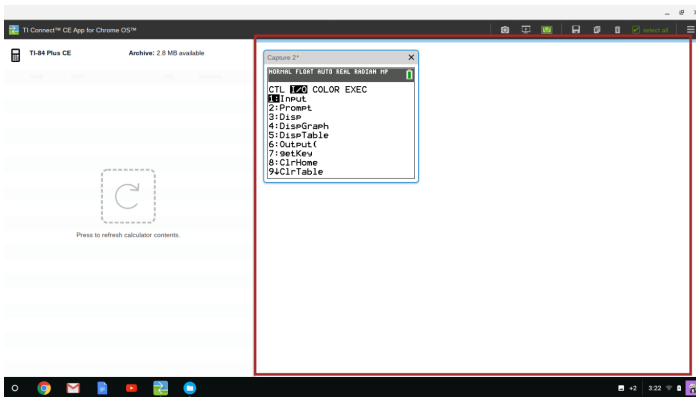
Screen Capture Toolbar - Click these icons to capture, view slide show, toggle screen borders, save, copy, and delete screen capture(s).



- 1 Take a screen capture of this calculator.
- 2 Show slide show of screen capture(s).
- 3 Toggle screen border on/off for selected screen capture(s).
- 4 Save selected screen capture(s) to the file system.
- 5 Copy selected screen capture(s) to the clipboard.
- 6 Delete selected item(s).
- 7 Select All or None items in the current view.
- 8 **Menu icon** - click the menus icon to select:



Screen Capture Panel - View screen captures in the Screen Capture Panel.




Capturing and Using Screens

In Screen Capture, you can capture and view screens from your calculator.

Before you Begin

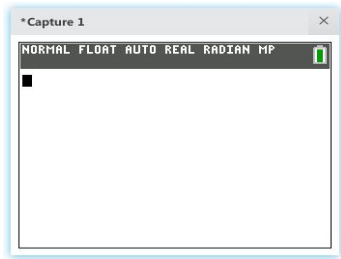
Connect the calculator to the computer and make sure it appears in the Calculator List Panel.

To Capture Calculator Screens

1. Display the screen on your calculator that you want to capture.
2. Click  in the Screen Capture Toolbar.

Saving Calculator Screens as Files

Screen Capture lets you save a screen to your computer as a *.png file.





Note: The asterisk at the beginning of an image name indicates that the image is not saved.

To rename a screen capture

1. Click on screen title bar and edit with the new name. When saved, this name will be the computer file name.

To save a new screen capture as a PNG file

1. Click the image.
2. Click .
3. Navigate to a desired save location.
4. Change the file name if needed.

5. Click .

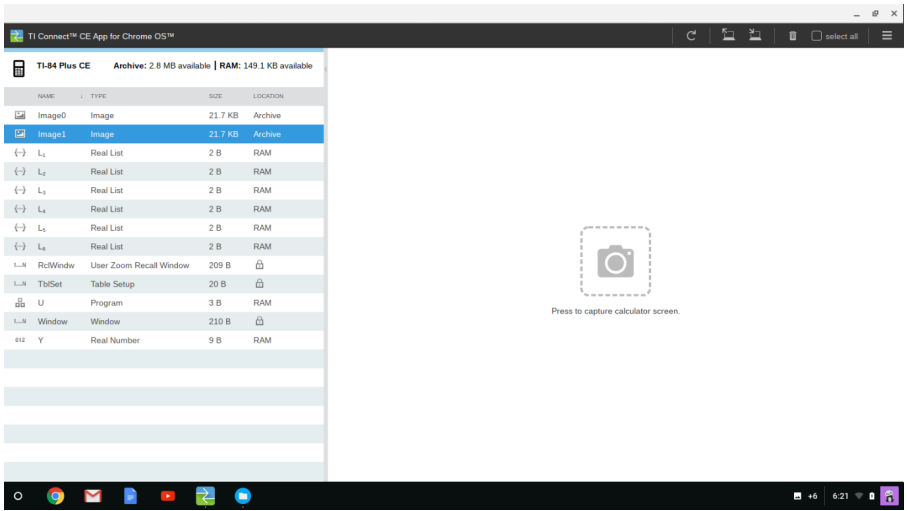
Notes:

When saving multiple screen captures, always check your Google Drive to validate all screens were saved.

Please use copy and paste of a screen capture to your document. Dragging of a screen capture is not supported. Borders will not paste to your documents.

Using Calculator Explorer

Calculator Explorer allows you to manage calculator content.

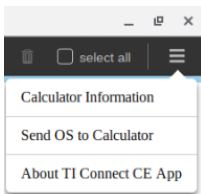


Parts of Calculator Explorer

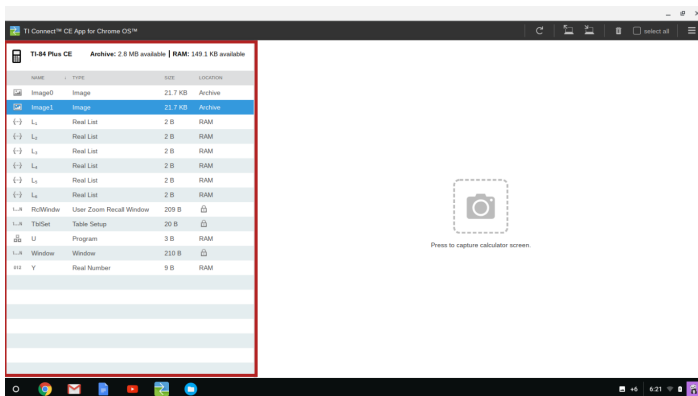
Calculator Explorer Toolbar - Click these icons to refresh, add, send, transfer, or delete files from your calculator.



- 1 Refresh the view of the calculator content
- 2 Add content from your computer to the connected calculator.
- 3 Send selected content to computer.
- 4 Delete the selected item(s).
- 5 Select **All** or **None** items in the current view.
- 6 **Menu** icon - click the menus icon to select:



Calculator Explorer Panel - Select files you want to manage from this panel.



Copying Calculator Files to the Computer

You can copy most data, files, and programs from your calculator to your computer as a content backup, to send to others.


Note:

- Saving Apps to your computer is not support at this time.

To copy a file from the calculator to the computer

1. Click on the file name to select it.




2. Click  or Copy and Paste the file into a folder on your computer or onto your desktop.

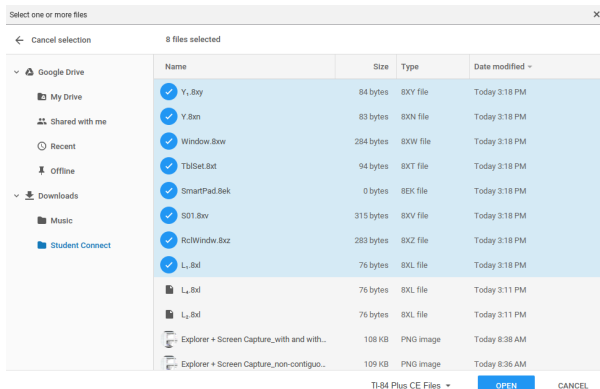
Sending Files to Connected Calculator

You can send files from the computer to the connected TI-84 Plus CE via TI Connect™ CE App for Chrome OS™.

Warning: Do not disconnect the cable during a transfer.

Send files to connected calculator

1. Click .
2. Select one or more files in the File Chooser.



3. Click .

4. Select or make adjustments to **FILE NAME**, **NAME ON CALCULATOR**, and **LOCATION** from dialog box.



- **FILE NAME:** This may differ from the **NAME ON CALCULATOR** depending on what you named the screen capture on your computer.
- **NAME ON CALCULATOR:** select the background image (it should be the default, but you may change the background image name using this menu).
- **LOCATION:** in the **LOCATION** field you may select **RAM** or **Archive**.

5. Click 


Notes:

- Use this process to update newly released Apps found at education.ti.com/downloads.
- Dragging files from your computer to calculator is not supported. Please select files and use "Send selected content to computer" from the toolbar.
- Also see the section, Updating the Calculator Operating System

Deleting Calculator Files

You can delete data, files, and programs from your calculator.

To delete files from the calculator

1. Click on the file in the Content Explorer Panel you want to delete.
2. Click .

Maintaining Your Calculator

Updating the Calculator Operating System


TI Connect™ CE App for Chrome OS™ lets you update the operating system for the TI-84 Plus CE.

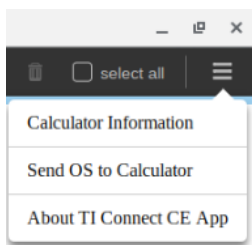
Before you begin

- Go to education.ti.com/downloads to find the latest TI-84 Plus CE OS file. The file name will be in this format: TI-84_Plus_CE-OS-x.x.x.xxxx.8eu
 - **Note:** The 84CE Bundle file update is not supported in TI Connect CE App for Chrome OS.
- Save off your calculator files in RAM to your computer. An OS update will delete your calculator files other than Archive. You can send them back to your calculator after the OS update process is complete.
- Make sure your calculator is turned on and securely connected to the computer.

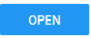
Warning: Do not disconnect the cable during a transfer.

To update graphing calculator operating systems

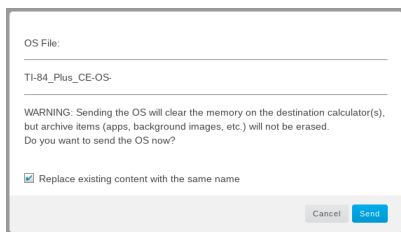
1. Click the **Menu** icon .
2. Select **Send OS to Calculator**.



The Chrome file browser opens.

3. Selects an OS file for your model of calculator stored on your computer.
4. Click  .

The **Send OS** dialog box opens.




5. Click .

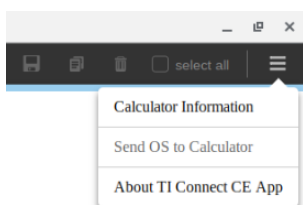
See Also: Sending Files to Connected Calculator

Getting Calculator Information

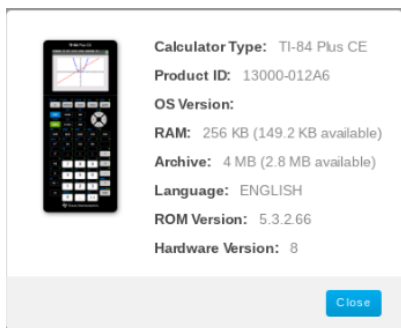
TI Connect™ CE App for Chrome OS™ allows you to get information about your calculator's type, product ID, OS Version, RAM, Archive, Language, ROM Version, and Hardware Version.

To view calculator information

1. Click the **Menu icon** .
2. Select **Calculator Information**.



Calculator information detail appears.



General Information

Online Help

education.ti.com/eguide

Select your country for more product information.

Contact TI Support

education.ti.com/ti-cares

Select your country for technical and other support resources.