

1 Unpack the Parts



TI-Navigator™ 3.2 Getting Started

Classroom Kit

- (1) USB Silver Edition Cable
- (2) CD-ROMs containing software and activities
- (1) AC9930 Power Adapter for Access Point or Network Hub
- (1) Access Point (shown with antenna extended)
- (1) USB Cable
- Installation Guide and Reference Guide

Student Kit

- (4) Network Connectors
- (1) AC9930 Power Adapter for Access Point or Network Hub
- (4) Network Hubs
- (4) Network Hub Clamps
- (1) Charging Bay
- (1) AC9940 power adapter for charging bay
- (16) Data Cables

Continued on back →

Important!

- The teacher's computer must have Windows® Vista Ultimate, Home Premium, Business, or Pro editions installed; or Windows® XP Professional (with Service Pack 1, 2, or 3); or Windows® 2000 (with Service Pack 4) operating system installed.
- You must have administrative rights to install software on the computer.
- Before installing TI-Navigator™ software, you must install TI Connect™ 1.6 from the CD.
- You must upgrade the operating system on your TI calculators to 1.19 or higher (TI-83 Plus), 2.41 or higher (TI-84 Plus), or 1.90 or higher (TI-73 Explorer™). For more information, see the *Installation Guide*.
- For detailed set-up instructions, see the *Installation Guide*. For quick access to information while using the software, see the *TI-Navigator™ Reference Guide* or the TI-Navigator™ Help.

Contact TI for additional help

On the Web education.ti.com/support

By e-mail ti-navigator@ti.com

By phone 1-866-TI NAVIGATOR
(1-866-846-2844)

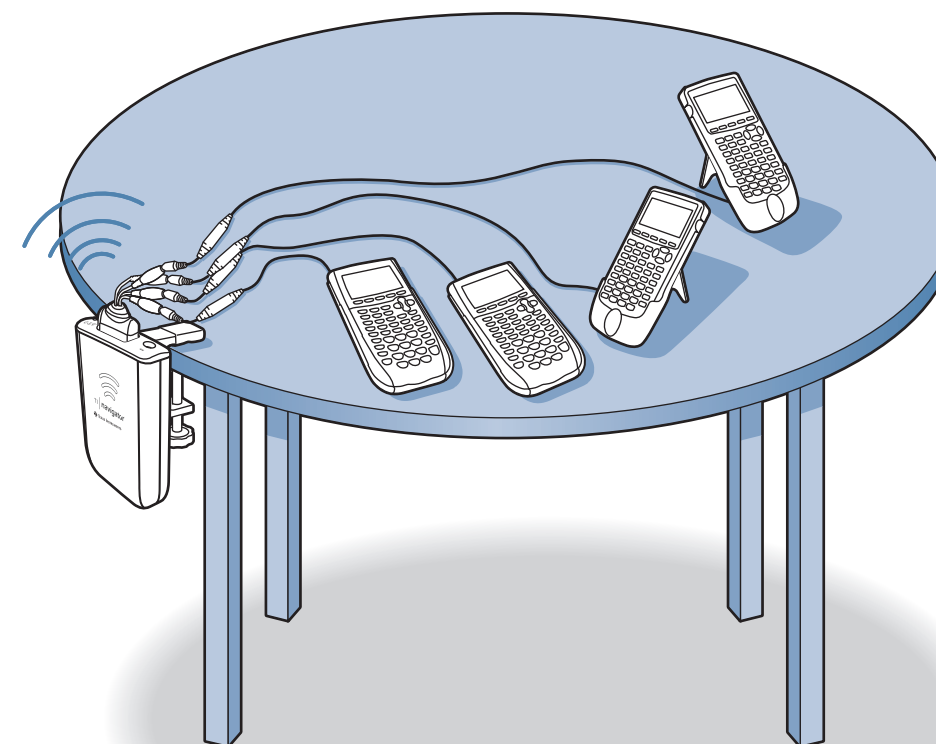
Texas Instruments
7800 Banner Dr.
Dallas, Texas 75251

The TI-Navigator™ System Overview

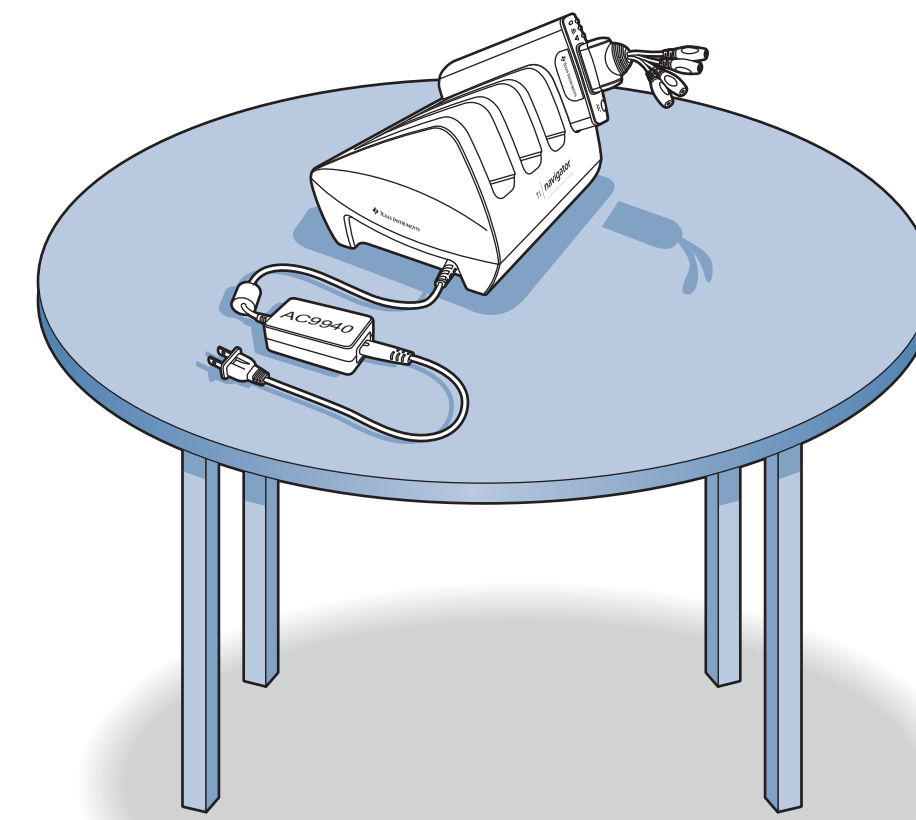
Access Point connects to teacher's computer through USB cable.



Network Hubs communicate with access point. TI calculators connect to hubs.



Charging Bay charges network hubs when they are not in use.



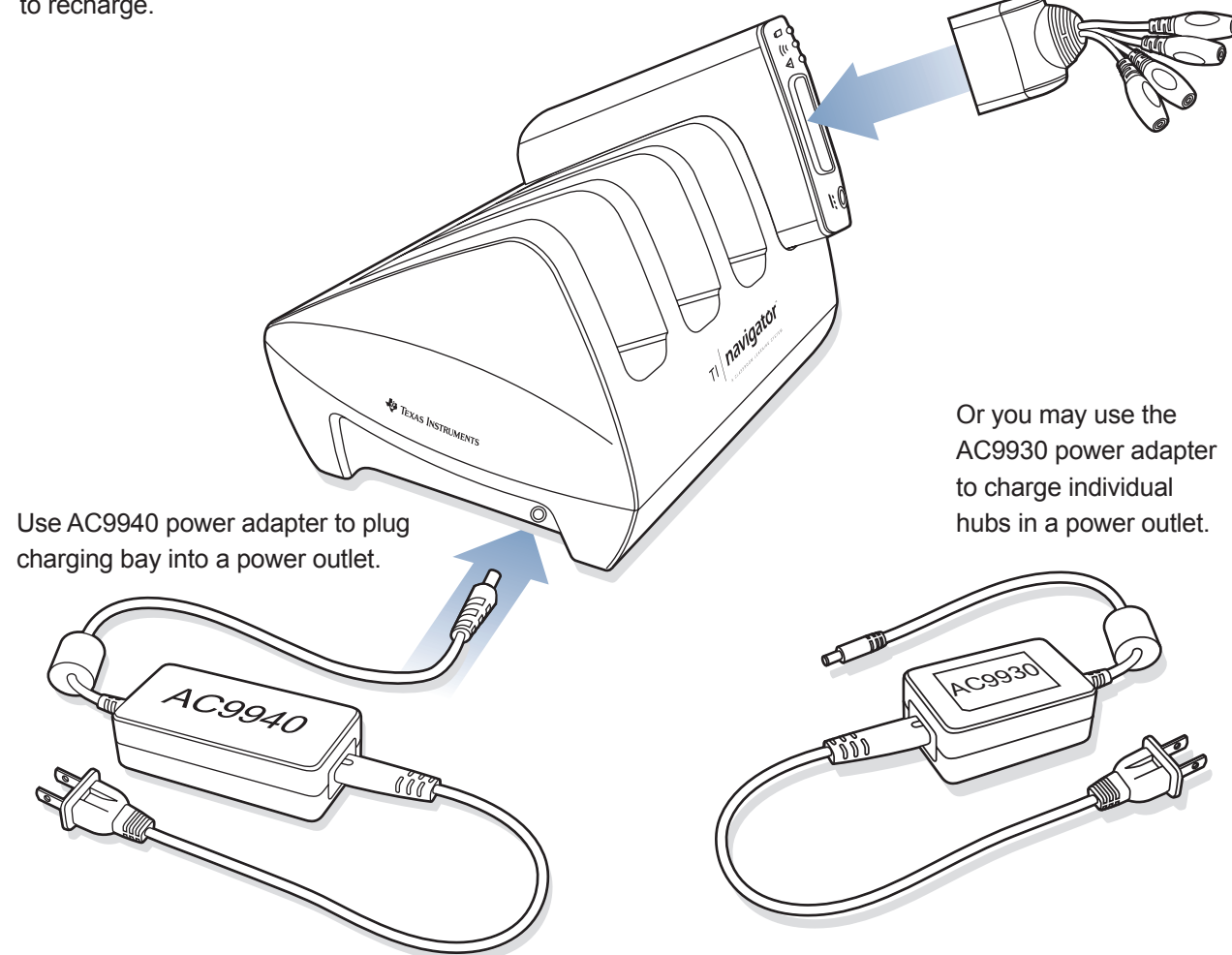
TI-Navigator™ 3.2 Getting Started poster

For detailed instructions, see the *Installation Guide*.

2 Assemble and charge the hubs

Place hubs in charging bay to recharge.

Connect network connectors onto hubs.



Hub batteries are already charged when shipped, but you should charge them overnight before use.

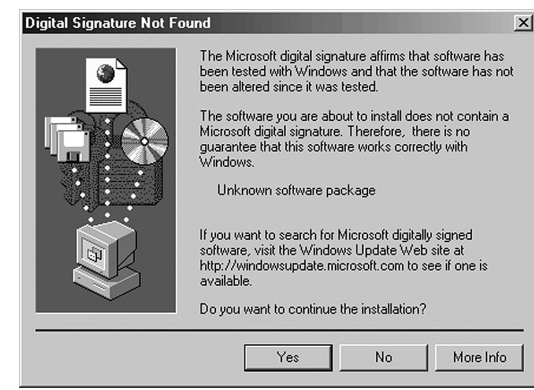
3 Install TI-Connect™ and TI-Navigator™ software

- Insert the software installation CD in the CD-ROM drive.
 - When the window opens, click the **Computer Software** button, and install TI-Connect™ 1.6 software on the computer.
 - Restart your computer, and open the CD again.
 - Next, click **TI-Navigator™ Software**, and follow the instructions on the screen. Click **Install TI-Navigator** to install the software.
- When the installer program asks for it, type the **System ID** for your TI-Navigator™ system. You can find the System ID inside the CD case.
 - Wait and follow the instructions on the screen.

TI-Navigator™ System ID
48z6-co2j-cyms-qol2x
(Sample)



If you see this message while installing, click **Yes**. The message does not mean there is a problem.



- Restart your computer, and open the CD again.
- Next, click **TI-Navigator™ Software**, and follow the instructions on the screen. Click **Install TI-Navigator** to install the software.

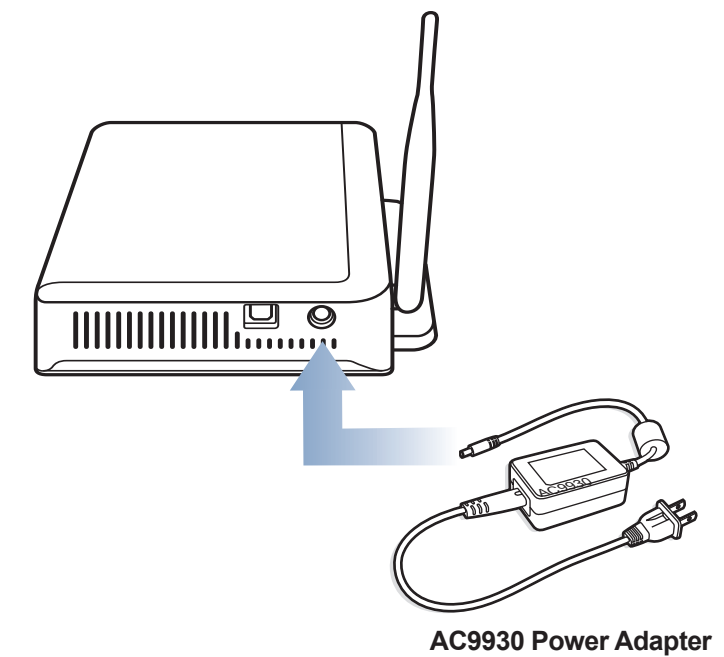
4 Set up your network

Please follow all the steps as instructed on the screen. This poster provides an overview; the *Installation Guide* provides details.

- When you are prompted to start the Network Setup wizard, click **OK**.
- Follow the instructions on the screen. Click **Next** or **Finish** as you complete each screen in the wizard.
- Plug the power adapter into the Access Point.

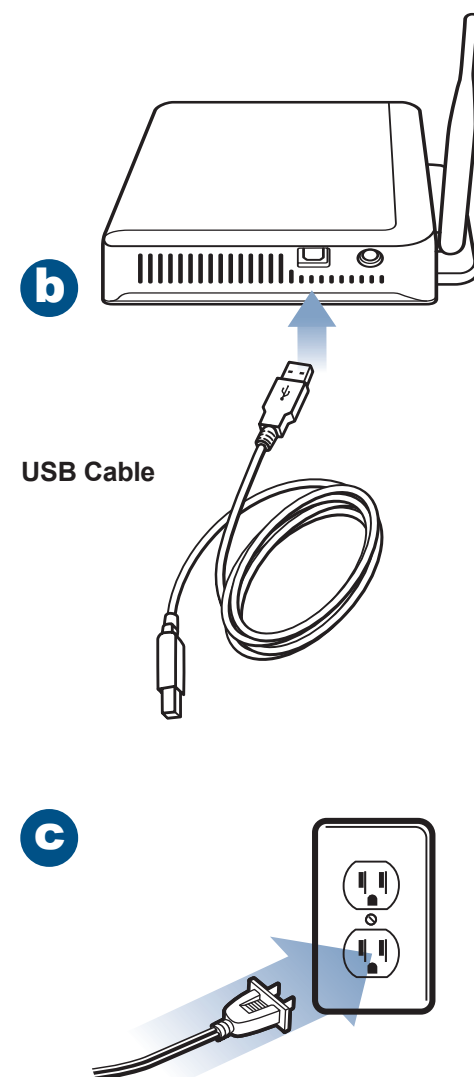


C



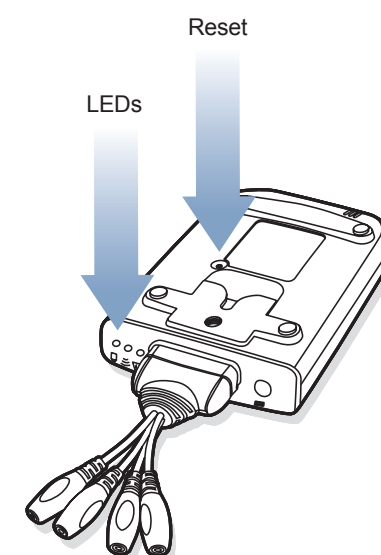
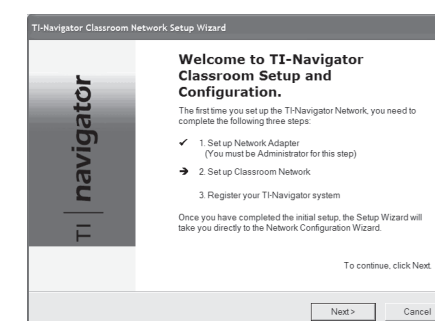
5 Set up your network (continued)

- Continue to follow the instructions on the screen.
- Connect the USB cable to the access point.
- Plug the access point's power adapter into a power outlet.
- Connect the USB cable from the access point to the computer's USB port.



6 Activate access point and hubs

- Follow the wizard's instructions to activate the **access point**.
- Next, you will add the hubs. When prompted, insert a ball point pen into the hole at the back of each hub to press and hold the **Reset** button. The hub's LEDs begin to flash amber.
- Hold the **Reset** button until all three LEDs show solid amber. This may take up to 10 seconds. After you reset each hub, it may take a few seconds for the hub's ID to be added to the list.



For detailed instructions, see the *Installation Guide*.

7 Reminders and next steps

- For detailed set-up instructions, see the *Installation Guide*.
- The driver for the USB Silver Edition cable is included on the TI-Navigator™ software installation CD.
- Four required Apps must be installed on all the calculators on the TI-Navigator™ network: NavNet, θ AlgACT, θ navstk, and LearnChk. Use the App Transfer utility under the Tools tab in the TI-Navigator™ software.
- LearningCheck Creator is an important software tool included on the CD. You must install it separately from the other software.
- You must upgrade the operating system on your TI calculators to 1.19 or higher (TI-83 Plus), 2.41 or higher (TI-84 Plus), or 1.90 or higher (TI-73 Explorer™). See the *Installation Guide* for more information on upgrading the calculator operating system. (An operating system may take ten minutes per calculator to transfer and install.)
- For quick access to information while using the software, see the *TI-Navigator™ Reference Guide* or the TI-Navigator™ Help.