

TI Connect™ CE Software



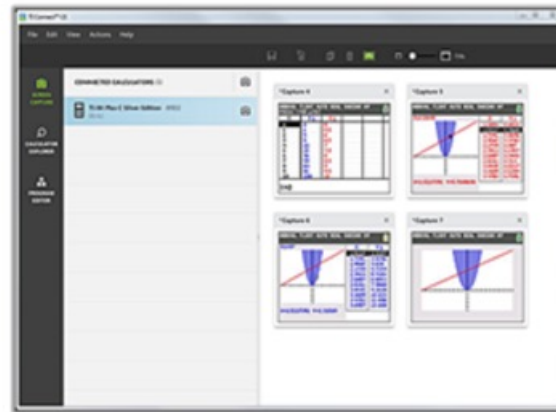
Updated for the TI-84 Plus family

Download the latest version (5.6, released Sept 2020) at this [link](#).
Note: Windows users download .EXE file for individual installation.



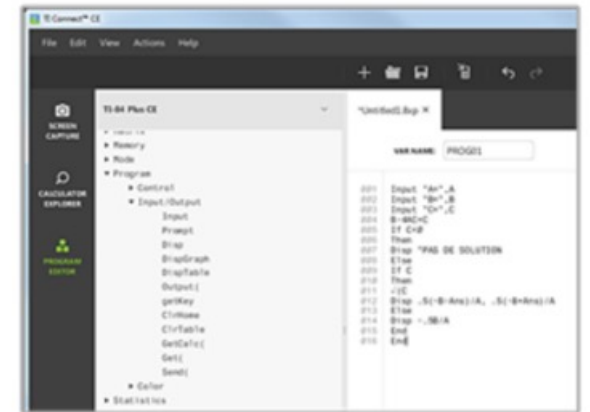
Calculator Explorer

Connect to multiple graphing calculators at once to update your graphing calculator's Operating System (OS), transfer data, download Calculator Software Applications (apps) and edit and upload programs.



Screen Capture

Take and manage screen captures from your connected graphing calculator quickly and simply. The Screen Capture workspace also enables you to convert images to be used as a background on your calculator.



Program Editor

Create and edit calculator TI Basic programs using the Program Editor workspace. Quickly send programs directly to your connected calculator.

TI Connect™ CE Software opening screen.

When you open the program you will see the screen below.

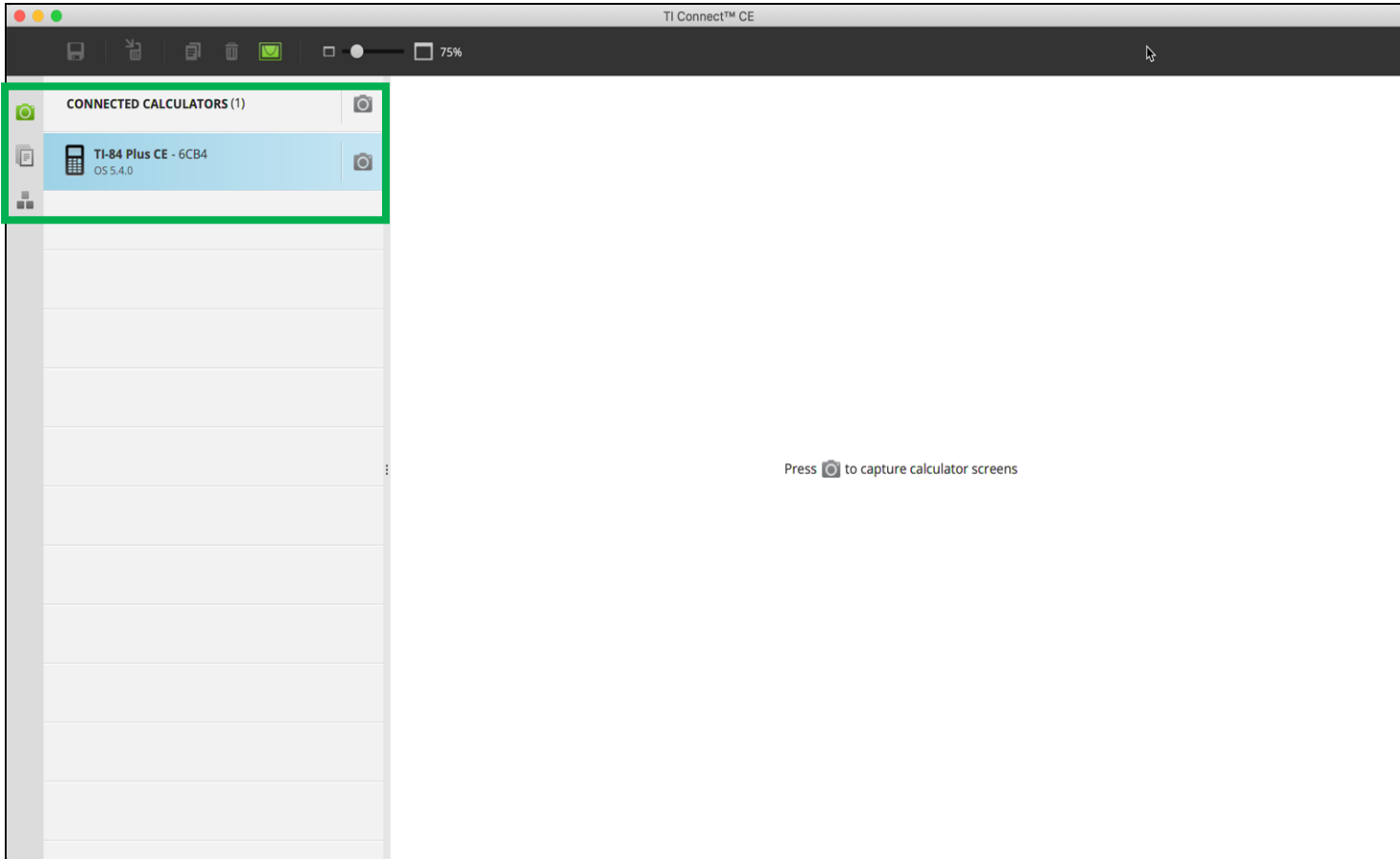
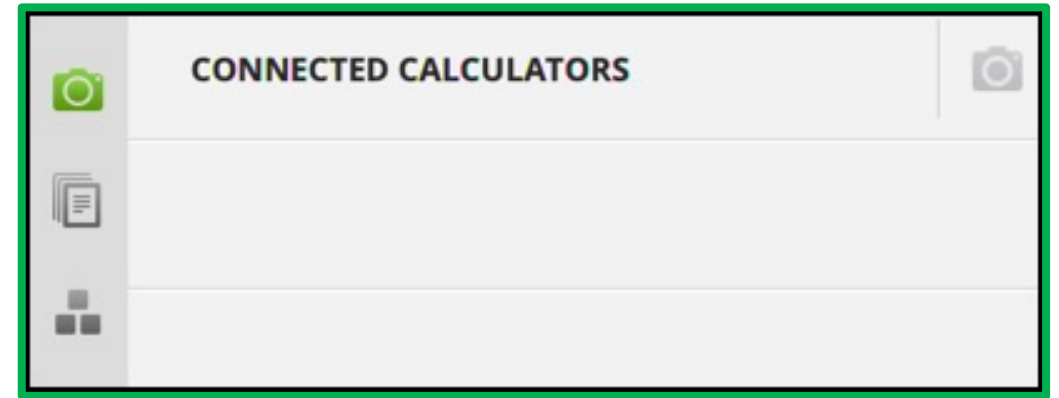
For many of the uses of of the program you will connect the calculator to the computer with a USB Standard to USB Mini cable.

There are three primary modes for the TI Connect CE software. The modes are selected by clicking on the associated icon.

Screen Capture

Calculator File Explorer

Program Editor

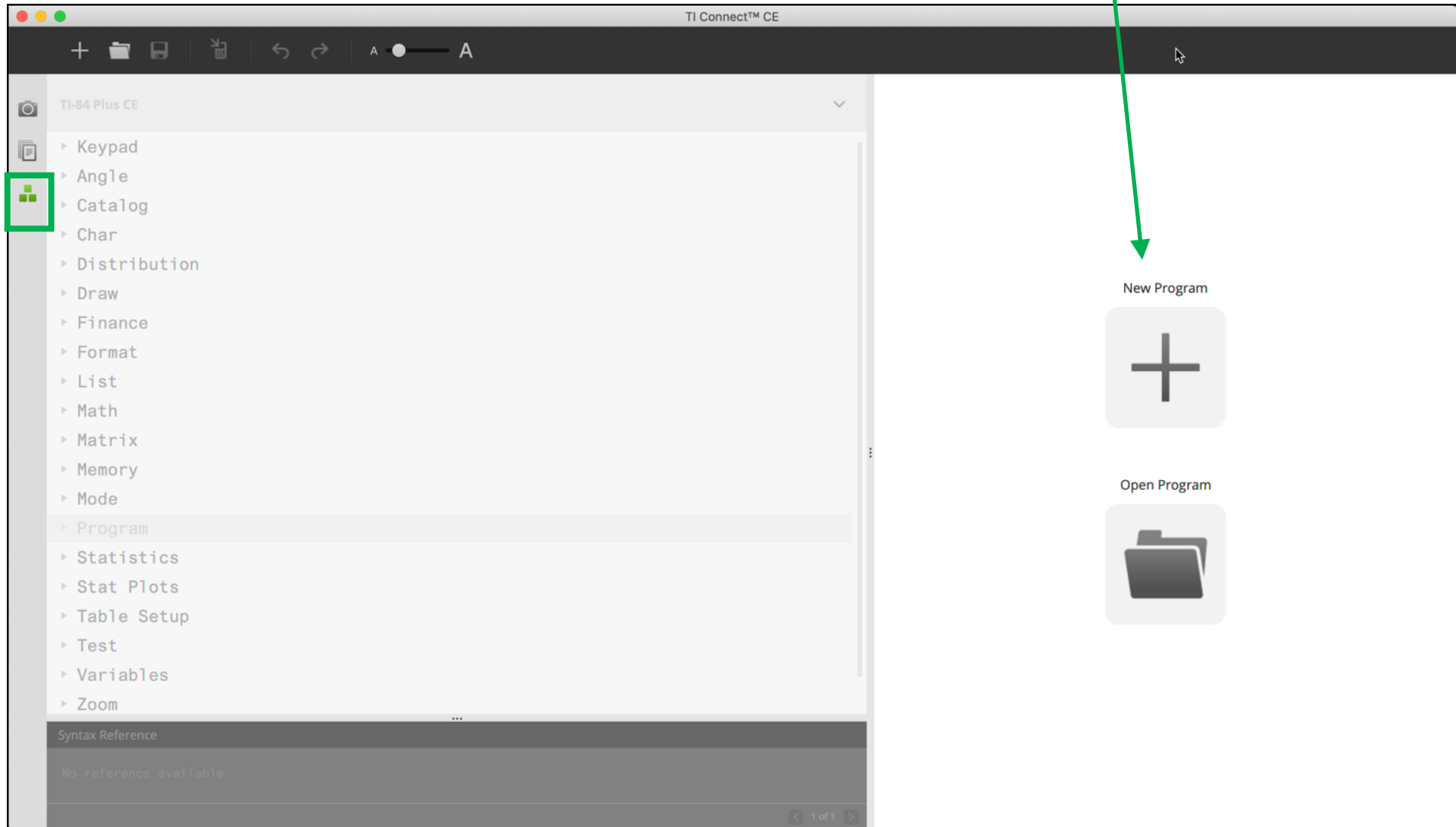


Topics in this document

- Editing a program
- Sending a program to calculator from the program editor
- Uploading a file from calculator to computer using Calculator file Explorer
- Downloading a file from the computer to a calculator using Calculator file Explorer
- Capturing a screen from the calculator
- Updating the calculator operating system and apps using an OS/Bundle

Editing a program

1. Click on Program Editor



2. Click on New Program or open existing program on computer.

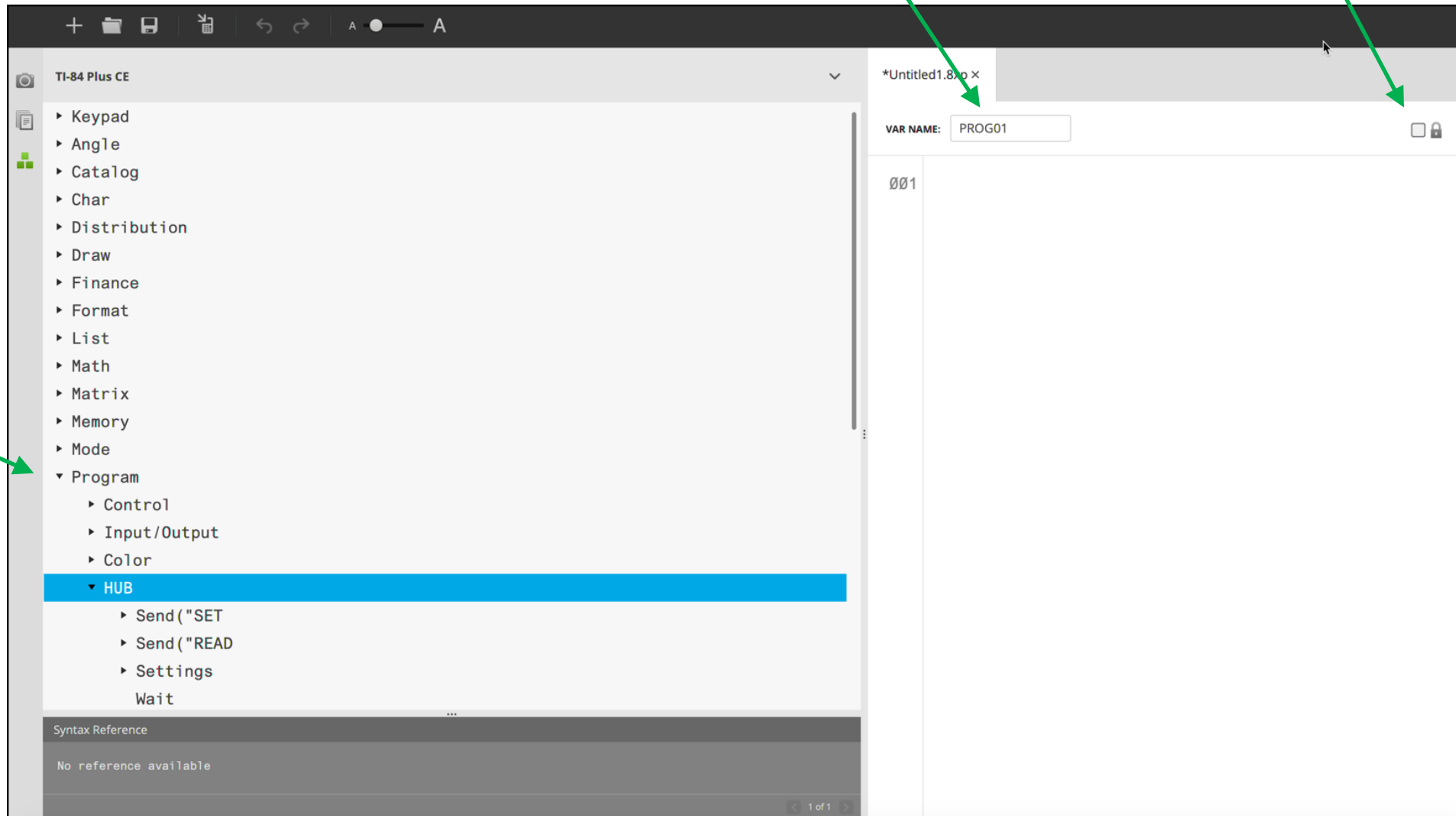
Save program to computer.

Enter program name that will appear on the calculator program menus.

Check box option to block editing of program on calculator.

Enter program commands using menus and by typing.

Click on twist menus to see options.



Program commands.

The screenshot shows the TI-84 Plus CE program editor interface. On the left, a tree view under 'Program' lists various control and command options. The 'End' option is highlighted. On the right, the 'VAR NAME' field is set to 'SQUARE'. Below this, a code editor displays the following program commands:

```
001 Send("CONNECT RV")
002 For(N,1,4)
003 Send("RV FORWARD 5")
004 Send("RV RIGHT ")
005 End
```

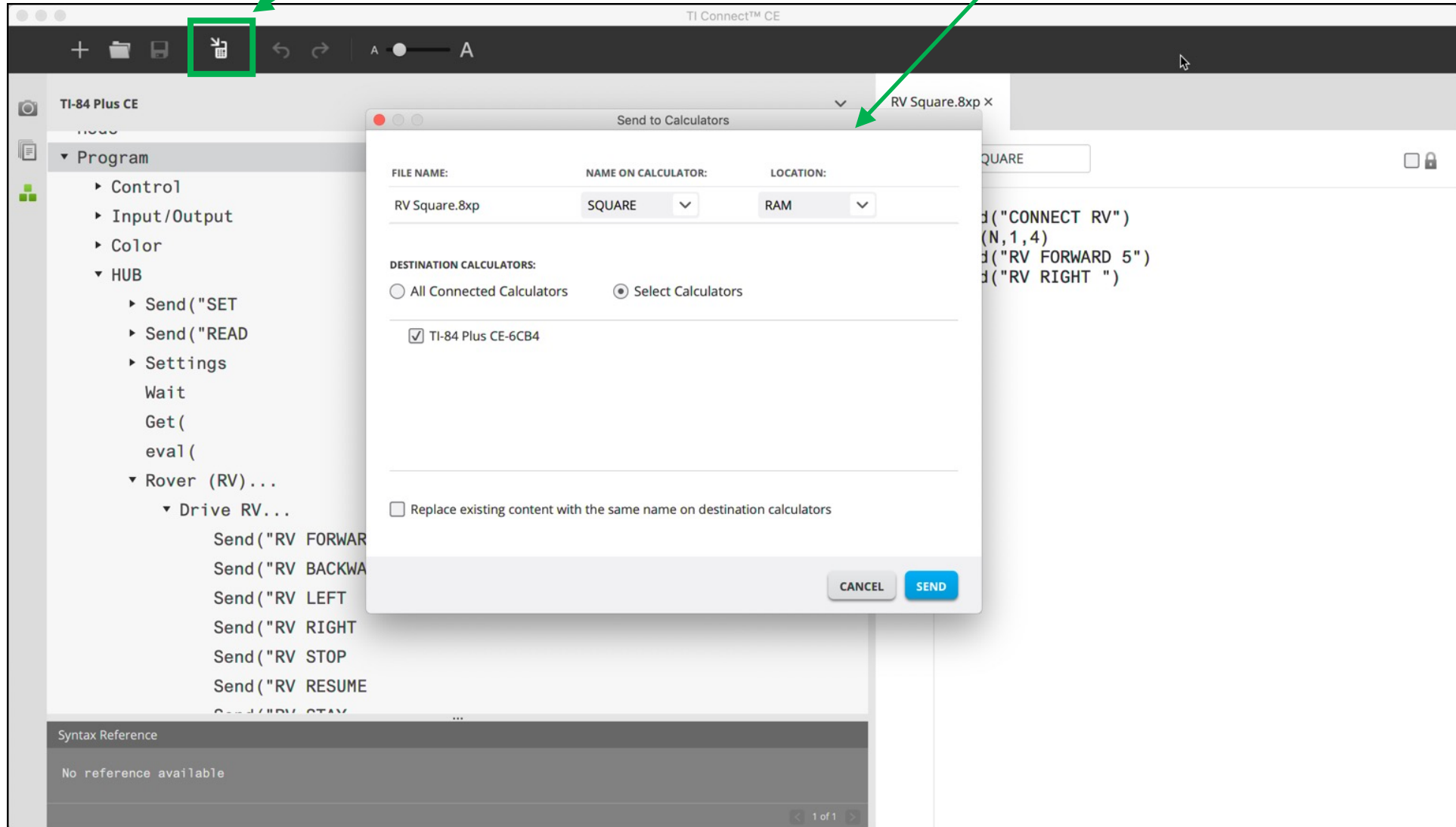
A green arrow points from the text 'Program commands.' to the 'VAR NAME' field.

Sending a program to calculator from the
program editor

1. Connect calculator to USB port of computer.

2. Click here to save program to calculator

3. Use dialogue box to send file to the calculator.



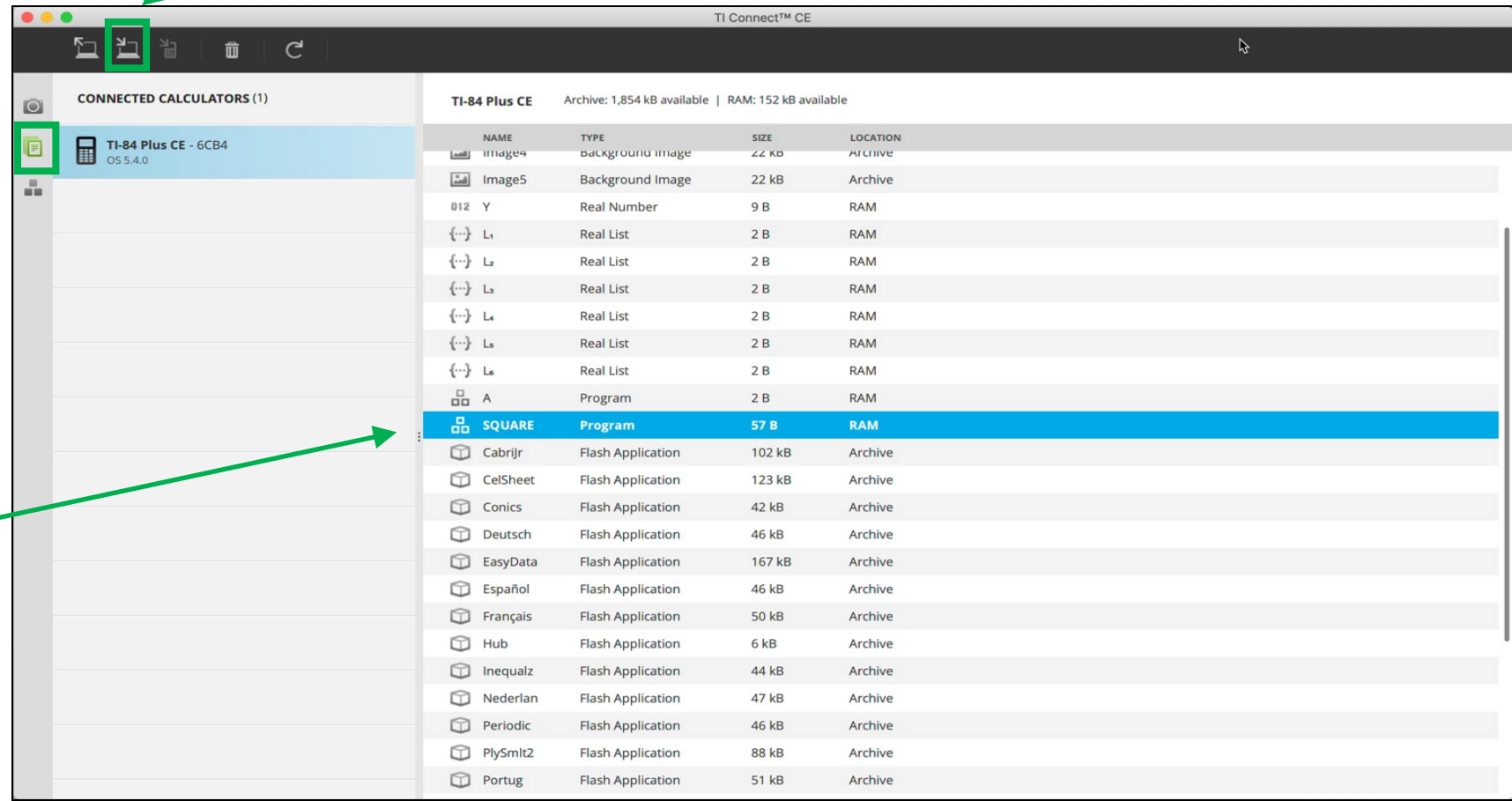
Uploading a file from calculator to
computer using Calculator file Explorer

1. Connect calculator to USB port of computer.

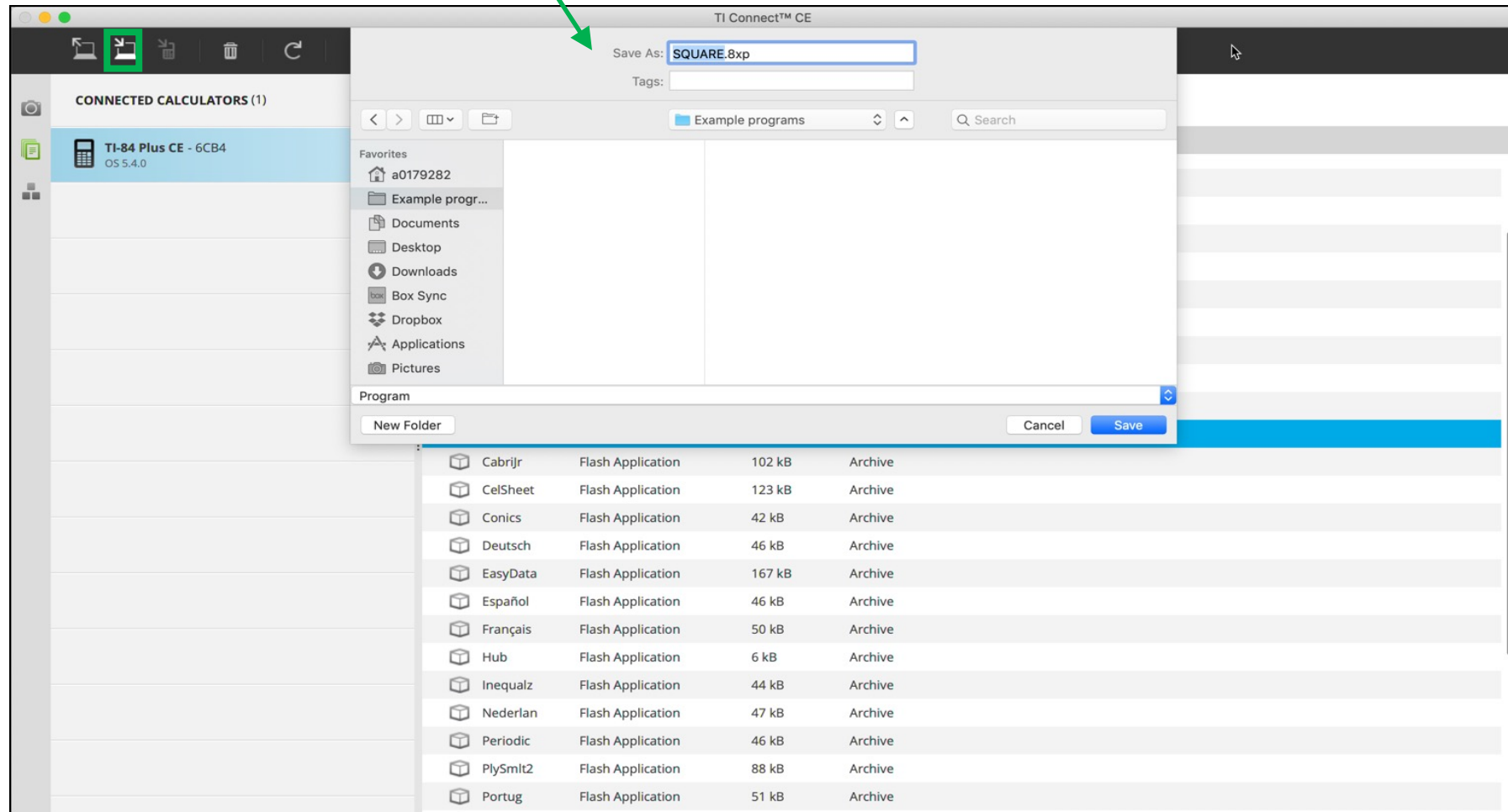
2. Click on Calculator file Explorer

4. Click on upload to computer icon.

3. Click to select file in calculator memory to upload



5. Use dialogue box to save file to computer.



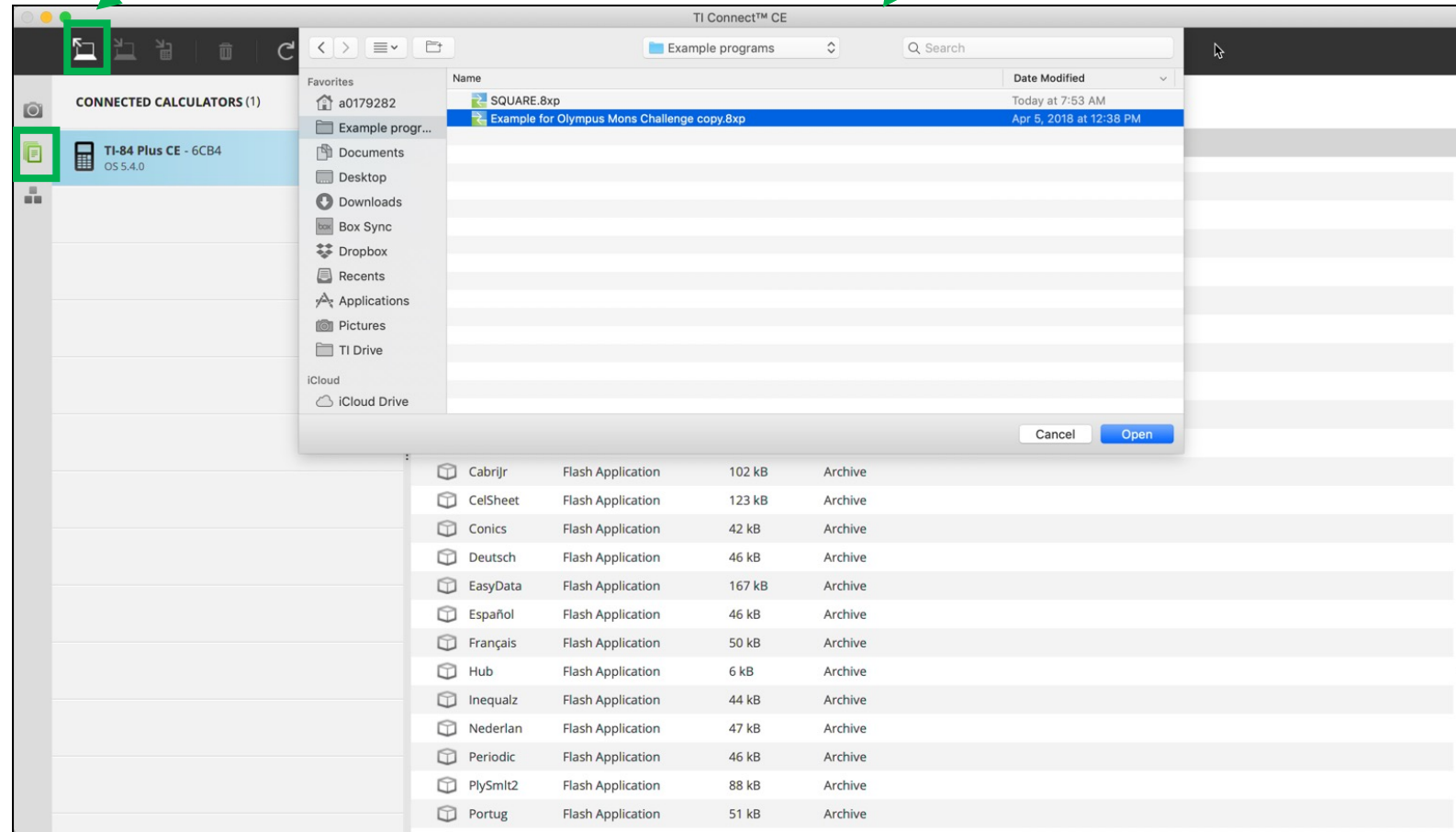
Downloading a file from the computer to
a calculator using Calculator file Explorer

1. Connect calculator to USB port of computer.

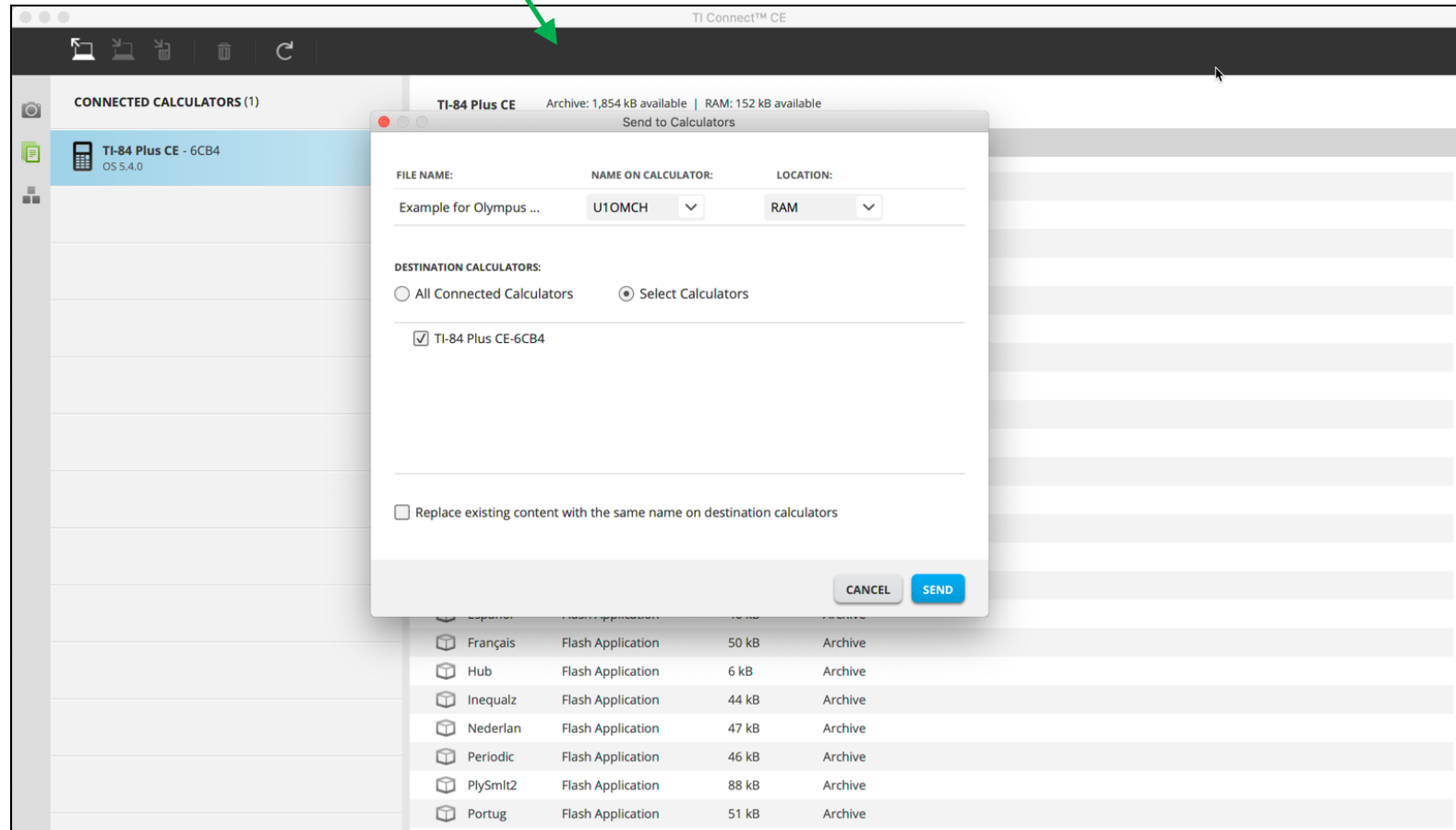
2. Click on Calculator file Explorer

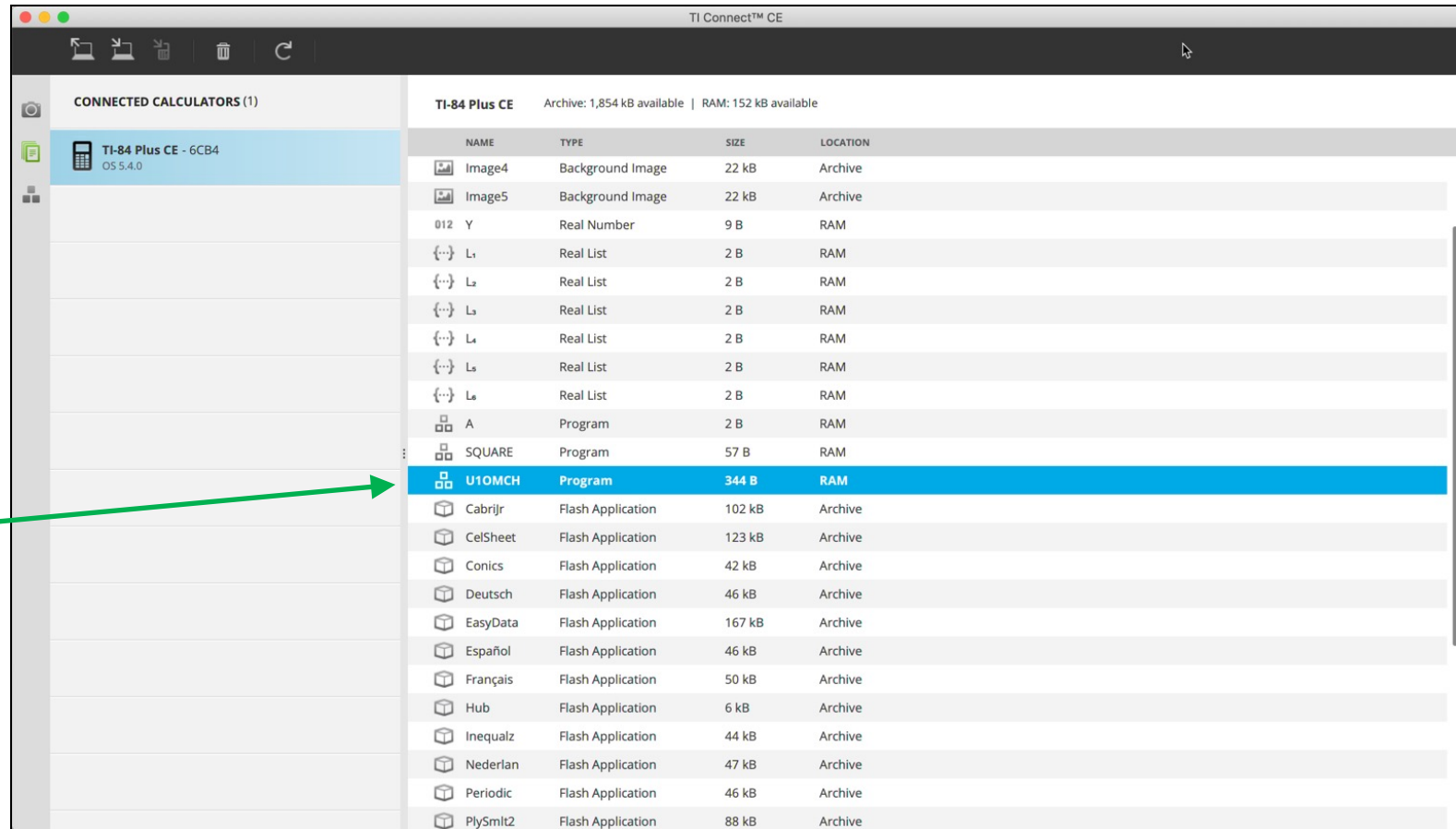
3. Click on download to calculator icon.

4. Use dialogue box to select file to send.



5. Use dialogue box to send file to the calculator.





6. Observe the file in the calculator file explorer.

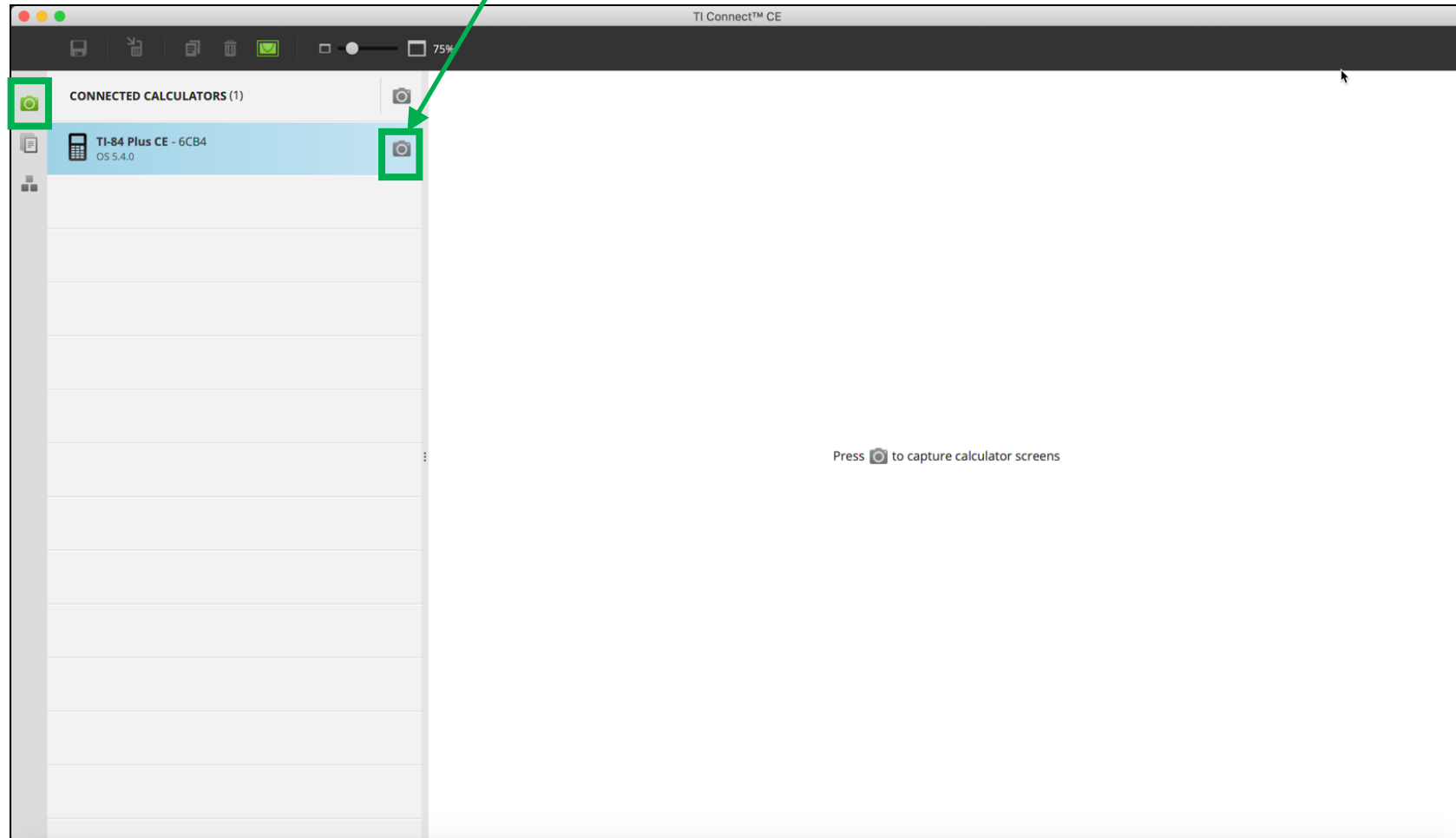
Double clicking on the file name will open the program in the computer program editor. Save back to the calculator memory by clicking on the send to calculator icon.

Capturing a screen from the calculator

1. Connect calculator to USB port of computer.

3. Click the camera icon to capture the calculator screen.

2. Click the Screen Capture icon.

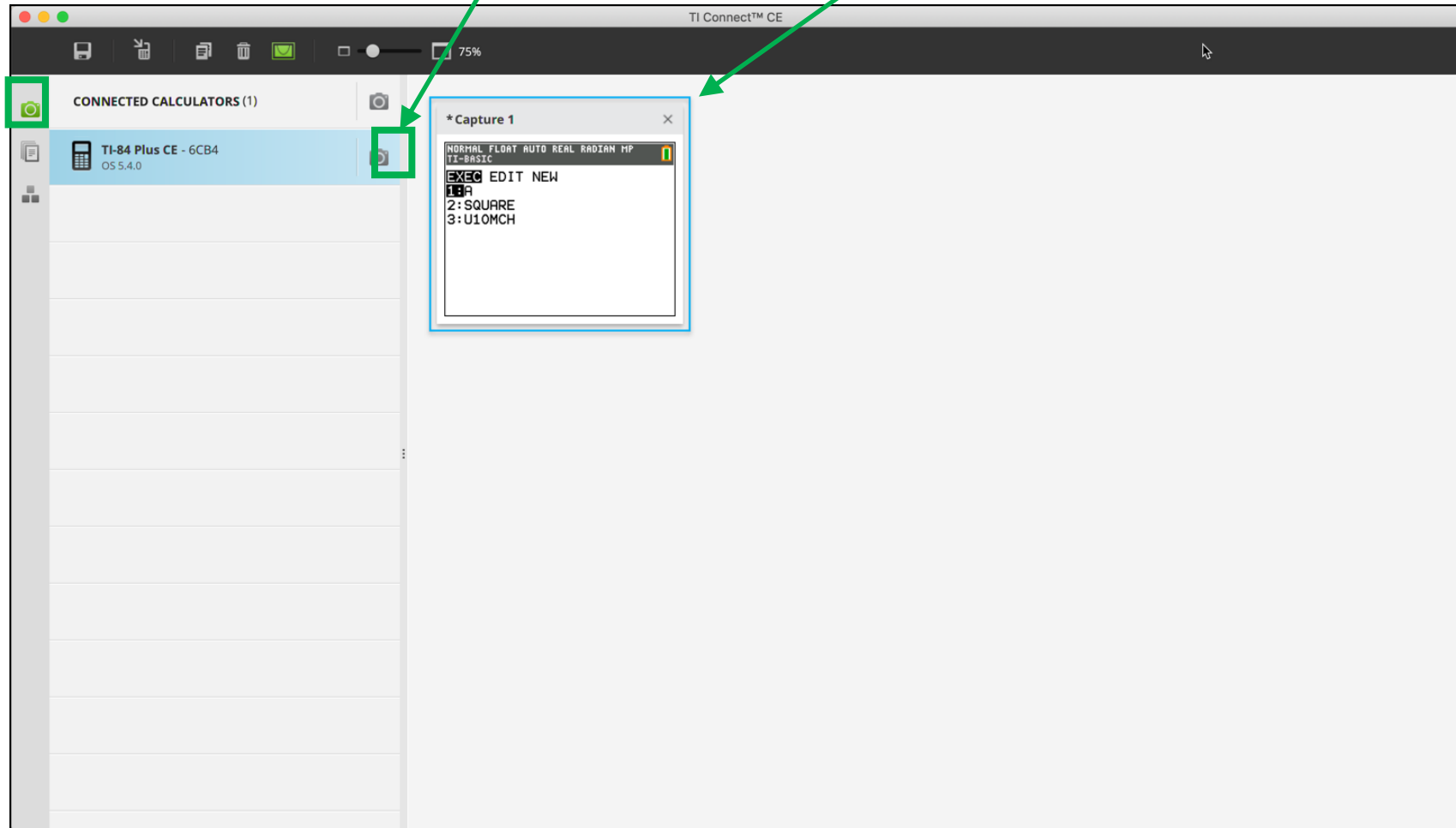


1. Connect calculator to USB port of computer.

3. Click the camera icon to capture the calculator screen.

4. The captured images will appear here.

2. Click the Screen Capture icon.



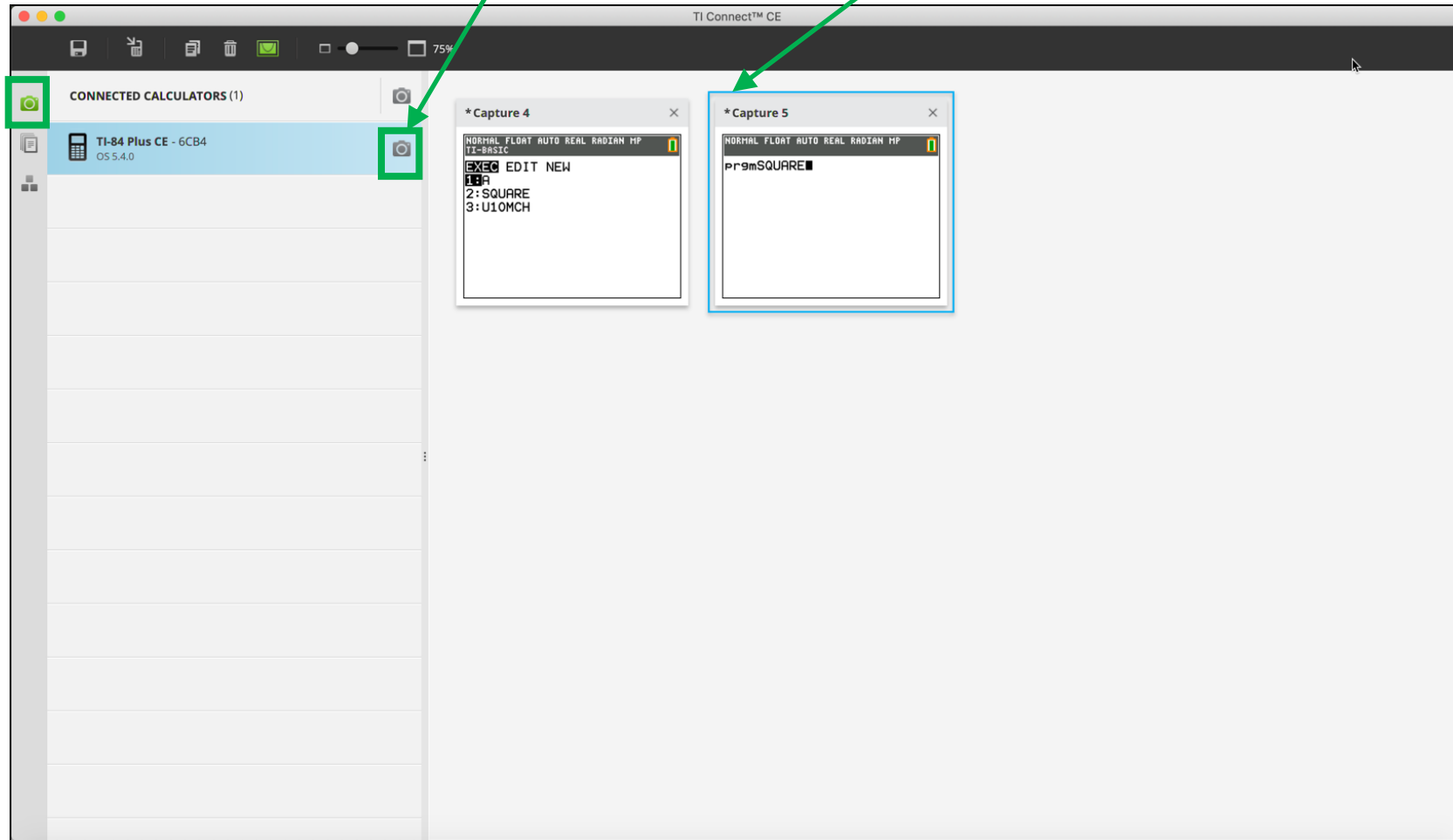
1. Connect calculator to USB port of computer.

3. Click the camera icon to capture the calculator screen.

4. The captured images will appear here.

5. Click on the image to select (highlighted with blue border) and copy, save or delete.

2. Click the Screen Capture icon.



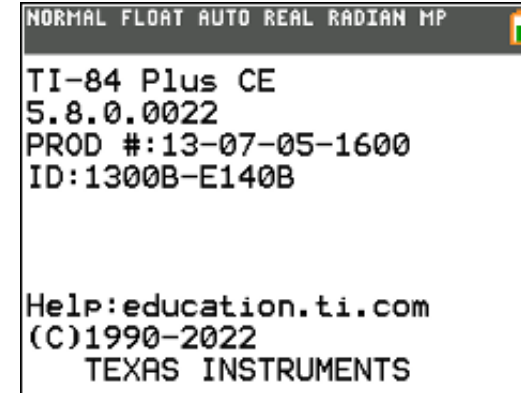
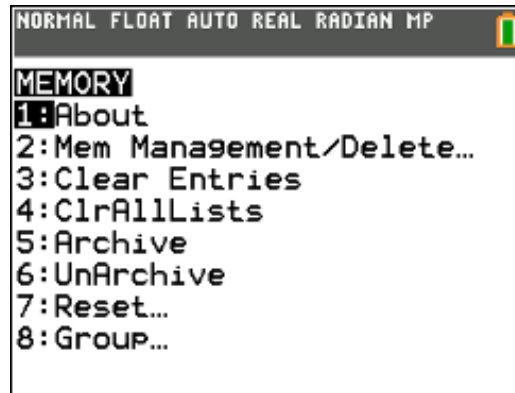
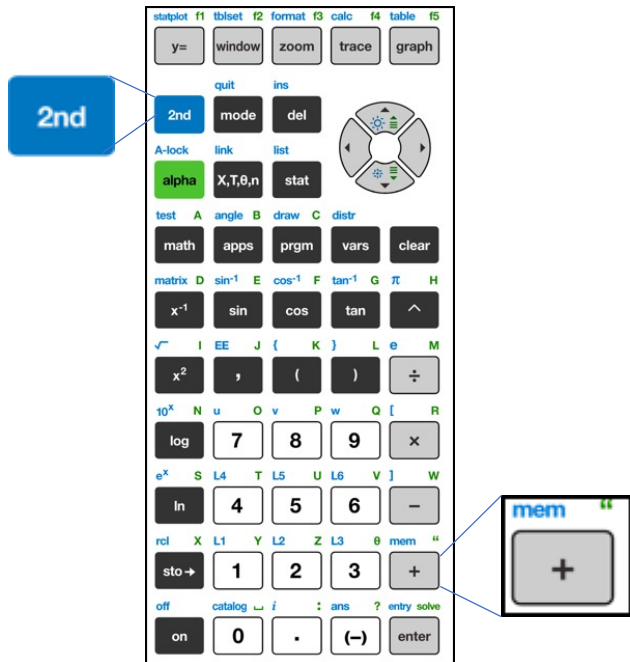
Updating the TI-84 Plus CE calculator
operating system and apps using an
OS/Bundle

See information about the latest update of the TI-84 Plus CE, TI Connect CE, TI SmartView CE and TI-Innovator Hub (released Sept 2020) at this [link](#).

You will be guided through a series of steps to download the updated software for all of your TI products.

Note: You can download just the TI-84 Plus CE 5.8 Operating System and apps bundle at this [link](#).

Check your calculator operating system by pressing [2nd] [mem] (plus key) and select 1:About



TI Connect™ CE Software



Updated for the TI-84 Plus family

You will need TI Connect CE Software to update your OS.



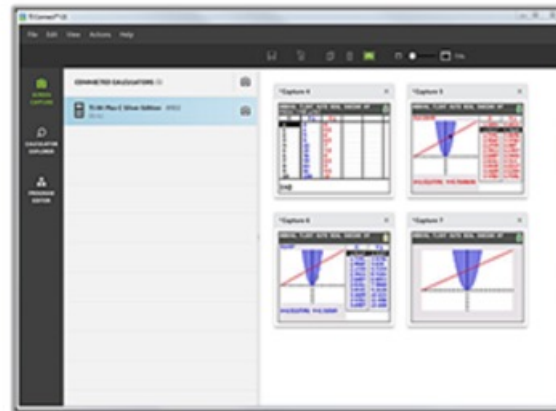
Download the latest version (5.6, released Sept 2020) at this [link](#).

Note: Windows users download .EXE file for individual installation.



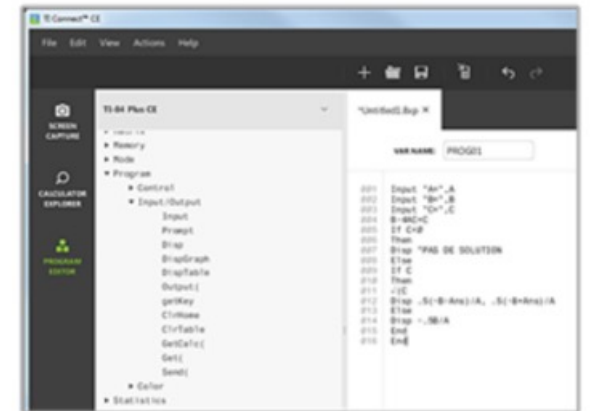
Calculator Explorer

Connect to multiple graphing calculators at once to update your graphing calculator's Operating System (OS), transfer data, download Calculator Software Applications (apps) and edit and upload programs.



Screen Capture

Take and manage screen captures from your connected graphing calculator quickly and simply. The Screen Capture workspace also enables you to convert images to be used as a background on your calculator.



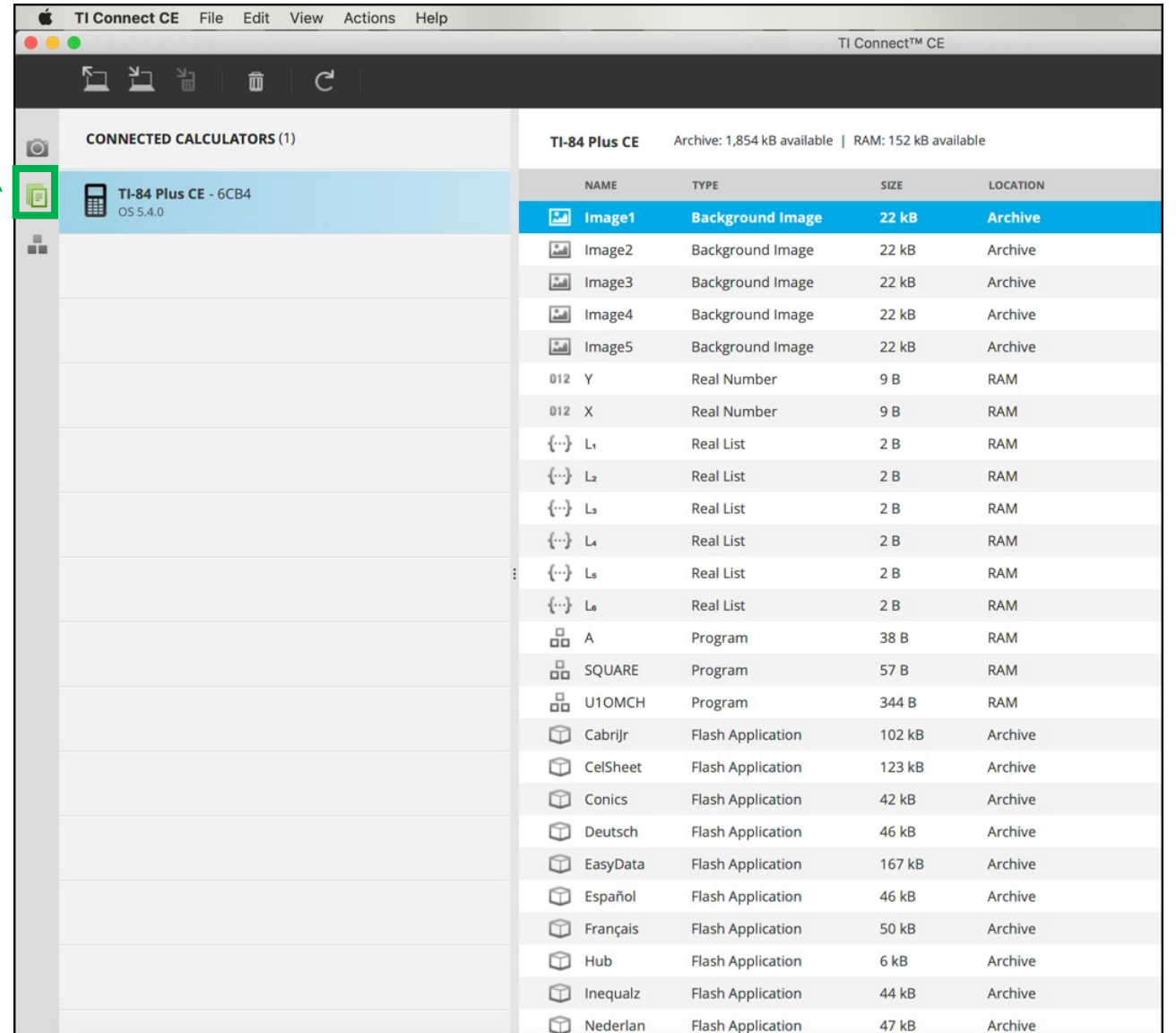
Program Editor

Create and edit calculator TI Basic programs using the Program Editor workspace. Quickly send programs directly to your connected calculator.

1. Download Operating system and apps bundle file from this [link](#) to your computer.

2. Connect calculator to USB port of computer.

3. Open TI CE Connect software. Click on Calculator file Explorer.

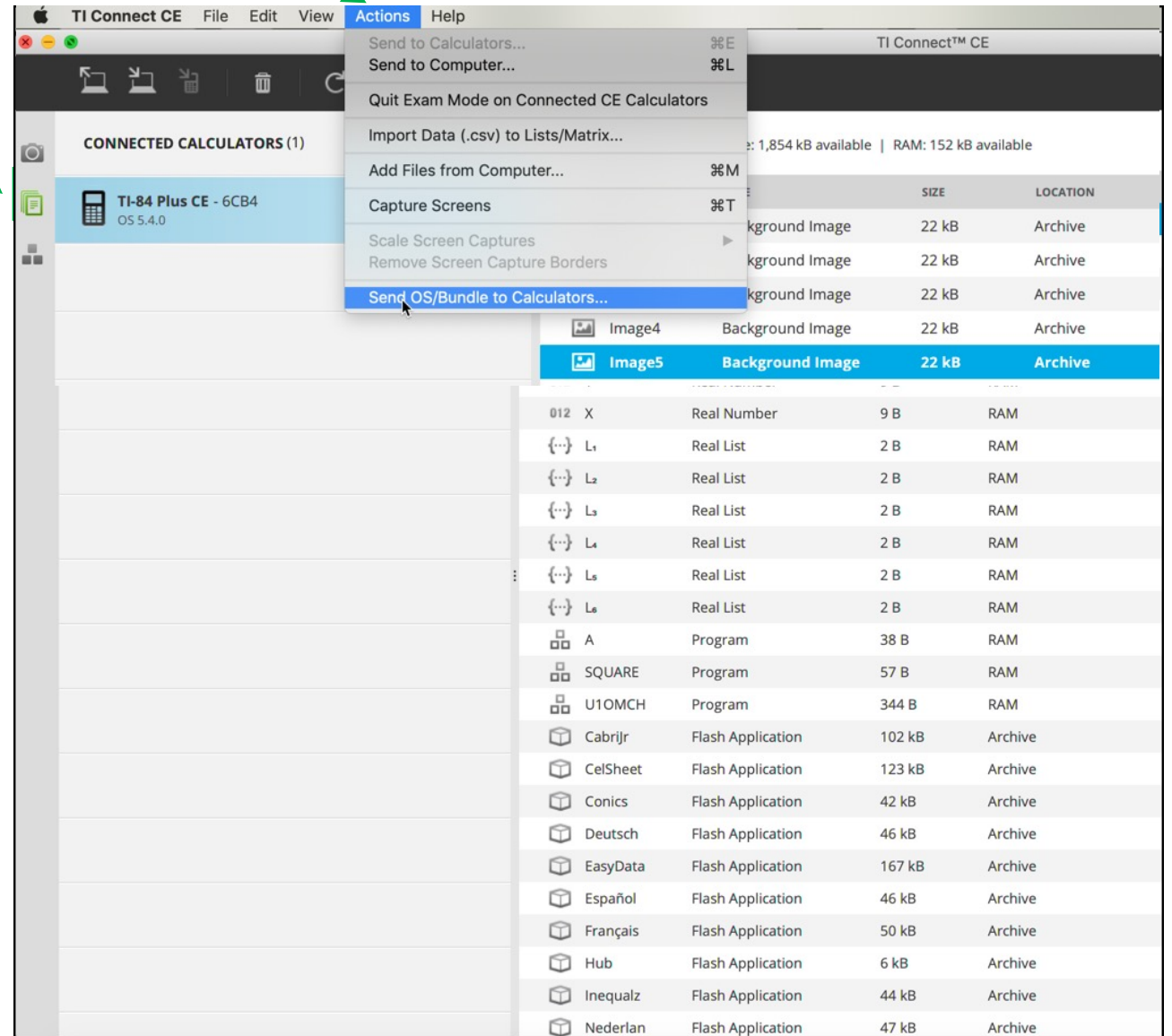


1. Download Operating system and apps bundle file from this [link](#) to your computer.

2. Connect calculator to USB port of computer.

3. Open TI CE Connect software. Click on Calculator file Explorer.

4. Select Actions menu, then select Send OS/Bundle to Calculators...



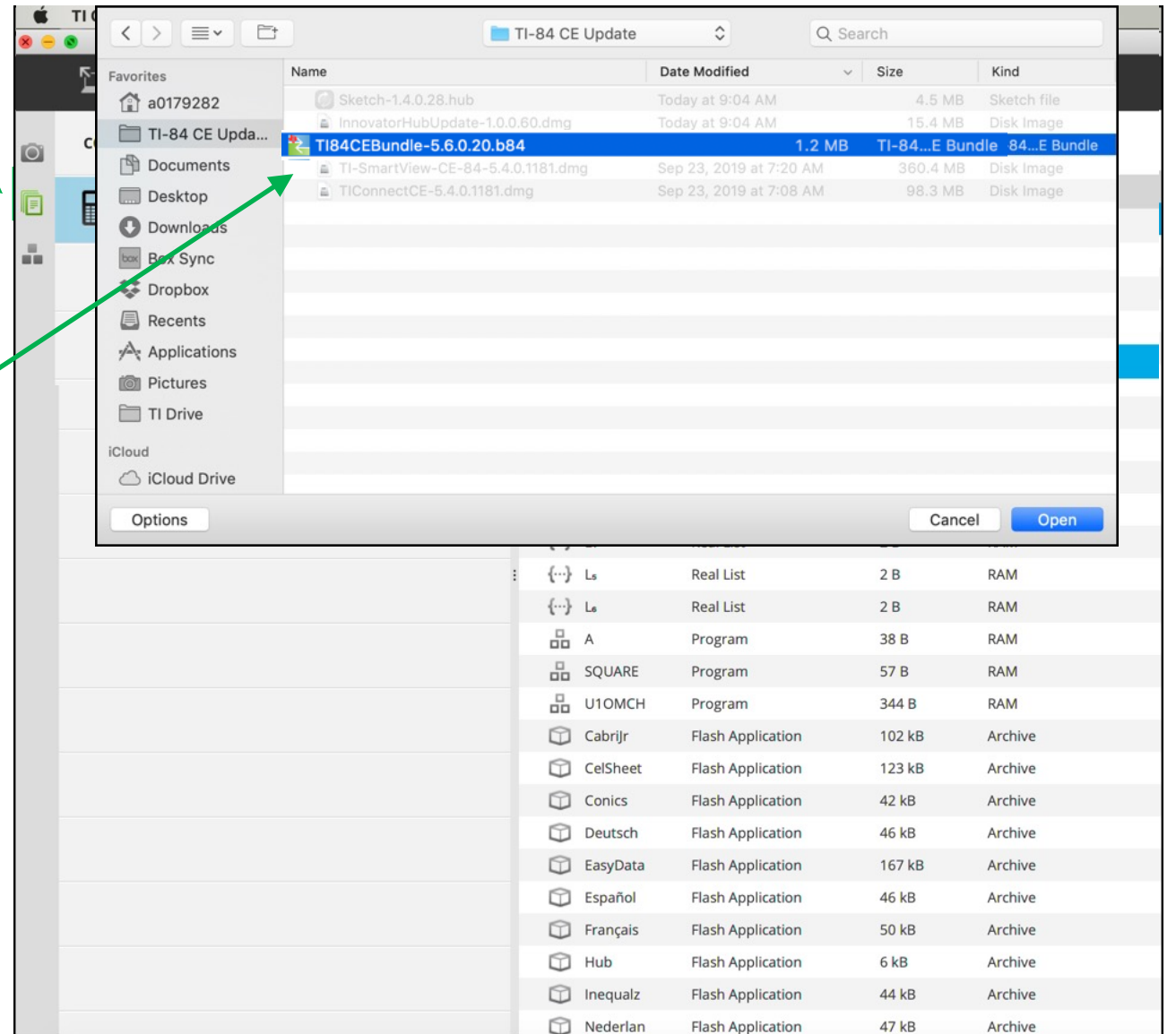
1. Download Operating system and apps bundle file from this [link](#) to your computer.

2. Connect calculator to USB port of computer.

3. Open TI CE Connect software. Click on Calculator file Explorer.

4. Select Actions menu, then select Send OS/Bundle to Calculators...

5. Navigate to the OS/Bundle file and select from dialogue.



1. Download Operating system and apps bundle file from this [link](#) to your computer.

2. Connect calculator to USB port of computer.

5. Navigate to the OS/Bundle file and select from dialogue.

6. Select SEND to transfer the operating system and apps bundle to the calculator.

4. Select Actions menu, then select Send OS/Bundle to Calculators...

3. Open TI CE Connect software. Click on Calculator file Explorer.

