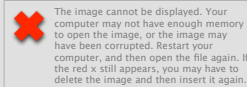


Introducing the TI-84 Plus CE Graphing Calculator

education.ti.com/tiwebinars

Moderator Bio

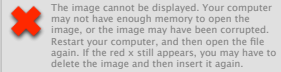


Mike Houston

**T³ National Instructor
Riverside High School
Ellwood City, PA**

Mike is in his eleventh year of teaching high school mathematics in Ellwood City, PA. While participating in a TI-Navigator™ Fast-Track in 2007, he learned how technology can effectively cultivate students' wide range of learning styles. During this time, Mike has served as a T³ National Instructor and a contributing author for MathForward™.

Panelists' Bios

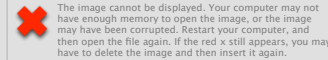


Toni Norrell

T³ Regional Instructor

Corpus Christi, TX

Toni has over 25 years of teaching experience from 5th grade to College Algebra. She is currently a Math Specialist and T3 Regional Instructor. Toni was also a PAEMST winner in 2007.



Michelle Rinehart

T³ Regional Instructor

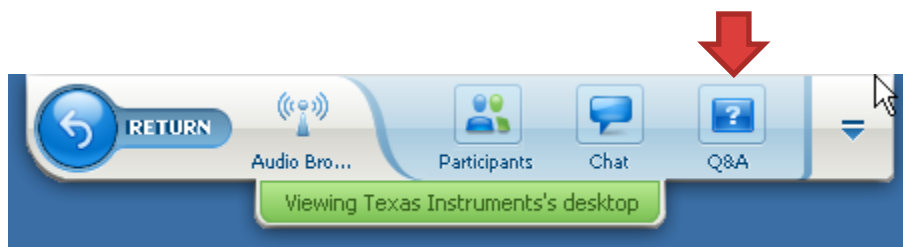
Fort Davis, TX

Michelle studied mathematics, physics, and education before moving to Texas. Michelle has taught high school math and science at rural districts in Texas, while also working as a math and science consultant. Michelle has presented at numerous state and international conferences and was named one of three finalists for the 2013 TCEA Texas Teacher of the Year.

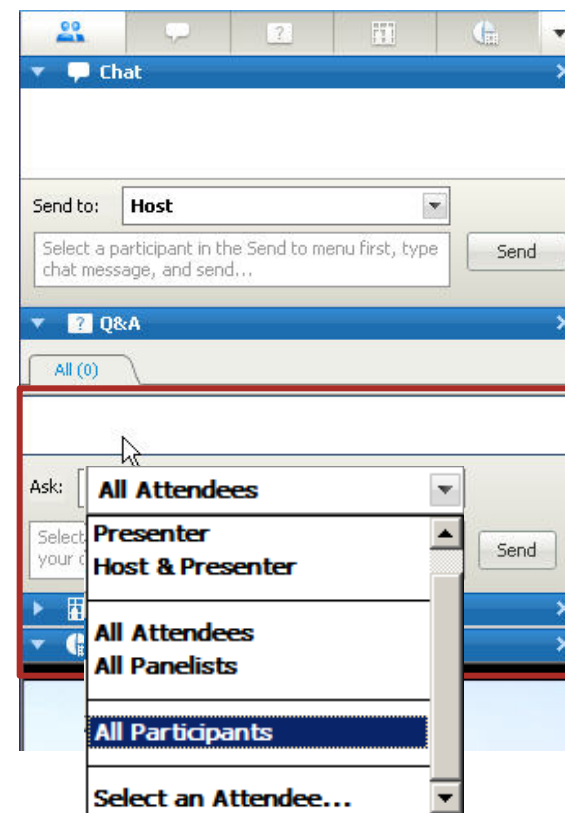
Chat & Questions?

Please ask questions using the Q&A box:

- When we are not in desktop-sharing mode, the **Q&A** panel is on the right side of your screen.
- When we are presenting in desktop-sharing mode, the **Q&A** panel can be accessed via the “floating toolbar” at the top of the screen.



*Note: Use the **Chat** panel for general communication*



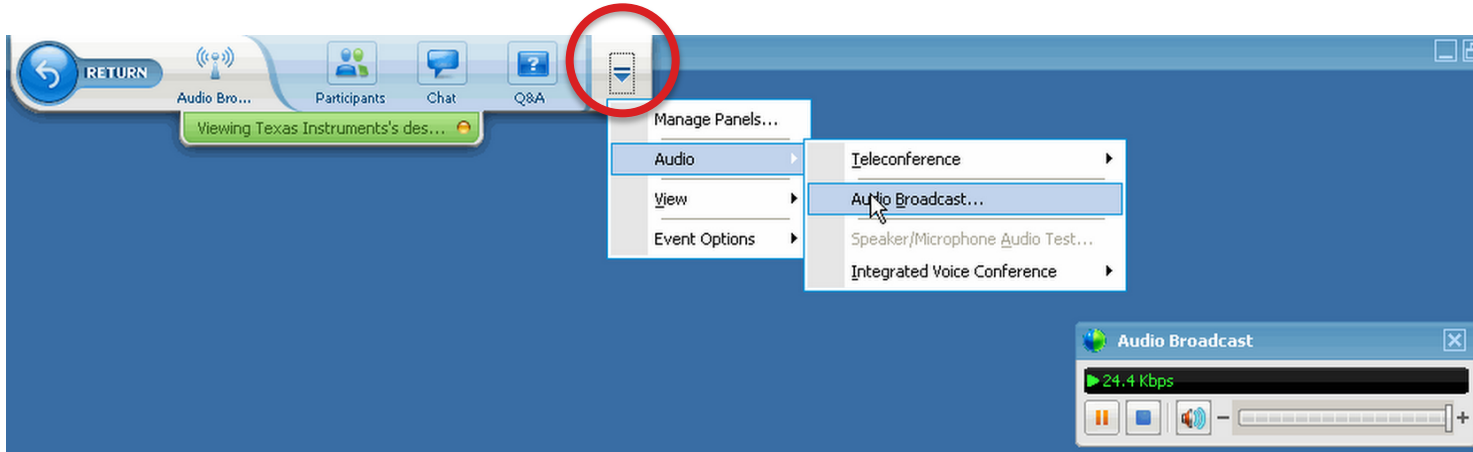
Questions directed to:

- **All Attendees** excludes Moderator and Panelists
- **All Participants** includes everyone in the meeting

Audio

If your audio becomes disconnected, follow these instructions to reconnect it.

1. Click the “eject” arrow at the far right of the floating toolbar.
Select *Audio > Audio Broadcast...* and click the “Play” icon.



2. If we are not in desktop-sharing mode, go to *Communicate > Audio Broadcast* and click the “Play” icon.

Agenda

- Welcome & Introductions
- Introducing the TI-84 Plus CE
- 84 Activity Central ****New!!**
- Transforming Fish
- TI Connect CE Software
- Free online resources

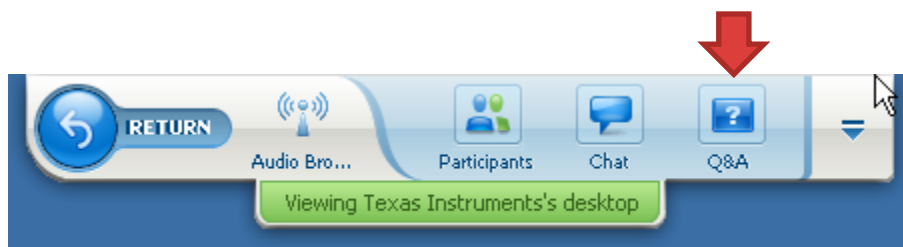
Expected Outcomes:

- **Preview** of the enhanced TI-SmartView™ CE Emulator Software for the TI-84 Plus graphing family and the TI Connect™ CE software application
- **Learn** how to locate and download hundreds of free, standards-aligned lessons for middle grades through high school mathematics
- **Stay in touch** with social media and upcoming events

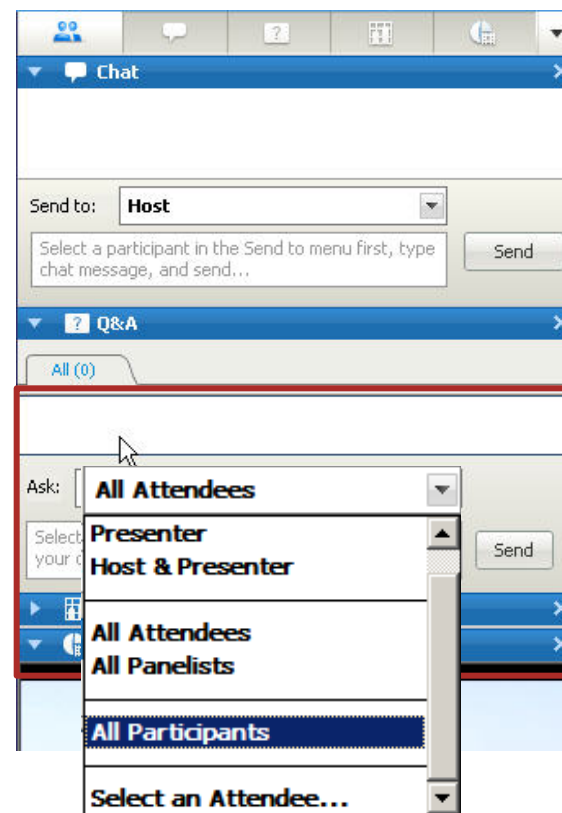
Chat & Questions?

Please ask questions using the Q&A box:

- When we are not in desktop-sharing mode, the **Q&A** panel is on the right side of your screen.
- When we are presenting in desktop-sharing mode, the **Q&A** panel can be accessed via the “floating toolbar” at the top of the screen.



*Note: Use the **Chat** panel for general communication*



Questions directed to:

- **All Attendees** excludes Moderator and Panelists
- **All Participants** includes everyone in the meeting

Introducing the TI-84 Plus CE....!



Education Technology

Search



Products

Downloads

Activities

Professional Development

Solutions

Support

Where to buy

Site US and Canada

TI-84 Plus CE Graphing Calculator

Familiar TI-84 Plus functionality in a sleek new design that features a crisp color screen

Coming Spring 2015



Overview

Specifications

Applications

Accessories

Surprisingly slimmer. Lots lighter. Totally TI-84 Plus.



Introducing the TI-84 Plus CE...!



Key Features

- > 30% lighter and thinner than earlier generation TI-84 Plus models
- > Vibrant backlit color screen
- > TI Rechargeable Battery
- > Available in a variety of fun colors
- > Pre-loaded Apps and Images
- > MathPrint™ functionality

84 Activity Central

Middle Grades Math

Algebra I

Geometry

Algebra II

Precalculus

Statistics

Calculus

Standards Search

Textbook Search

84
Activity
Central

Download free activities that enhance your lesson plans and enable students to visualize mathematics in middle grades through high school topics.

Select a Subject



Meet the newest addition to the TI-84 Plus family.

The TI-84 Plus CE features the same menus and navigation as the TI-84 Plus C Silver Edition – in a slimmer, sleeker design. >>>



Webinars On-Demand

Take advantage of these free, on-demand webinars that show educators how to effectively use TI technology to build student understanding. >>>

TI Connect™ CE Software

TI Connect™ CE Software

TI Connect™ CE computer software allows for connectivity between your computer and graphing calculator. Transfer data, update your Operating System (OS), download Calculator Software Applications (Apps), edit and load programs to your graphing calculator.

»»» [Learn more](#)

»»» [Download for PC](#)

»»» [Download for Mac](#)



Upcoming T³ Webinars

- » Dynamic STEM Content with TI-Nspire™ Technology
3/17/15
- » Formative Assessment with the TI-Nspire™ CX Navigator™ System – Leading Learners to Level Up
3/24/15
- » Exploring Geometric Relationships with TI-Nspire™ Technology
3/31/15



Start time for all webinars:
8 PM ET | 7 PM CT | 5 PM PT

Register for and view webinars at
education.ti.com/tiwebinars

Stay Connected with TI



Facebook.com/TICalculators



@TICalculators



Instagram.com/TICalculators



Youtube.com/TIforEducators

Youtube.com/TexasInstrumentsCalc



Pinterest.com/TIEdTech



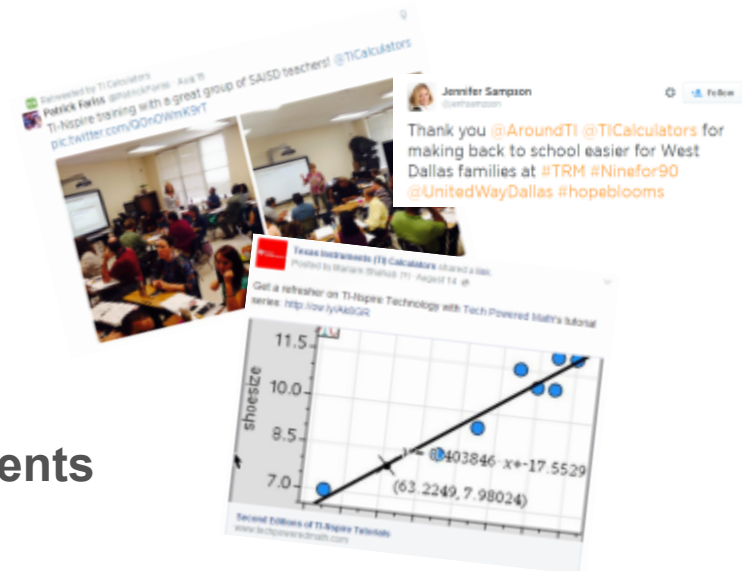
Teachertube.com/user/TexasInstruments

Join the conversation

#ScienceNspired

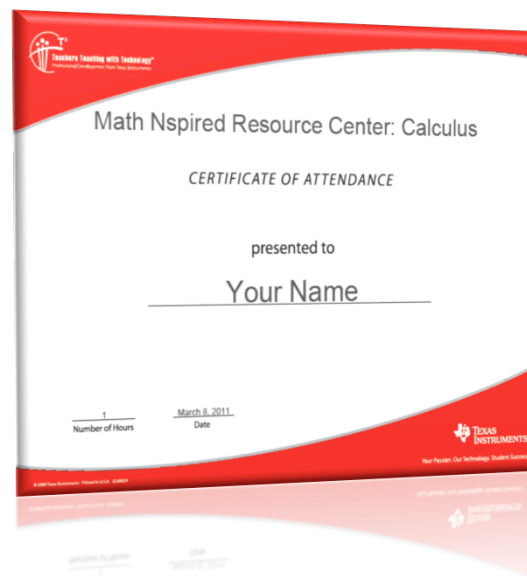
#MathNspired

#T3Learns



Get your Certificate of Attendance

- A Certificate of Attendance is available for webinars attended through the webinar system and will be provided through Chat at the conclusion of this event.



Wrap Up and Final Q&A's

Send webinar questions to:
EdTech_webinars@list.ti.com

Post-webinar Follow Up

SUPPORT:

- To further discuss our resources, activities, products and services, please email TI at the following email address.

ti-cares@ti.com

SALES:

- If you would like a consultation on an upcoming purchase of TI Technology or professional development, then please email us at the following address.

ti-educators@ti.com

Thank you!

education.ti.com