

$$I = \int_{t_1}^{t_2} F dt$$

$$P = m \cdot v$$

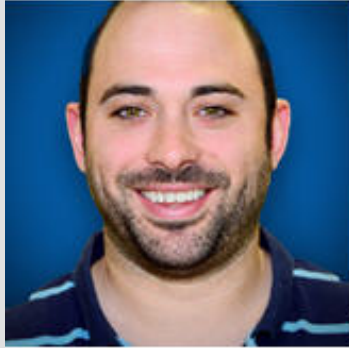
T³™ Webinar Series

Formative Assessment with TI-Nspire™ Technology and the Built-In Question Application



Your Passion. Our Technology. Student Success.™

Moderator Bio



Mike Houston

**T³ National Instructor
Riverside High School
Ellwood City, PA**

Mike is currently in his eighth year of teaching high school mathematics in Ellwood City, PA. While participating in a TI-Navigator™ Fast-Track in 2007, he learned how technology can effectively cultivate students wide range of learning styles. During this time, Mike has served as a T³ National Instructor and a contributing author for MathForward.

Panelists' Bios



Karen Campe

**T³ National Instructor
New Haven, CT**

An instructor of mathematics education at Yale University, Karen previously taught high school and middle school math for 13 years. She has also been a T³ National Instructor since 1998, and has been an author of materials for summer workshops and TI instructional websites.



Allan Bellman

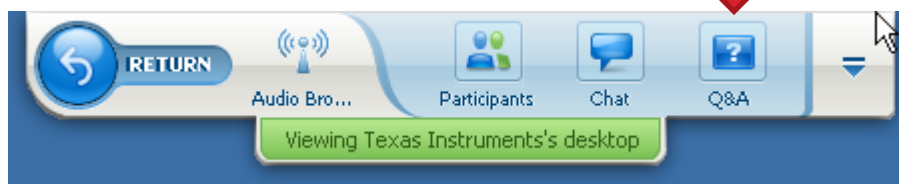
**T³ National Instructor
Oxford, MS**

Dr. Allan Bellman – Associate Professor of Mathematics Education at the University of Mississippi – has over 43 years teaching experience and has written numerous textbooks. He is a recipient of the Tandy Award for Teaching Excellence and has twice been listed in Who's Who Among America's Teachers.

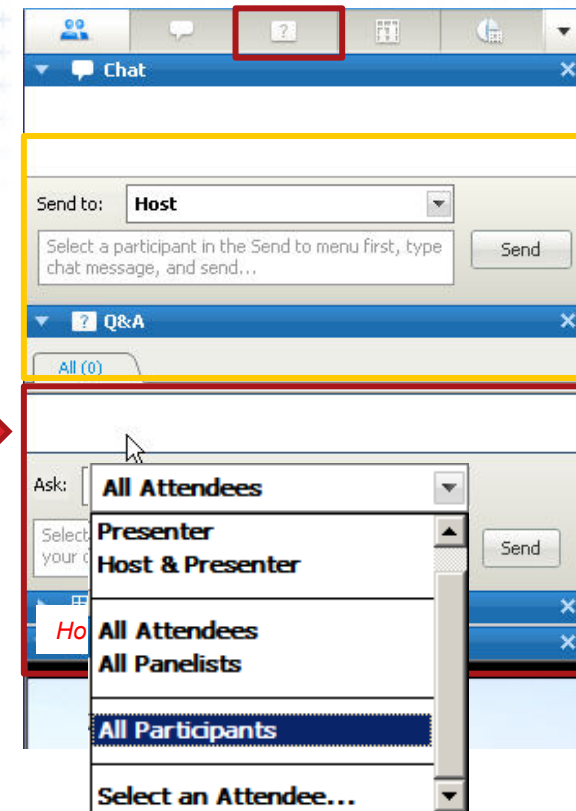
Chat & Questions?

Attendee phones and headsets are muted, so please ask questions using the Q&A box:

- When we not in desktop-sharing mode, the **Q&A Box** looks like this (as shown to the right)
- When we are presenting in desktop-sharing mode, access the **Q&A Box** with the “floating toolbar” at the top of the screen (as shown here)



*Note: Use the **Chat Box** for general communication*



- **All Attendees**, excludes Moderator and Panelists
- **All Participants**, include everyone in the meeting! Use this one so we see your Chat!

Agenda

- Welcome & Introductions
- What is formative assessment?
- How can the built-in question application be used to assess your students?
- What role can the TI-Nspire™ Navigator™ System play in your classroom?
- Learn about free online resources

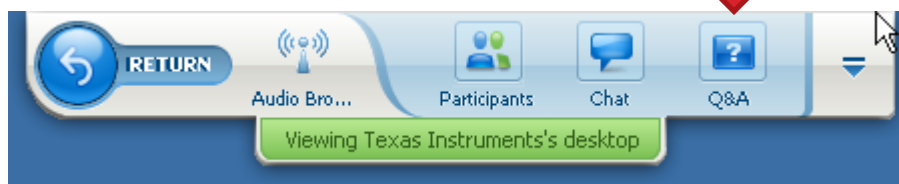
By end of this webinar, you will be able to:

- **Learn** a working definition of formative assessment
- **Discuss** when formative assessment should be used
- **Use** different types of questions to assess your students comprehension
- **Use** the TI-Nspire™ Navigator™ System to aggregate student responses to questions
- **Stay in touch** with social media and upcoming events

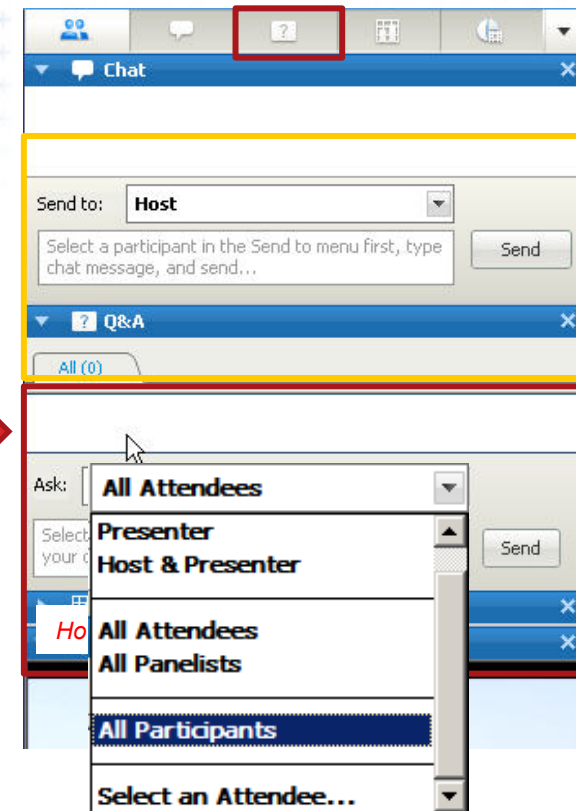
Chat & Questions?

Attendee phones and headsets are muted, so please ask questions using the Q&A box:

- When we not in desktop-sharing mode, the **Q&A Box** looks like this (as shown to the right)
- When we are presenting in desktop-sharing mode, access the **Q&A Box** with the “floating toolbar” at the top of the screen (as shown here)



*Note: Use the **Chat Box** for general communication*



- **All Attendees**, excludes Moderator and Panelists
- **All Participants**, include everyone in the meeting! Use this one so we see your Chat!

T³™ Summer Workshops

Get hands-on, subject-specific technology professional development on key education topics and how to integrate technology effectively into the math and science classroom.

Exceptional value! Included in the cost:

- TI-Nspire CX™ Handheld and TI-Nspire™ Teacher Software OR
- TI-84 Plus C Silver Edition and TI-84 Plus Smartview™ Emulator



See a list of workshop dates and locations:

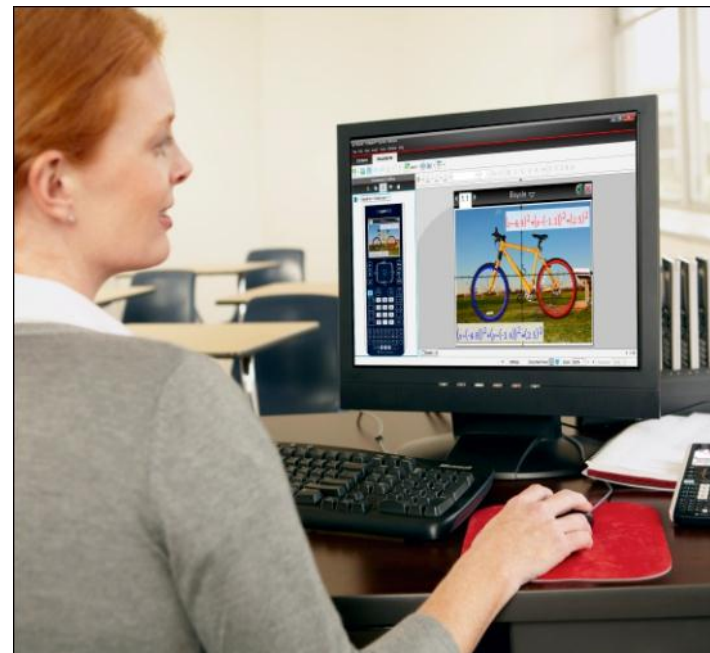
education.ti.com/go/t3summer2013

Upcoming T³ Webinars

- Math Nspired: CCSS Topics in Geometry with TI-Nspire Technology – April 2nd, 2013
- The Next Generation Science Standards with TI-Nspire™ Technology – April 23rd, 2013
- Transitioning to the TI-84 Plus C Silver Edition Graphing Calculator – April 30th, 2013

Start time for all webinars:

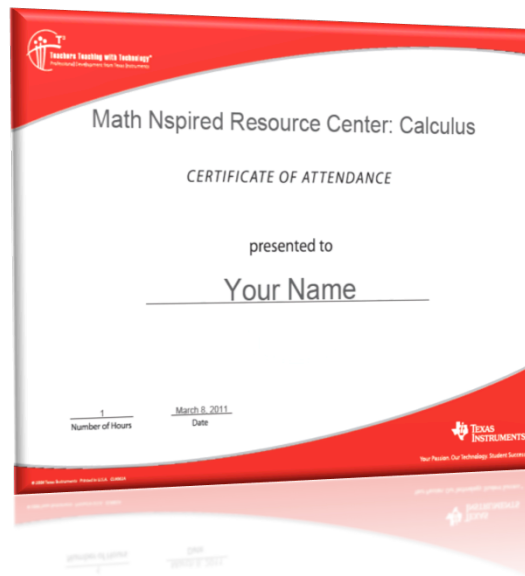
8 PM ET | 7 PM CT | 5 PM PT



Register for and view webinars at
education.ti.com/tiwebinars

Get your Certificate of Attendance

- A Certificate of Attendance is available for webinars attended through the webinar system and will be provided through Chat at the conclusion of this event.



Wrap Up and Final Q&A's

Send webinar questions to:
EdTech_webinars@list.ti.com

Send product questions to:
ti-cares@ti.com.



Thank you!

education.ti.com