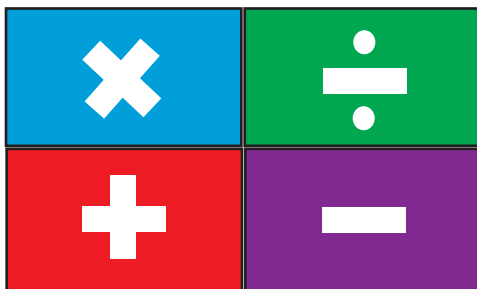


Math TODAY™

Student Edition

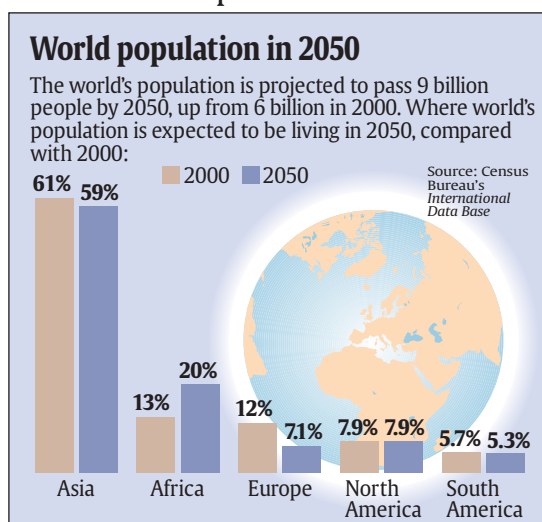
USA TODAY

NO. 1 IN THE USA



World population in 2050

USA TODAY Snapshots®



Focus Questions:

- Determine the population for each of the continents shown in the USA TODAY Snapshot "World population in 2050."
- Which continent is projected to have the greatest percent increase in population? What is the percent increase?
- What is the percent change in population for Europe? What impact will this change have on the percentage of the expected population of Europe by 2050?

Activity Overview:

The USA TODAY Snapshot "World population in 2050" shows a relative frequency graph. You will use the percents to calculate the population for each of the continents shown and then display this data as a frequency graph. You will be comparing your bar graph with the USA TODAY Snapshot and will discuss any differences or similarities. You will determine the percent change (increase or decrease) in the population from 2000 to the projected population in 2050. The meaning of this percent increase or decrease will be explored in the context of the expected change in world population.

©COPYRIGHT 2004 USA TODAY,
a division of Gannett Co., Inc.

This activity was created for use with
Texas Instruments handheld technology.

World population in 2050

Assessment and Evaluation:

Determine the population for each of the continents shown in the USA TODAY Snapshot "World population in 2050."

Step 1:

Start the CellSheet™ Application and open a blank spreadsheet. Enter the continents from the USA TODAY Snapshot as headings in cells A2:A6

Step 2:

In cells B1:F1 enter the following column headings.

- PE2000 - percent 2000
- PE2050 - percent 2050
- PO2000 - population in 2000
- PO2050 - population in 2050
- PERCH - percent change in population

Step 3:

Enter the percentages from the USA TODAY Snapshot for each of the continents for 2000 and 2050. Move to cell D2 and enter a formula to calculate the population estimate for Asia in 2000. Copy this formula down for the other continents. Move to cell E2, enter a formula to calculate the population estimate for Asia in 2050 and copy this formula to determine the remaining population estimates. Complete the table below:

	Population 2000	Population 2050
Asia		
Africa		
Europe		
North America		
South America		

Step 4:

Select Menu, Charts, and Bar to create a bar graph of the population data in D2:D6 and E2:E6 for each continent. Compare this bar graph with the bar graph in the USA TODAY Snapshot "World population in 2050," What differences do you notice? _____

Which continent is projected to have the greatest percent increase in population? What is the percent increase?

Move to cell F2 and enter a formula to calculate the percent change in population from 2000 to 2050. Which continent is projected to have the greatest percent increase in their population? _____
 What is the percent increase? _____

What is the percent change in population for Europe? What impact will this change have on the percentage of the expected population of Europe by 2050?

What is the percent change in Europe's population? _____
 What impact will this change have on the percentage of the expected population of Europe by 2050? _____

Data Source:

Census Bureau's International Data Base

Materials:

- TI-83 Plus family or TI-84 Plus family
- CellSheet Application

Additional Information:

- **Population Reference Bureau**
www.prb.org/datafind/datafinder.htm
- **USATODAY.com**
www.usatoday.com/news/nation/census/front.htm
- **USA TODAY**