

## Appendix E

### Linking

#### *Linking two calculators*

You can transfer data from one TI-73 to another using the unit-to-unit cable.

To connect the TI-73 to another device using the unit-to-unit cable, use the link port located at the center of the bottom edge of the calculator.

1. Insert either end of the unit-to-unit cable into the TI-73 port very **firmly**.
2. Insert the other end of the cable into the port of the other device.

Next, set up the TI-73 to receive data:

1. Press **[APPS]** to display the **APPLICATIONS** menu.
2. Select **1:Link** and press **[▶]** to display the **Link RECEIVE** menu.
3. Select **1:Receive**. The message **Waiting...** and the busy indicator are displayed. The receiving unit is ready to receive transmitted items.

To exit the receive mode without receiving items, press **[ON]**, and then select **1:Quit** from the **Error in Xmit** menu.

To select data items to send from the sending unit to another calculator, follow these steps:

1. Press **[APPS]** to display the **APPLICATIONS** menu.
2. Select **1:Link** to display the **Link SEND** menu.
3. Select the type of data you want to send. The corresponding **SELECT** screen is displayed. Each **SELECT** screen, except the one for **All+**, is displayed initially with no data items selected.
4. Press **[▲]** and **[▼]** to move the selection cursor (▶) to an item you want to select or deselect.

5. Press **[ENTER]** to select or deselect an item. Selected names are marked with a black box (■). To exit a **SELECT** screen without transmitting any items, press **[2nd]** **[QUIT]**.



6. Repeat steps 4 and 5 to select or deselect additional items.
7. Press **[▶]** to select **TRANSMIT**.
8. Press **[ENTER]**.

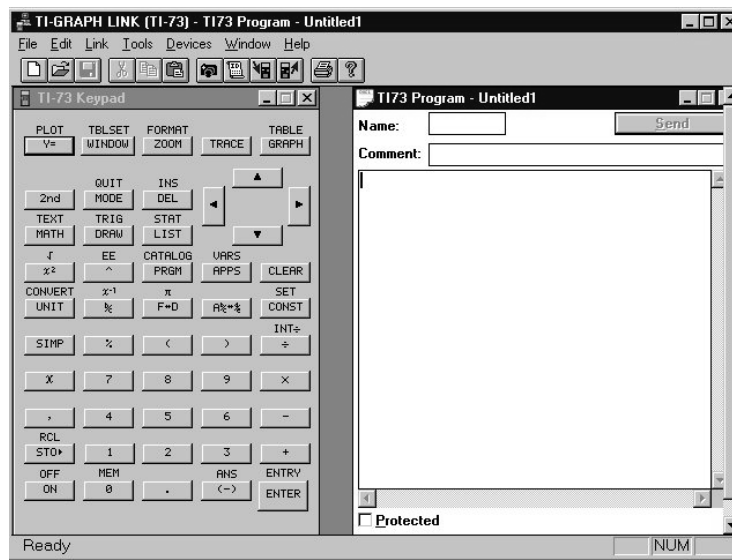
When transmission is complete, the receiving unit will still be in the receive mode. Press **[2nd]** **[QUIT]** to exit the receive mode.

### Linking a calculator and a computer

TI-GRAPH LINK™ allows you to transfer information from the TI-73 to a computer or from a computer to a TI-73. The software comes in Windows and Mac versions.

To use TI-GRAPH LINK:

1. Connect the TI-GRAPH LINK cable to an open port on the back of your computer. You will need to know the name of this port (for example, COM1) for the software configuration.
2. Start the program and connect the calculator to the cable through the link port on the bottom. When transferring files (programs, lists, and so forth) from the TI-73 using the TI-GRAPH LINK, the calculator should be turned on and at the Home Screen. If you place the calculator in the Link application, you will get an error. When collecting screen images from the TI-73, most of the time you can be anywhere you wish.



The initial screen has several icons to execute common tasks. These include:

Capturing the screen displayed on the TI-73



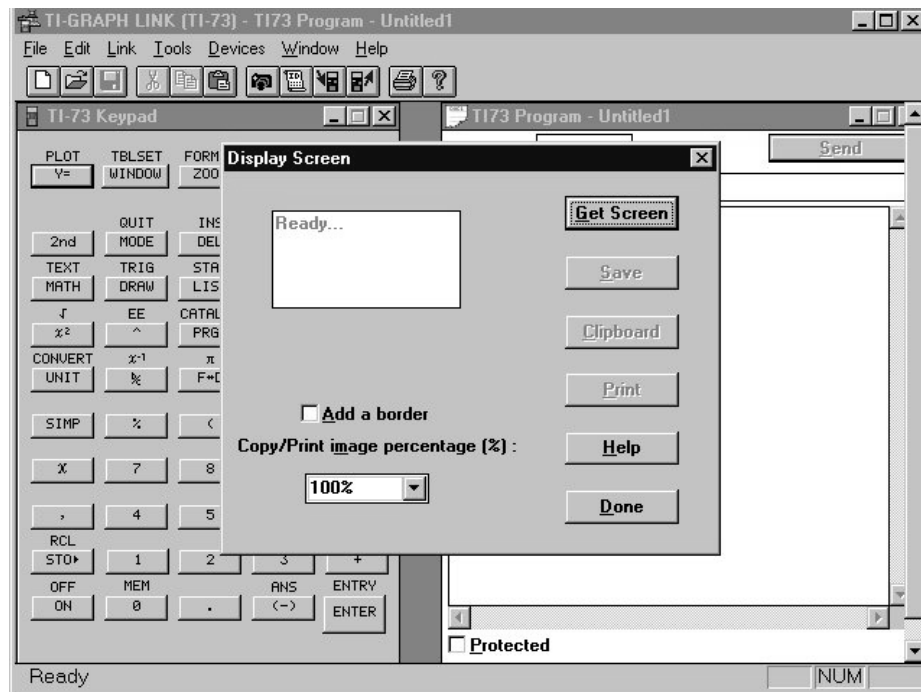
Sending files to the TI-73



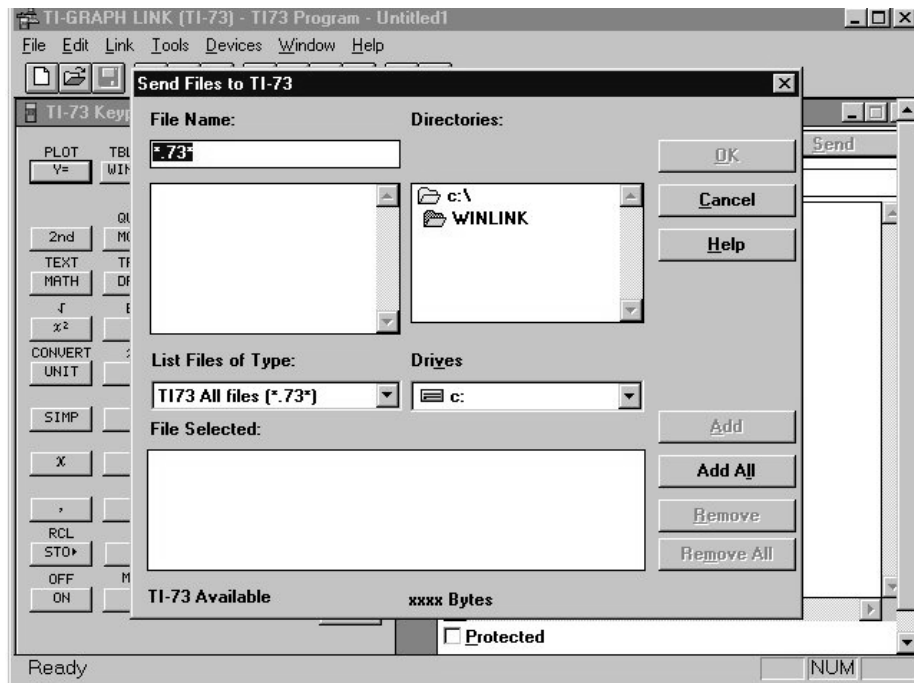
Receiving files from the TI-73



3. To use any of the options, click on the appropriate icon or select the option from the **Link** menu.
  - a. To capture a screen, once you have the image that you want on the screen of the TI-73, click **Get Screen**. Then click the appropriate option and repeat the **Get Screen** option for another image from the TI-73, or select **Done**.



- b. To transfer files from the computer to the TI-73, press the appropriate icon and select the files needed to send to the TI-73.



- c. To transfer files from the TI-73 to the computer, select the appropriate icon and then select (by double-clicking) the files to transfer and then click on **OK**. Make sure you note the directory in which you placed the files. Note also that you can group files if needed.

