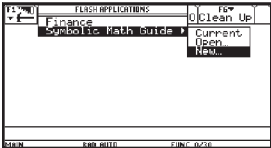


Symbolic Math Guide App

TI-89
Titanium

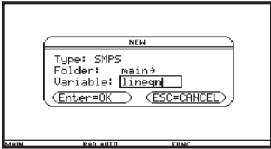
Voyage™ 200

This App helps students learn and practice problem-solving strategies by providing transformations for various types of computational problems, from Algebra and Precalculus to Calculus. Simplify expressions solving equations, compute derivatives, and more.



1

Press **[APPS]**, 1:FlashApps, and select Symbolic Math Guide and New.



2

To enter a new problem set, move the cursor to the Variable field, type the name of the new problem set (for this example, lineqn), and press **[ENTER]** twice.



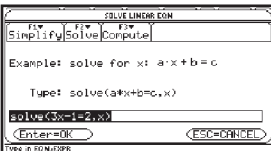
3

To enter a new problem, press **[F2]** 1:New Problem.



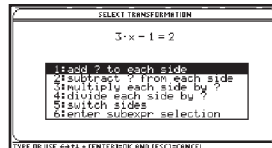
4

To select the linear equation problem type, press **[F2]** 1:Linear Eqn.



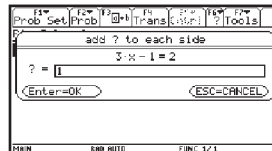
5

Enter a linear equation problem and press **[ENTER]**. For this example, enter Solve **(F2)** (3x-1=2,x).



6

Press and select the appropriate transformation. (The list of transformations displayed depends on the type of problem.) For this example, select 1:Add ? to each side by pressing **[ENTER]**.



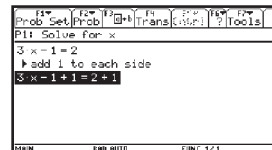
7

Enter a value in the transformation dialog box. For this example, enter 1. Press **[ENTER]**.



8

Press **[ENTER]** to perform the transformation.



9

To simplify the arithmetic, press **[ENTER]**.



10

Perform any subsequent steps as required and verify the solution.