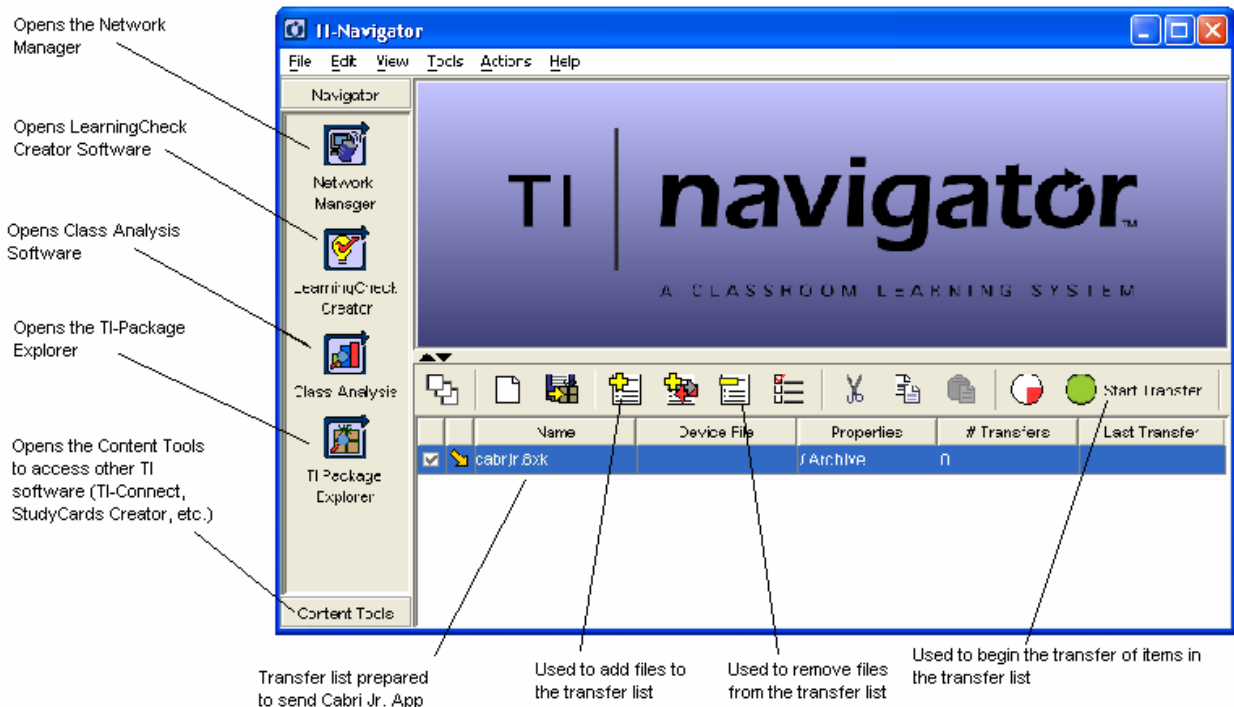


TI-Navigator Basic Skills

This section includes an introduction to some of the basic skills and functions of the TI-Navigator.

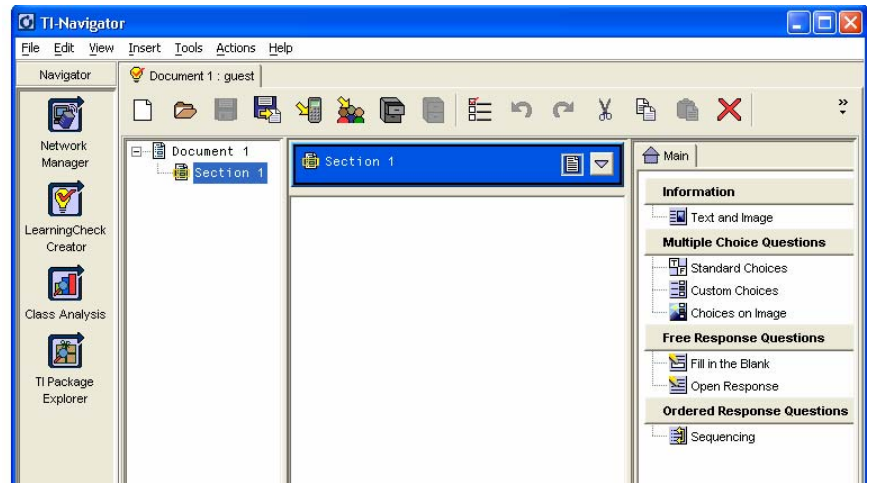


Definitions

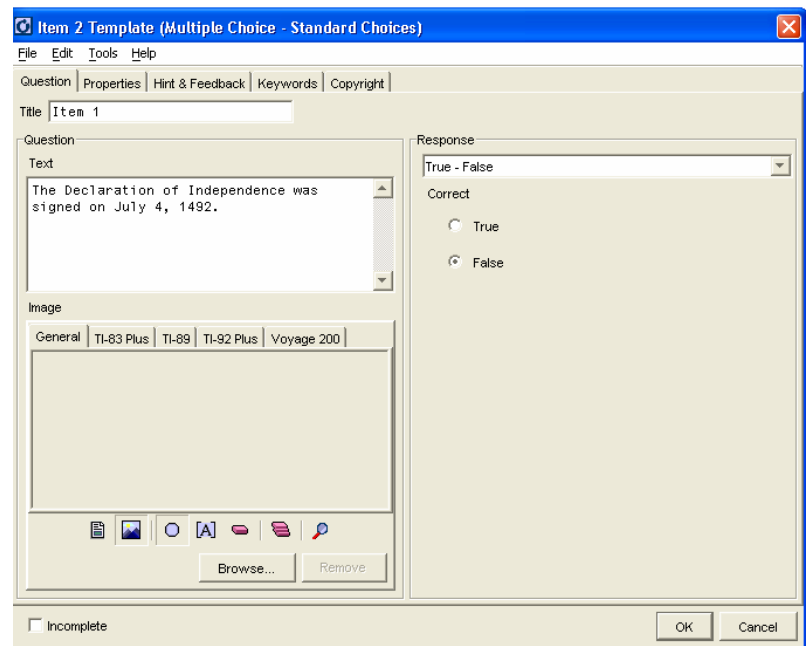
- **LearningCheck** – The student assessment component of TI-Navigator. Teachers can create educational documents including multiple-choice, fill-in-the-blank, open-response, and sequencing questions.
- **Class Analysis** – The software that is used to evaluate student work in LearningCheck. Teacher can receive complete and graded results of student work
- **Transfer List** – Any non-operating system file for a flashable TI handheld (except TI-73 families) can be simultaneously sent to or collected from all students. The transfer list shows all which files are ready to be transferred.
- **TI-Package** – Teachers can save the transfer list as a package for future classes. A TI-Package saves the files in the transfer list and compresses them to minimize storage.
- **Network Manager** – This is used to set up the communication between the teacher computer and student handhelds.

Creating an Educational Document


Click on the Learning Check Creator software icon. There are four main categories: Information, Multiple Choice Questions, Free Response Questions, and Ordered Response Questions.

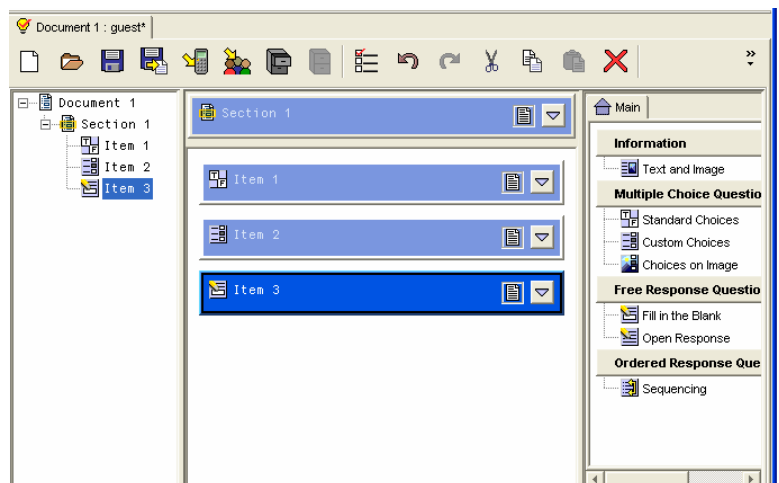


Click on the type of question desired and fill in the fields in the new window. For example to create a True/False Question click on Standard Choices. Then fill in each field with the desired information. The screen to the right shows a true/false question about the signing of the Declaration of Independence. Notice the correct answer is marked. This will be used later for grading.



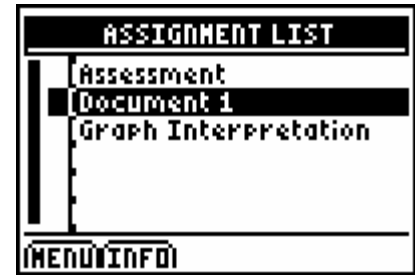
The next screen shows a three question quiz. This quiz contains a true/false question, a multiple choice question, and a fill in the blank question. To send this to the class click on the send to class

icon . All connected handhelds will now have the document and can answer the questions using the LearningCheck Application.

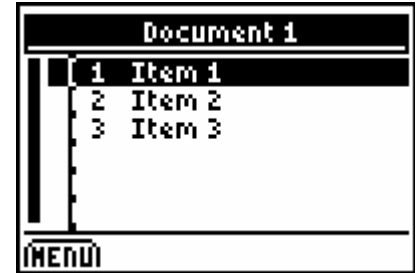


Answering Questions Using LearningCheck

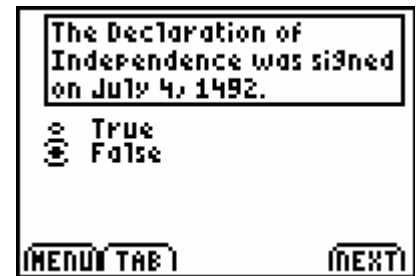
Press [APPS] and choose LearningCheck from the list of applications. After the title screen you will be asked to select an assignment. In this case the assignment is called Document 1. Select it from the list of assignment. Notice students can have multiple assignments on one handheld. After selecting an assignment students are prompted to enter their name then they begin the assignment.



The educational document is now ready for the student work. They may choose to answer questions in order or move to any item at any time. Directional arrows, soft keys (buttons below the words at the bottom of the screen, and the Enter key are the primary keys used to respond to the questions. To answer Item 1 press [ENTER].




To move the cursor to False the student must Tab between choices. To do this press [WINDOW]. This should move the cursor to the word False. To select this option press [ENTER]. This marks the student selection. To move to the next question the student may press [GRAPH].



Collecting and Grading Student Responses

To collect and grade the student responses click on the Class Analysis icon. Then click on the collect from

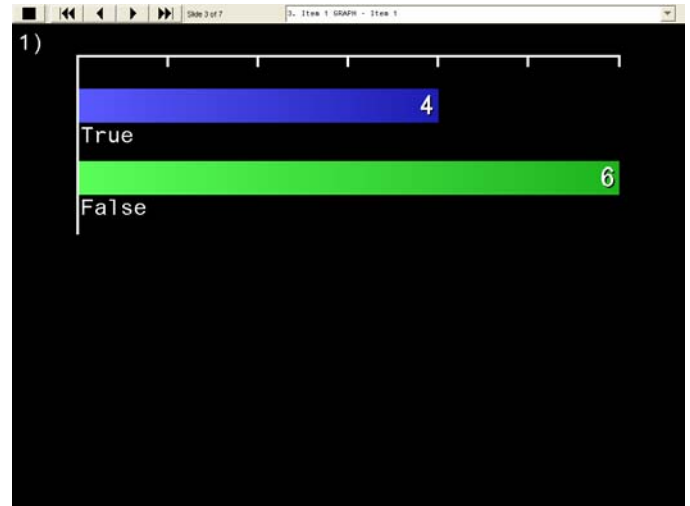
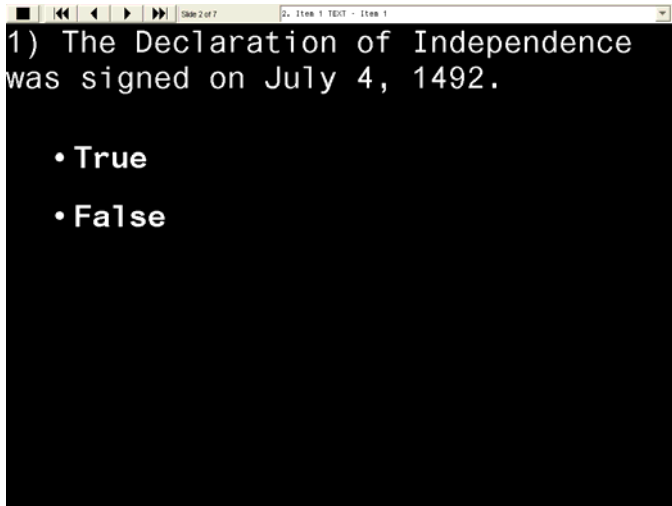
class icon  and select 'Start Transfer'. This will collect and grade all the student's responses. The picture to the right shows the results for the three question quiz for ten students. This information can be saved or copied to a spreadsheet. Also the information can be examined by student or by item for a more detailed analysis.

| Student | 1 | 2 | 3 | Score | % Score |
|---------------|------|------|------|-------|---------|
| Maximum Score | 1.00 | 1.00 | 1.00 | 3.00 | 100% |
| ABBY | 1.00 | 0.00 | 1.00 | 2.00 | 67% |
| BECKY | 1.00 | 1.00 | 1.00 | 3.00 | 100% |
| COREY | 1.00 | 1.00 | 1.00 | 3.00 | 100% |
| EMILY | 0.00 | 0.00 | 0.00 | 0.00 | 0% |
| RENEE | 1.00 | 1.00 | 0.00 | 2.00 | 67% |
| RUDY | 0.00 | 0.00 | 0.00 | 0.00 | 0% |
| SALLY | 0.00 | 1.00 | 0.00 | 1.00 | 33% |
| TORI | 1.00 | 1.00 | 1.00 | 3.00 | 100% |
| TRACY | 1.00 | 1.00 | 0.00 | 2.00 | 67% |
| VINCE | 0.00 | 0.00 | 0.00 | 0.00 | 0% |
| 10 Students | 0.60 | 0.60 | 0.40 | 1.60 | 53% |

Sharing the Student Results with the Class


For confidentiality sake the spreadsheet of graded results should not be shown to the students. However, students can see an anonymous bar chart of

student responses. Click on the Class Results Slide Show icon . This will generate slides like the following.



Students enjoy seeing how they did compared to the class without the fear of embarrassment. Also the teacher can quickly determine if students have mastered a concept or not.

Sending a File to the Class Using the Transfer List

There are two ways to send a file to the class. Click on the 'Add New File to Transfer List' icon  and find the file or simply 'drag and drop' the file to the transfer list. Then click on 'Start Transfer' to send the file. All handheld files except operating systems can be sent via TI-Navigator. This serves two main purposes, quickly sharing information or data and preventing or minimizing student errors.