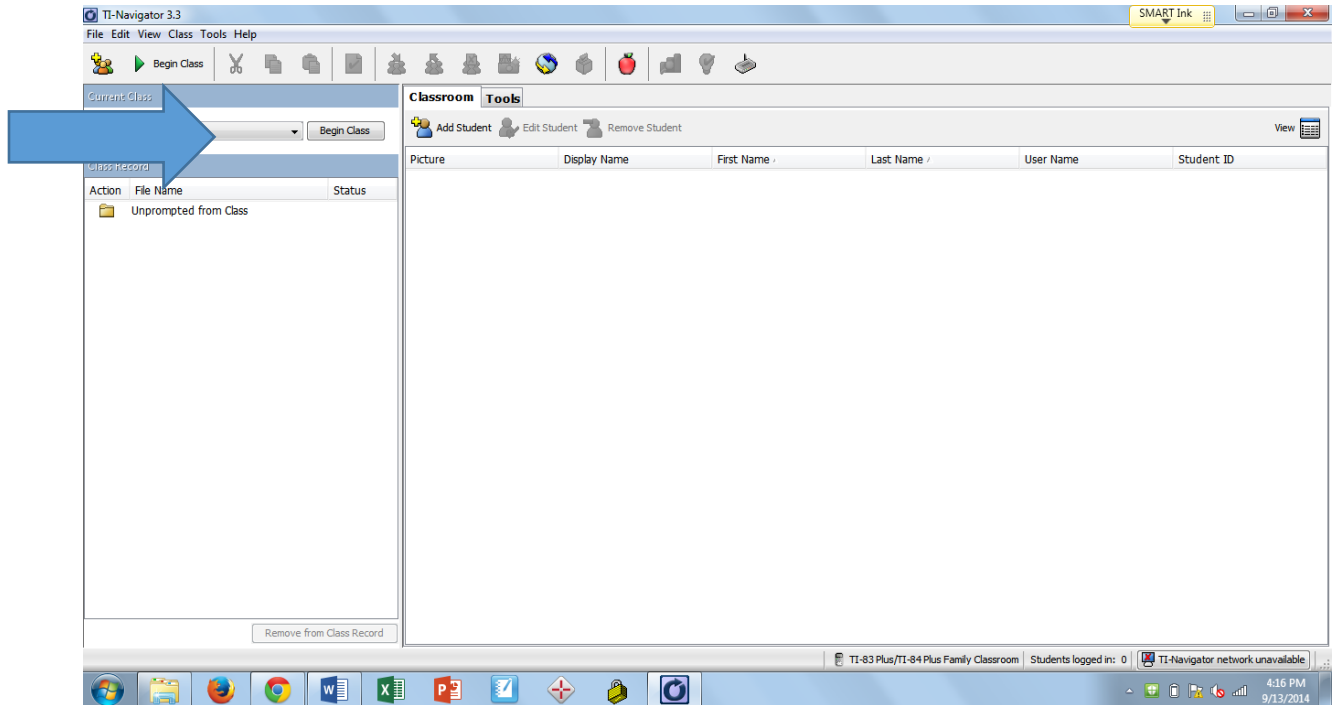


Finding Waldo Navigator Activity

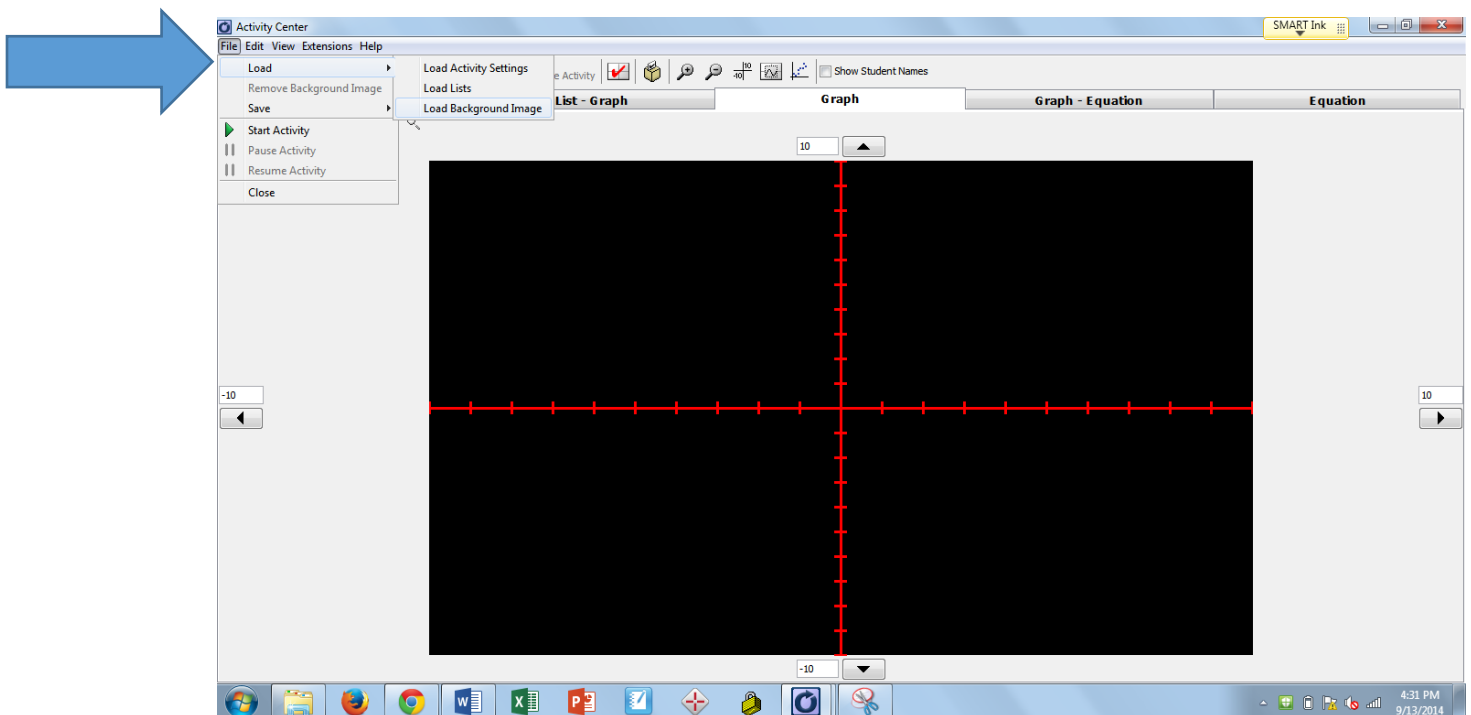
1. Open up Ti-Navigator and Begin Class



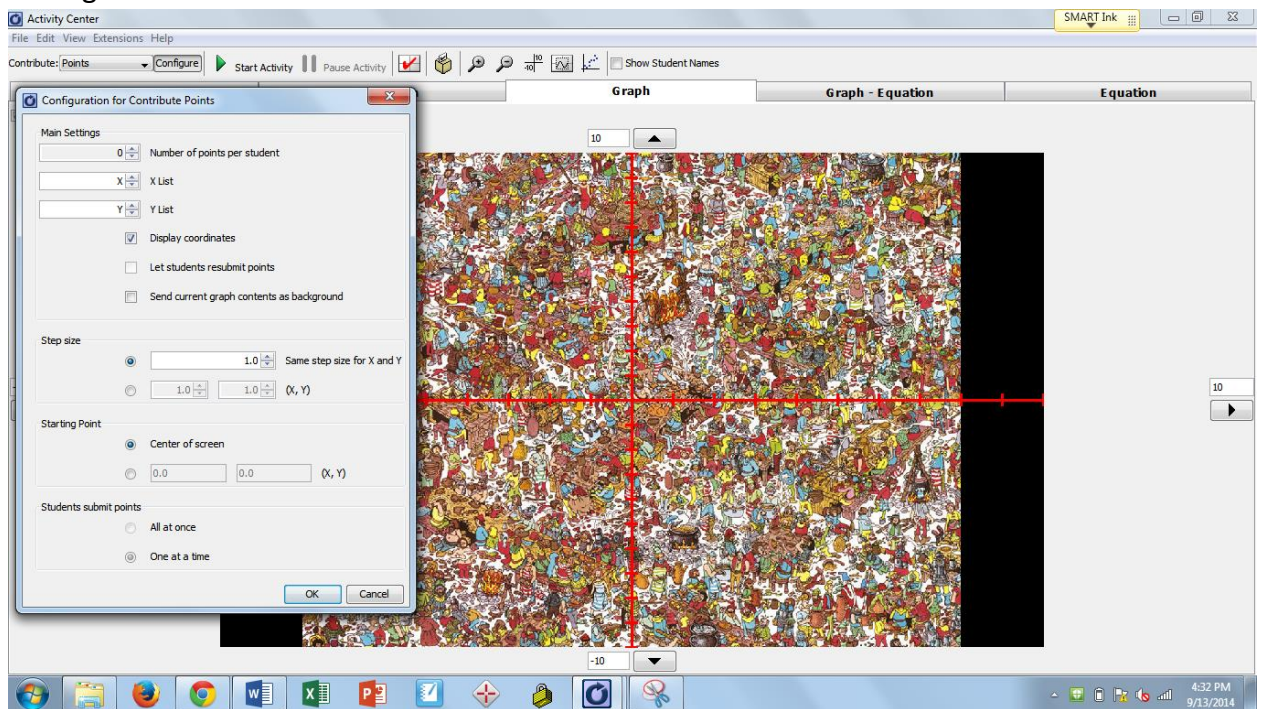
2. Click on Activity Center located in the top Toolbar



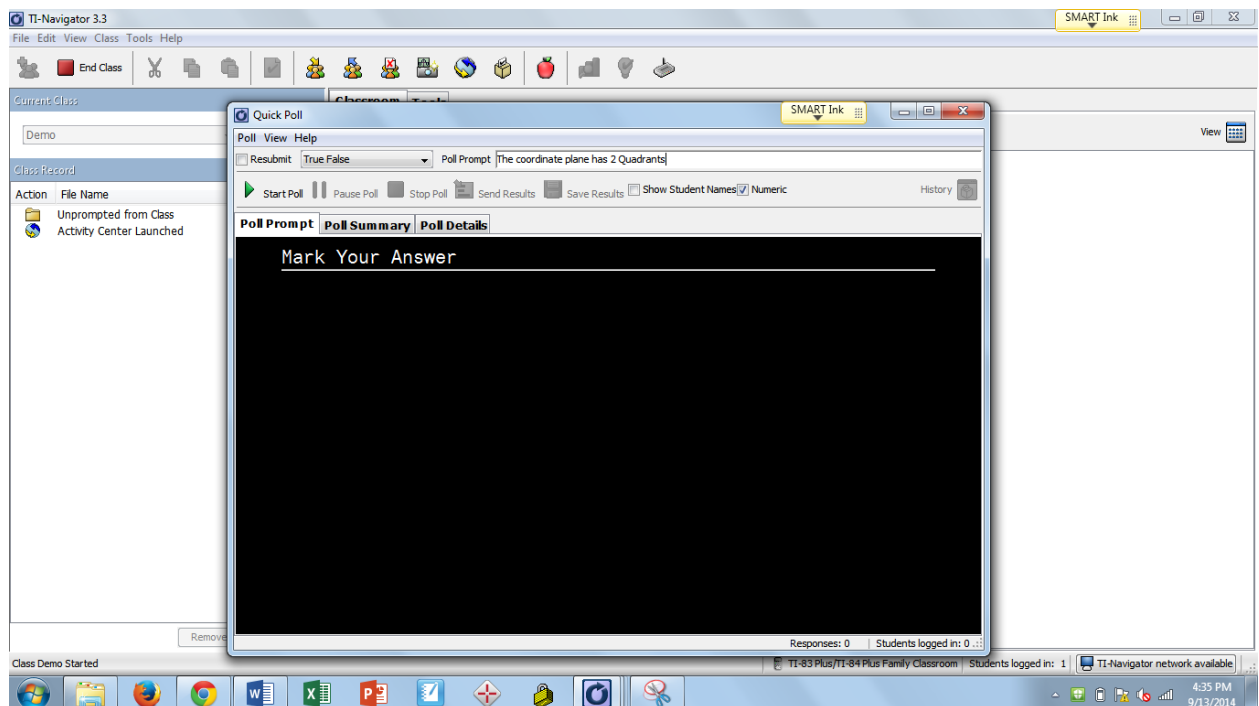
3. In activity center, you want to load a background image



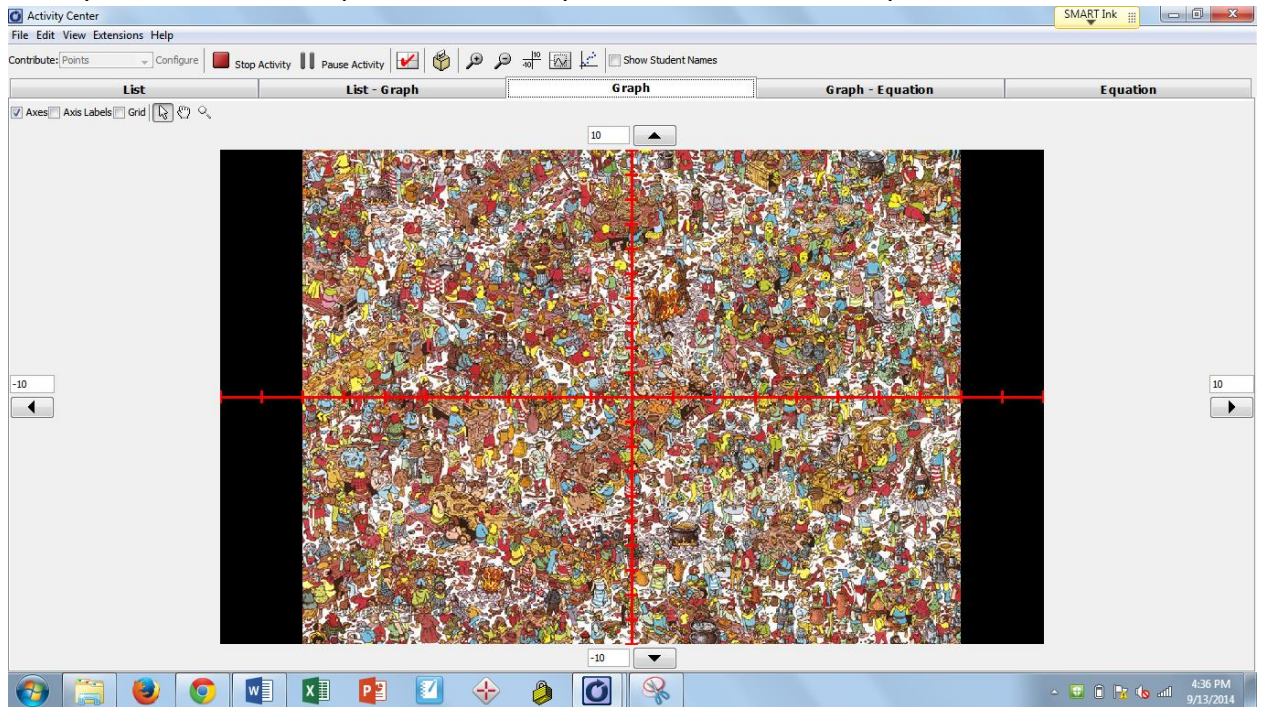
- Here you will choose Waldo1.jpg
- Once the image has loaded, you want to set the contribution to points and configure the settings to 0.



- Minimize this screen and go back to your home screen so students may login and do warm-up.
- Once everyone has logged in, open a quick poll to assess student readiness.



8. You may choose to ask any questions you would like in any format. For example, I would ask Quadrant questions, perhaps axis questions to see the knowledge base of the students.
9. After you have warmed-up, click on Activity Center and Start Activity



10. Students need to click #1 Activity Center on their graphing calculators to enter the activity.
11. There is some flexibility in this part of the activity. You can choose to have the students move their cursor to where waldo is but not give away the answer until everyone has a chance to find him.
12. Once he is located, have the students describe his location using quadrants, coordinates or directions from the origin.
13. To extend this picture, pick another object in the picture, and send the students to find that and have them use graphing terms to tell you where he is located.
14. To assess understanding, I often open a quick poll and ask various questions-
 - a. For Example- All x values are positive (True/False)
 - b. The 3rd Quadrant is in the upper right hand corner (True/False)
 - c. What are the coordinates of the origin (open response)
15. Once this picture has been exhausted, and if time permits you may load Waldo 2.jpg and Waldo 3.jpg
16. When complete, remember to End Class and have students turn off their calculators.