

Teacher Notes



Conflict and Plot

Activity 1 Exploring Conflict and Plot

Activity at a Glance

- ◆ **Subject:** English
- ◆ **Subject Area:** English/Language Arts
- ◆ **Category:** Literary Elements
- ◆ **Topic:** conflict And Plot
- ◆ **Grade Level:** 6 - 12
- ◆ **Prerequisites:** none
- ◆ **Total Teaching Time:** 140 minutes

Materials

- ◆ TI-83 Plus or TI-83 Plus Silver Edition
- ◆ TI External Keyboard
- ◆ TI-Connectivity Cable
- ◆ Unit-to-unit cables
- ◆ NoteFolio™ Application
- ◆ NoteFolio™ file: **PLOT1.8xv**
- ◆ TV and VCR; Video Tape
- ◆ Student Data Sheet: **Terms**
- ◆ Teacher Guide: **Plot and Conflict Diagram**
- ◆ Instructions for the TI-83 Plus

Activity Overview

Students will be introduced to or review the terms *conflict*, *plot*, *exposition*, *rising action*, *climax*, *falling action*, and *resolution*. Using a set of criteria, the teacher will lead the students as a class in analyzing the conflict and plot of a well-known work from popular culture. As the teacher uses a plot diagram as a model, students will follow prompts on their TI-83 Plus to identify and label the conflict and parts of the plot.

Tip

To successfully teach this lesson, the teacher must procure a VCR, TV monitor, and a video copy of a plot-rich work from popular culture. *Moby Dick*, *The Mutiny on the Bounty*, and *Cinderella* are just a few of the many good examples that can be used in this activity. While a cartoon movie may initially seem an odd choice for older students, these movies have clear plots, are readily available, and contain acceptable content. They also allow the students to focus more easily on the plot.

For more advanced students, analyzing the plot from a mystery could provide great fun and a great challenge.

Directions

Before the Activity Begins

Select and obtain the movie to be used in plot analysis. Prepare a transparency of the **Plot and Conflict Diagram**. Send the **PLOT1.8xv** NoteFolio™ file to the student devices. Decide if the students will complete this file during the movie, during the class analysis, or after the class analysis is completed.

Instructions for sending files from one device to another are included at the end of this activity. Also included are instructions for using the NoteFolio™ Application.

During the Activity

The teacher should begin class by introducing (or reviewing) the terms contained on the next page of this activity. View the movie as a class. If the students are to use the NoteFolio™ file to take notes on the plot during the film, instruct them in the use of the NoteFolio™ file. (Note: The file is structured in the same way as the transparency you prepared for the class analysis.)

During and/or after viewing the movie, the teacher should lead the students in identifying and labeling the parts of the plot and the conflict portrayed in the movie. As the students identify these plot parts, the teacher records them on the **Plot and Conflict Diagram** transparency. During this analysis, the teacher should clear any misconceptions the students have regarding plot or conflict.

The **Plot and Conflict Diagram** transparency models the analysis the students will perform in this activity and in the remaining activities in this lesson. The NoteFolio™ files contain prompts that help guide students to identify, label, and describe the plot and conflict of any story. These prompts lead the students through their analysis in the same order as presented on the chart.

After the Activity

The teacher should recap the main points of plot development and conflict, then ask the students if they have any questions about these concepts or the way in which the class analyzed the plot of the movie.

Student Data Sheet

Name: _____

Terms

Date: _____

The *plot* is the action or main events of a story from beginning to end.

The *exposition* is the beginning of the plot. It introduces the reader to the characters, setting, and general background information.

The *rising action* of the plot is where the author develops events that define the conflict of the story. In this part of the plot, the characters are struggling to solve the problem.

The *climax* is the turning point and/or crisis of the story. This is usually a dramatic event in which the characters begin to resolve the conflict based on a major happening in the story.

The *falling action* is the part where the characters arrive at a solution to the problem.

The *resolution* is the last part of the plot. It brings the story to an end once the conflict is resolved.

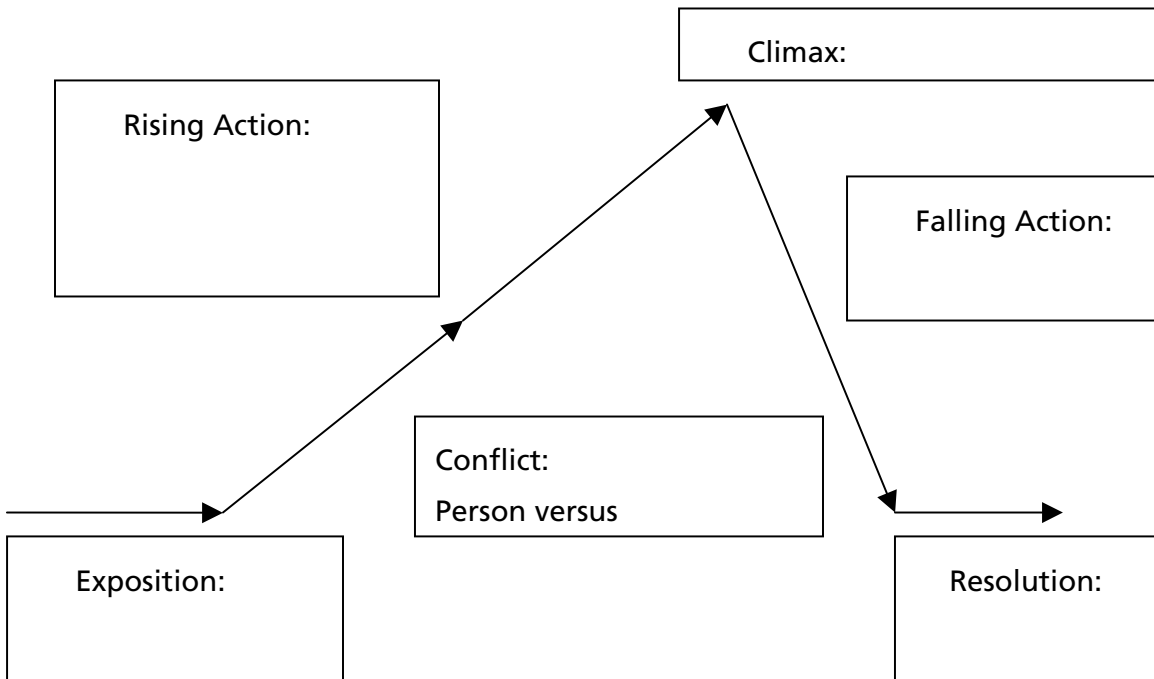
The *conflict* is the problem or problems that the main characters face. Conflict can be internal, external, or both.

Internal conflict is a problem the main character faces from within his/her mind or personal circumstance. This is generally known as *person vs. self*.

External conflict is a problem that the main character faces from an outside force. This type of conflict can be *person versus person*, *person versus nature*, *person versus society*, or *person versus fate*.

Teacher Guide
Plot and Conflict Diagram

Story: _____



Identify and describe the **conflict** that drives the plot. Is it **internal**, **external**, or **both**?

Teacher Instructions**Transferring files from one TI-83 Plus to another**

1. Connect the devices using the unit-to-unit cable. Press the cable firmly into the port at the base of each device.
2. Prepare the student (or receiving) device to receive data.

- a. Turn the device on.
- b. Press **[2nd] [LINK]** to prepare the TI-83 Plus to receive data.

```
SEND RECEIVE
1: All+...
2: All-...
3: Prgm...
4: List...
5: Lists to TI82...
6: GDB...
7↓Pic...
```

- c. Highlight **RECEIVE** by pressing **[↓]**.

```
SEND RECEIVE
1: All+...
2: All-...
3: Prgm...
4: List...
5: Lists to TI82...
6: GDB...
7↓Pic...
RECEIVE
```

- d. Press **[ENTER]**. **Waiting** is displayed on the device.

```
WAITING...
```

3. Prepare the teacher's (or sending) device to send data.
- a. Turn the device on.

- b. Press **[2nd] [LINK]** to prepare the device for linking.

```
SEND RECEIVE
1: All+...
2: All-...
3: Prgm...
4: List...
5: Lists to TI82...
6: GDB...
7↓Pic...
```

- c. Press \uparrow or \downarrow until **D:AppVars** is highlighted.

```

SEND RECEIVE
BTString...
C:Apps...
D:AppVars...
E:Group...
F:SendId
G:SendSW
H:Back Up...
    
```

- d. Press ENTER to view the AppVars. Move the cursor to the file (AppVar) you want to send, and press ENTER . In these instructions, the **ECONDEF** file is used.

```

SELECT TRANSMIT
*Address AVAR
▶*ECONDEF AVAR
*ORGINFO AVAR
*SAMPLEST AVAR
*Schedule AVAR
*TIINFO AVAR
TISCRSLT AVAR
    
```

- e. Press \rightarrow to highlight **TRANSMIT**. Press ENTER to start data transfer.

```

SELECT TRANSMIT
▶Transmit
    
```

4. If the transfer is successful, the sending and receiving devices will display the following on their screens. Download the AppVar to other students using the same method. Once a student has the file on his or her device, he or she can share it with other students by using the procedure for the teacher's (sending) device.

```

▶ ECONDEF AVAR
Done
    
```

Teacher TI-83 Plus

```

Receiving...
▶ ECONDEF AVAR
Done
    
```

Student TI-83 Plus

Accessing the NoteFolio™ Application on the TI-83 Plus

The following procedure enables you to access the NoteFolio™ Application. It assumes that the software is already installed on the device.

Note: NoteFolio™ App is most efficiently used on the TI-83 Plus with the TI Keyboard.

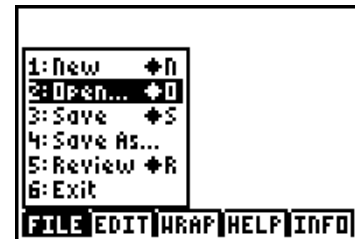
1. Turn on the device and press **[APPS]** to display the list of installed applications. Select the **NoteFolio** Application by using **[↑]** **[↓]** to scroll to it in the list.



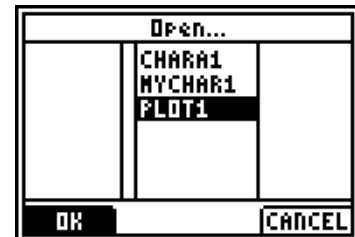
2. Press **[ENTER]**. Press any key to clear the NoteFolio™ App Introduction screen. A blank (new) NoteFolio™ App file is initially displayed.



3. To open the **PLOT1.8xv** file, press the **MENU** key (the **[GRAPH]** key.)

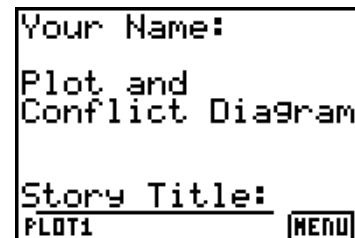


4. Highlight the **Open** option or press **2**. Highlight the **PLOT1** file.

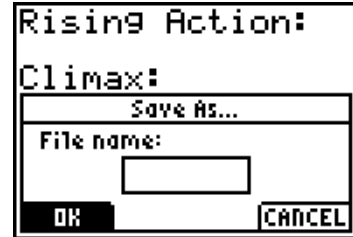


5. Press **[ENTER]**. The file is opened. Students should complete the assignment.

Note: If you are not using a TI Keyboard, remember to press the **[ALPHA]** key to type letters.



- When the file is complete, press **MENU**. Students can save the file under the same name by selecting **Save** or they can save the file under a new name by selecting **Save As**.



- When the new file name is entered, press **OK** (the **Y=** key).

To exit the application, press **MENU** and select **6: Exit**.

