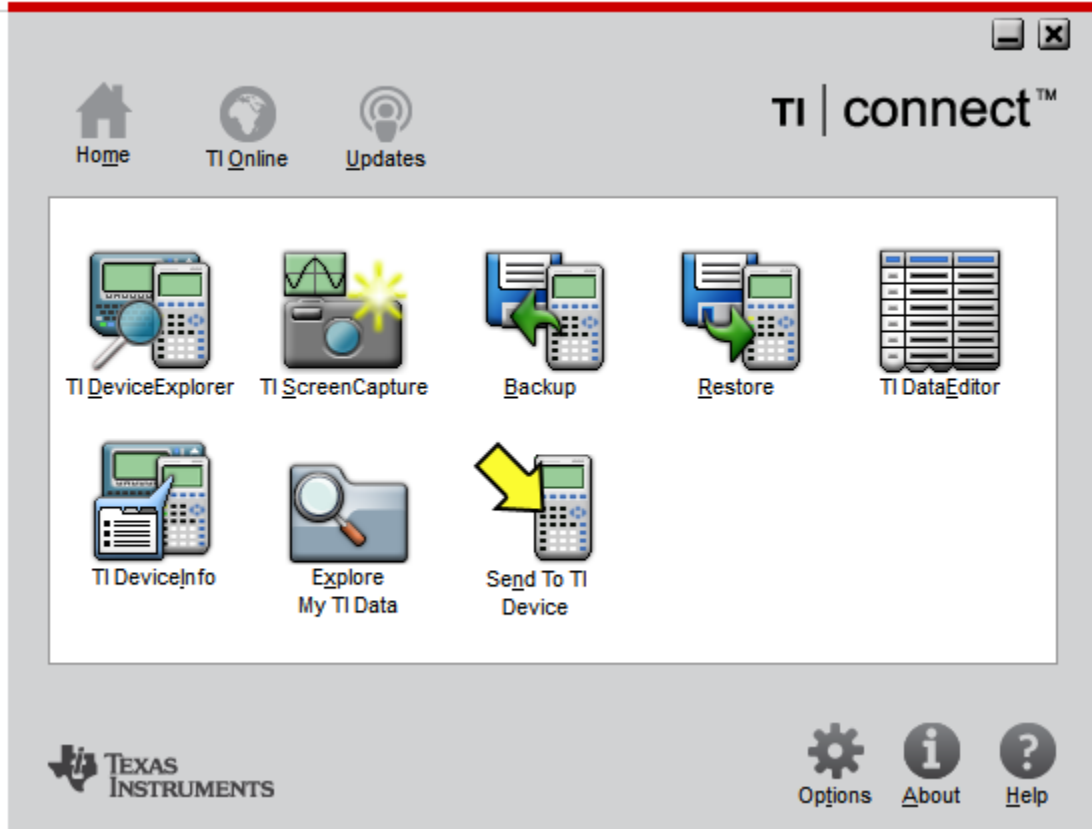
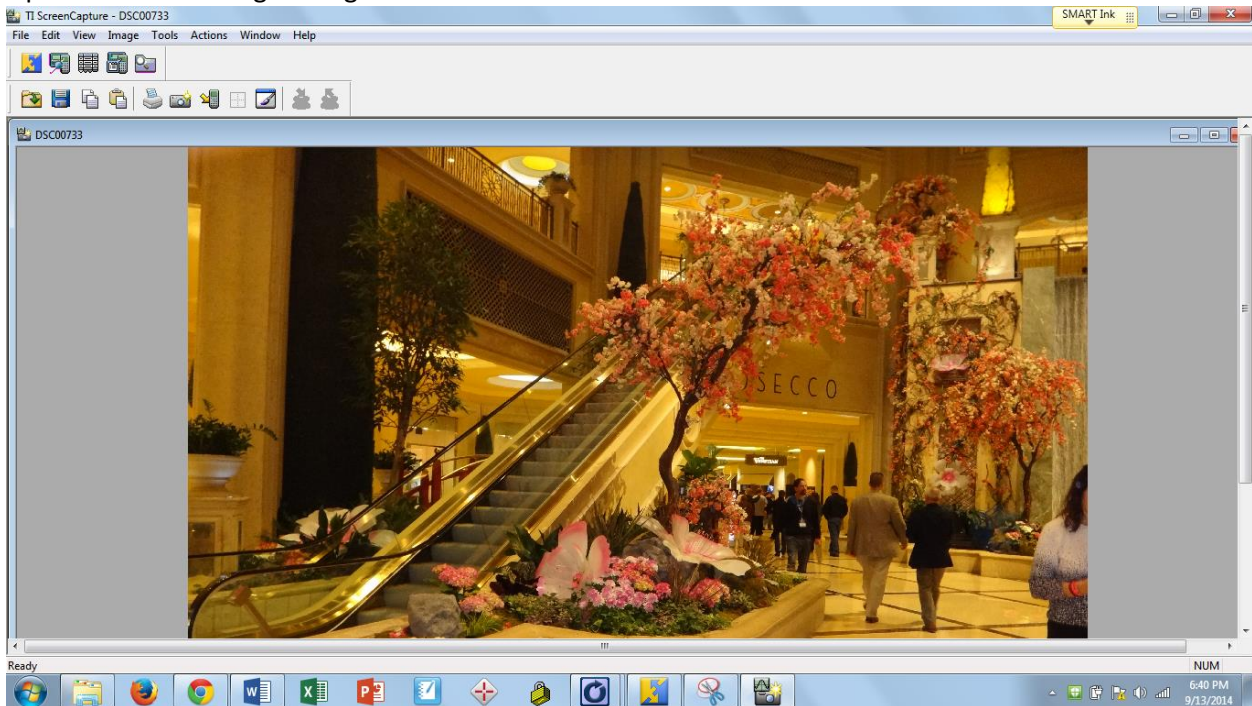


Creating graphs using Images from Vegas

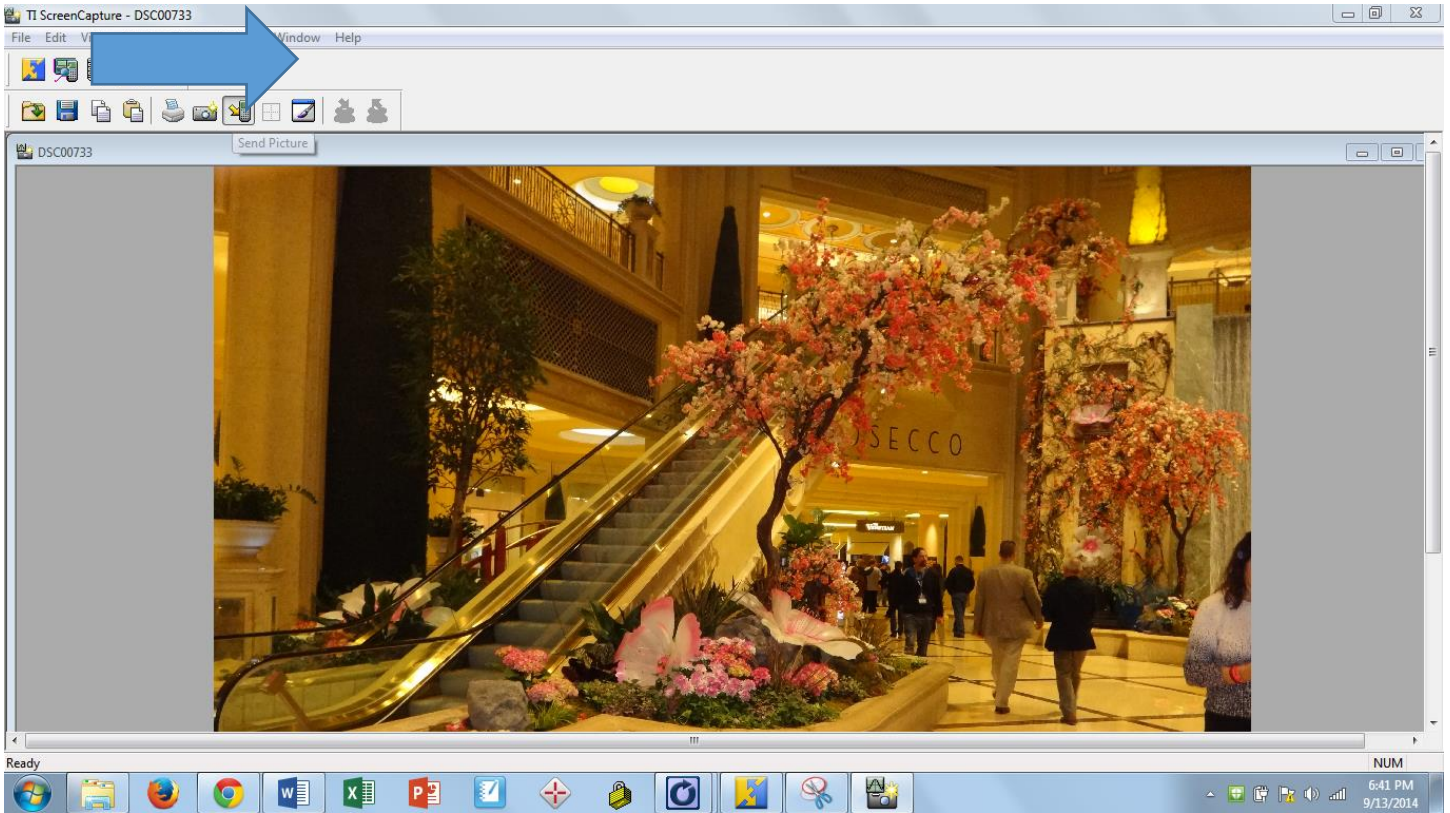
1. Download all 5 images to a convenient location.
2. Open Ti-Connect on your computer and attach your TI-84C to your computer



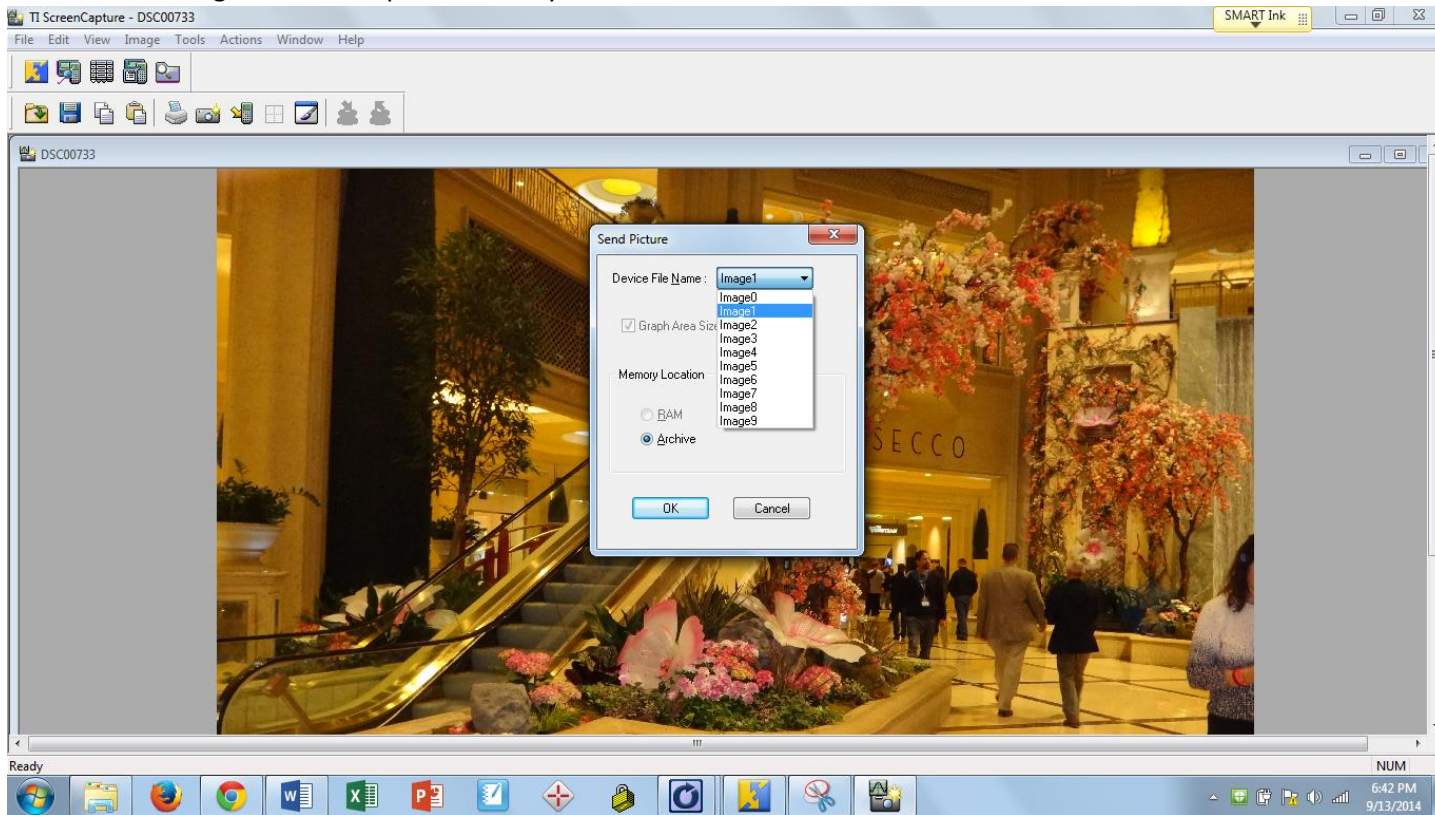
3. Click on TI-Screen Capture
4. Open the first Las Vegas Image from the file tab.



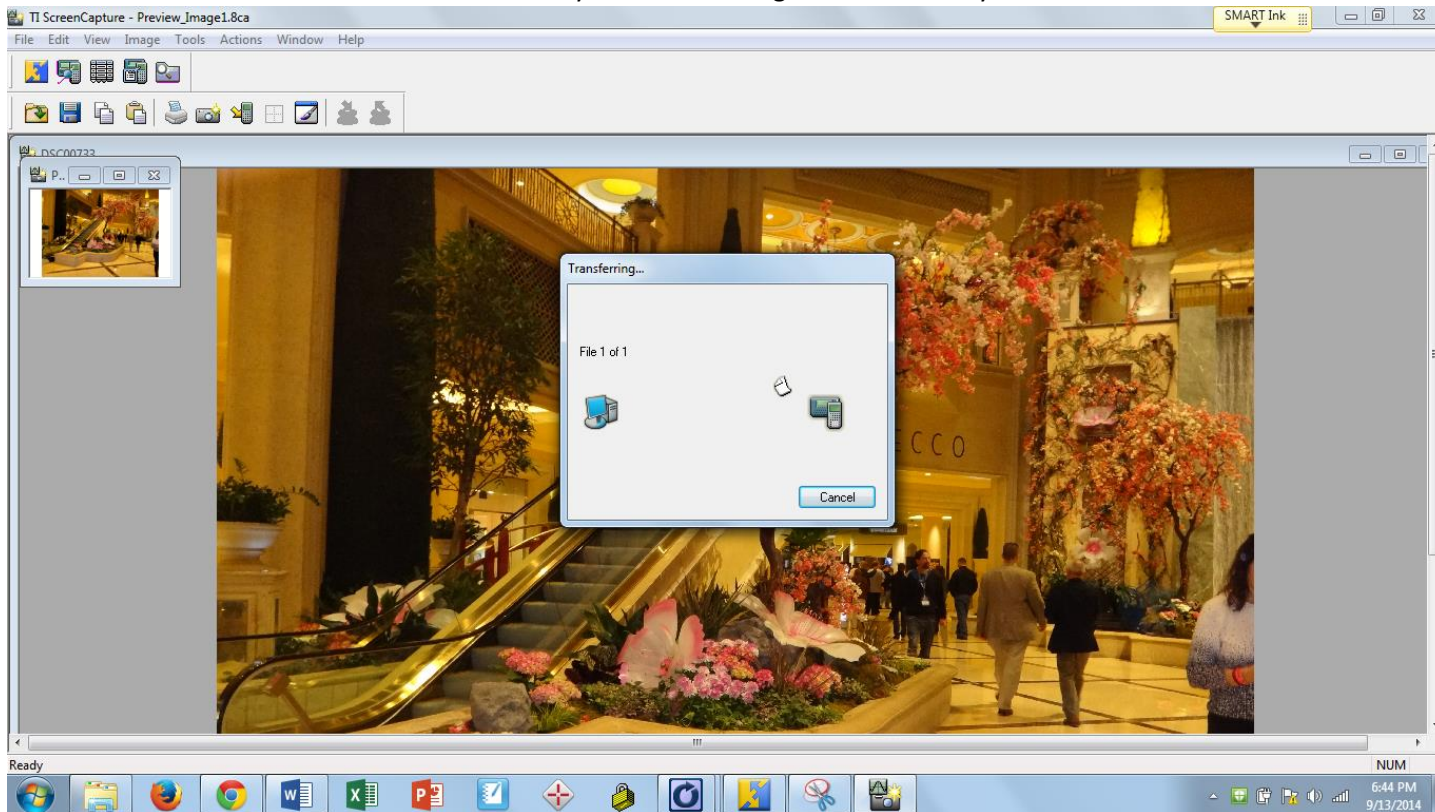
5. Click the send to TI device icon



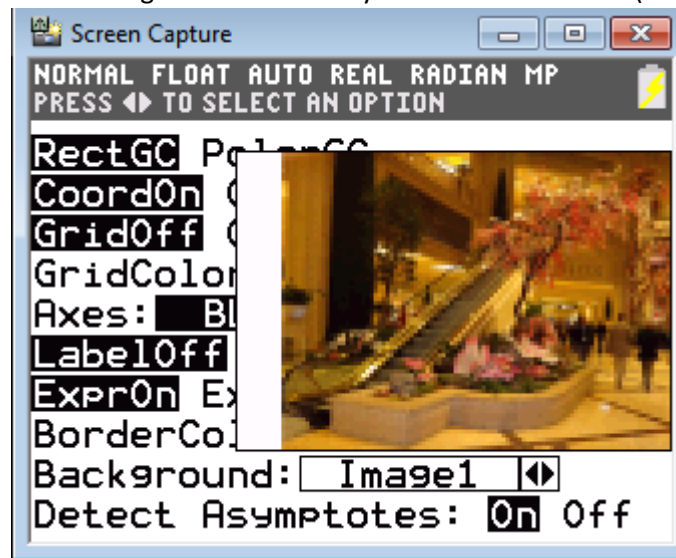
6. Choose what image to save the picture as on your TI-84C device.



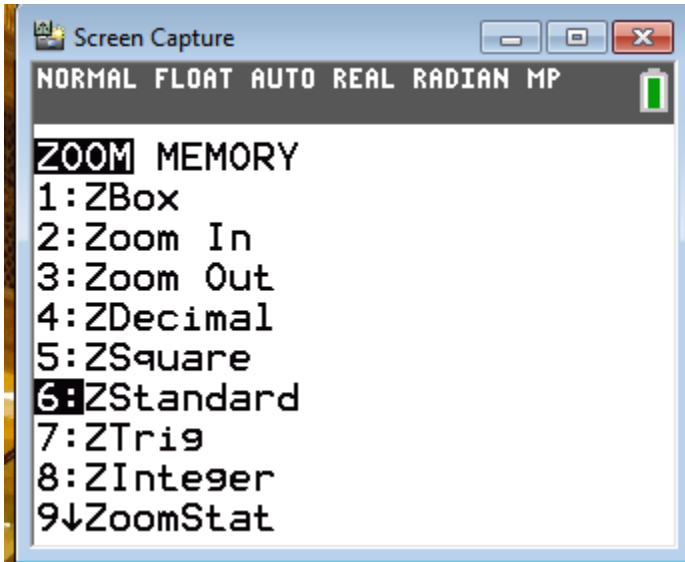
7. Click ok and Ti-Connect will automatically format the image and send it to your calculator.



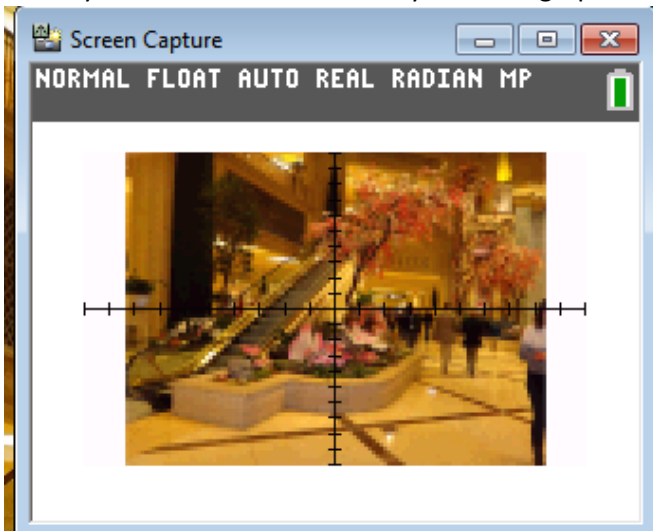
8. Once the image has been transferred, go to your TI-84C and click 2nd Format (above the Zoom key) Choose the image location that has the first Las Vegas Photo. You may then exit that screen (2nd Quit)



9. To setup the window, click Zoom and select ZStandard



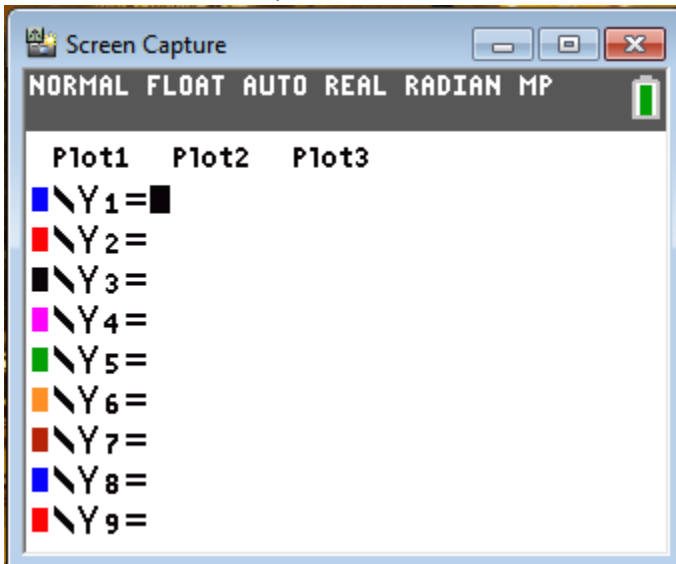
10. When you select enter it will take you to the graph screen



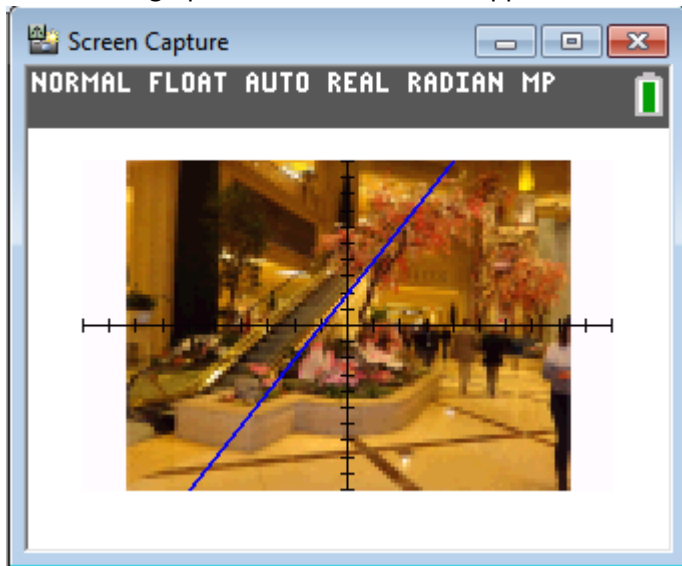
11. Students need to come up with a line to fit the slope of the escalator.

12. To insert an equation students click y=

13. Students enter their equations into Y1



14. Then select graph and their line should appear



15. Students may continue to change their equation until they find a line that matches up with the escalator.

16. Class Discussion would be important to assist those that may not have been able to find a matching equation and also to show the students how many different equations can line up with the same escalator.

17. If you choose, you may repeat with additional images.