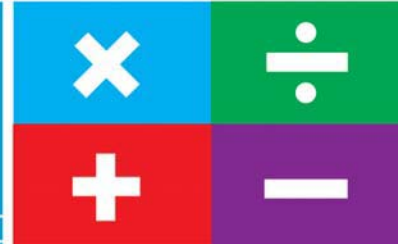


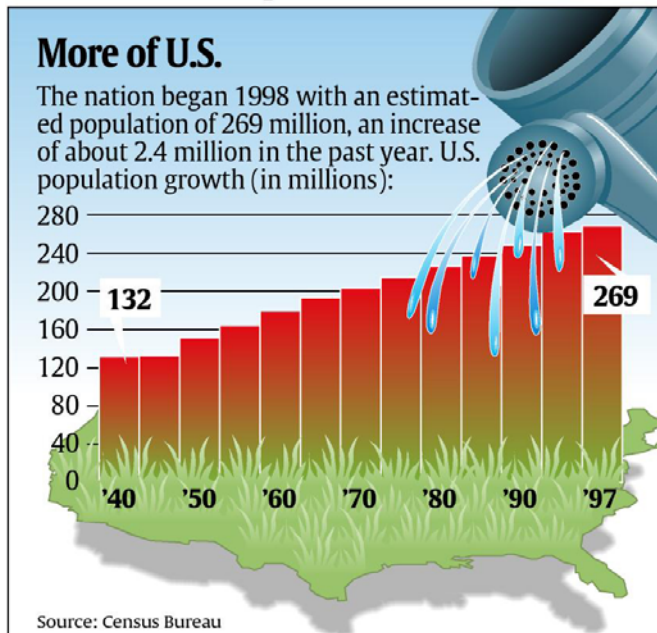
MATH TODAY™ Student Edition



Activity 4:

More of U.S.

USA TODAY Snapshots



By Cindy Hall and Marcy E. Mullins, USA TODAY

Activity Overview:

This USA TODAY Snapshot shows the U.S. population for the years 1940 – 1997. Examining the rate of population growth can influence many decisions.

What is the fastest growing city in the United States? Which regions are gaining population? The growth or decline in population is an important trend that governments and businesses are interested in knowing about. This information is an important resource for data about the people and economy.

In this activity, you will determine the growth rate of the U.S. population, and find a linear model from the data to predict the population in the future if this trend continues.

Focus Questions:

- Q. What is the rate of change in population per year? What would be the appropriate units for this value?
- Q. Determine the linear model that would represent the growth in population over the given time period.
- Q. Based on the data, what will be the estimated population of the United States in 2010?
- Q. What is the correlation between years and population growth?

TI | **navigator.**

For use with the TI-Navigator™
Classroom Learning System

