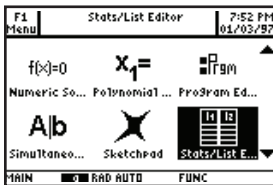


# Statistics with List Editor App

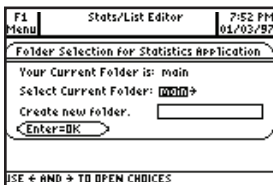
Voyage™ 200

TI-89  
Titanium

This App provides the functionality students need for an Advanced Placement or college-level statistics course. The list editor provides a means for viewing, editing, and working with data lists. The statistics portion of the App delivers many advanced statistics capabilities including, but not limited to, distributions, tests, regressions, random sampling, goodness of fit, and inferential statistics.



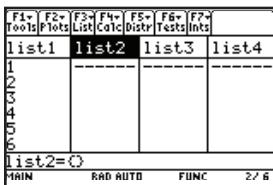
**1**  
To enter the App, press the [APPS] key, highlight "Stats/List Editor" and press [ENTER].



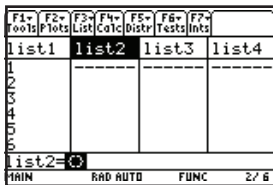
**2**  
Select the main folder on the next screen. Press [ENTER] to see the list editor screen. If a different screen appears, there may already be data in the lists. To clear the lists, use the up arrow key to highlight the list name, press [ENTER] to highlight all data, then [CLEAR] [ENTER] to delete.



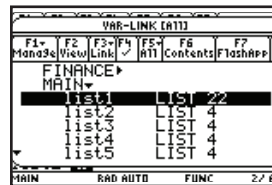
**3**  
The heading "list 1" will be highlighted. Use the down arrow to enter the editor. To enter the list {1, 2, 3, 4, 5, 6}, press each number, followed by the [ENTER] key.



**4**  
Get to the top of list 1 by pressing the blue [2nd] key, followed by the up arrow. Press the up arrow one more time to highlight "list 1," then press the right arrow to highlight "list 2."



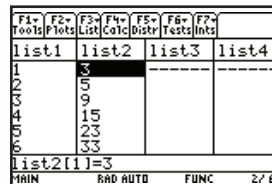
**5**  
To use the values in list 1 to define list 2, press [ENTER] while "list 2" is highlighted. The entry line will become highlighted also.



**6**  
Enter "list2 = list1<sup>2</sup> – list 1 + 3." To access the command "list 1," press [F3], then select "1.Names" and press [ENTER]. Arrow down to "list 1."



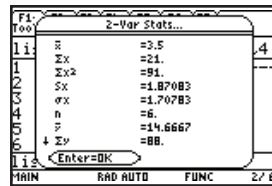
**7**  
Press [ENTER] To finish the equation, press [^], [2], [^], [F3], [1], down arrow twice, [ENTER], [+], [3].



**8**  
Press [ENTER]. The calculated values will populate list 2.



**9**  
Calculate 2-variable statistics for these lists by pressing [F4] "Calc", then selecting "2: 2-Var Stats. ..." A dialog box appears.



**10**  
In the field "X List:", enter list 1 by pressing [2nd] followed by the [ ] key to access "Var-Link." Scroll down to "list 1" using the down arrow key, or press [4] (the calculator is in alpha mode; pressing [4] allows the user to access the alphabet key above [4]). Select by pressing [ENTER]. Repeat for the field "Y List," this time selecting "list 2." Press [ENTER] twice to see the 2-variable statistics.