

Appendix B

Using the TI-GRAPH LINK

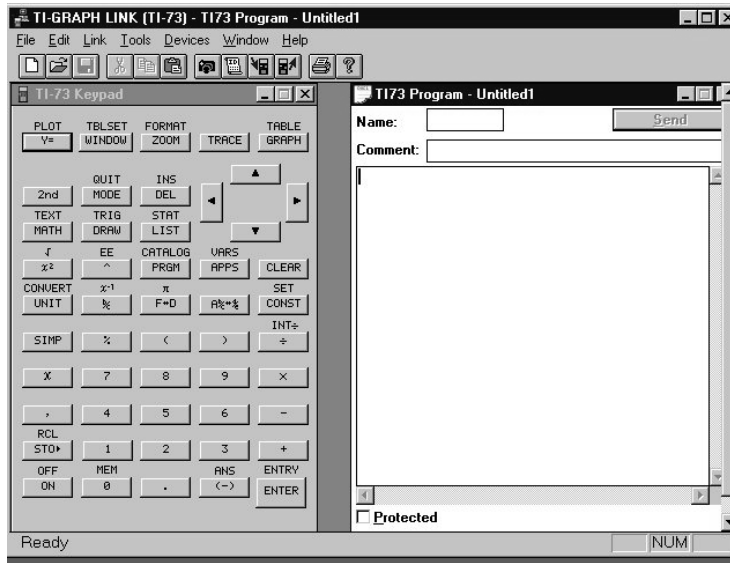
Introduction

Using the TI-GRAPH LINK™ can enhance several activities in this book. This program is used with a special cable to transfer information from the TI-73 to the computer and vice-versa. The Flash™ memory capabilities of the TI-73 rely on the TI-GRAPH LINK. Instructions on how to use the TI-GRAPH LINK are included in the software under the Help menu. Support on the program can be found through the 1-800-TI-CARES phone number and the TI web page (<http://www.ti.com/calc>).

Using the TI-GRAPH LINK

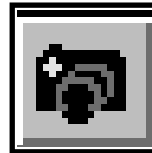
Connect the TI-GRAPH LINK cable to an open port on the back of your computer. The name of this port (for example, COM1) will be needed for the software configuration. The software comes in Windows and Mac versions.

Start the program and connect the calculator to the cable through the link port on the bottom. When transferring files (programs, lists, and so forth) from the TI-73 using the TI-GRAPH LINK, the calculator should be turned on and in the Home Screen. If you place the calculator in the Link application, you will get an error. When collecting screen images from the TI-73, most of the time you can be anywhere you wish.

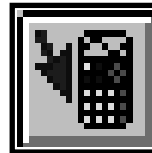


The initial screen has several icons to execute common tasks. These include:

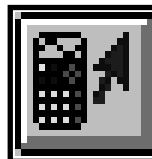
Capturing the screen displayed on the TI-73



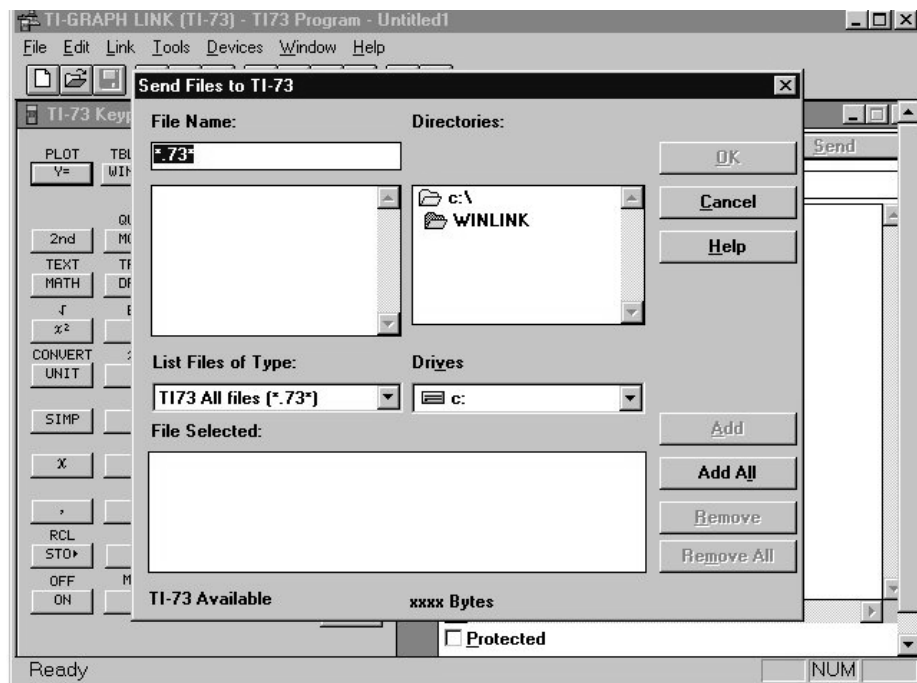
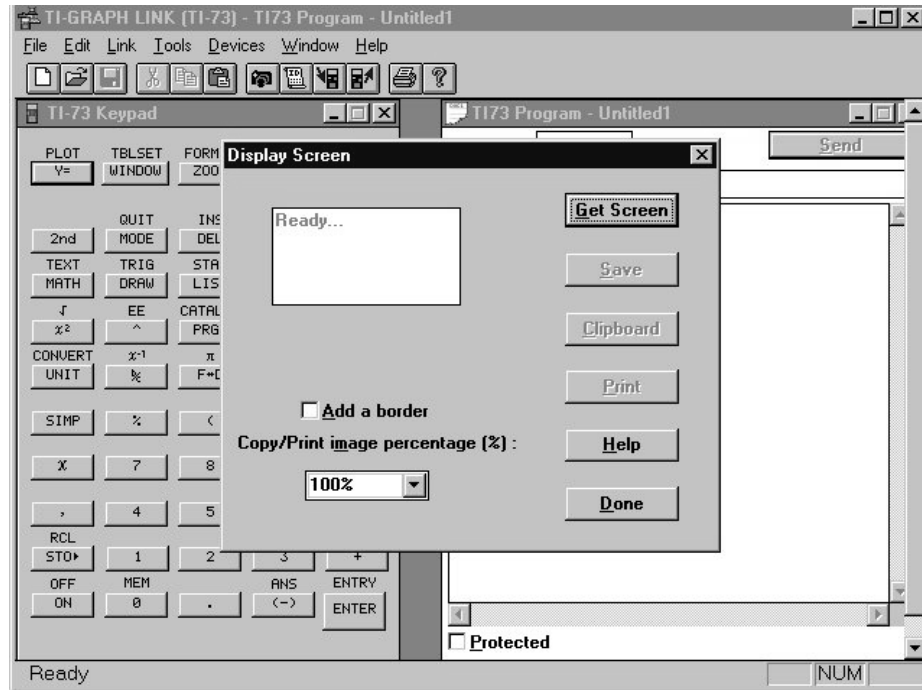
Sending files to the TI-73



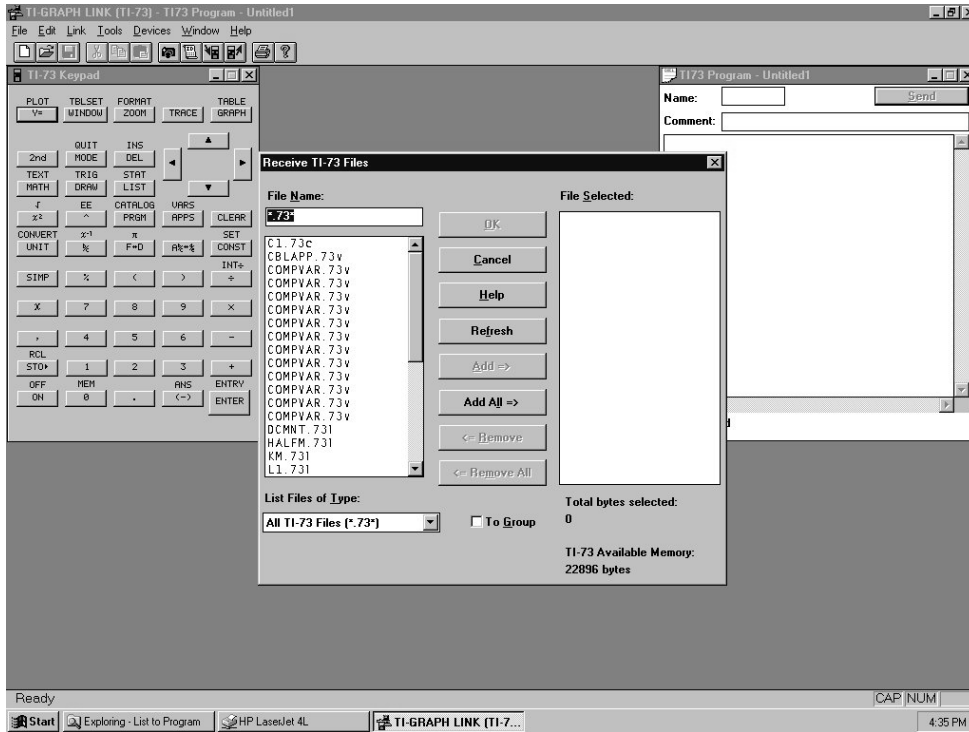
Receiving files from the TI-73



To use any of the options, click on the appropriate icon or select it from the Link menu. In the case of the screen capture, once you have the image that you want on the screen of the TI-73, click Get Screen. Then click the appropriate option and repeat the Get Screen option for another image off of the TI-73, or select Done.



For the transferring of files from the computer to the TI-73, press the appropriate icon and select the files needed to send to the TI-73.



For the transfer of files from the TI-73 to the computer, select the appropriate icon and then select (by double-clicking) the files to transfer and then click on **OK**. Make sure you note in which directory you place the files. Note also that you can group files as needed.