

Using TI LearningCheck™ Creator and Class Analysis

Overview

This tour details the use of TI LearningCheck Creator and Class Analysis to:

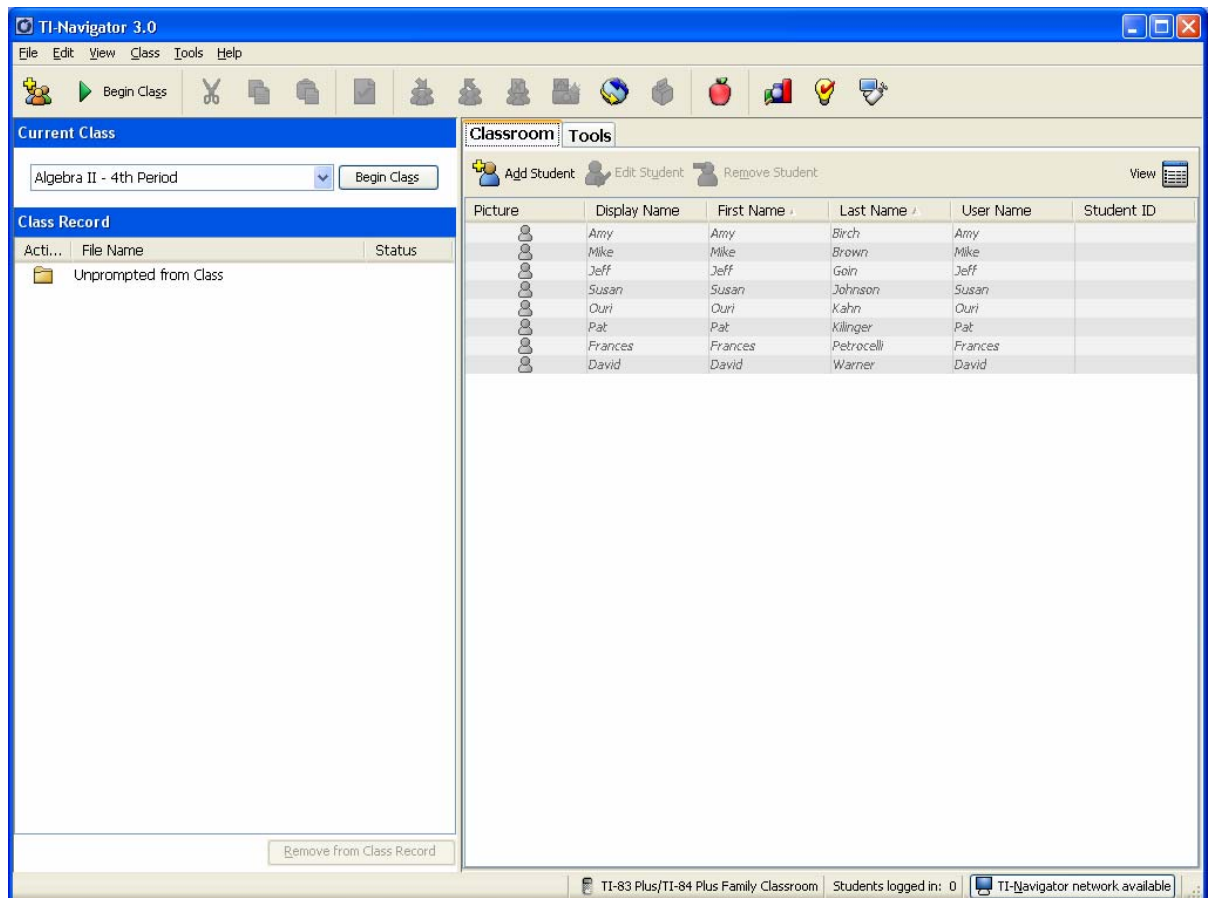
1. Create a simple assessment file with LearningCheck Creator
2. Send it to the class
3. Collect the answers using Class Analysis

Note: This Tour covers very basic operation of TI LearningCheck Creator and Class Analysis. For comprehensive instructions on using these tools for assessment, please see their respective help files.

1. Launch the TI-Navigator Software

Click **Start > Programs > TI Tools > TI-Navigator > TI-Navigator**.

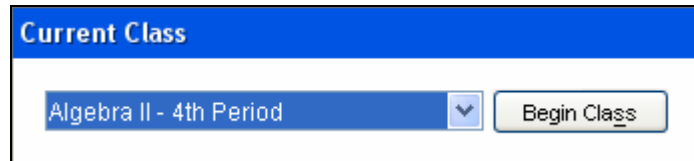
The TI-Navigator computer home screen opens.



2. Start a Class

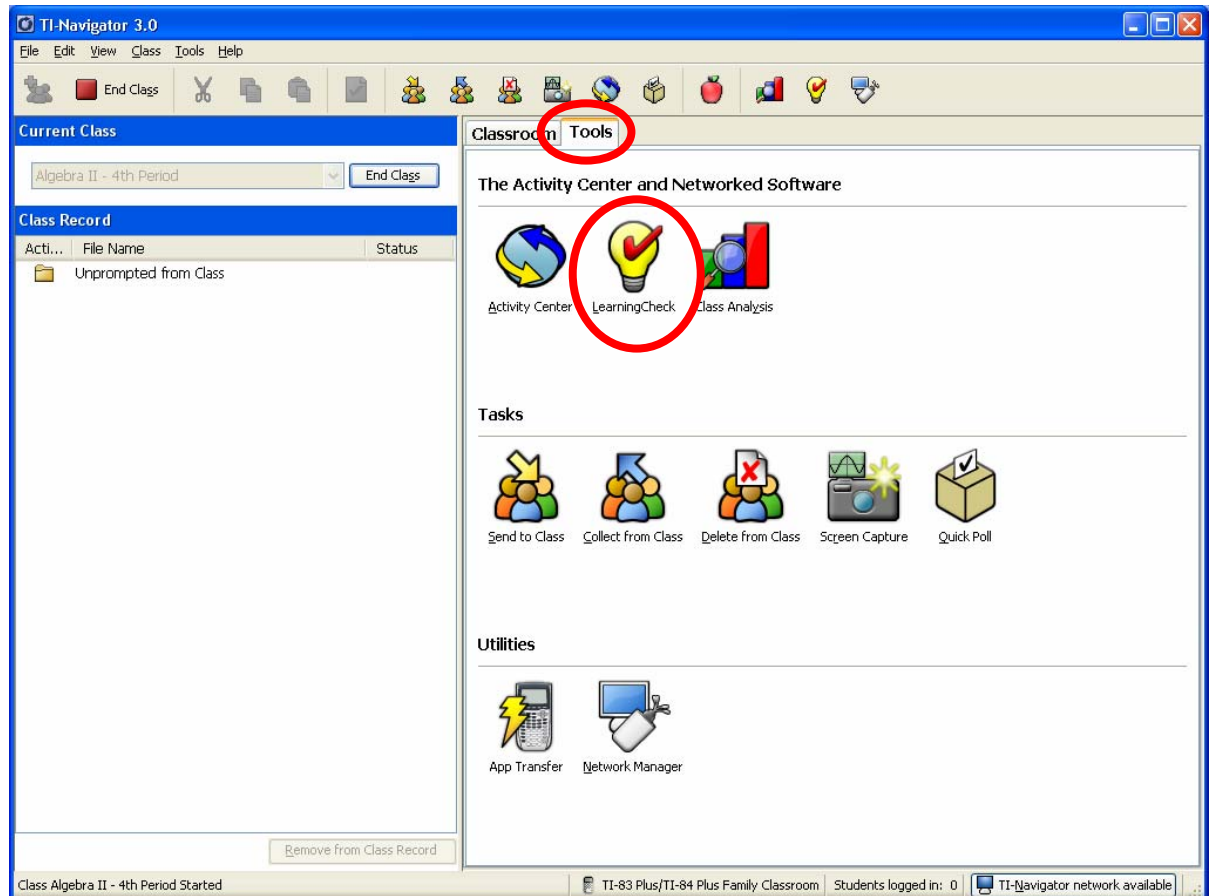
Assure that your TI-Navigator™ network hardware is connected and powered and calculators containing the necessary apps are connected.

Choose a Class to begin in the **Current Class** selector and click **Begin Class**.



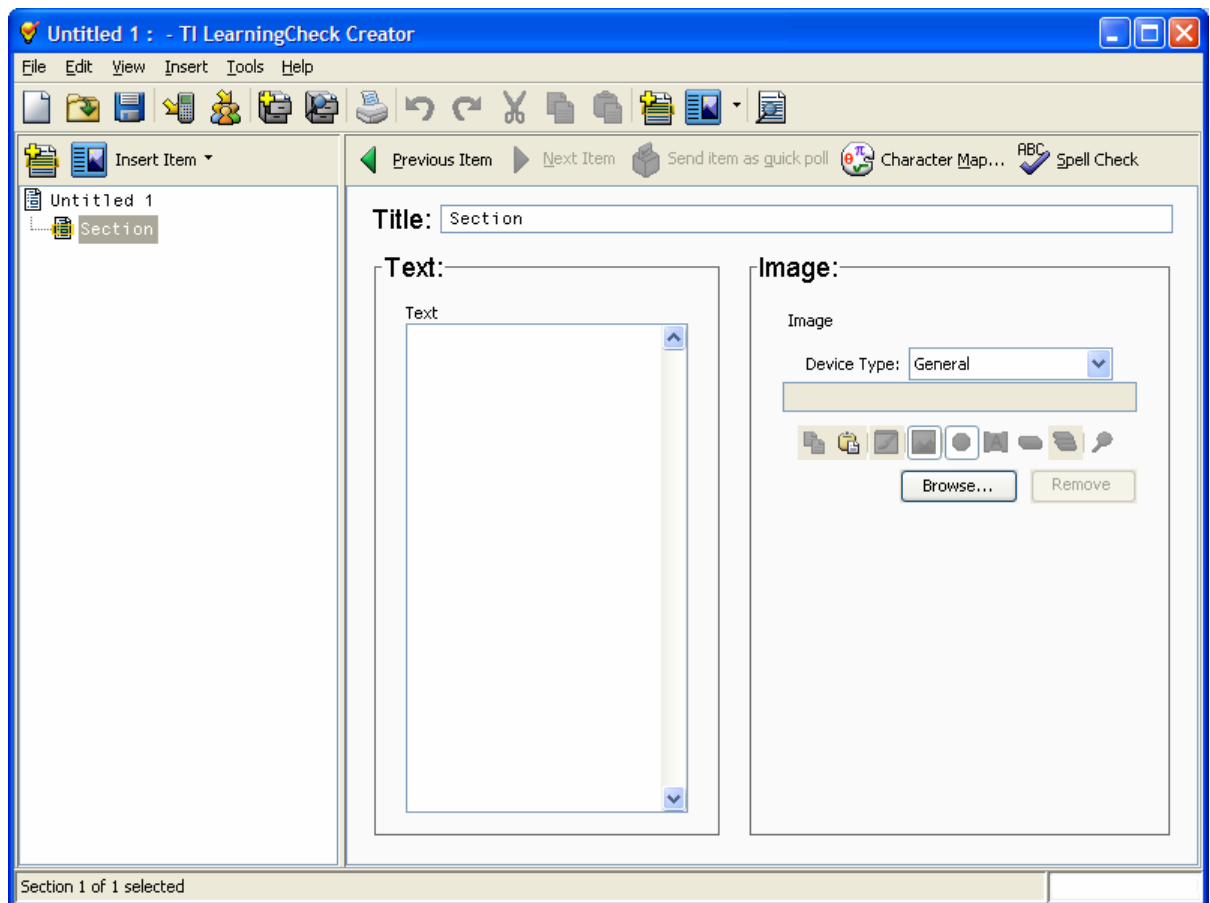
3. Open the Tools Tab and launch LearningCheck™

A. Click the **Tools** tab near the upper middle of the home screen.



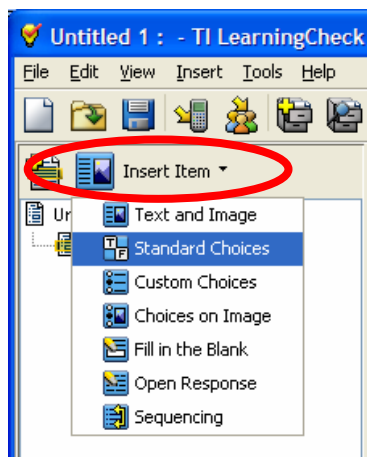
B. Click the **LearningCheck** icon.

TI-LearningCheck™ Creator opens.



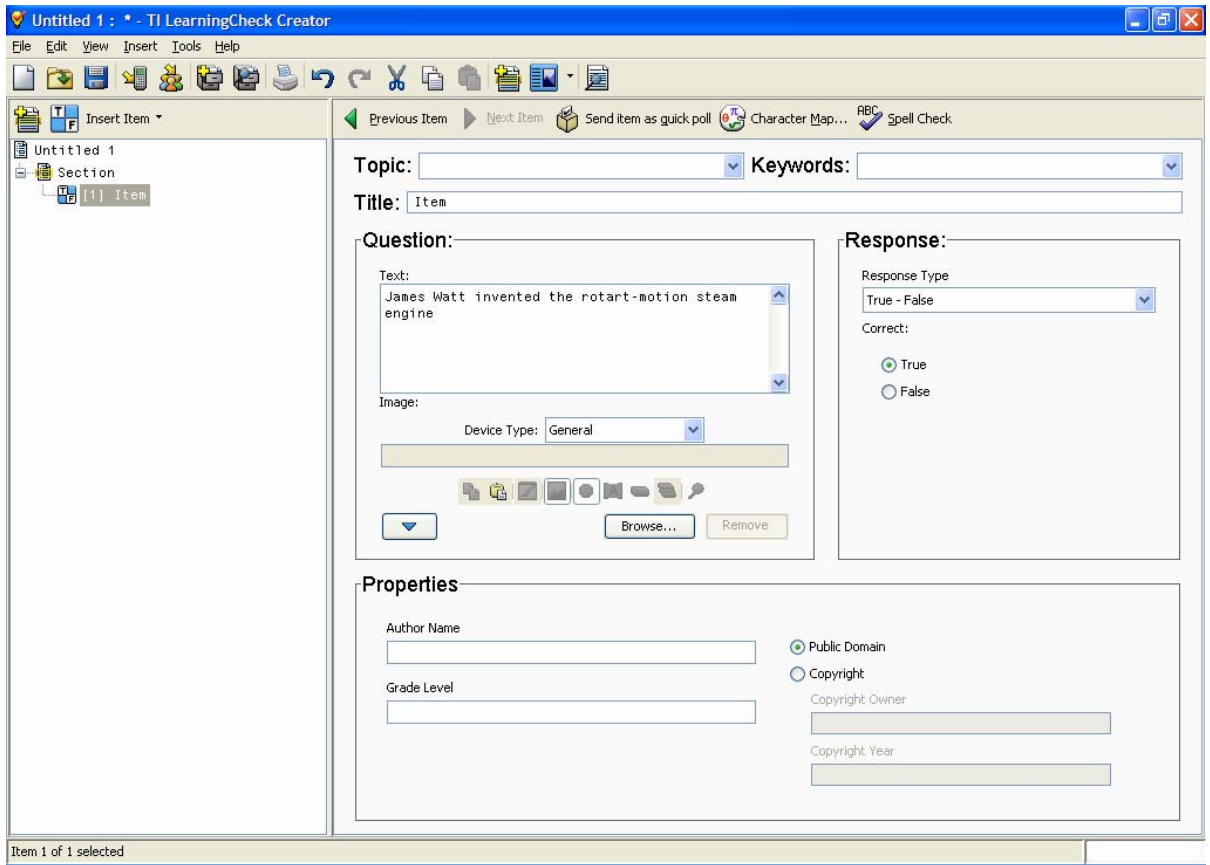
5. Compose an assessment item and send it to the class

A. Insert a Standard Choice item in your LearningCheck document. **Insert Item > Standard Choice**

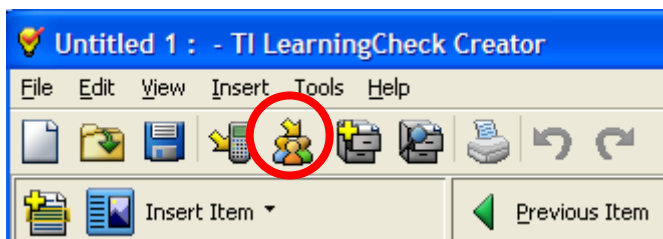


B. Create a sample question.

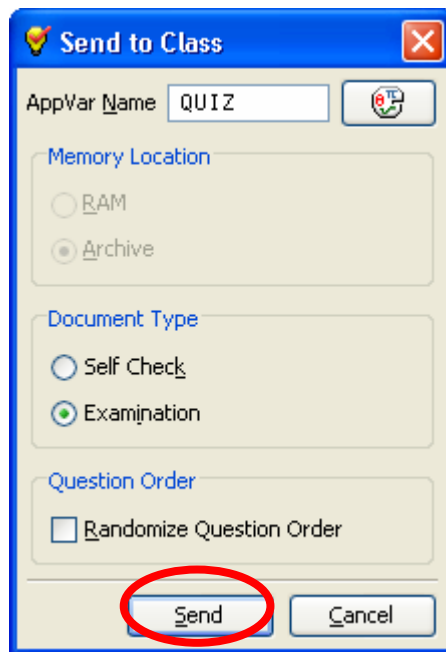
Please see the TI LearningCheck Creator Help for additional information on using this tool.



C. Click the **Send to Class** icon on the Tool Bar.



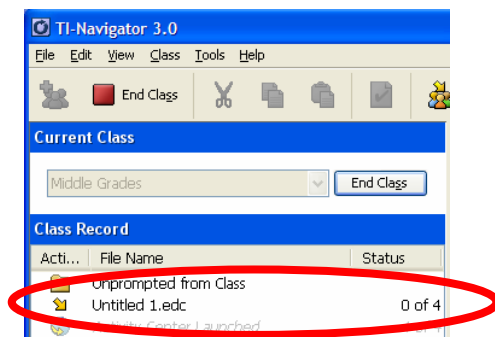
The **Send to Class** dialog box will open.



D. Type an **AppVar Name** and click **Send**.

E. Close TI LearningCheck™ Creator.

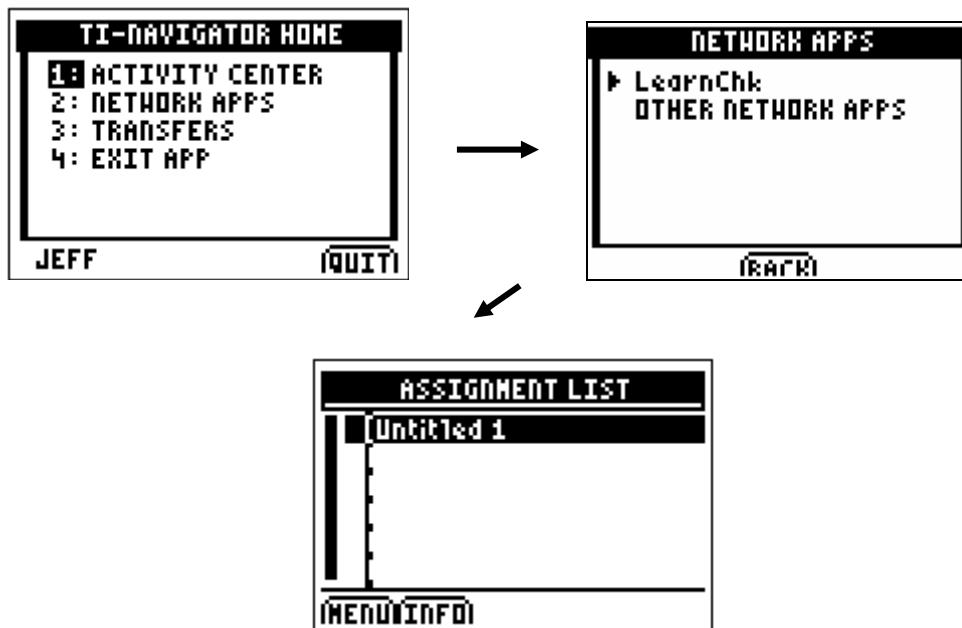
The LearningCheck file containing the item will be added to the TI-Navigator™ **Class Record**.



6. Have students login, enter LearningChk and answer the question

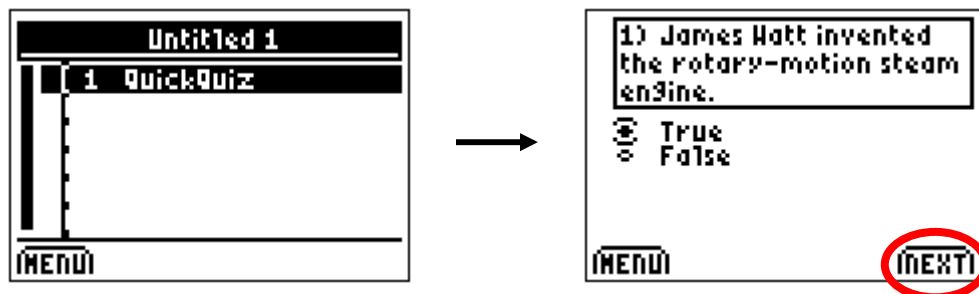
A. Students login and chose **NETWORK APPS** from the **TI-NAVIGATOR HOME** screen.

B. Students choose **LearnChk** and enter the app.

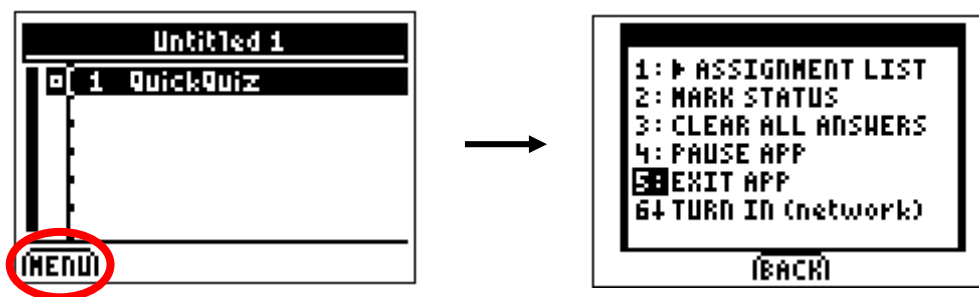


C. Students enter the assignment and answer the question.

Students choose the **Next** softkey to complete the assignment.

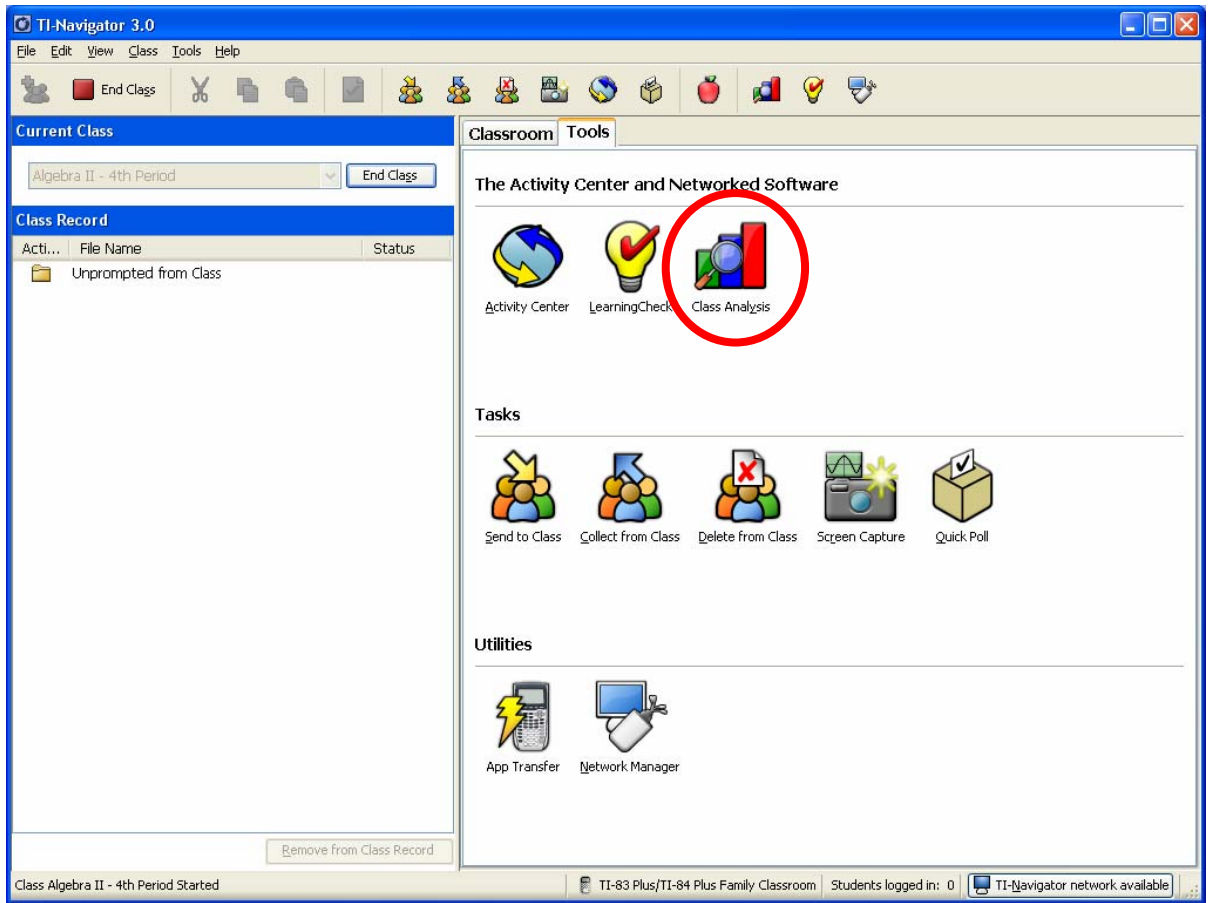


D. Students can now exit the app by choosing the **Menu** softkey then choosing the **EXIT APP** option.

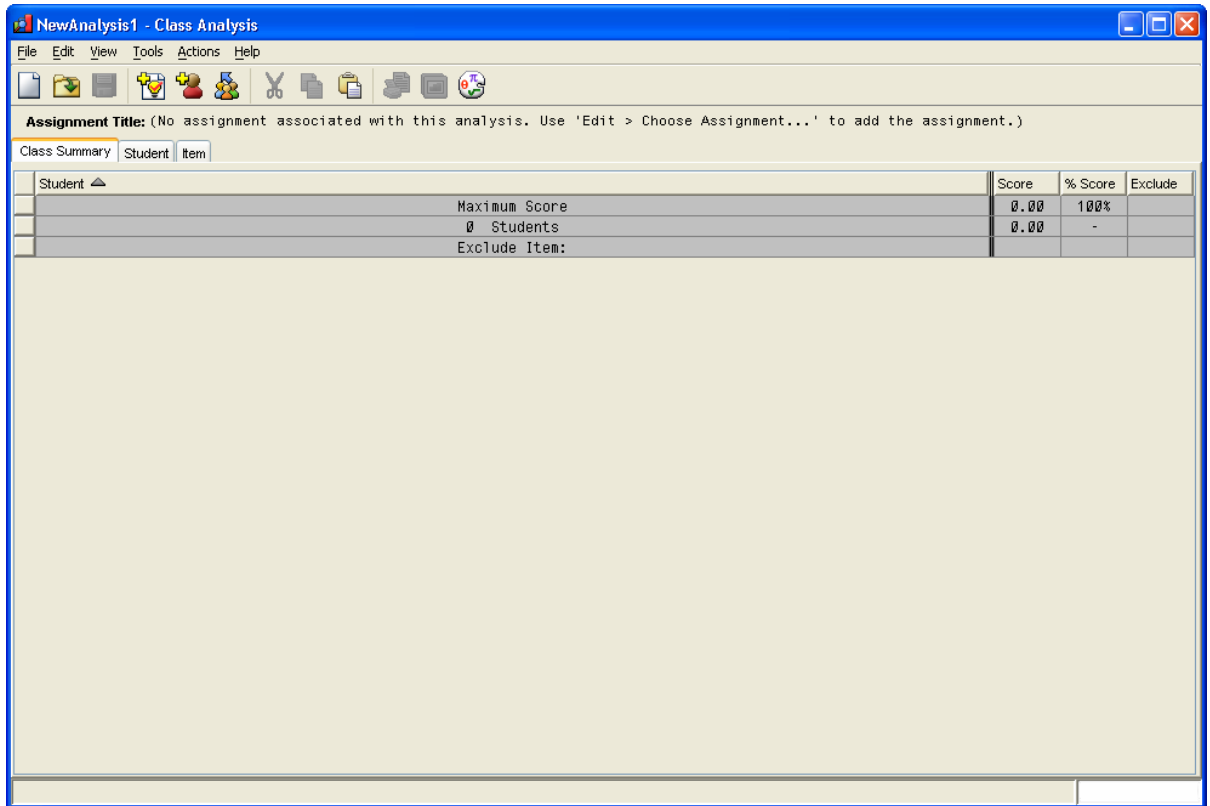


7. Launch the Class Analysis from the Tools Tab and collect the answer file

A. Click the **Class Analysis** icon.

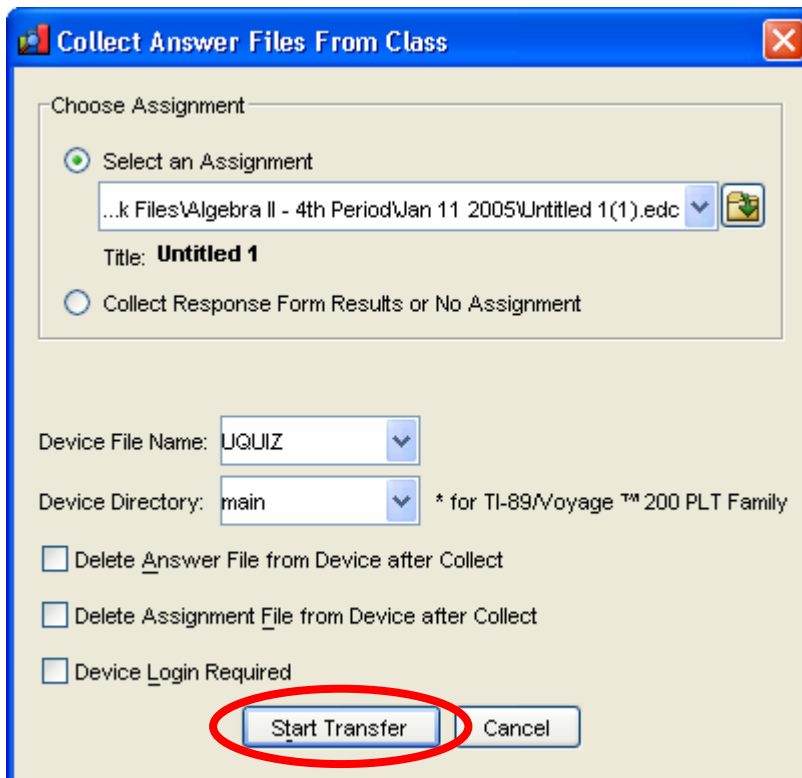


Class Analysis will open.



B. Click the **Collect from Class** icon on Tool Bar.

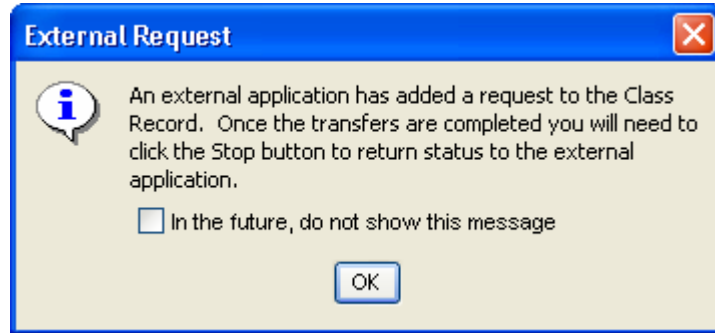
The **Collect Answer Files from Class** dialog box will open.



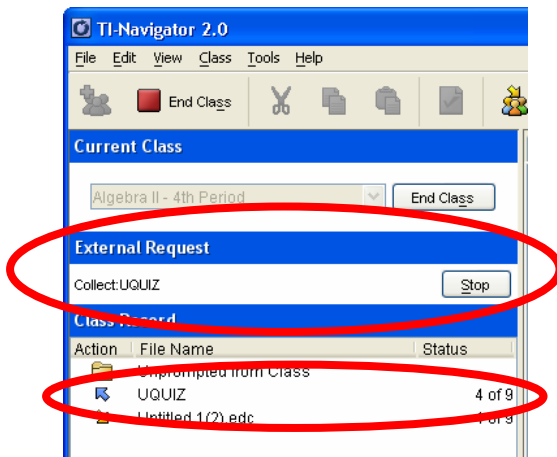
C. Click the Start Transfer button.

The TI-Navigator External Request dialog box will open.

Click **OK**.



The External Request will be displayed in the TI-Navigator home screen and the Collect Action will be displayed in the **Class Record**.



D. When the file has been collected from all of the students who are logged in, click the **Stop** button in **External Request**.

The collected answer file will open in Class Analysis.

Please see the Class Analysis Help for additional information on using this tool.

Student	Item	Score	% Score	Exclude
	Maximum Score	1.00	1.00	100%
JEFF		1.00	1.00	100%
MIKE		1.00	1.00	100%
OURI		0.00	0.00	0%
SUSAN		1.00	1.00	100%
4 Students		0.75	0.75	75%
Exclude Item:		<input type="checkbox"/>		