

# Using Character Map in TI LearningCheck™ Creator

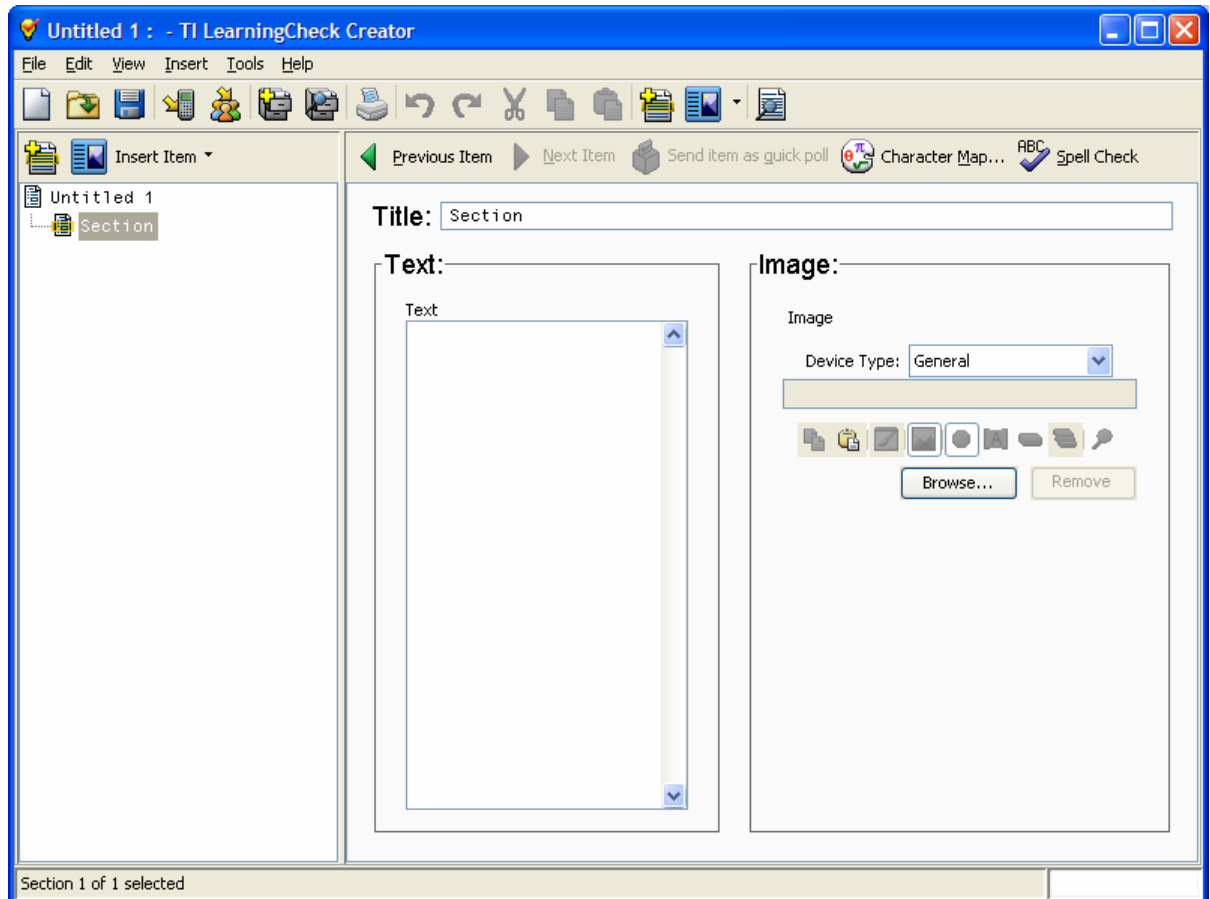
## Overview

This tour details the use of the Character Map in the creation of TI LearningCheck items.

## 1. Launch the LearningCheck Software

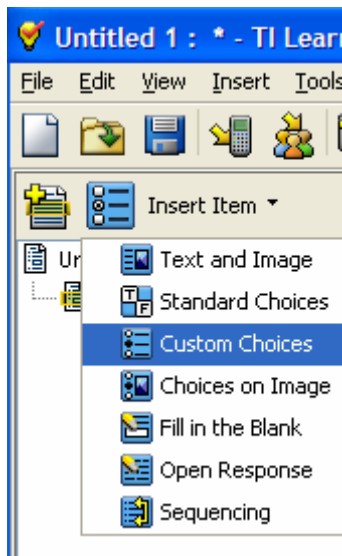
Click **Start > Programs > TI Tools > TI LearningCheck Creator > TI LearningCheck Creator**.

TI-LearningCheck™ Creator opens.

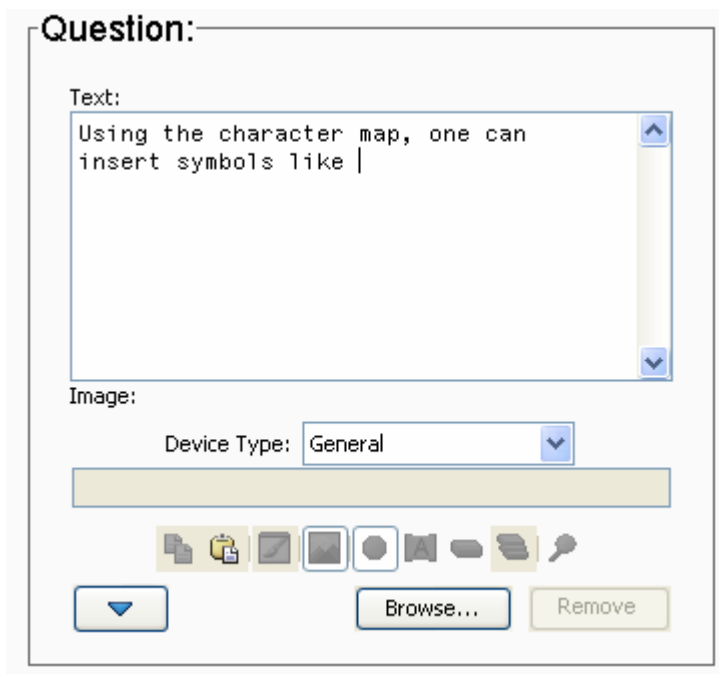


## 5. Compose an assessment item

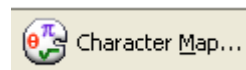
A. Insert a Standard Choice item in your LearningCheck document. **Insert Item > Custom Choice**



B. Create a sample question with the  $\pi$  symbol. In the question section begin typing your question



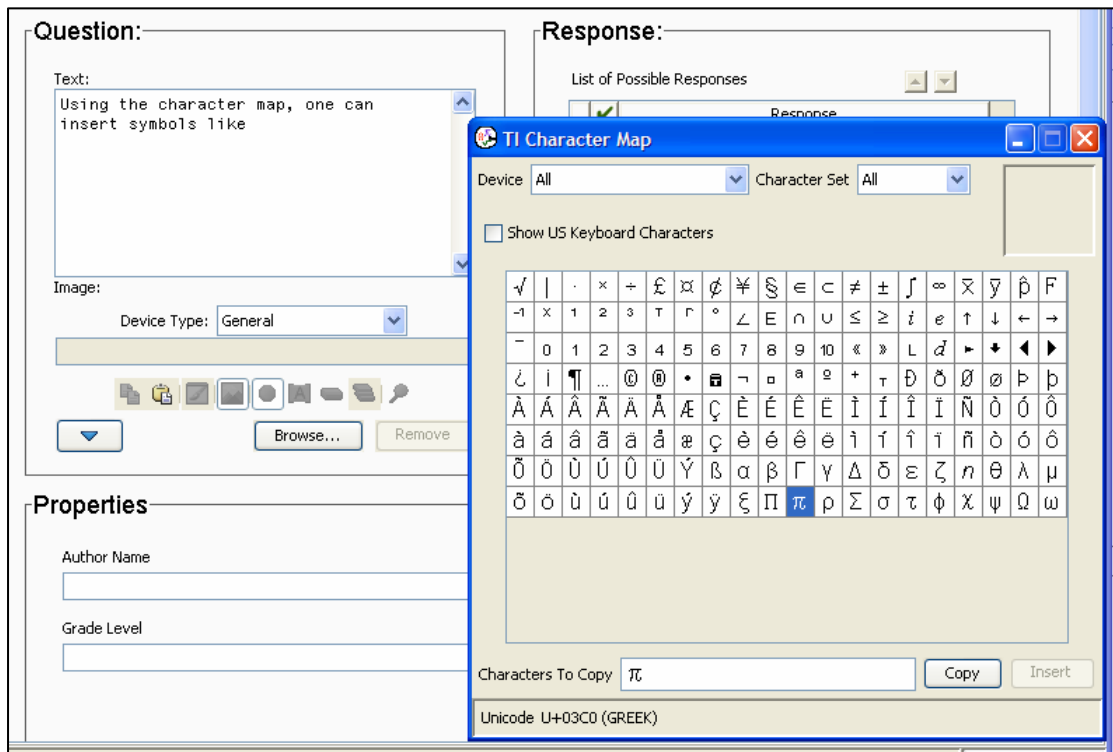
C. Click on the Character Map icon in the Tool bar.



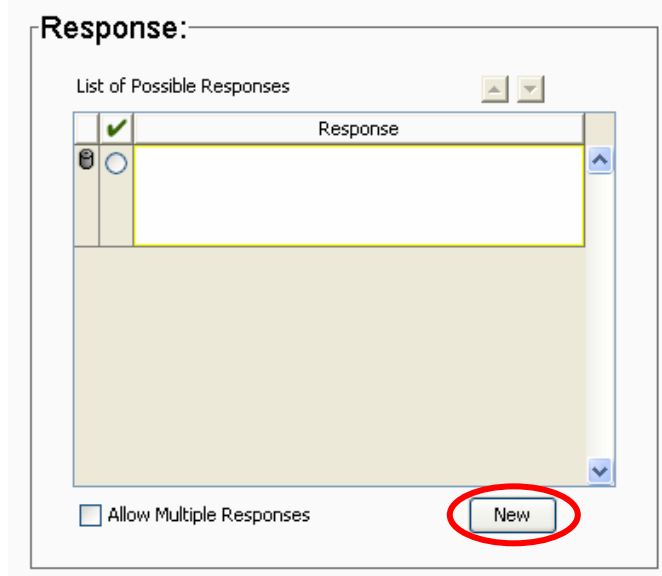
The TI Character Map displays. Select the  $\pi$  symbol

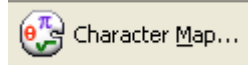
D. Once  $\pi$  is selected there are two options:

- Select **Copy** and then go to the question text and select **Edit > Paste** or use the shortcut Ctrl-v.
- Go back to the text of the problem and place cursor in the location that the symbol should be inserted, go back to the TI Character Map and select **Insert**. **Insert** will only become active if the cursor is actively placed in the specified location.

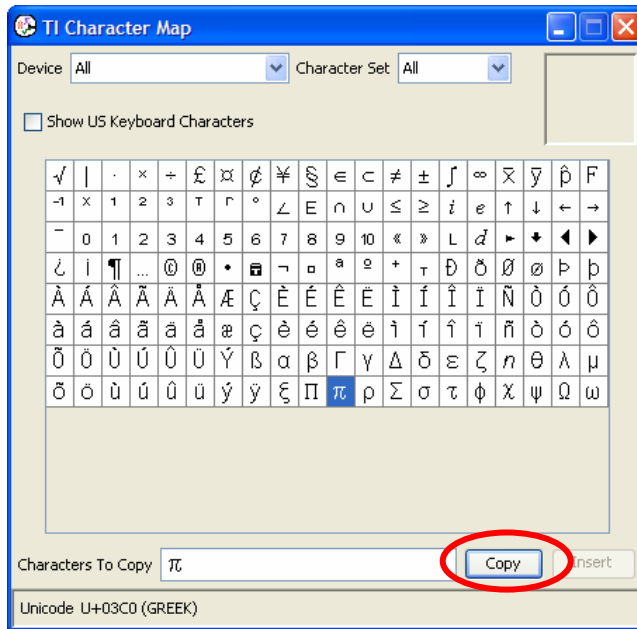


E. Create Response options with  $\pi$  symbol. In the response area, select **New**.

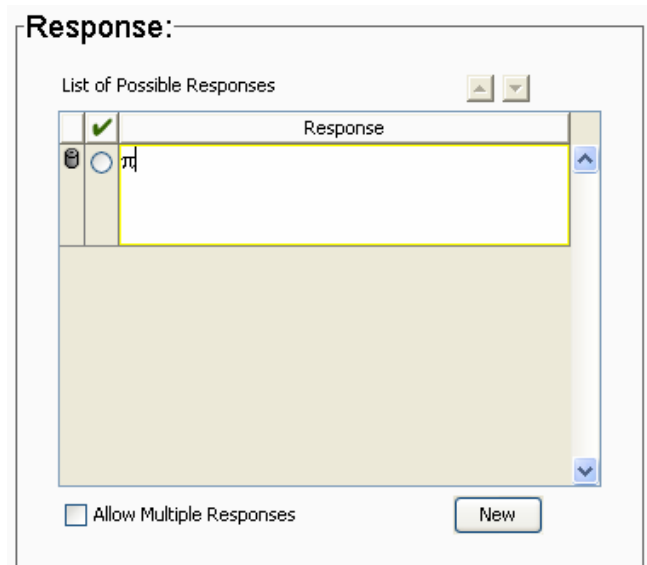




F. Click on the Character Map icon in the tool bar. This will open the TI Character Map. Select the  $\pi$  symbol and then select Copy.



G. Go back to the response area and select Ctrl-v to paste the  $\pi$  symbol. (Note: The **Paste** icon in the toolbar and **Edit**→ **Paste** option and the Insert option is not available in the response area).



**Hint:** Although there are several ways to get characters from the TI Character Map into an item, the one way that works for all text fields is to select **Copy** in the TI Character Map and then paste using the short cut **Ctrl-v**.