

Using Background Images in Activity Center

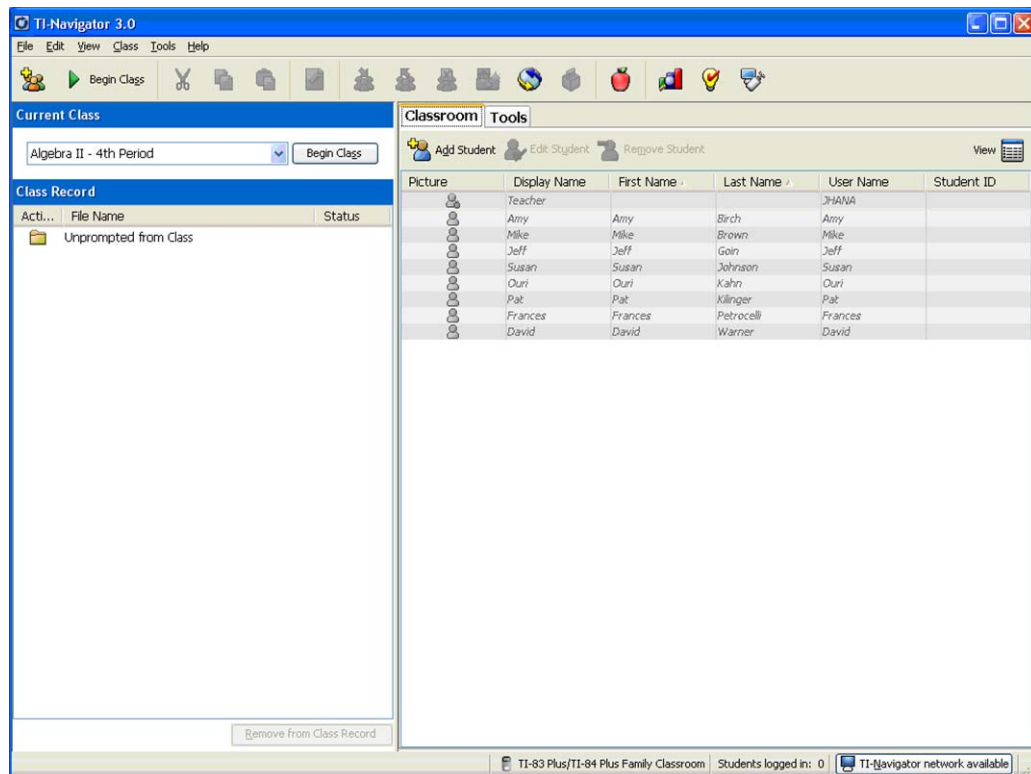
Overview

This tour details the use of Background Images in the Activity Center graph screen.

1. Launch the TI-Navigator™ Software

Click **Start > Programs > TI Tools > TI-Navigator > TI-Navigator**.

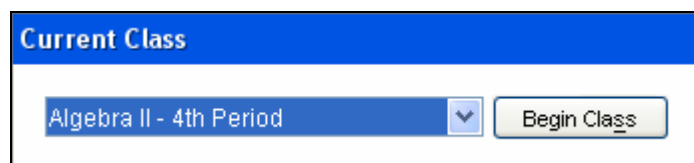
The TI-Navigator computer home screen opens.



2. Start a Class

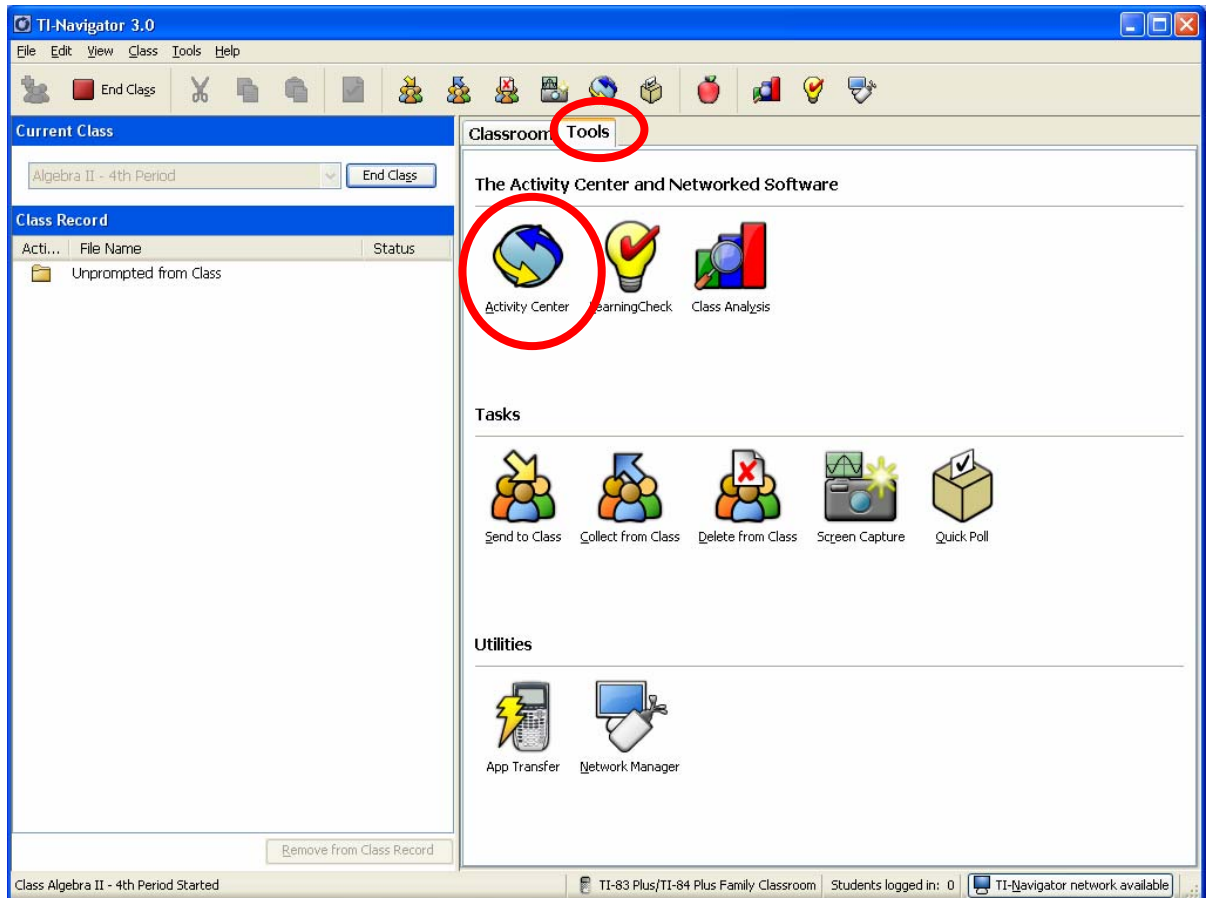
Assure that your TI-Navigator network hardware is connected and powered and calculators containing the necessary apps are connected.

Choose a Class to begin in the **Current Class** selector and click **Begin Class**.



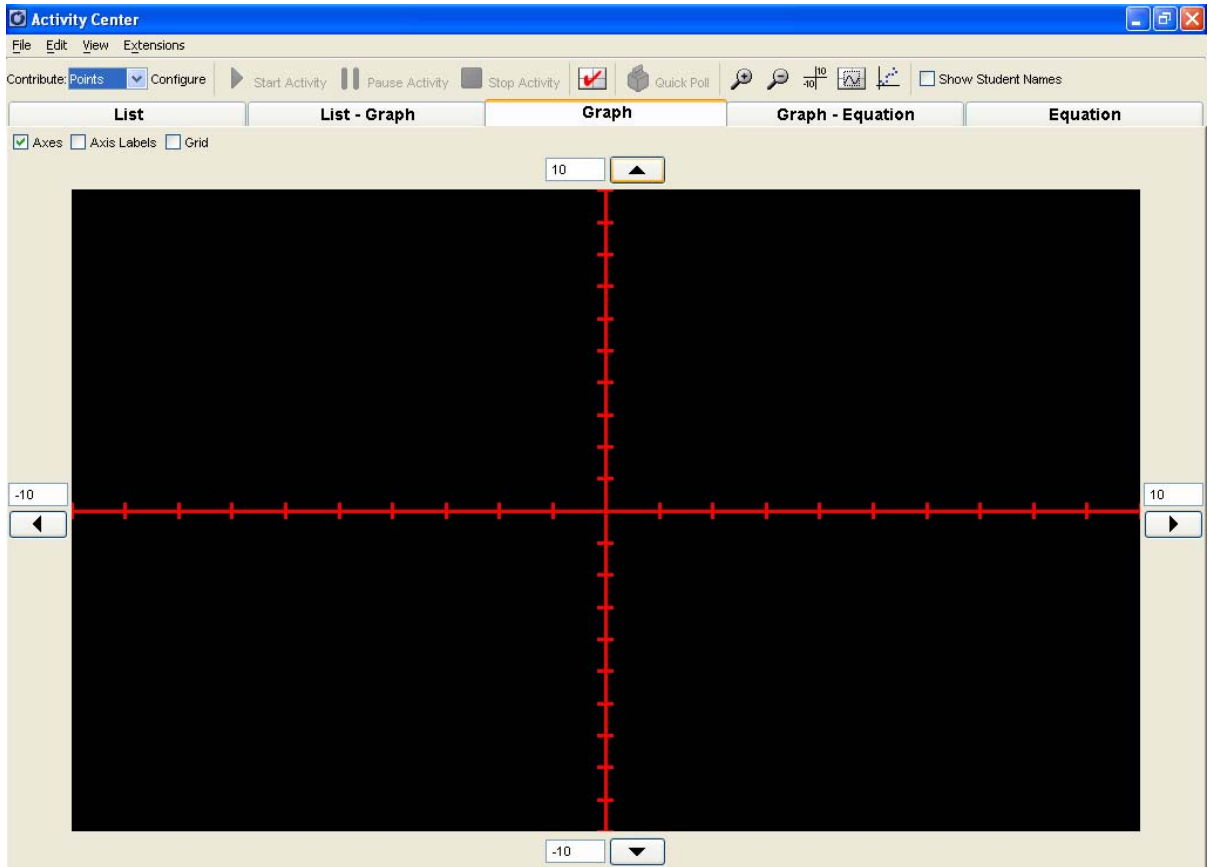
3. Launch the Activity Center

A. Click the **Tools** tab near the upper middle of the home screen.



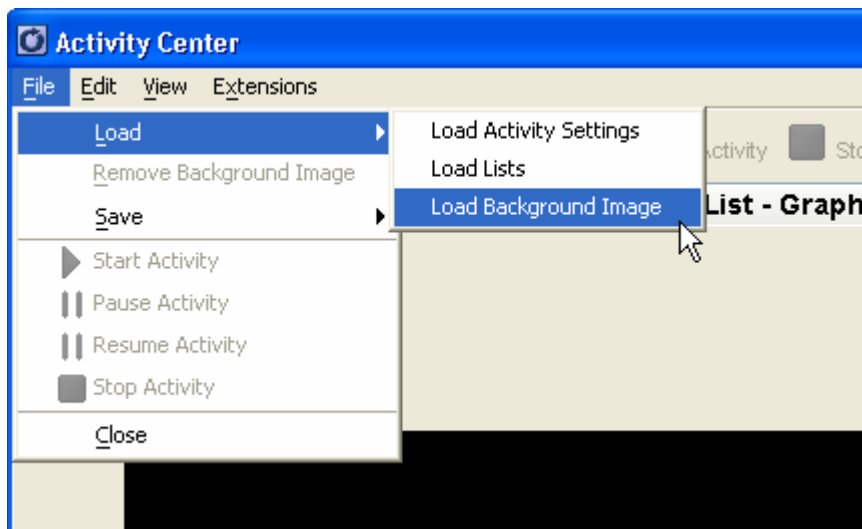
B. Click the **Activity Center** icon.

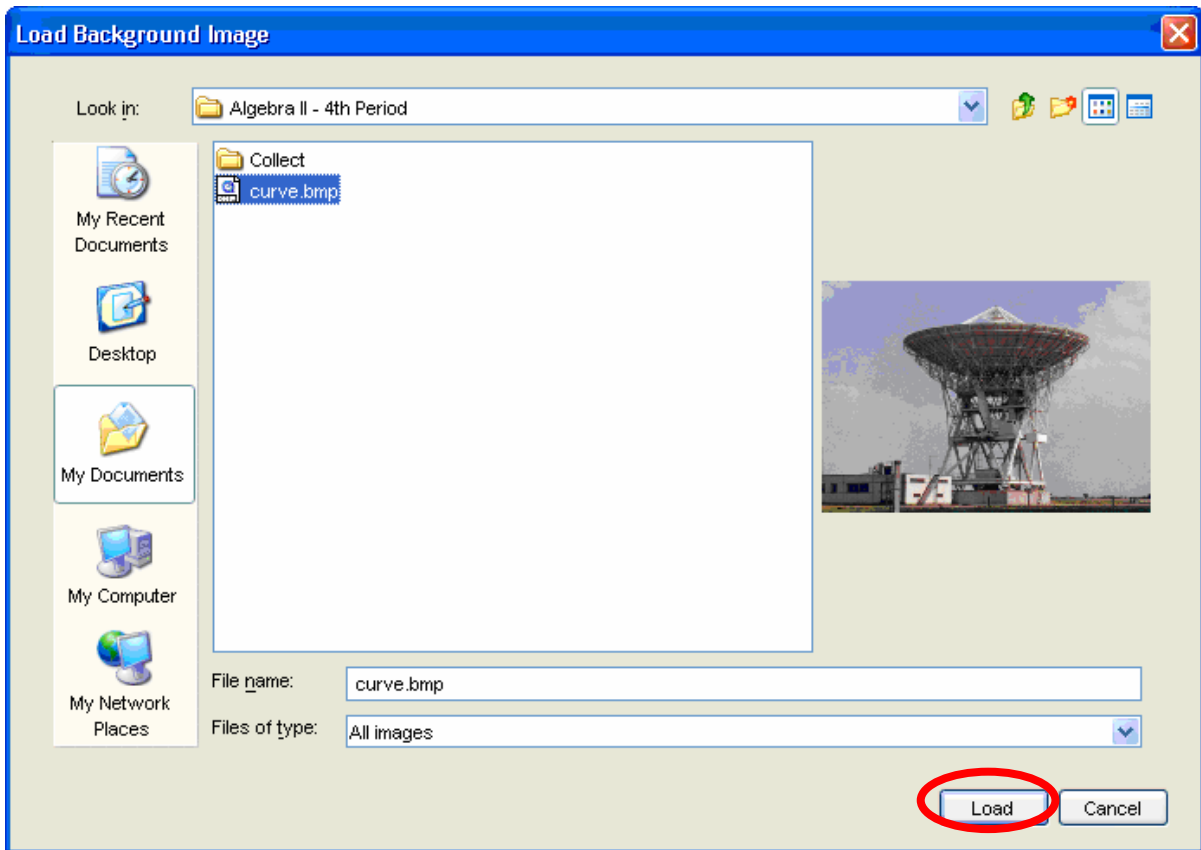
The Activity Center opens.



4. Load a Background Image

A. Click File > Load > Load Background Image.

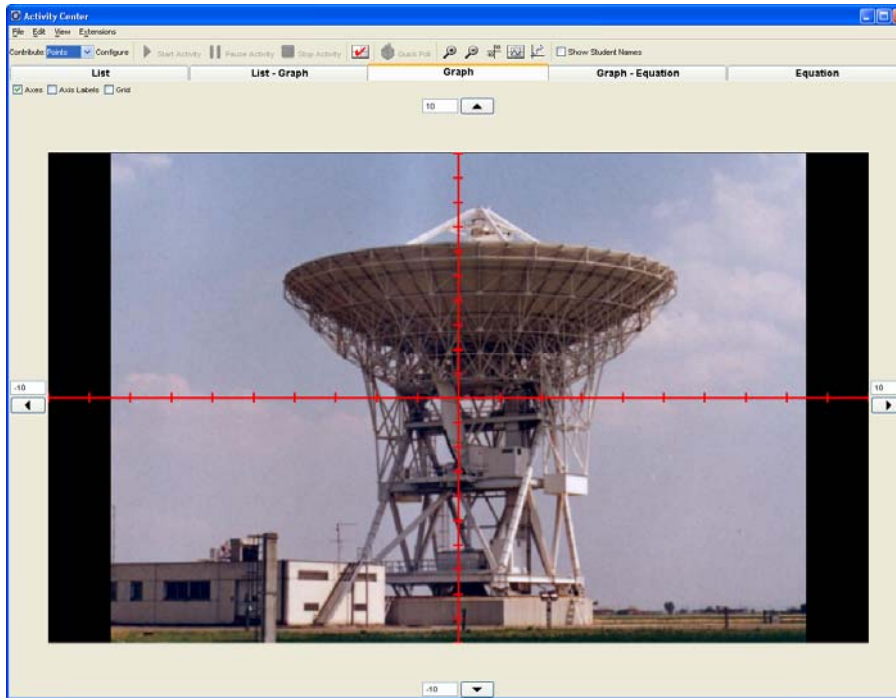


B. Browse to an image file, select it and click **Load**.

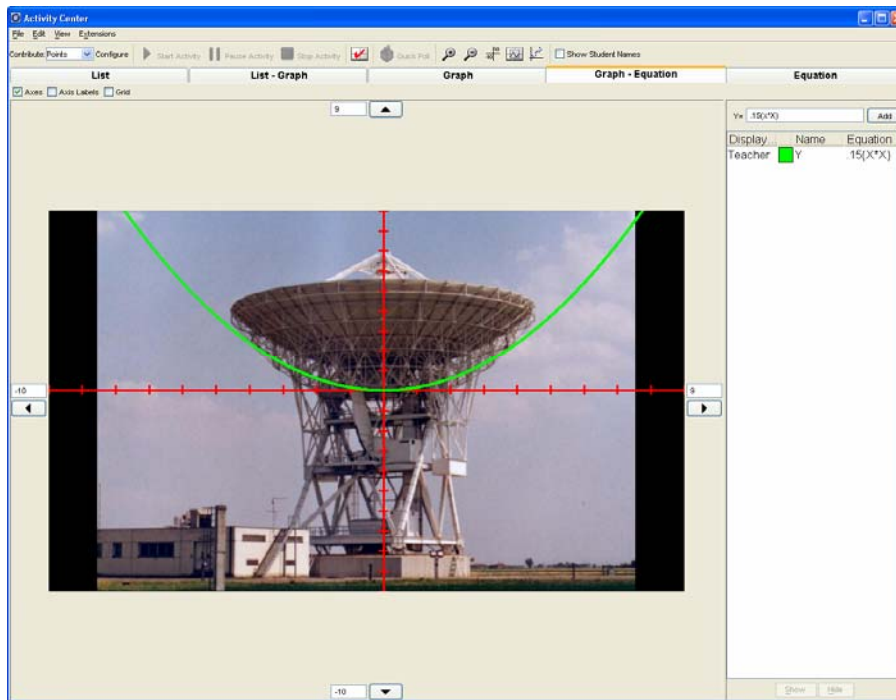
Note: Images may be in GIF, PNG, BMP, JPEG, .83i or .8xi format. Only .83i or .8x1 files will be sent to student calculators when the **Send current graph contents as background** option is specified in the **Contribute Equations** or **Contribute Points** activities.

When loading .83i or .8xi images, about 9 rows of pixels will be cropped off of the bottom of the images to accommodate the navigation soft keys when viewed on the calculator.

C. The image will appear as a background for the graph display.



D. The image can now form the basis of an activity...



E. To remove the background image, click **File > Remove Background Image**.