

Starting a Class Session

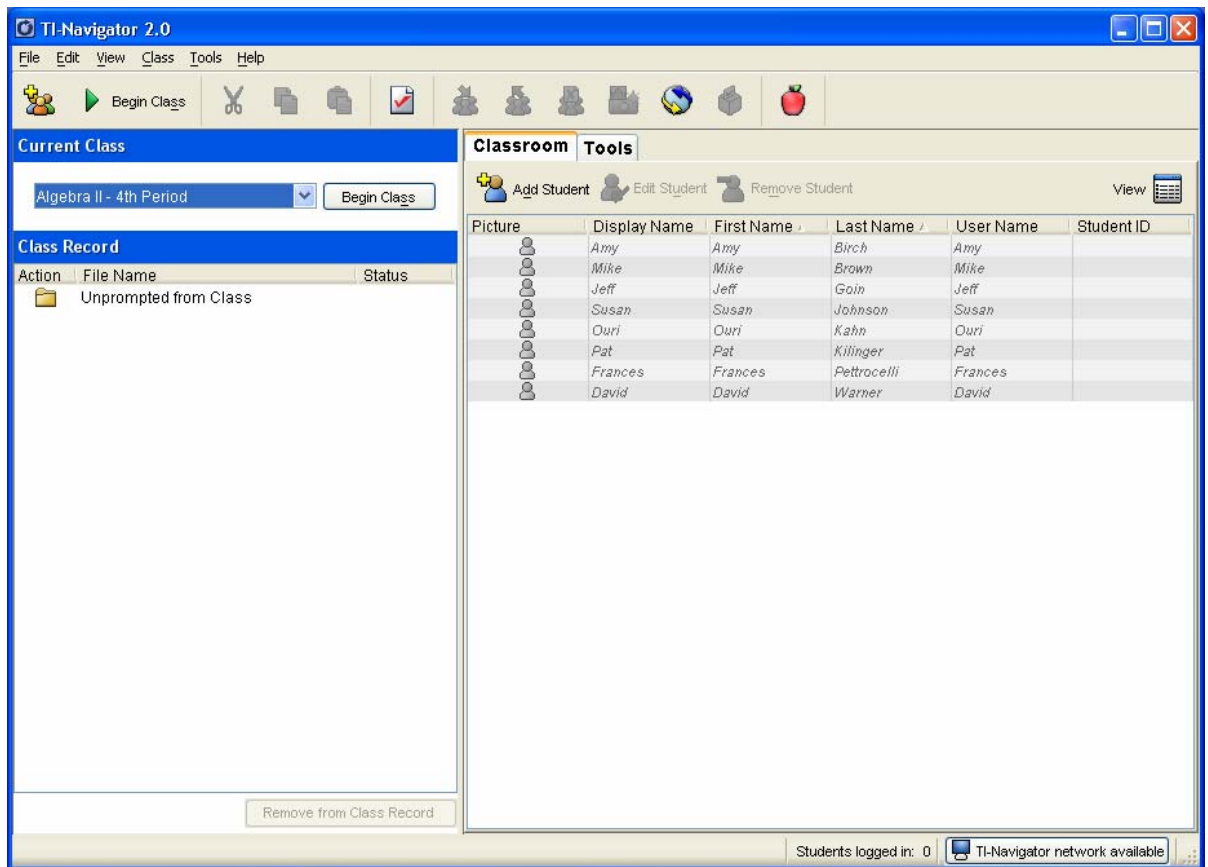
Overview

This tour details starting a class and viewing student login in real-time.

1. Launch the TI-Navigator™ Software

Click **Start > Programs > TI Tools > TI-Navigator > TI-Navigator**.

The TI-Navigator computer home screen opens.



2. Start a Class

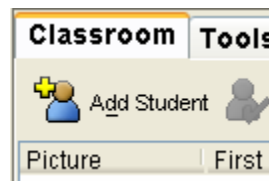
Assure that your TI-Navigator network hardware is connected and powered and calculators containing the necessary apps are connected.

Choose a Class to begin in the **Current Class** selector and click **Begin Class**.

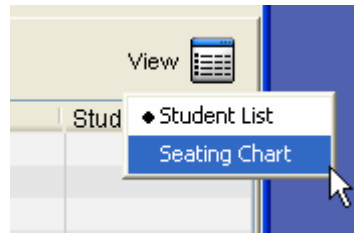


3. View the Students as they login

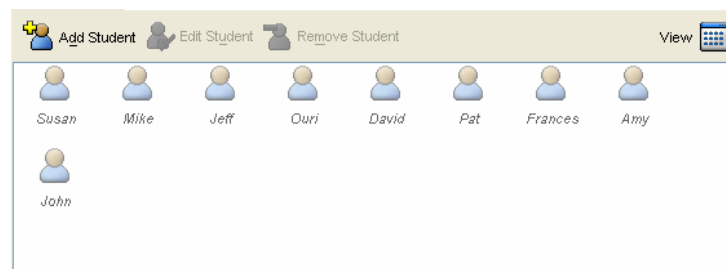
If it is not already selected, click the **Classroom Tab**.



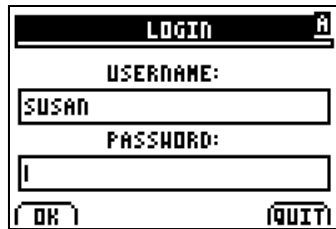
If it is not already selected, choose **Seating Chart** in the **Classroom View** selector.



A Seating Chart view of your class will open.



As students complete the login process...



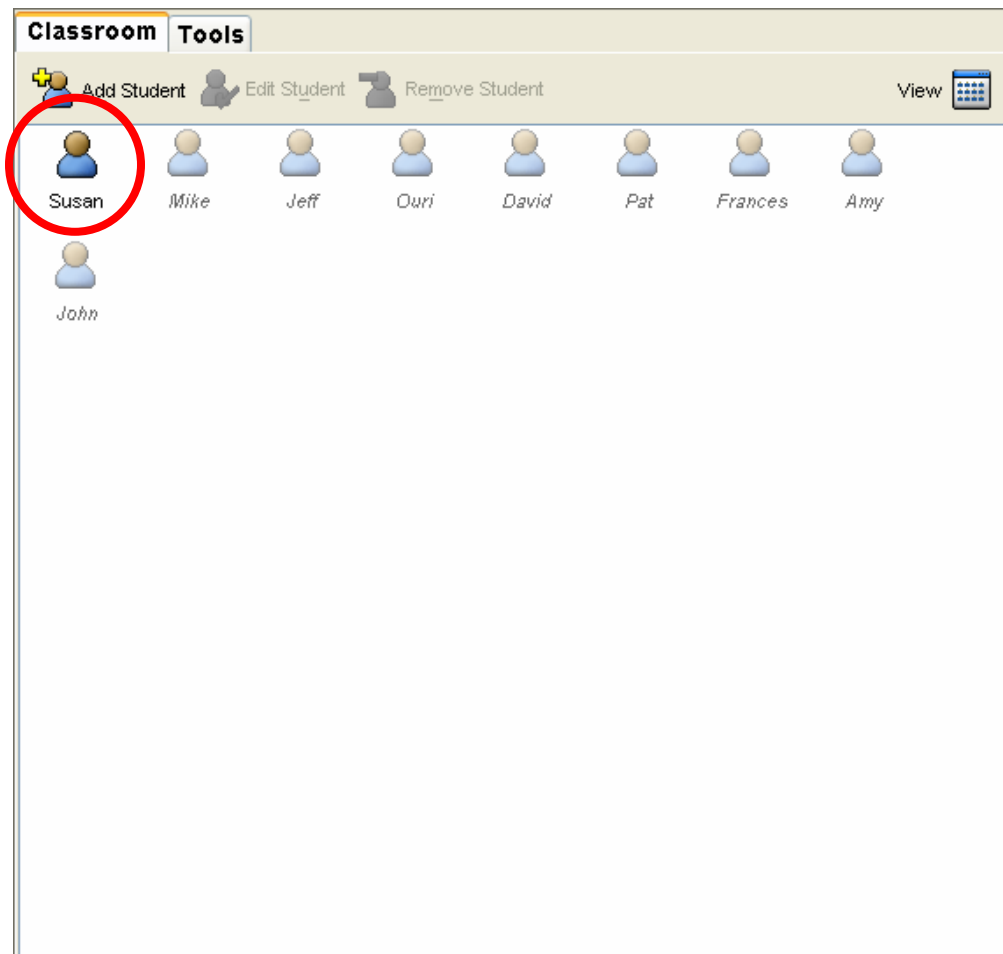
LOGIN

USERNAME:
SUSAN

PASSWORD:
|

OK QUIT

Their corresponding icons in the Seating Chart will become active.



Classroom Tools

Add Student Edit Student Remove Student View

Susan Mike Jeff Ori David Pat Frances Amy

John