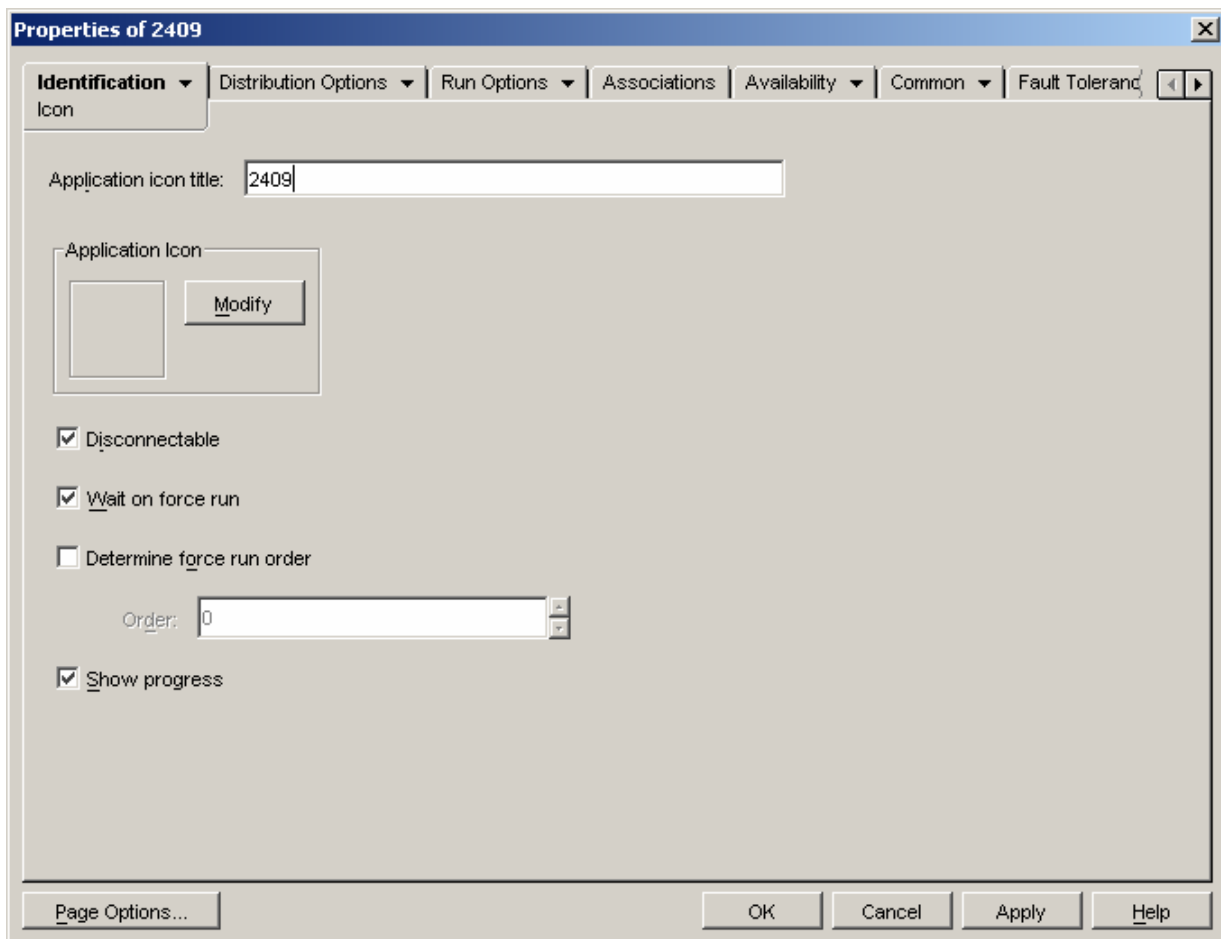


# Creating a Package to Install TI-Nspire™ computer software using ZENworks OnDemand Services®

This document provides a high-level overview of creating a package to install TI-Nspire™ software over a network using Zenworks OnDemand Services®. The following example is intended for demonstration purposes only. Please refer to your original product documentation or the network admin support site for more complete and updated information and examples.

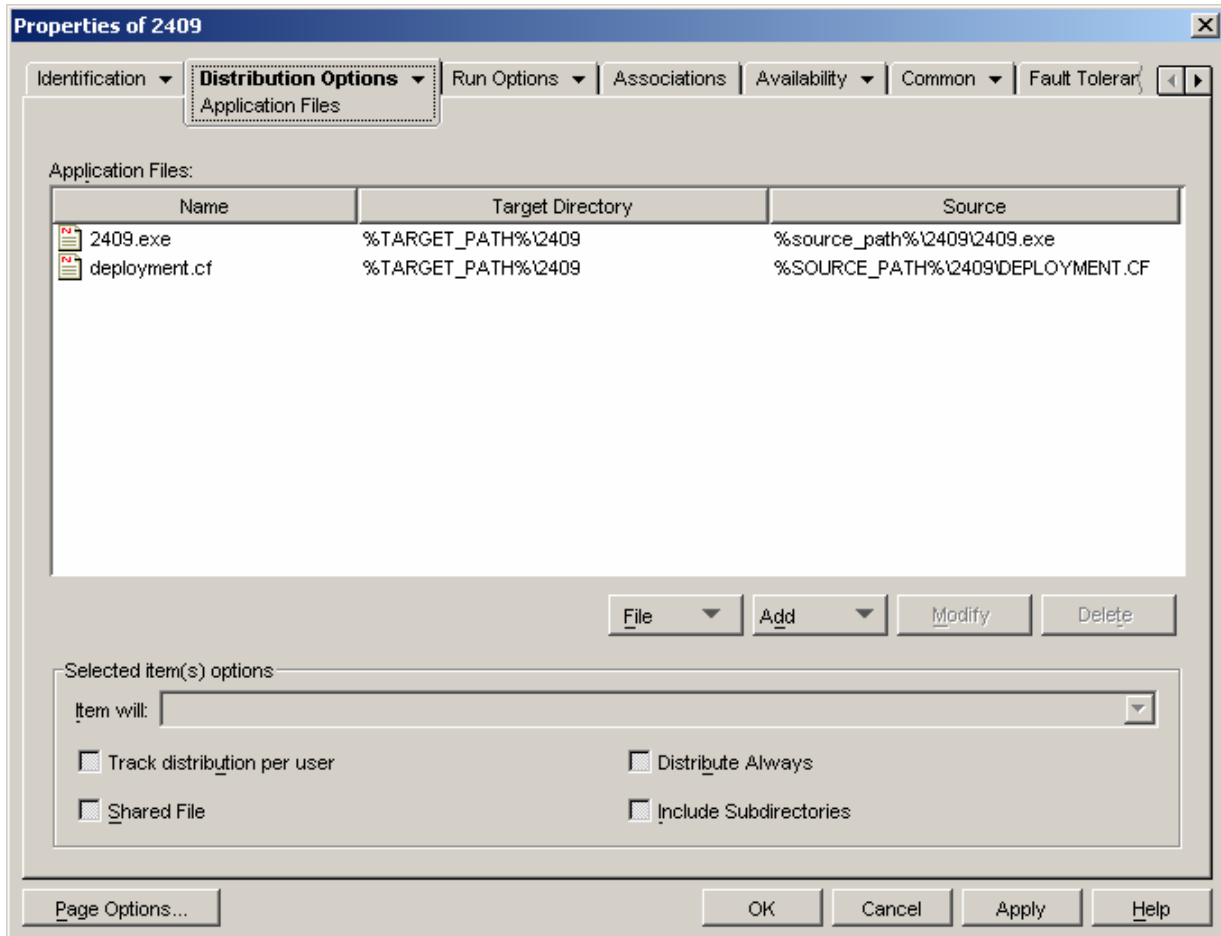
## Identification Settings

The following example illustrates an application installation that runs an executable called **2409**.

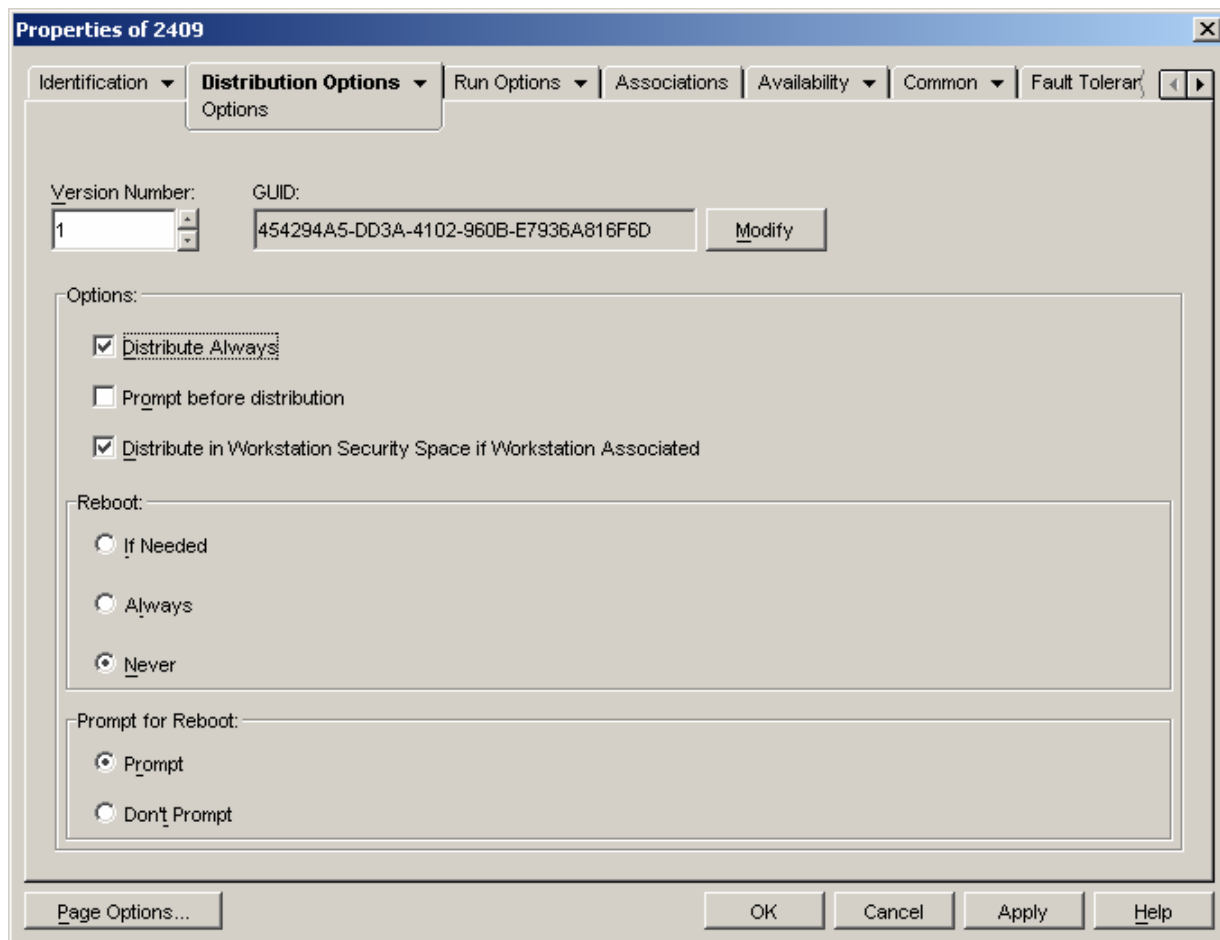


## Distribution Options

For this example, **2409.exe** and **deployment.cf** are the two files that will be published to the Novell® Desktop Management Client. (The license file is included in a later step.)

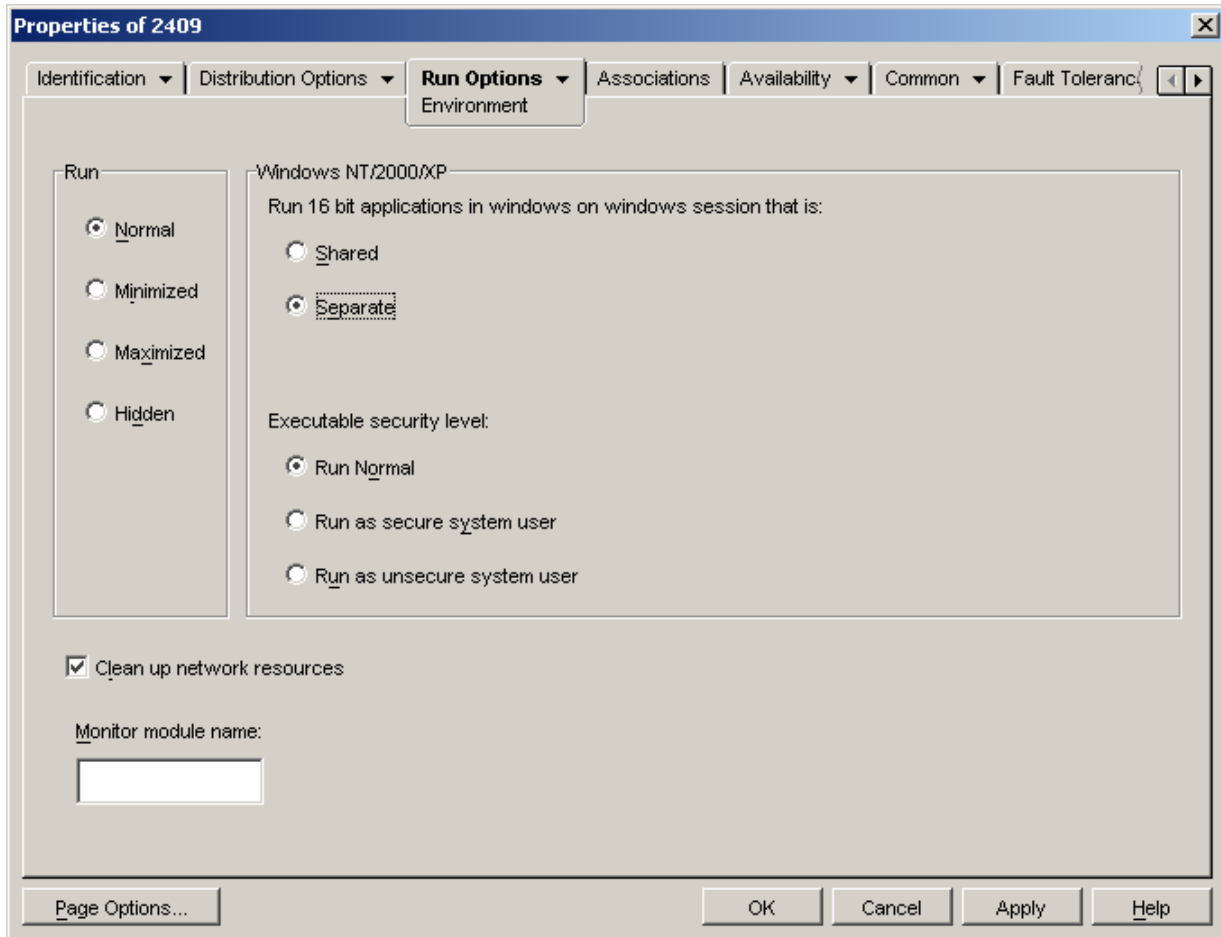


Version information (if applicable) along with sample distribution and Reboot instructions. (TI-Nspire™ computer software should not require a reboot for the installation to complete.



## Run Options

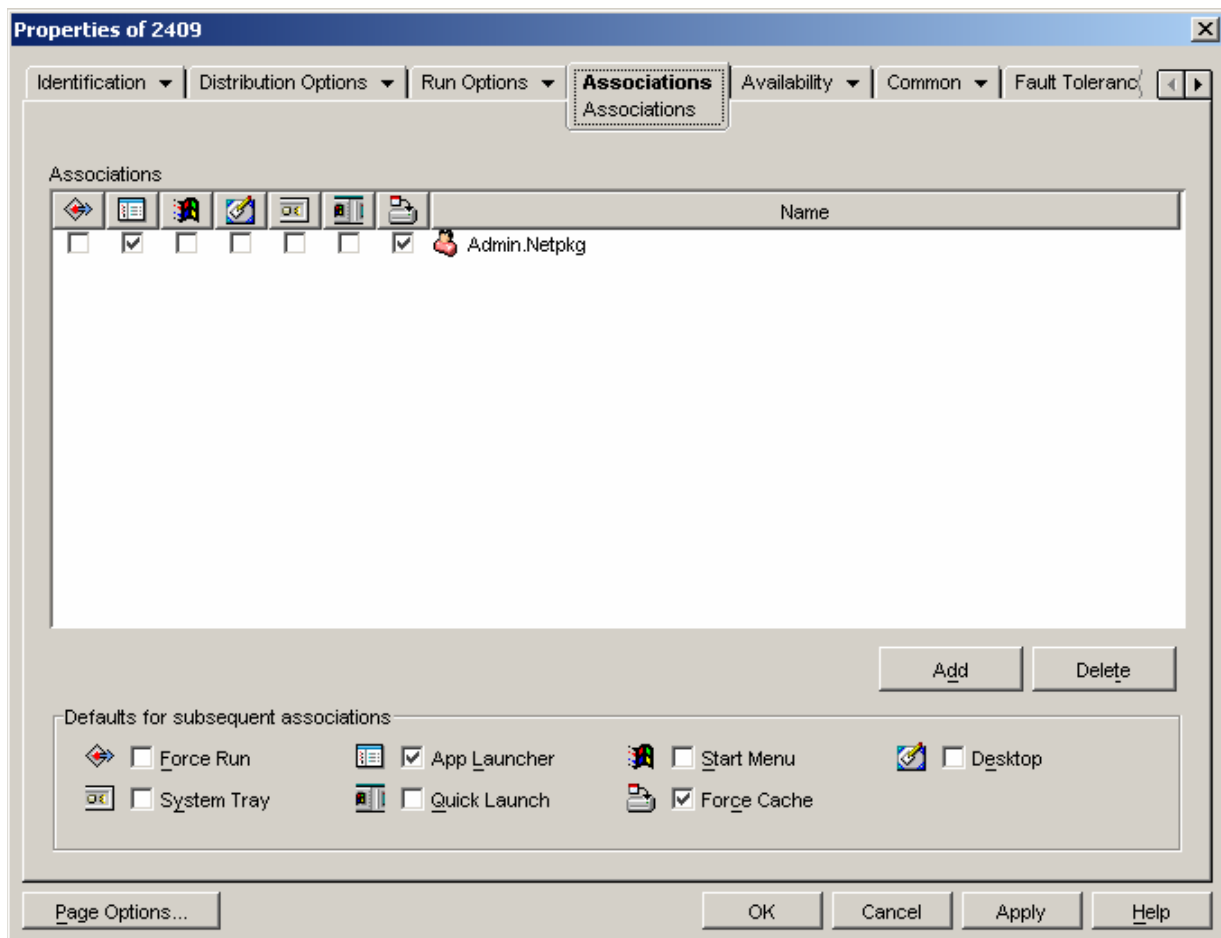
You can specify the Executable security level for the software package to use, and also choose whether the install runs interactively or behind the scenes.



## Associations

In this example, the package will be advertised to an Administrative account and the install icon be available in the App Launcher. By ensuring that this package only appears when the administrator is logged in, we ensure controlled installations under a high-security account.

As a best practice, machine OU's or individual machine names should be chosen in this field. This practice also allows for pre-caching the software and the Force Run (Mandatory) option. Placement of the Icon is up to the individual preference of the network administrator.



## Common Settings

These settings allow the Desktop Management and Installation processes to find the source code for the install. The Source\_path in this case also points to the location of the **License.sc** file needed for successful activation. It also allows for a setup of a working directory in the target\_path environment variable. (please see Product documentation for complete listing of available environment variable setups)

