

Contributing Visual Fractions in Activity Center

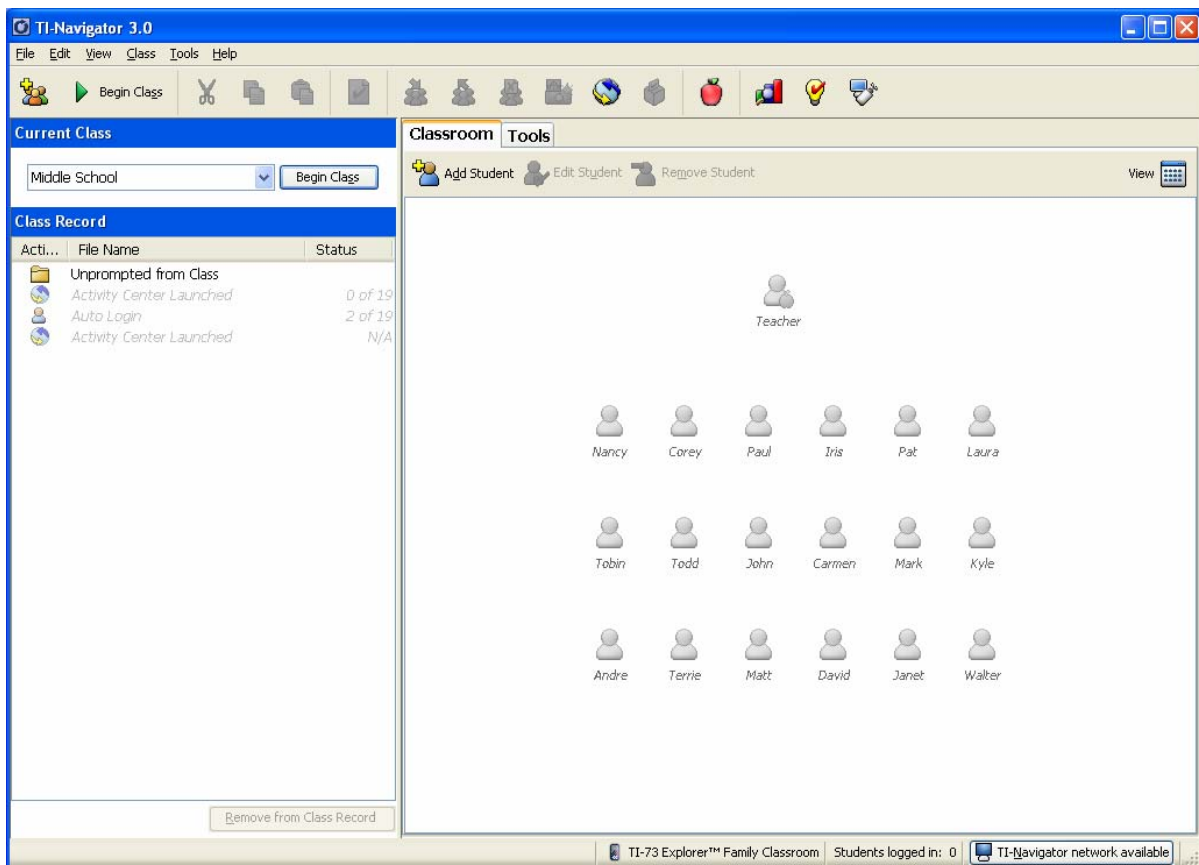
Overview

This tour details the use of the Visual Fractions in the Activity Center. This functionality is useful when you want to conduct lessons involving percents, decimals and fractions where the students input is a visual response. This Activity only works with a TI-73 Explorer Family Classroom.

1. Launch the TI-Navigator™ Software

Click **Start > Programs > TI Tools > TI-Navigator > TI-Navigator**.

The TI-Navigator computer home screen opens.



2. Start a Class

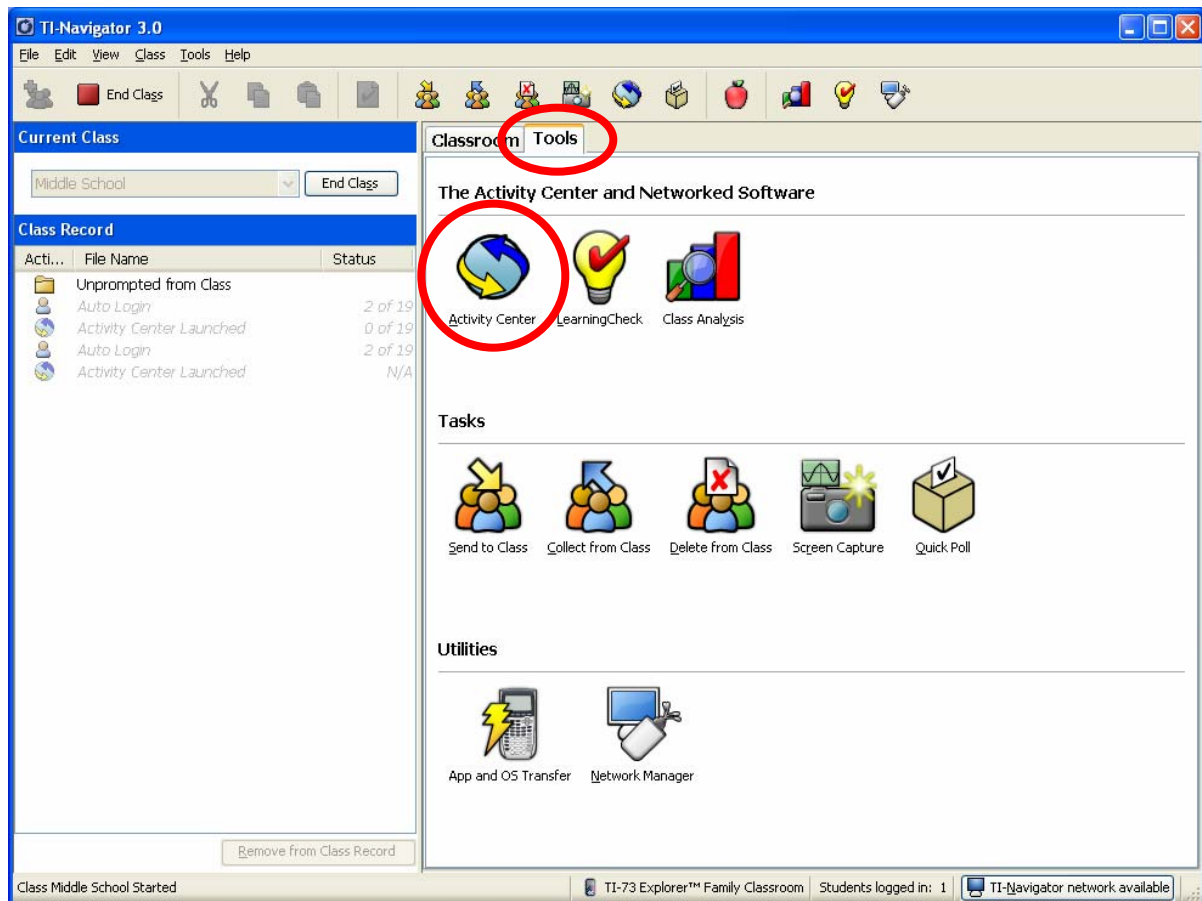
Assure that your TI-Navigator™ network hardware is connected and powered and calculators containing the necessary apps are connected. Choose a Class to begin in the **Current Class** selector and click **Begin Class**.



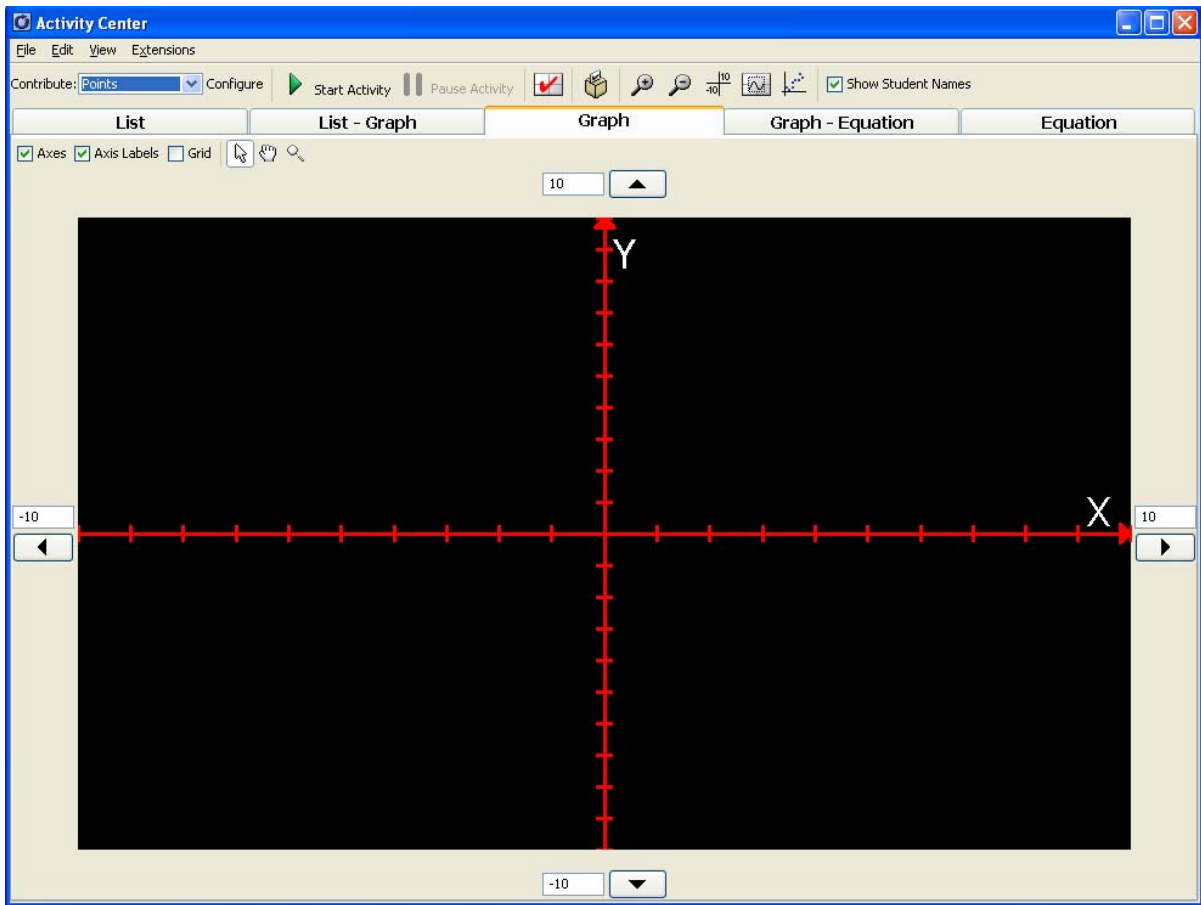
3. Open the Tools Tab and launch the Activity Center

A. Click the **Tools** tab near the upper middle of the home screen.

B. Click the **Activity Center** icon.

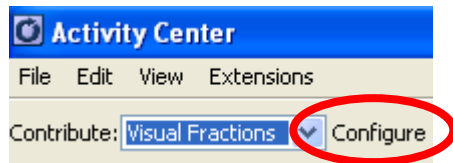


The **Activity Center** opens.



4. Configure the activity

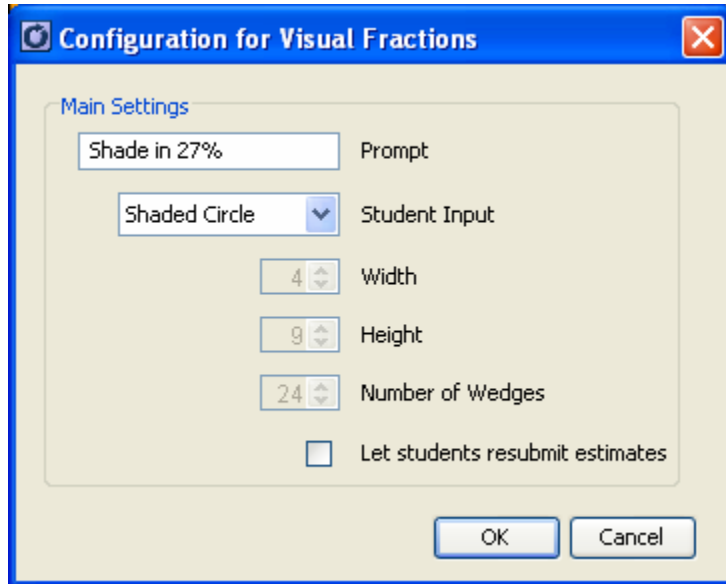
Select Contribute **Visual Fractions** in Activity Center and click **Configure**.



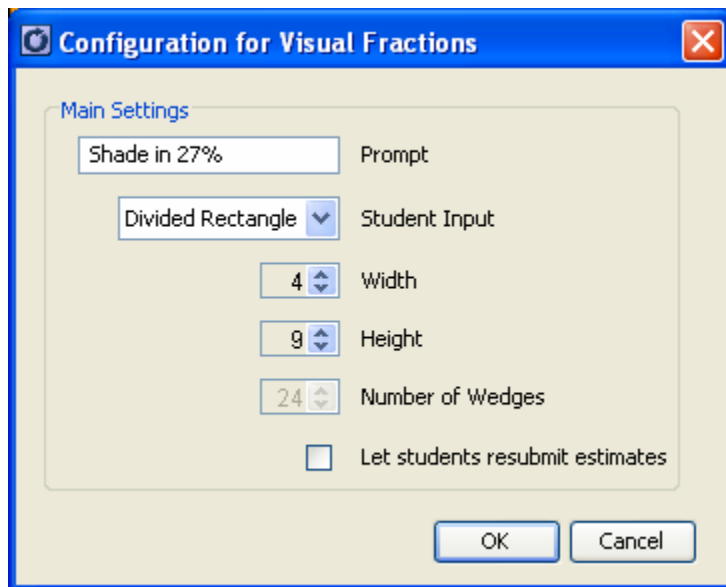
- A. Shaded shapes prompt the student to shade in the shape, usually from bottom to top as if the student were filling a glass. The only exception is the Shaded Circle where the student will fill in the circle in a clockwise fashion starting at the 12 O'clock position.

You can specify a prompt that the student sees on the calculator.

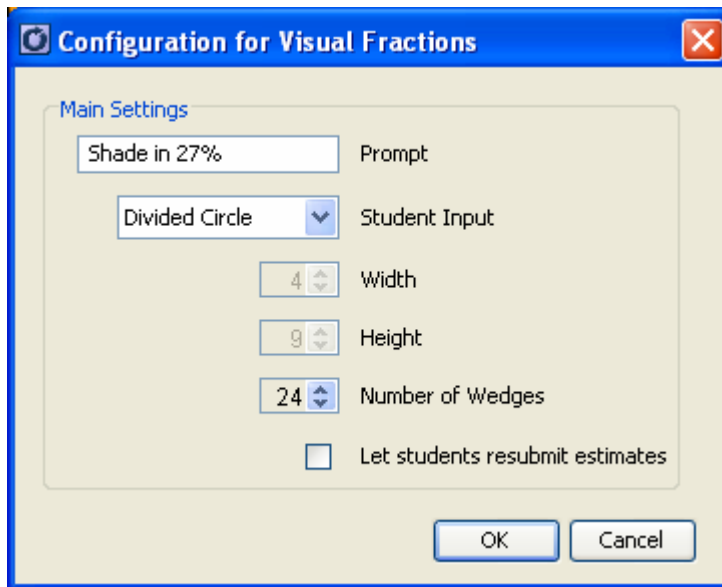
You can specify whether or not you allow students to change their answer after it is submitted.



- B. The Divided Rectangle allows you to specify the number of divisions by defining the height and width for the rectangles. The width can be any number of squares from 1-23 and the height can be any number of squares of 1-12.



- C. The Divided Circle allows you to specify the number of divisions by defining the number of wedges. The possible number of wedges range from 2-24.



This example uses the option B. The divided rectangle

5. Start the Activity

Click on Start Activity and make sure students enter the Activity Center.



6. Have students login, enter the Activity Center and contribute data.

- A. Students login and chose **ACTIVITY CENTER** from the **TI-NAVIGATOR HOME** screen.

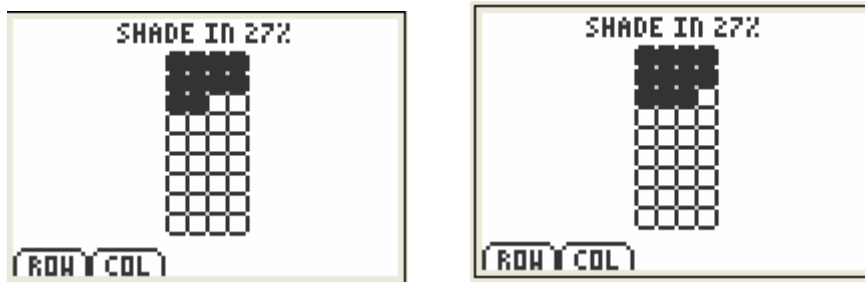


Note: If you have not started the Activity, students will see the following screen.



The **Activity Center** will open.

- B. The student will be able to shade the figure. Use the up and down keys, ENTER key and soft keys to shade. Then press the SEND soft key to submit.



- C. Student data will appear on the teacher computer.

If you want the table analysis to be different than the number line, right click on the table header and choose a different form.

You can change the labels on the number line and table to analyze the responses in one of the three forms: percentage, fraction or decimal.

Student	Response
<Hidden>	.31
<Hidden>	.28
<Hidden>	.28
<Hidden>	.28