

# Contributing Points in Activity Center

## Overview

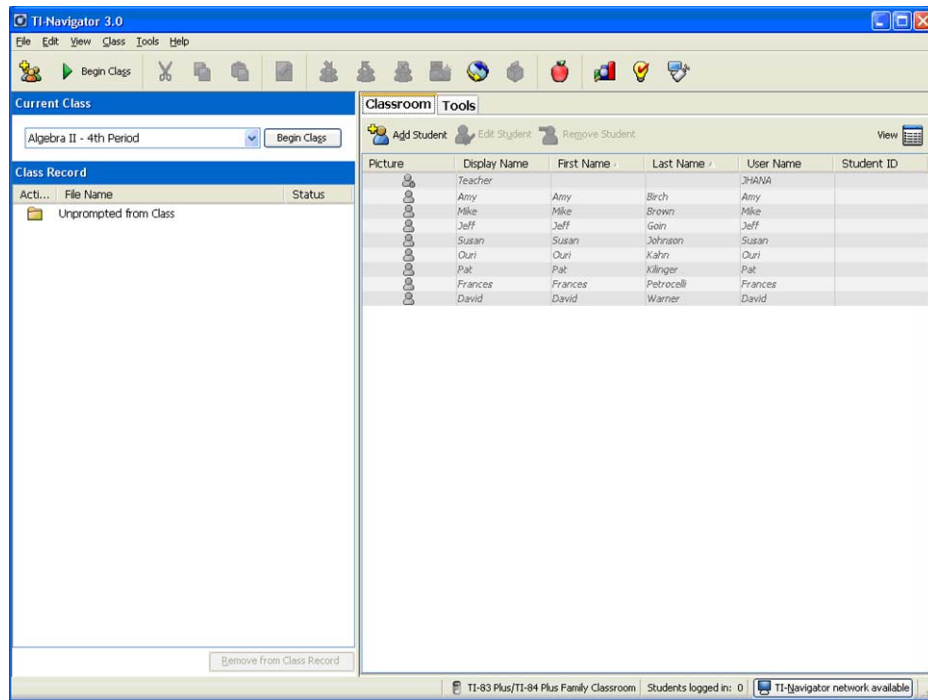
This tour details the use of Points in Activity Center and covers the following areas

1. Selecting Contributing Points for Student Input
2. Configuration Options for Contributing Points
3. Starting Activity
4. Changing Appearance of Student Cursors

## 1. Launch the TI-Navigator™ Software

Click **Start > Programs > TI Tools > TI-Navigator > TI-Navigator**.

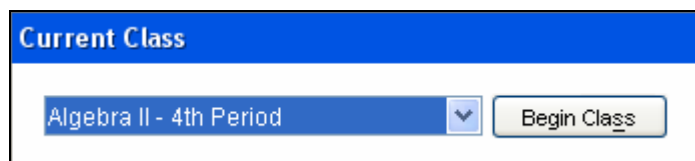
The TI-Navigator computer home screen opens.



## 2. Start a Class

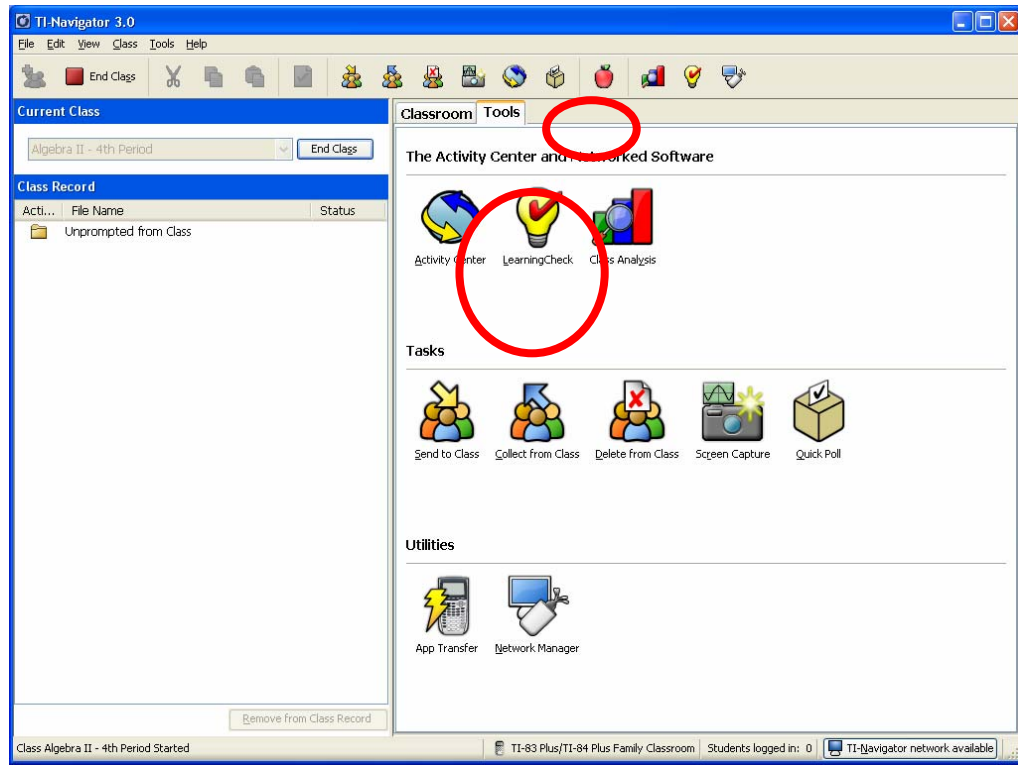
Assure that your TI-Navigator network hardware is connected and powered and calculators containing the necessary apps are connected.

Choose a Class to begin in the **Current Class** selector and click **Begin Class**.



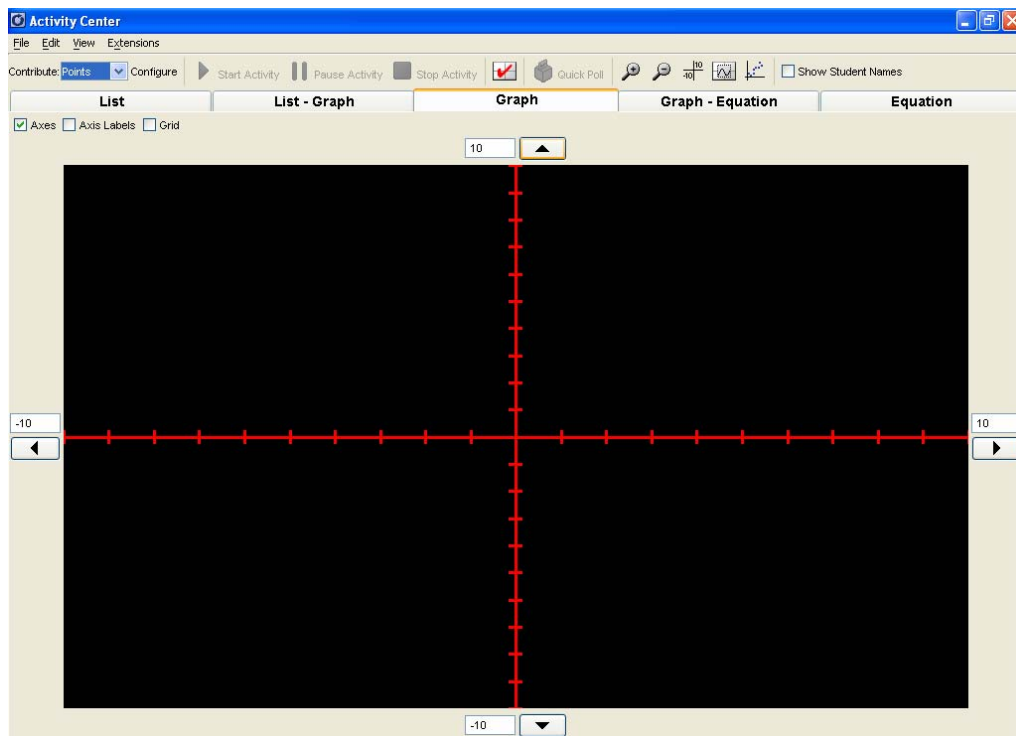
### 3. Open the Tools Tab and launch the Activity Center

A. Click the **Tools** tab near the upper middle of the home screen.



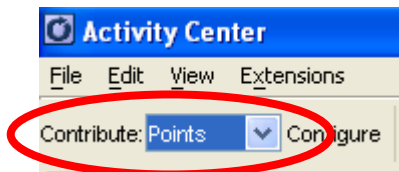
**B. Click the Activity Center icon**

The Activity Center Opens.



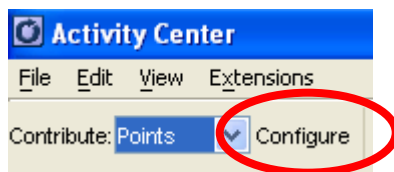
**4. Select Type of Input for Student**

Select **Points** from the Drop-down list.



**5. Define Configuration settings for Contribute Point Activity**

A: Click on the **Configure** button.



B: Select Configuration for Point Activity

The screenshot shows the 'Configure Calculators for Activity' dialog box. It is divided into four sections: 'Main Settings', 'Step size', 'Starting Point', and 'Students submit points'. On the left side, there are three text boxes with arrows pointing to specific settings in the dialog.

**With the Main Settings** you can select how many points for your student to drop and the lists that the X and Y coordinates will be stored in

**With the Step Size** one can select the step size the student's cursor will move.

**Starting Point** options specify where the students' cursors will begin the activity

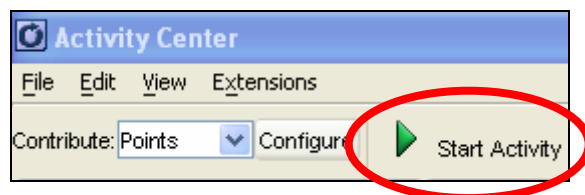
Selecting that a student will submit points all at once, their cursors will not appear on the screen until they submit all of their points.

The dialog box contains the following settings:

- Main Settings:**
  - Number of points per student: 5
  - X List: X
  - Y List: Y
  - Display coordinates
  - Let students resubmit points
  - Send current graph contents as background
- Step size:**
  - Same step size for X and Y (1.0)
  - (1.0, 1.0) (X, Y)
- Starting Point:**
  - Center of screen
  - (0.0, 0.0) (X, Y)
- Students submit points:**
  - All at once
  - One at a time

Buttons: OK, Cancel

C. Click **Start Activity** to allow students to enter the **Activity Center** and begin contributing their data.



## 6. Have students login, enter the Activity Center and contribute data.

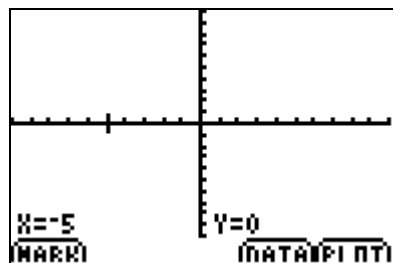
- A. Students login and chose **ACTIVITY CENTER** from the **TI-NAVIGATOR HOME** screen.



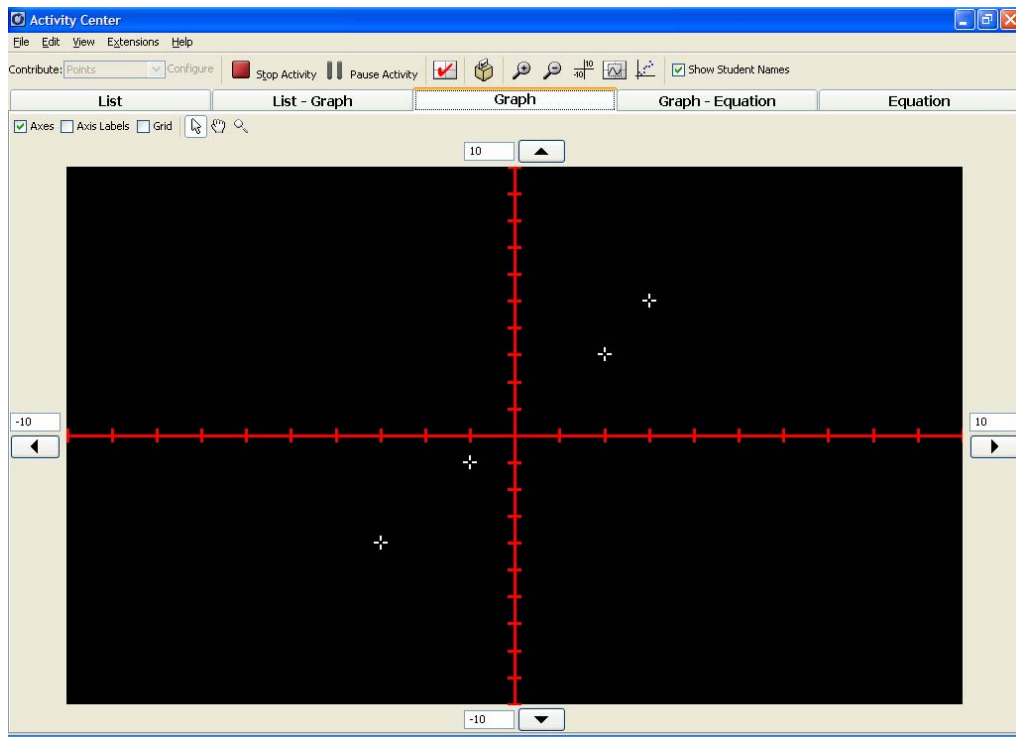
Note: If you have not started the Activity, students will see the following screen.



The **Activity Center** will open. The student will be able to move their cursor point around the screen.

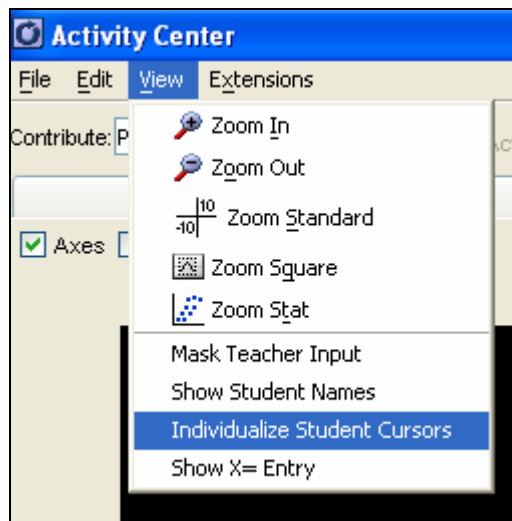


- D. Students data will appear on the teacher computer.



## 7. Select unique cursors for each student

Click **View** → **Individualize Student Cursors**



## B. Student cursors will change to unique colors and shapes

