

# Contributing Number Lines in Activity Center

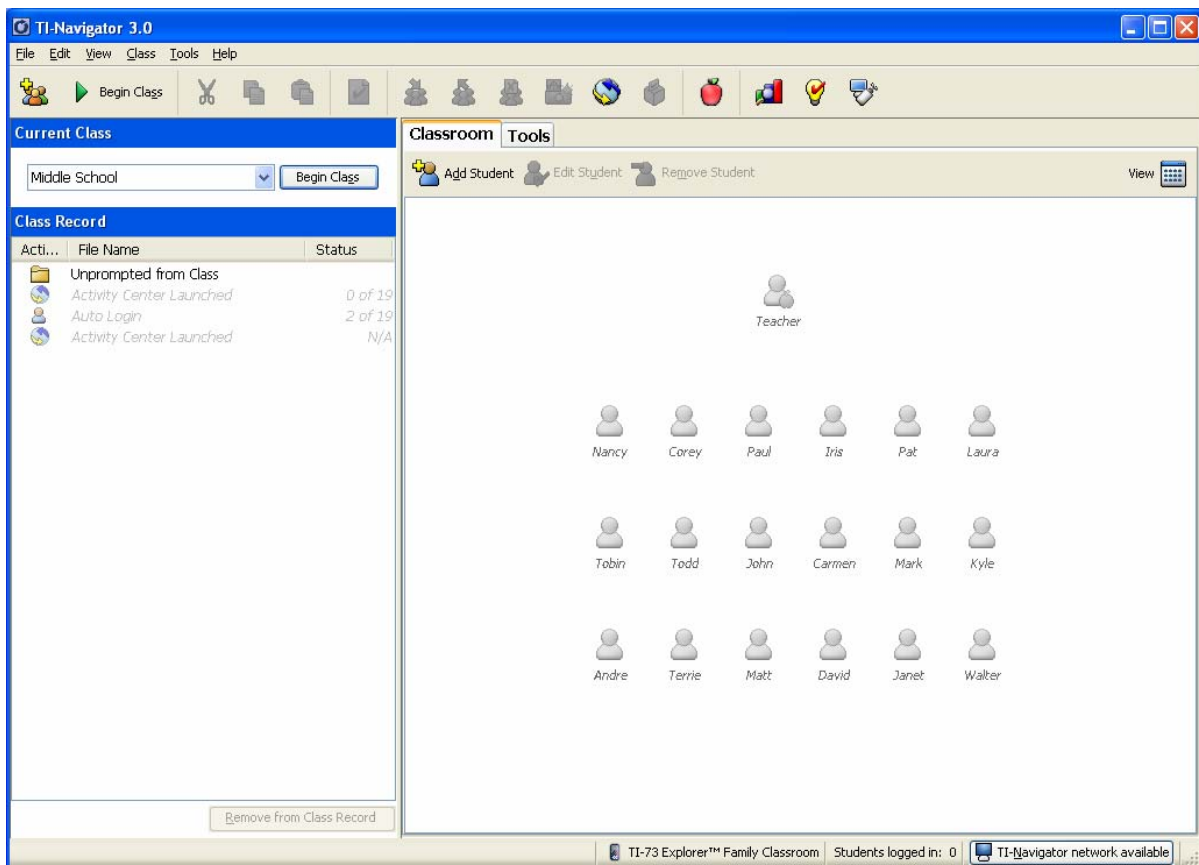
## Overview

This tour details the use of the Number Lines in the Activity Center. This functionality is useful when you want to conduct lessons involving integer, decimal and fraction number sense or working with expressions for integers, decimals and fractions involving addition and subtraction. This Activity only works with a TI-73 Explorer Family Classroom.

## 1. Launch the TI-Navigator™ Software

Click **Start > Programs > TI Tools > TI-Navigator > TI-Navigator**.

The TI-Navigator computer home screen opens.



## 2. Start a Class

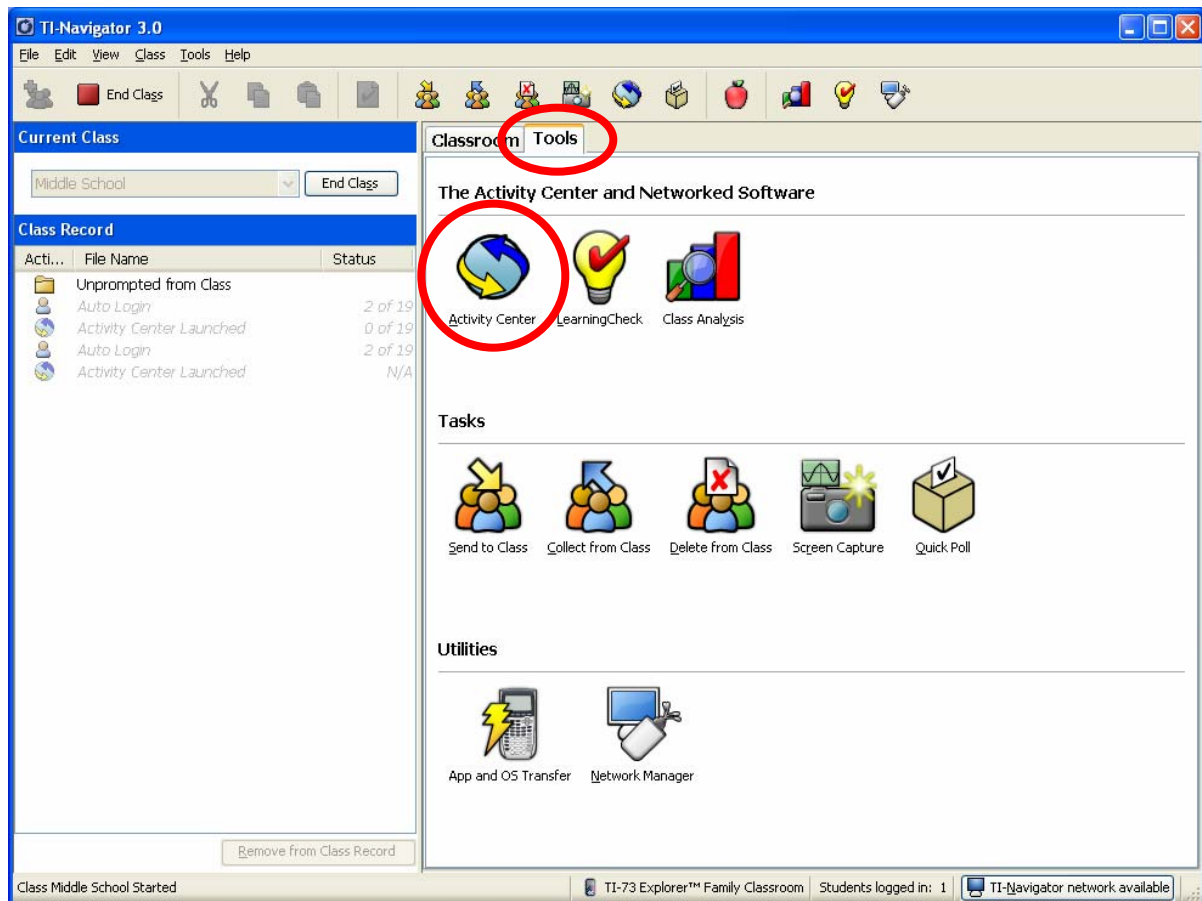
Assure that your TI-Navigator™ network hardware is connected and powered and calculators containing the necessary apps are connected. Choose a Class to begin in the **Current Class** selector and click **Begin Class**.



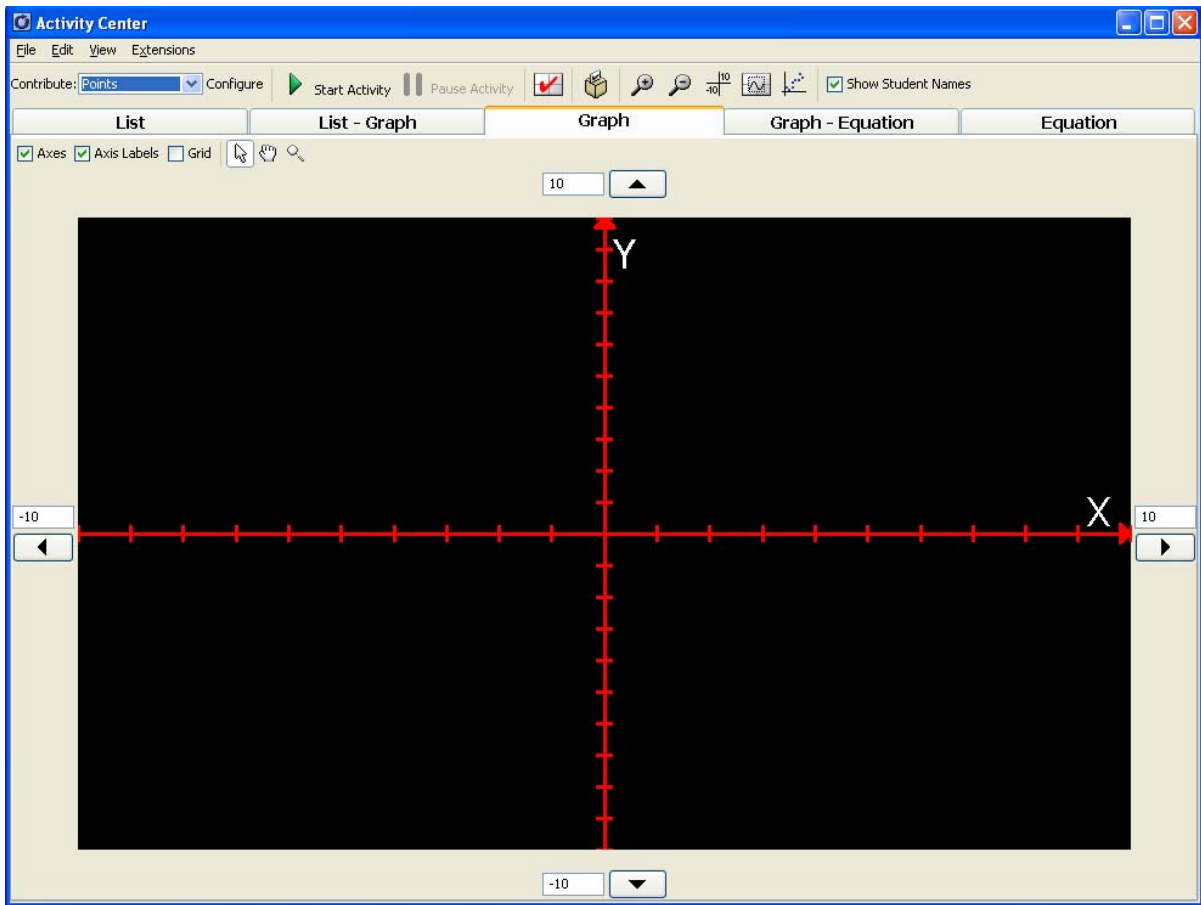
## 3. Open the Tools Tab and launch the Activity Center

A. Click the **Tools** tab near the upper middle of the home screen.

B. Click the **Activity Center** icon.

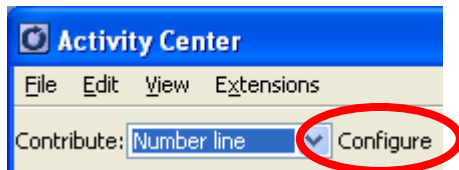


The **Activity Center** opens.



#### 4. Configure the activity

Select Contribute **Number line** in Activity Center and click on **Configure**.



Fill out the configuration dialog box.

Specify a value or expression to be displayed on the device.

**Number of marks** allows you to restrict the number of vectors or points the students can submit.

Depending on your activity, you may have students submit number line vectors or submit points on the number line.

**Configuration for Number line**

Main Settings

2 - 3 + 4 Prompt **UNIT** **b/c** **(-)**

4 Number of marks (maximum)

Resubmit

Let students view cursor location value

Students' mark

Draw vectors

Mark points only

OK Cancel

Set up the number line as you would like the student to start with on the calculator by defining the minimum value and maximum value shown, the step size they will move by and the tic marks that will be displayed.

Activity Center

File Edit View Extensions Help

Contribute: Number line Configure Start Activity Pause Activity Show Student Names

Student Vectors... Answer

When the Step Size is in fraction form, the cursor value of the guide value will be in fraction form.

-5 5 -4 -3 -2 -1 0 1 2 3 4 5

UNIT b/c Step  $\frac{1}{2}$  Tics  $\frac{1}{2}$  Show guide Show Hide

## 5. Start the Activity

Click on Start Activity and make sure students enter the Activity Center.



## 6. Have students login, enter the Activity Center and contribute data.

- A. Students login and chose **ACTIVITY CENTER** from the **TI-NAVIGATOR HOME** screen.



Note: If you have not started the Activity, students will see the following screen.

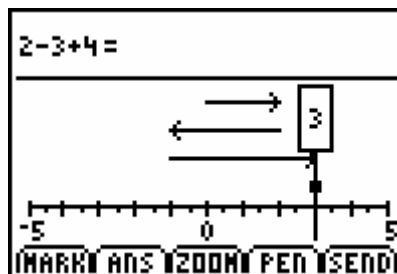


The **Activity Center** will open.

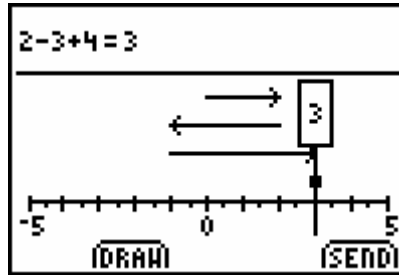
- B. The student will be able to either mark points or vectors, or input a numerical answer, or both. When the user presses the SEND soft key, the inputs are sent.

C.

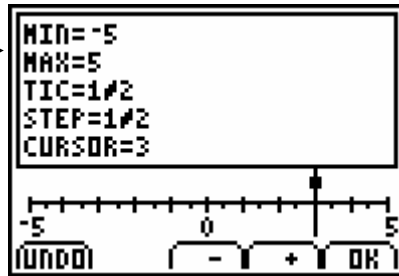
The student uses the MARK soft key and left and right arrow keys to draw the vectors.



The ANS soft key will allow the user to input a value or expression.



The ZOOM soft key will allow the student to change window and number line settings.



D. Student data will appear on the teacher computer.

If you hold the Control key while dragging the guide, the guide will snap to the endpoints of the selected vectors.

