

Collecting Lists from Students Using TI InterActive!™

Overview

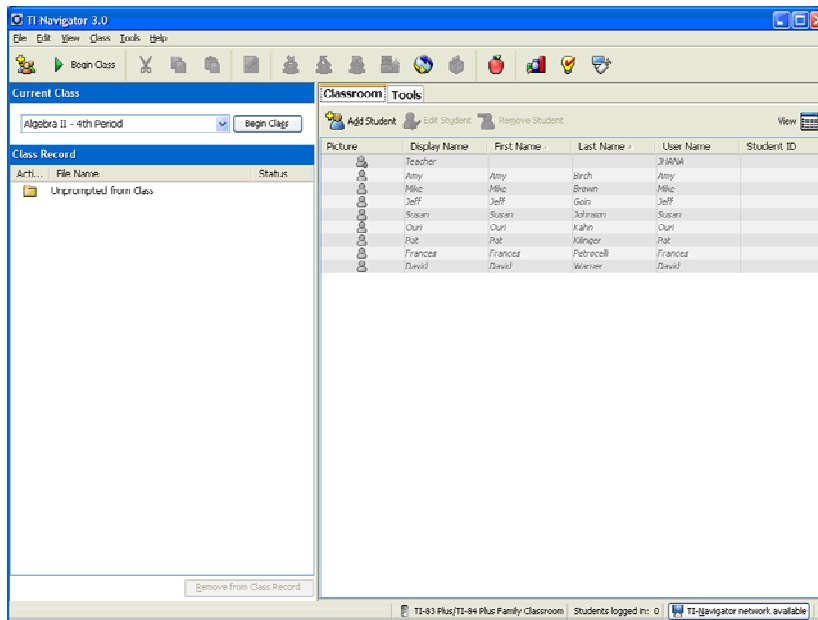
This tour covers

- Selecting Lists to Collect
- Collecting and Keeping Student List Separate
- Collecting Aggregating Student Lists

1. Launch the TI-Navigator™ Software

Click **Start > Programs > TI Tools > TI-Navigator > TI-Navigator**.

The TI-Navigator computer home screen opens.



2. Start a Class

Assure that your TI-Navigator network hardware is connected and powered and calculators containing the necessary apps are connected.

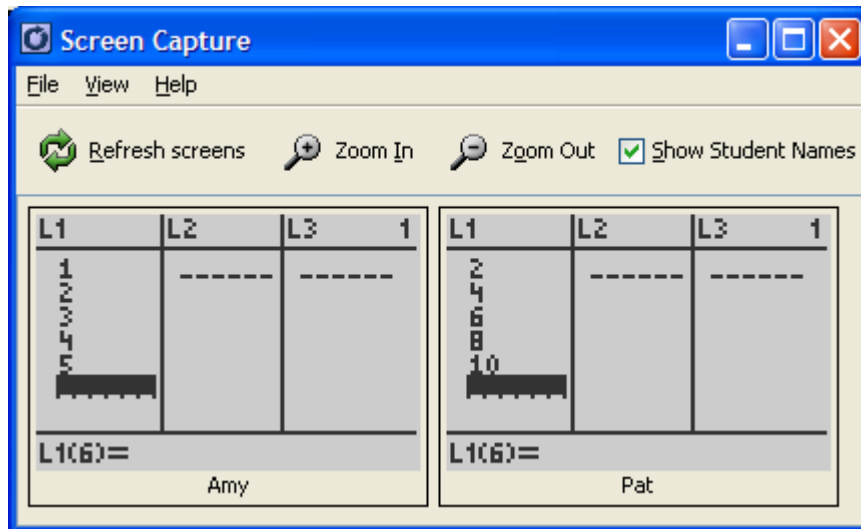
Choose a Class to begin in the **Current Class** selector and click **Begin Class**.



2. Student Enter Variables on their Device

Using the List functionality of the calculator, have the students create a List in L1.

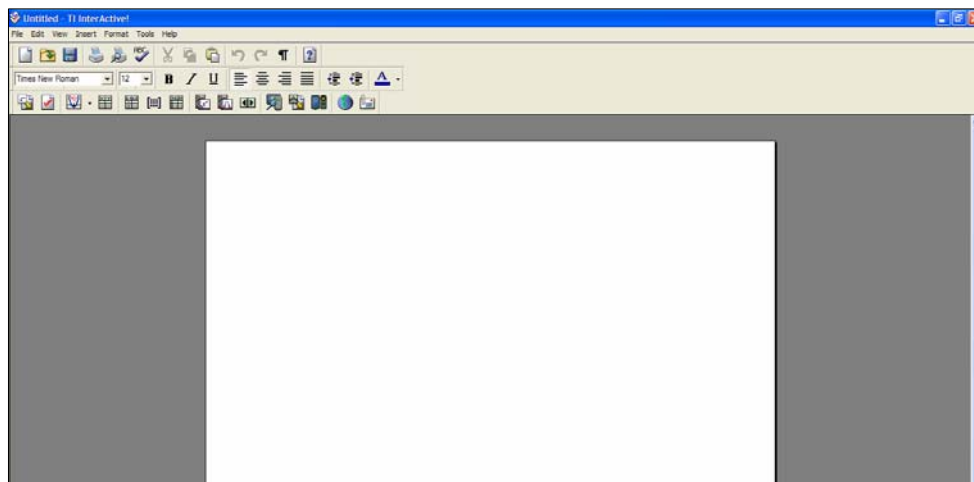
Student inputs are shown using the screen capture functionality of TI-Navigator.



3. Launch the TI InterActive!™ software

Click **Start > Programs > TI InterActive! > TI InterActive!**

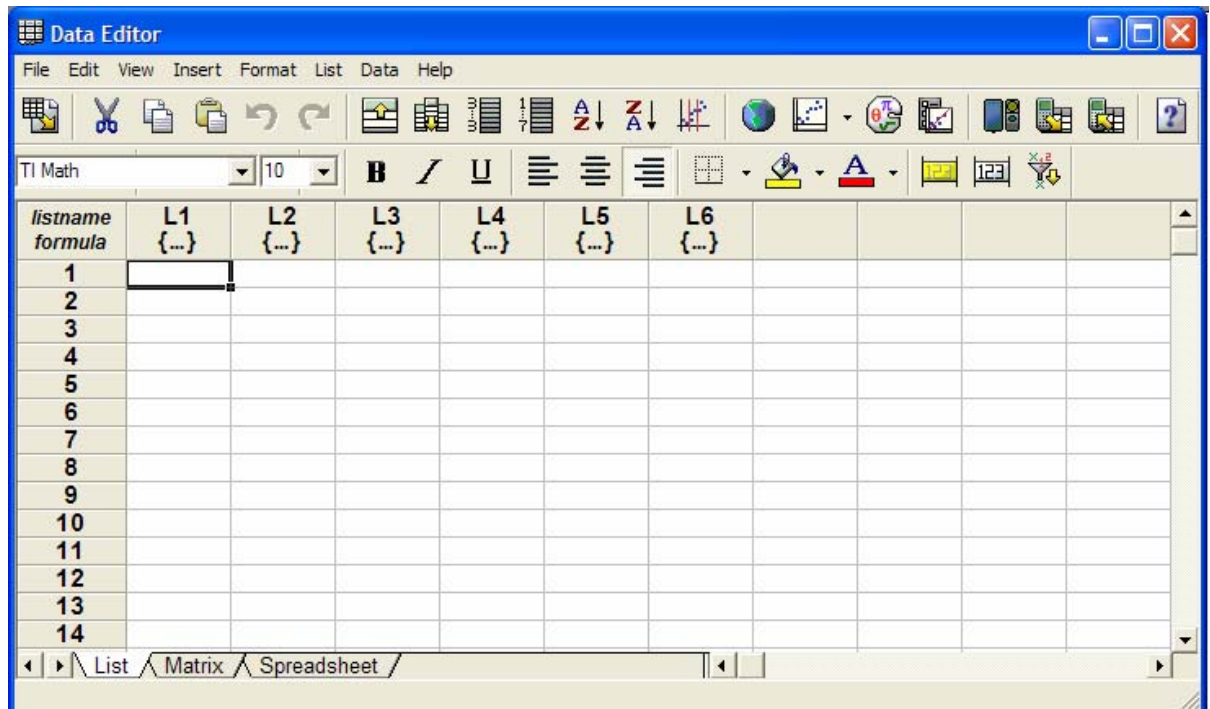
The TI InterActive! Software opens.



4. Open the List Window

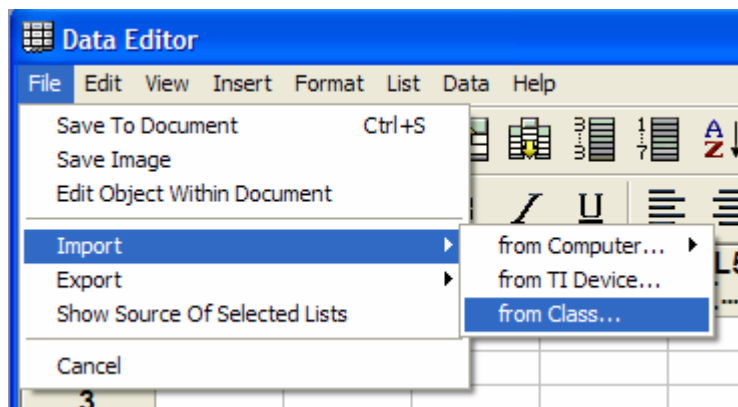
Select the List Icon 

The Data Editor window will open



5. Select Variables to Collect

From the Data Editor Window select **File > Import > from Class...**



Select the **Individual Lists** tab. Choose the List to collect and select **Import**.

The **Device ID** display option and the **Device Login Required** Check box, does not affect the import of the file. This box only applies to TI-Navigator 1.0 software.

Import From Class

Individual Lists | Augmented List(s) | Numeric Variables

This action will collect the selected list from all devices, display them individually, and name each student's list according to the setting.

List to Collect From Class

L1 L2 L3 L4 L5 L6

Other:

List Display Name

Anonymous (example: L1,L1C1,L1C2...)

Device ID (example: L1_0416035FOED998...)

Login ID (example: L1_JOHNNYQ, must check "Device Login Required")

Device

Folder: * TI-89/Voyage 200 family only

Delete from Device after Import

Device Login Required

Import Cancel Help

4. Stop Collection of Variables

The TI-Navigator™ **External Request** dialog box will open.

Click **OK**.

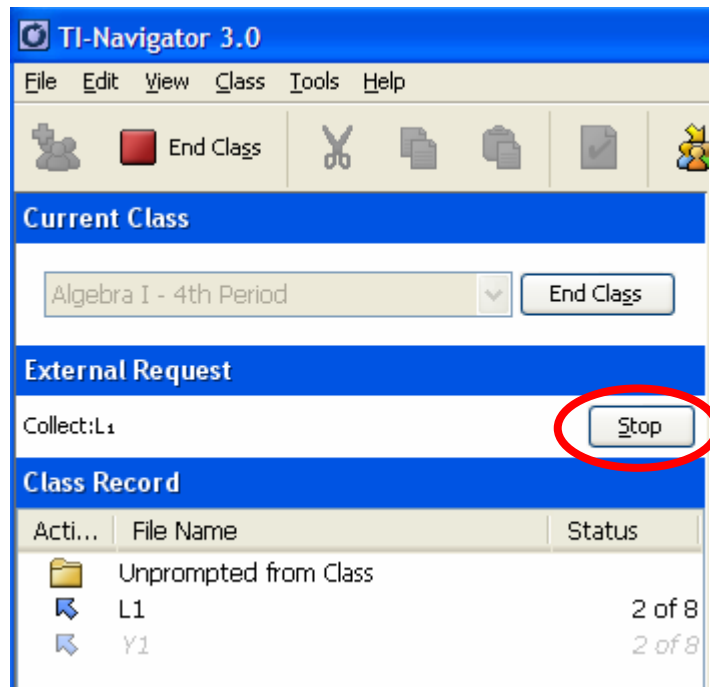
External Request

An external application has added a request to the Class Record. Once the transfers are completed you will need to click the Stop button to return status to the external application.

In the future, do not show this message

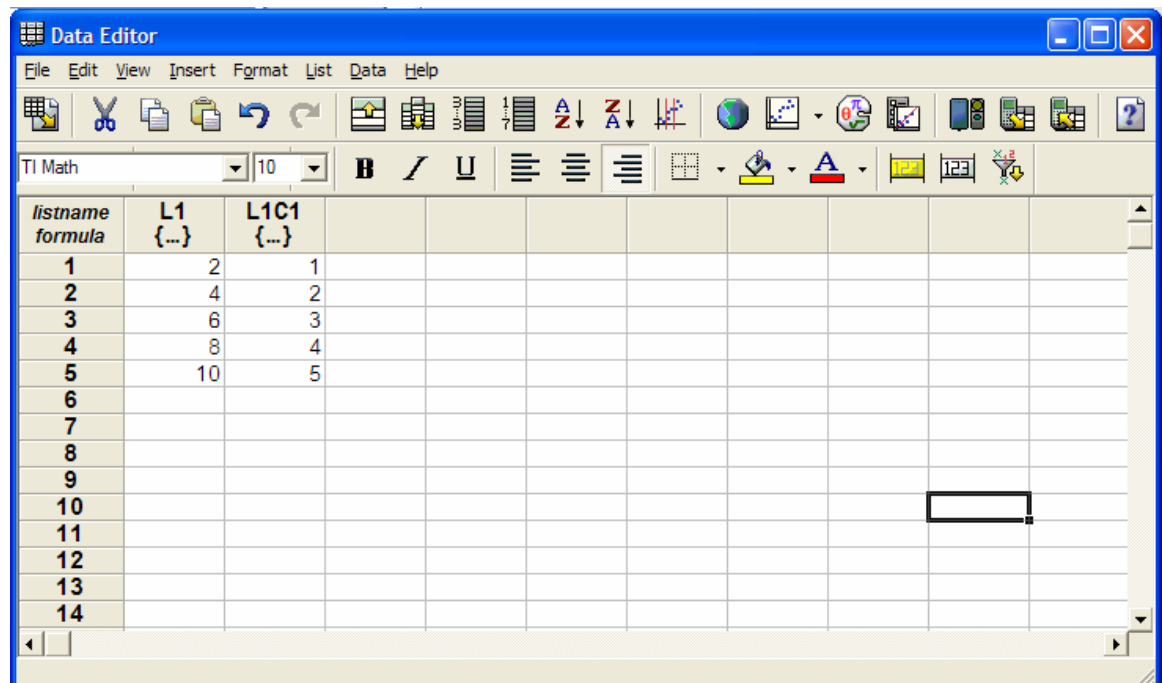
OK

The **External Request** indicator will be displayed in the TI-Navigator home screen and the Collect Action will be displayed in the **Class Record**.



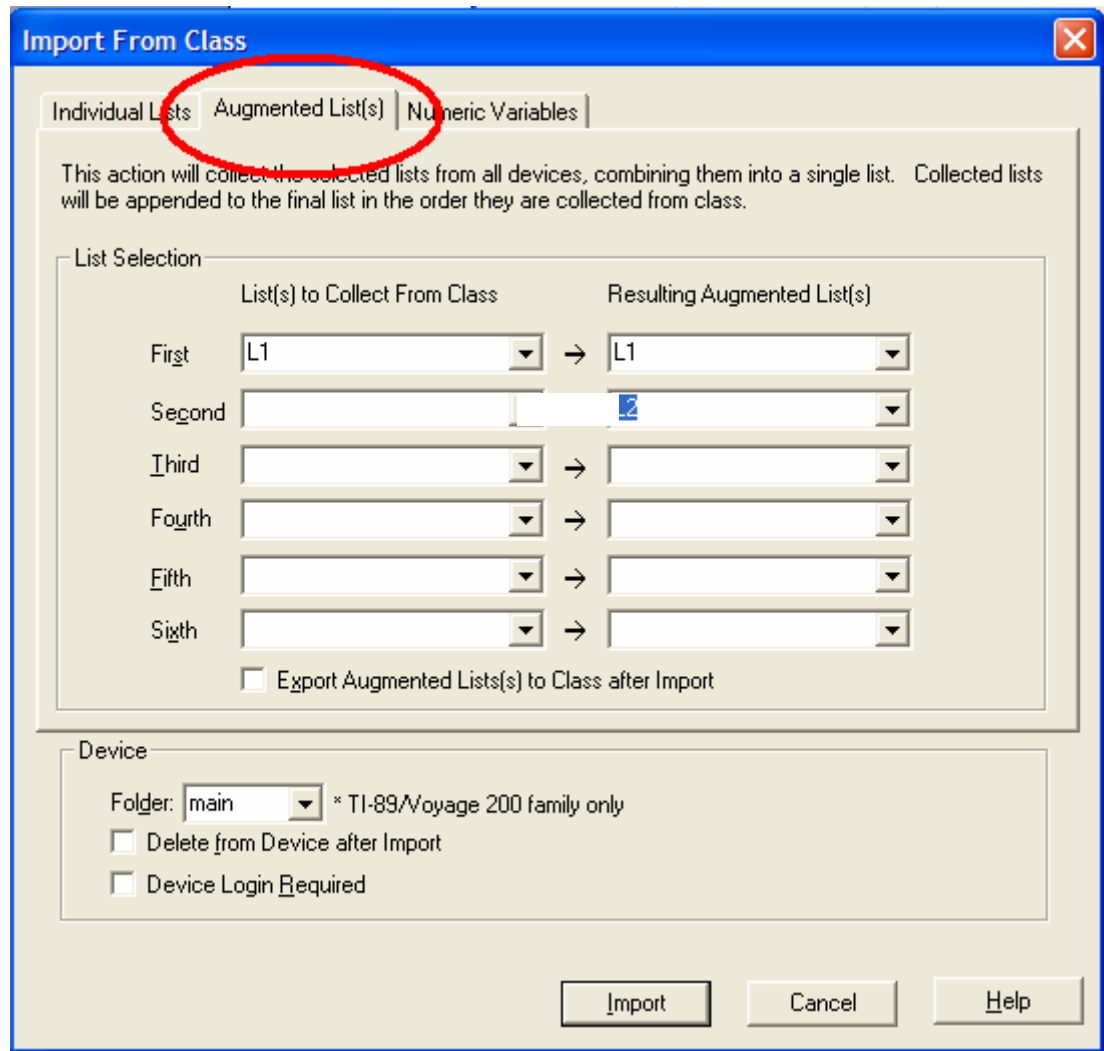
When the file has been collected from all of the students who are logged in, click the **Stop** button in **External Request**.

The collected variables will open in TI InterActive!™.



5. Aggegating Student Lists

From the Data Editor Window select **File > Import > from Class...**



When the file has been collected from all of the students who are logged in, click the **Stop** button in **External Request**.

The collected variables will open in TI InterActive!™.

